



TRG Tract Report: KEWANEE 3

Scott Hillard; American Forest Management

28 April, 2025

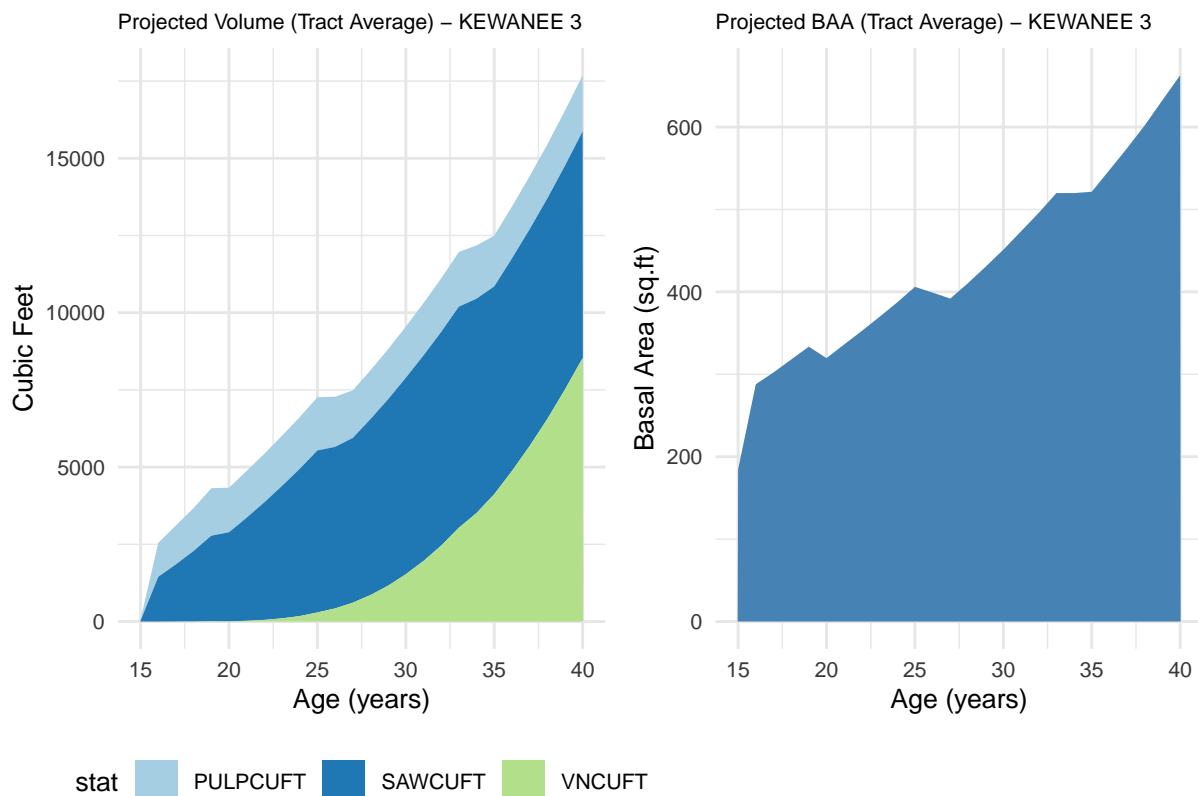
- All volume information (VNCUFT,PULPCUFT,SAWCUFT) represent projections based on inventory. These are for informational purposes. Actual volumes may vary from projections, likewise AFM cannot guarantee projections. Projections include silvicultural treatments, such as thinning. There are four stands Tank-9, Goode-4, Hansen-3, and Preuss-6 which were experimental plantings of white oak, or oak and walnut mixed. These were excluded from the analysis within those tracts. Overall they represent a total of approximately 42 acres.

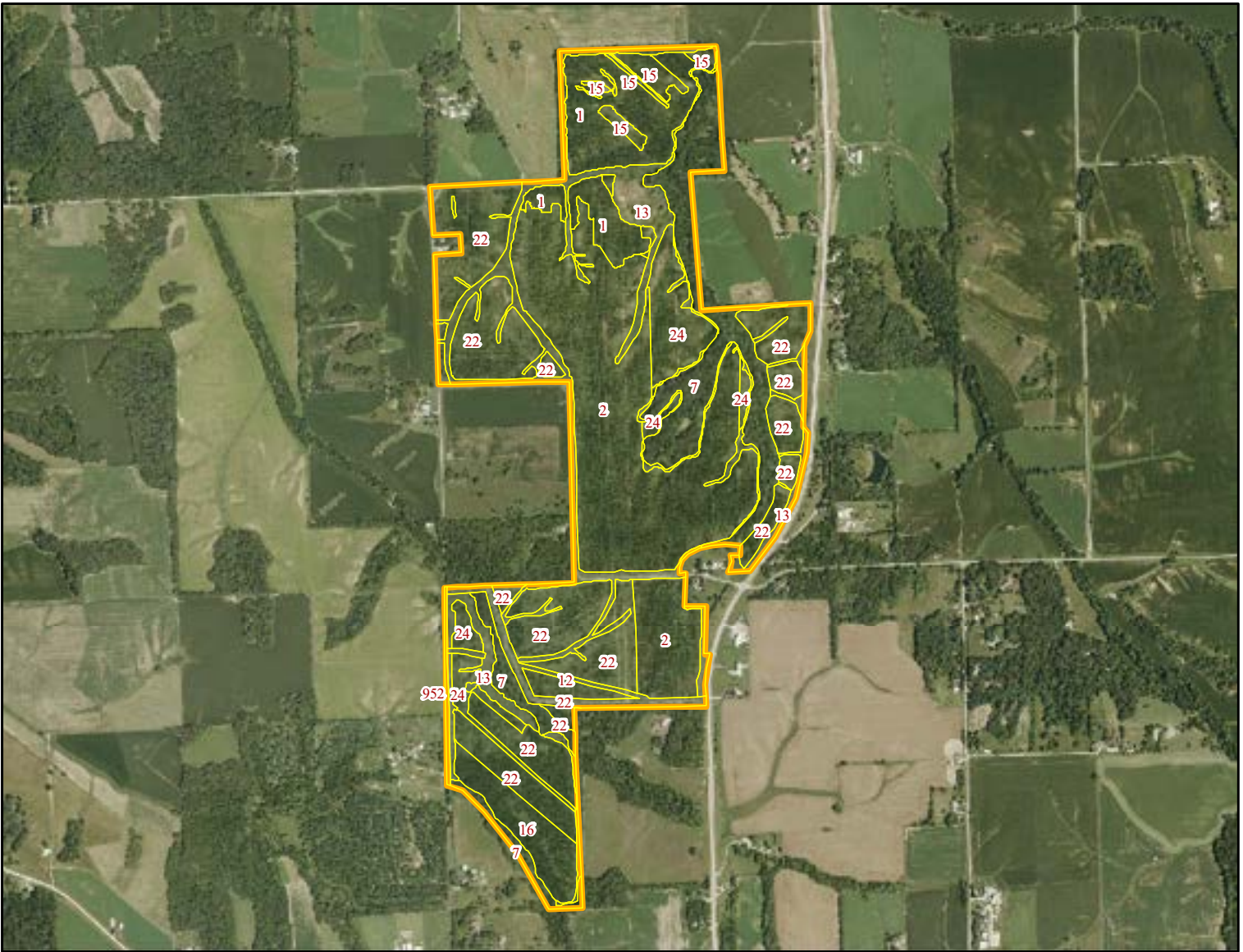
Table 1: Est. Current Stand Inventory for (Productive Area-Walnut Stands Only); KEWANEE 3

| Stand | GIS.Area | Current_Age | DBH | BAPA | TPA | TH | SAWCUFT | PULPCUFT |
|-------|----------|-------------|-----|------|-----|------|---------|----------|
| 1 | 36.59 | 14 | 4.9 | 40.4 | 289 | 37.2 | 8.9 | 14.7 |
| 2 | 119.02 | 14 | 4.2 | 32.0 | 312 | 30.8 | 11.2 | 10.6 |
| 16 | 14.49 | 14 | 3.9 | 19.4 | 193 | 28.0 | 0.0 | 0.0 |
| 15 | 7.23 | 14 | 4.1 | 26.2 | 258 | 29.4 | 5.0 | 5.6 |
| 22 | 103.68 | 14 | 3.8 | 18.7 | 212 | 26.0 | 0.0 | 0.0 |
| 24 | 24.49 | 14 | 4.1 | 26.2 | 258 | 29.4 | 5.0 | 5.6 |

Table 2: Weighted Tract Average (Productive Area-Walnut Stands Only)

| GIS_Area_Productive | GIS_Area_Total | Avg_DBH | Avg_BA | Avg_TPA | Avg_HT | Avg_SAWCUFT | Avg_PULPCUFT |
|---------------------|----------------|---------|--------|---------|--------|-------------|--------------|
| 305.5 | 415.6 | 4.1 | 27.3 | 264.3 | 29.7 | 5.9 | 6.5 |





| Tract Name | Stand | State | County | Acres | Origin | Dom Species | Year Est |
|------------|------------------|----------|--------|--------|---------|-------------|----------|
| KEWANEE 3 | TRGBW011-203-1 | Illinois | Henry | 36.59 | Planted | Walnut | 2010 |
| KEWANEE 3 | TRGBW011-203-2 | Illinois | Henry | 119.02 | Planted | Walnut | 2010 |
| KEWANEE 3 | TRGBW011-203-7 | Illinois | Henry | 50.08 | Natural | Hardwood | 0 |
| KEWANEE 3 | TRGBW011-203-12 | Illinois | Henry | 8.73 | Open | Undefined | 0 |
| KEWANEE 3 | TRGBW011-203-13 | Illinois | Henry | 50.03 | Open | Undefined | 0 |
| KEWANEE 3 | TRGBW011-203-952 | Illinois | Henry | 1.31 | Open | Undefined | 0 |
| KEWANEE 3 | TRGBW011-203-16 | Illinois | Henry | 14.49 | Planted | Walnut | 2010 |
| KEWANEE 3 | TRGBW011-203-15 | Illinois | Henry | 7.23 | Planted | Walnut | 2010 |
| KEWANEE 3 | TRGBW011-203-22 | Illinois | Henry | 103.68 | Planted | Walnut | 2010 |
| KEWANEE 3 | TRGBW011-203-24 | Illinois | Henry | 24.49 | Planted | Walnut | 2010 |
| | | | | 415.65 | | | |

KEWANEE 3



1 inch = 1,611 feet

1/27/2025 mgm

