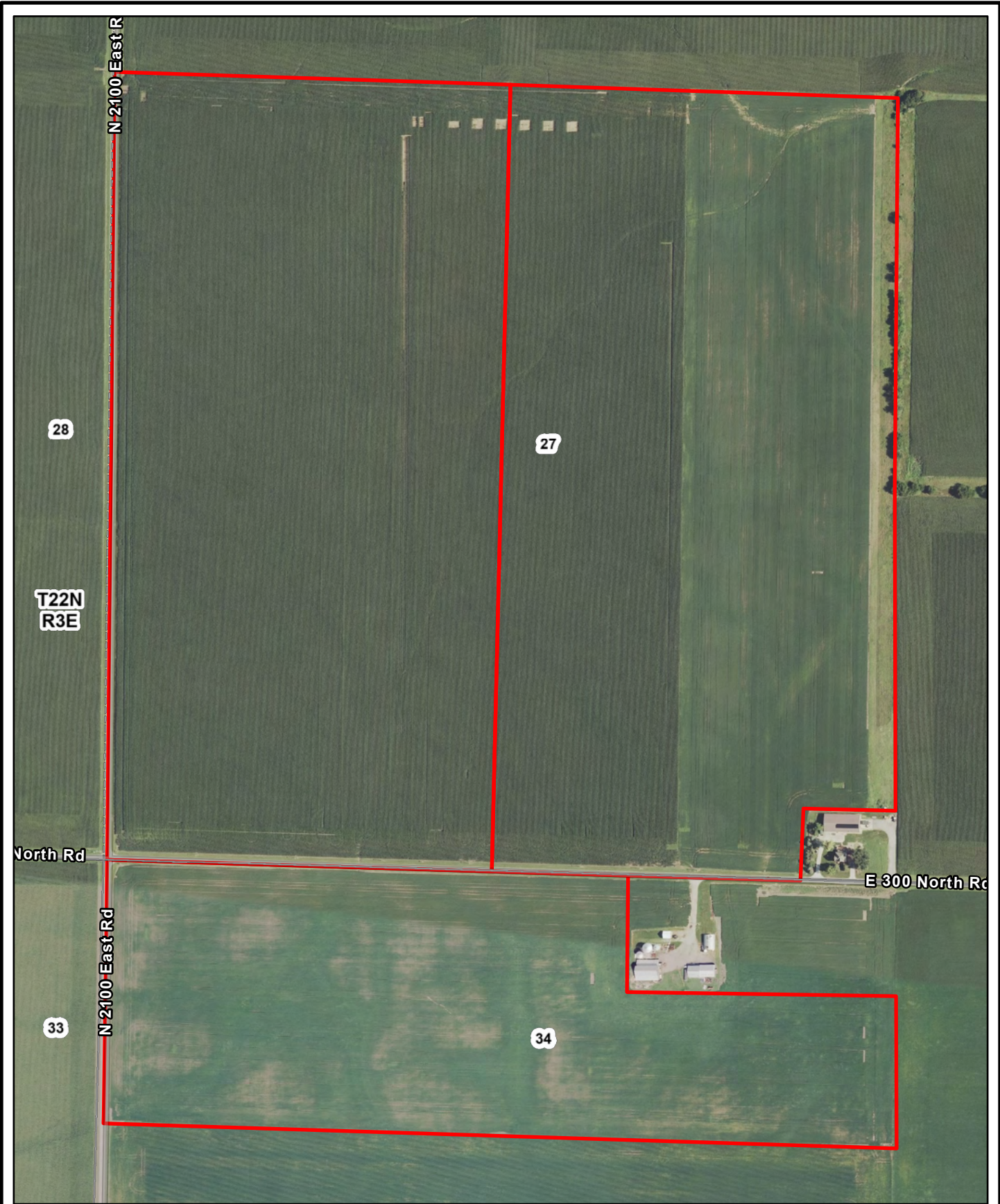


Keith Fluegel
207.5 Ac
McLean County, Illinois

Latitude: 40.3677°N
 Longitude: 88.8693°W
 Imagery Source: USDA NAIP
 Soil Data Source: USDA NRCS
 Boundaries are Approximate



Keith Fluegel
207.5 Ac
McLean County, Illinois

Latitude: 40.329°N
Longitude: 88.8572°W
Imagery Source: USDA NAIP
Soil Data Source: USDA NRCS
Boundaries are Approximate

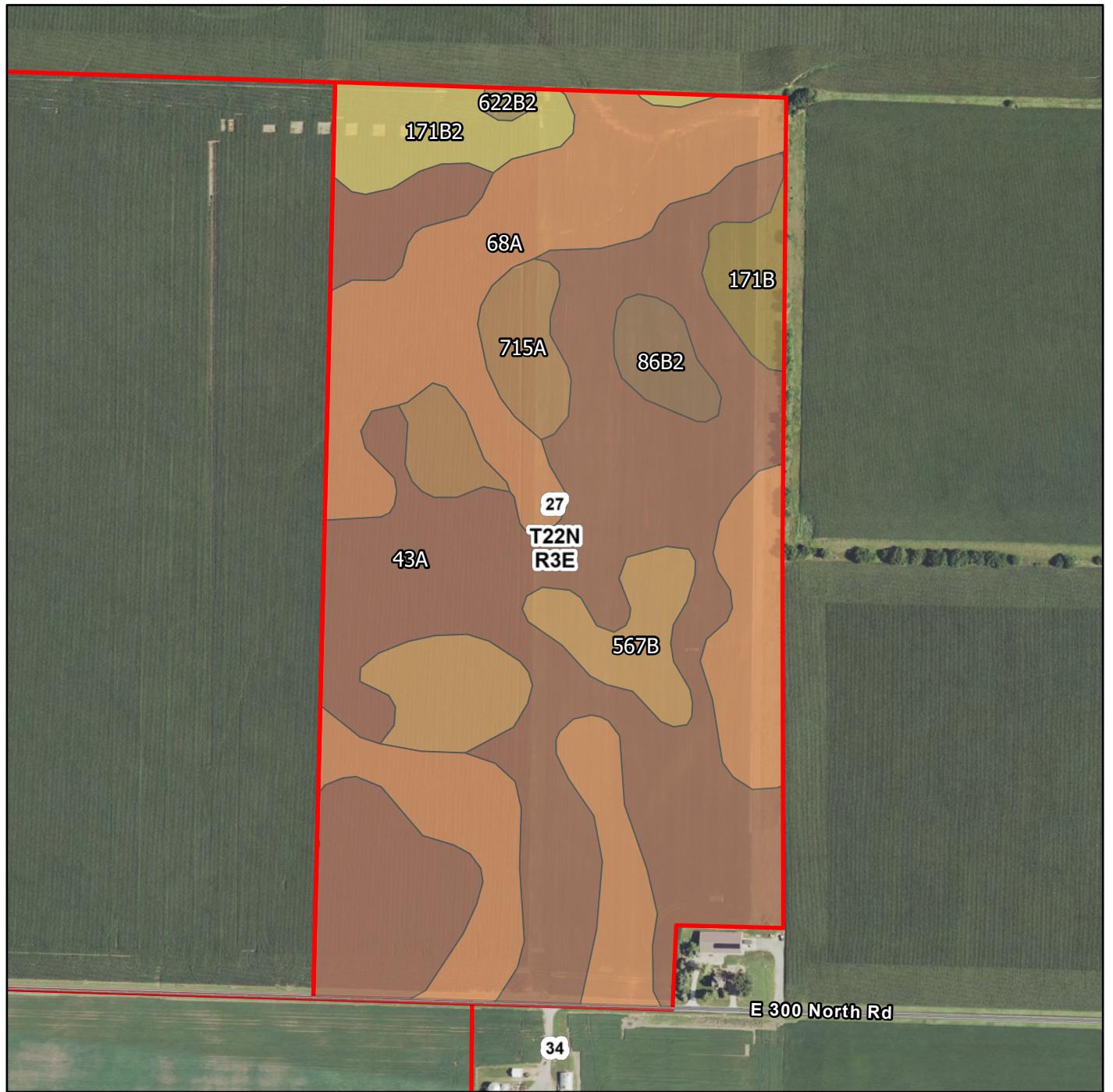


Map Symbol	Name	Non-IRR LCC	PRODUCTIVITY INDEX	CORN	BEANS	ACRES
43A	Ipava silt loam, 0 to 2 percent slopes	1	142	191	62	32.1
68A	Sable silty clay loam, 0 to 2 percent slopes	2w	143	192	63	21.3
171B2	Catlin silt loam, 2 to 5 percent slopes, eroded	2e	131	178	56	14.9
567B	Elkhart silt loam, 2 to 5 percent slopes	2e	124	169	53	3.8
67A	Harpster silty clay loam, 0 to 2 percent slopes	2w	133	182	57	3.8
171B	Catlin silt loam, 2 to 5 percent slopes	2e	137	185	58	2.5
86B	Osco silt loam, 2 to 5 percent slopes	2e	138	187	59	2.2
TOTAL			138.7	187.1	60.3	80.6



Keith Fluegel
207.5 Ac
McLean County, Illinois

Latitude: 40.3303°N
 Longitude: 88.8596°W
 Imagery Source: USDA NAIP
 Soil Data Source: USDA NRCS
 Boundaries are Approximate

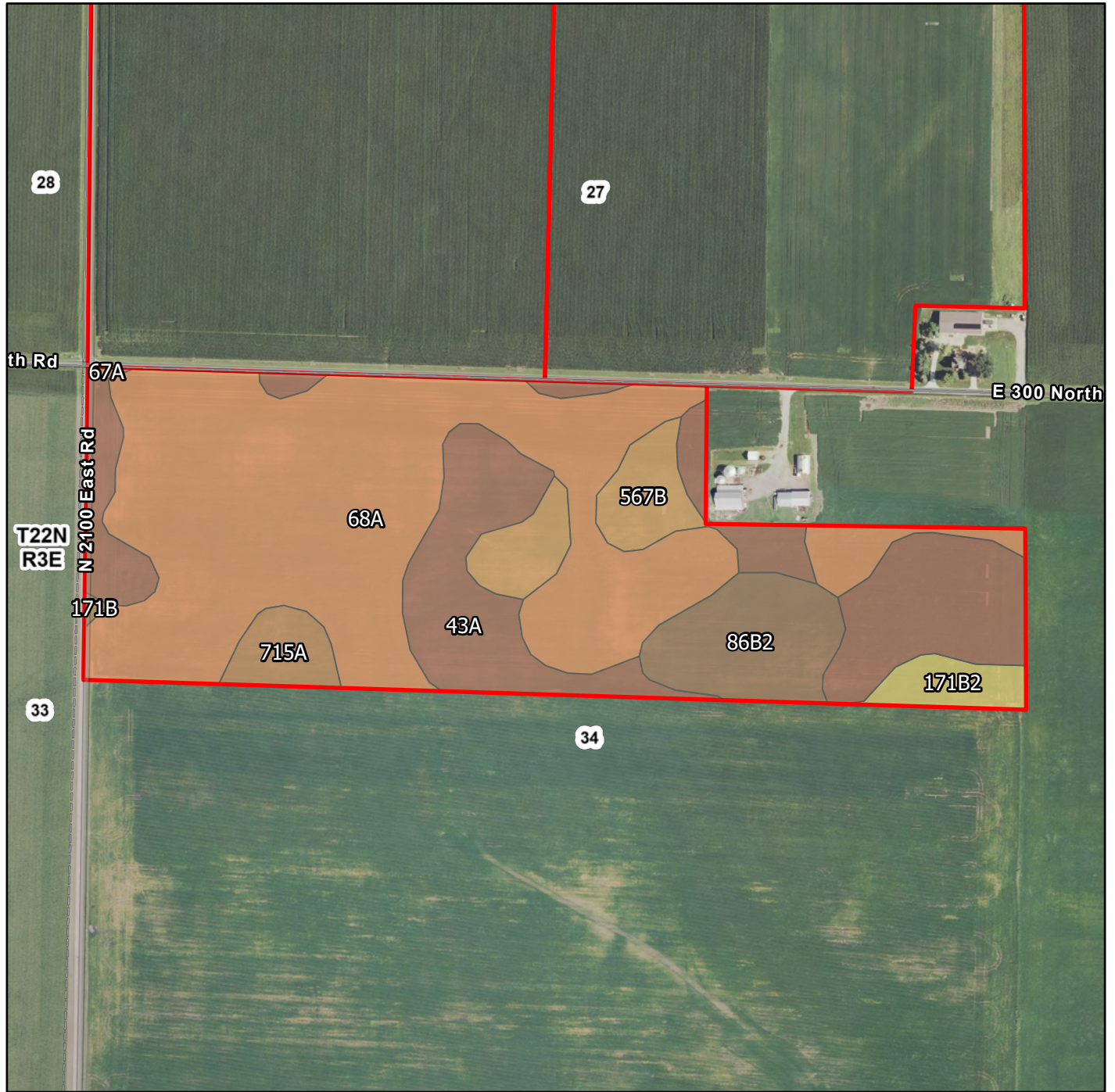


Map Symbol	Name	Non-IRR LCC	PRODUCTIVITY INDEX	CORN	BEANS	ACRES
43A	Ipava silt loam, 0 to 2 percent slopes	1	142	191	62	38
68A	Sable silty clay loam, 0 to 2 percent slopes	2w	143	192	63	24.7
567B	Elkhart silt loam, 2 to 5 percent slopes	2e	124	169	53	5.7
171B2	Catlin silt loam, 2 to 5 percent slopes, eroded	2e	131	178	56	3.7
715A	Arrowsmith silt loam, 0 to 2 percent slopes	1	140	190	61	3.6
171B	Catlin silt loam, 2 to 5 percent slopes	2e	137	185	58	1.9
86B2	Oscos silt loam, 2 to 5 percent slopes, eroded	2e	133	180	56	1.7
622B2	Wyanet silt loam, 2 to 5 percent slopes, eroded	2e	114	153	50	0.3
TOTAL			140	188.6	61.1	79.6



Keith Fluegel
207.5 Ac
McLean County, Illinois

Latitude: 40.3302°N
 Longitude: 88.8548°W
 Imagery Source: USDA NAIP
 Soil Data Source: USDA NRCS
 Boundaries are Approximate

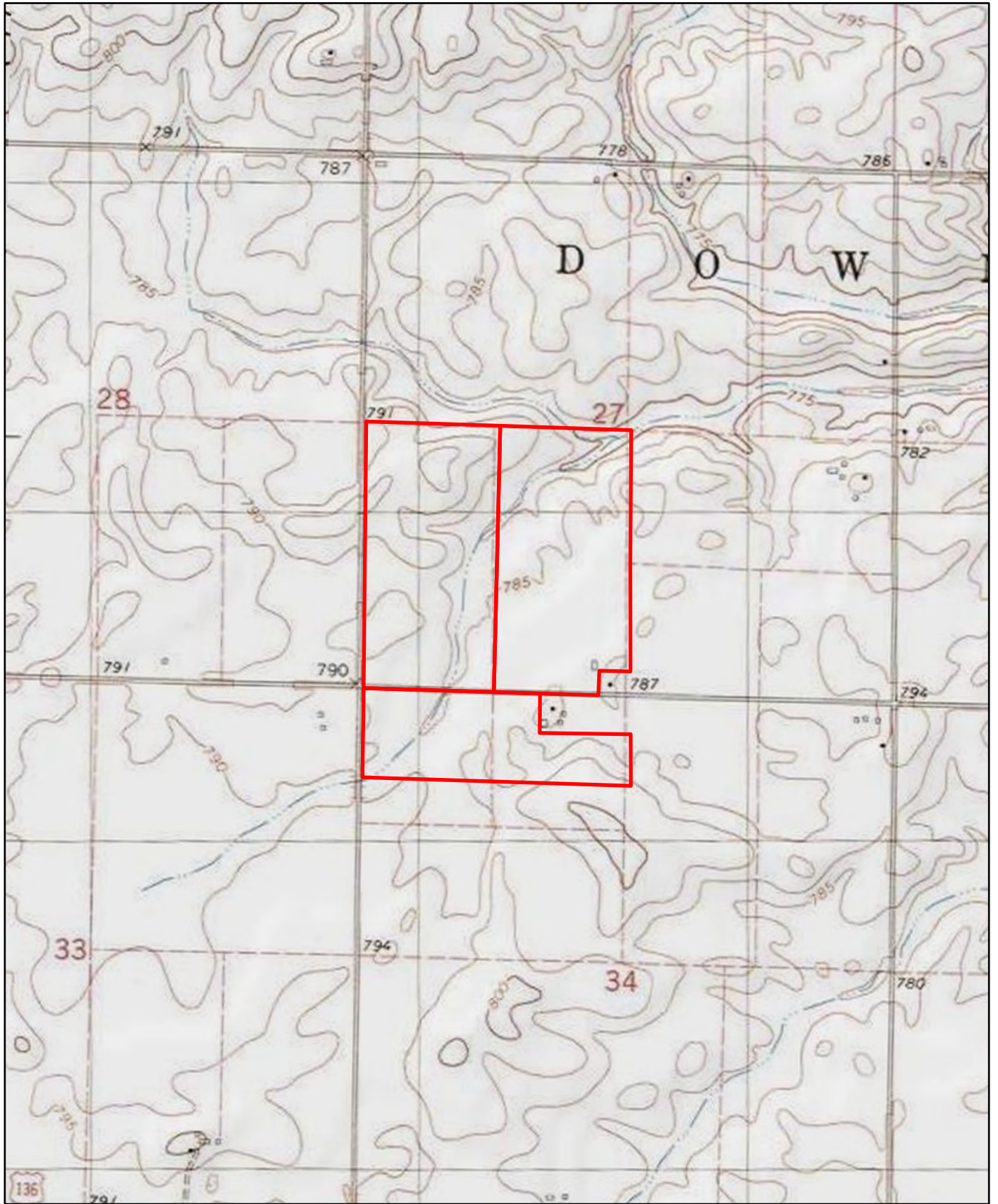


Map Symbol	Name	Non-IRR LCC	PRODUCTIVITY INDEX	CORN	BEANS	ACRES
68A	Sable silty clay loam, 0 to 2 percent slopes	2w	143	192	63	24.7
43A	Ipava silt loam, 0 to 2 percent slopes	1	142	191	62	12.7
86B2	Osco silt loam, 2 to 5 percent slopes, eroded	2e	133	180	56	3.7
567B	Elkhart silt loam, 2 to 5 percent slopes	2e	124	169	53	2.9
715A	Arrowsmith silt loam, 0 to 2 percent slopes	1	140	190	61	1.3
171B2	Catlin silt loam, 2 to 5 percent slopes, eroded	2e	131	178	56	1.3
171B	Catlin silt loam, 2 to 5 percent slopes	2e	137	185	58	0.1
67A	Harpster silty clay loam, 0 to 2 percent slopes	2w	133	182	57	0.1
TOTAL			140.3	188.9	61.3	46.8



Keith Fluegel
207.5 Ac
McLean County, Illinois

Latitude: 40.3253°N
Longitude: 88.8571°W
Imagery Source: USDA NAIP
Soil Data Source: USDA NRCS
Boundaries are Approximate



Keith Fluegel
207.5 Ac
McLean County, Illinois

Latitude: 40.329°N
Longitude: 88.8572°W
Imagery Source: USDA NAIP
Soil Data Source: USDA NRCS
Boundaries are Approximate