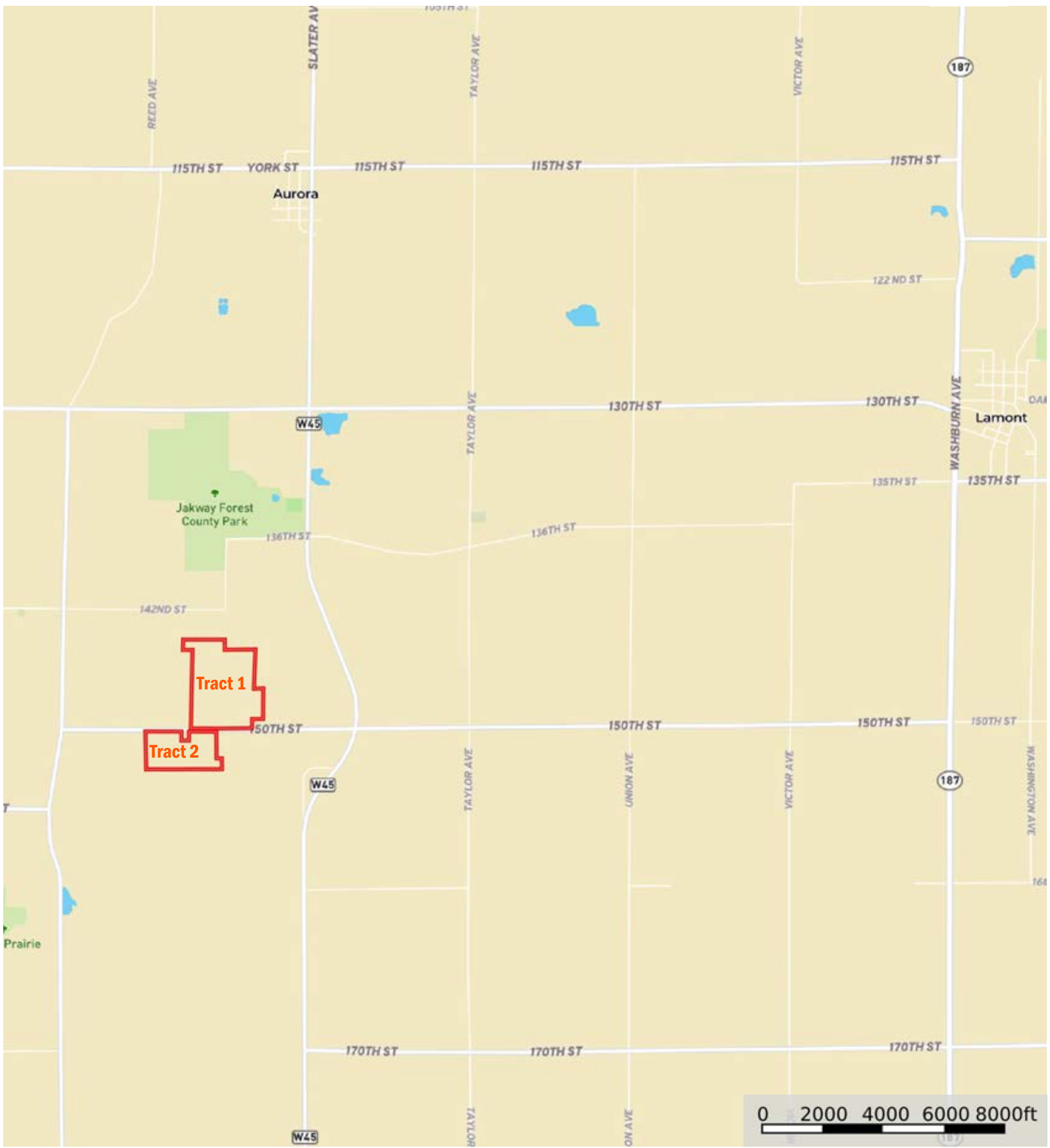


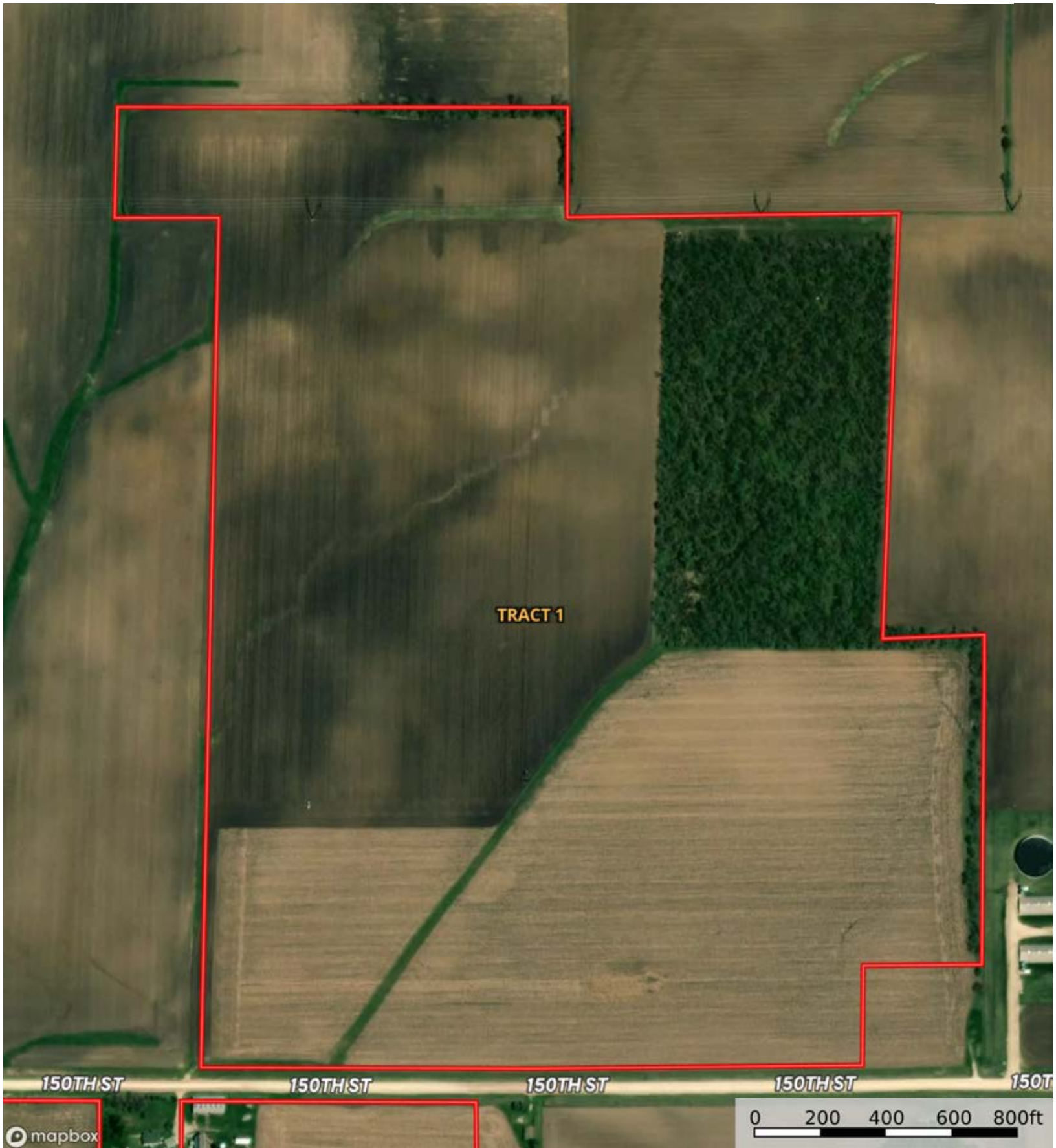
Krebsbach Family Farm


Buchanan County, Iowa, 220 AC +/-



 Boundary

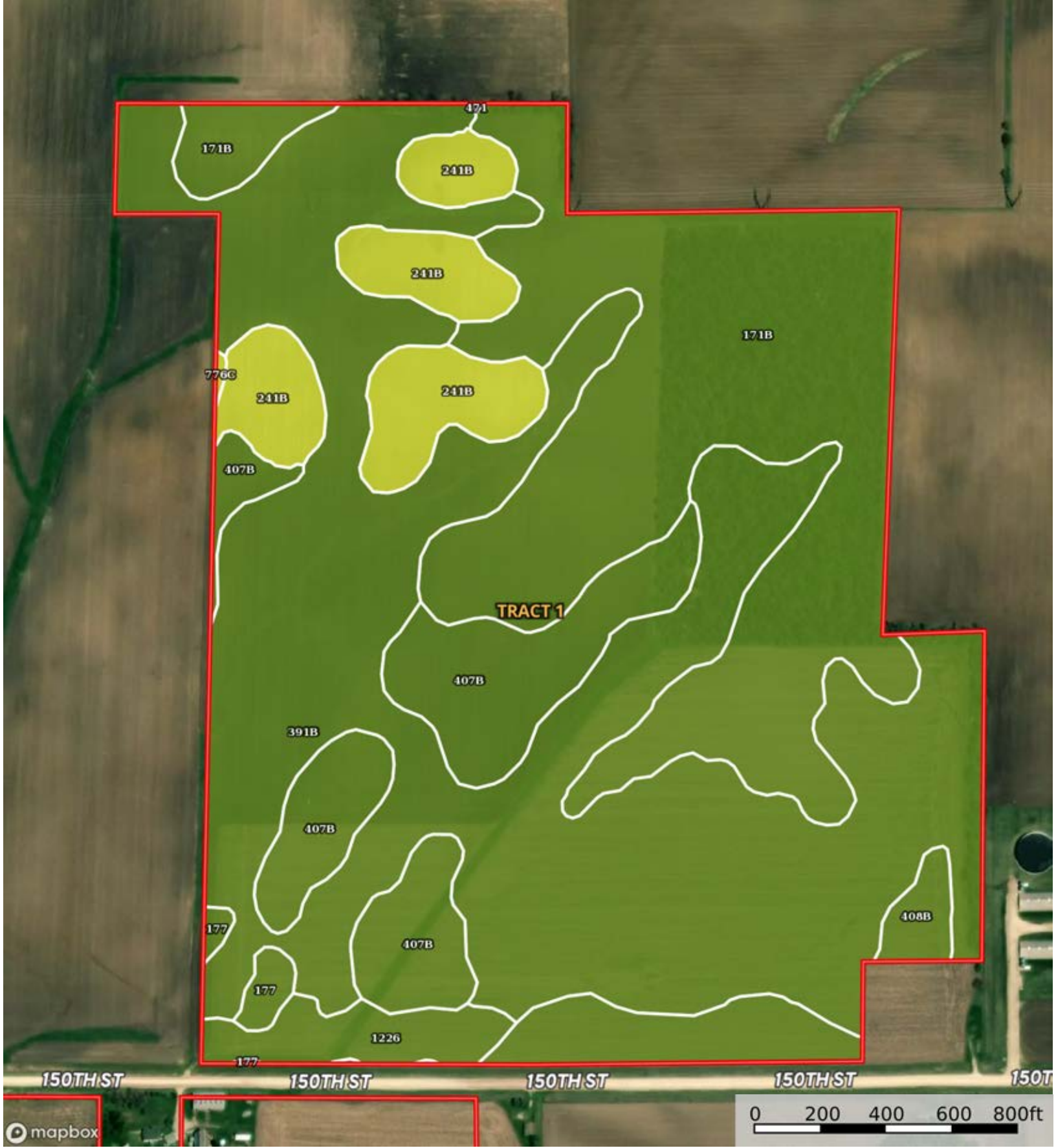
Krebsbach Family Farm
Buchanan County, Iowa, 220 AC +/-



 Boundary

Krebsbach Family Farm

Buchanan County, Iowa, 220 AC +/-



 Boundary

Boundary 140.5 ac

SOIL CODE	SOIL DESCRIPTION	ACRES	%	CSR2	CPI	NCCPI	CAP
391B	Clyde-Floyd complex, 1 to 4 percent slopes	66.66	47.44	87.0	0	88	2w
171B	Bassett loam, 2 to 5 percent slopes	39.35	28.0	85.0	0	89	2e
407B	Schley loam, 1 to 4 percent slopes	14.36	10.22	81.0	0	91	2w
241B	Burkhardt-Saude complex, 2 to 5 percent slopes	10.21	7.27	33.0	0	58	4e
177	Saude loam, 0 to 2 percent slopes	5.23	3.72	60.0	0	77	2s
1226	Lawler loam, 0 to 2 percent slopes, rarely flooded	3.32	2.36	59.0	0	88	2s
408B	Olin fine sandy loam, 2 to 5 percent slopes	1.27	0.9	74.0	0	77	2e
776C	Lilah sandy loam, 2 to 9 percent slopes	0.09	0.06	5.0	0	43	4s
471	Oran loam, 1 to 3 percent slopes	0.01	0.01	74.0	0	83	1
TOTALS		140.5 2(*)	100%	80.05	-	85.86	2.15

(*) Total acres may differ in the second decimal compared to the sum of each acreage soil. This is due to a round error because we only show the acres of each soil with two decimal.



SOIL CODE	SOIL DESCRIPTION	ACRES	%	CSR2	CPI	NCCPI	CAP
391B	Clyde-Floyd complex, 1 to 4 percent slopes	60.13	51.92	87.0	0	88	2w
171B	Bassett loam, 2 to 5 percent slopes	22.19	19.16	85.0	0	89	2e
407B	Schley loam, 1 to 4 percent slopes	13.65	11.79	81.0	0	91	2w
241B	Burkhardt-Saude complex, 2 to 5 percent slopes	10.02	8.65	33.0	0	58	4e
177	Saude loam, 0 to 2 percent slopes	5.21	4.5	60.0	0	77	2s
1226	Lawler loam, 0 to 2 percent slopes, rarely flooded	3.28	2.83	59.0	0	88	2s
408B	Olin fine sandy loam, 2 to 5 percent slopes	1.25	1.08	74.0	0	77	2e
776C	Lilah sandy loam, 2 to 9 percent slopes	0.09	0.08	5.0	0	43	4s
471	Oran loam, 1 to 3 percent slopes	0.01	0.01	74.0	0	83	1
TOTALS		115.82(*)	100%	79.03	-	85.31	2.17

(*) Total acres may differ in the second decimal compared to the sum of each acreage soil. This is due to a round error because we only show the acres of each soil with two decimal.





Krebsbach Family Farm

Buchanan County, Iowa, 220 AC +/-



 Boundary

|  Boundary 66.41 ac

SOIL CODE	SOIL DESCRIPTION	ACRES	%	CSR2	CPI	NCCPI	CAP
1585	Spillville-Coland complex, 0 to 2 percent slopes, frequently flooded	21.32	32.11	22.0	0	65	5w
585	Spillville-Coland complex, 0 to 2 percent slopes	13.4	20.18	76.0	0	92	2w
407B	Schley loam, 1 to 4 percent slopes	9.83	14.8	81.0	0	91	2w
177	Saude loam, 0 to 2 percent slopes	9.14	13.77	60.0	0	77	2s
391B	Clyde-Floyd complex, 1 to 4 percent slopes	6.57	9.89	87.0	0	88	2w
171B	Bassett loam, 2 to 5 percent slopes	3.45	5.2	85.0	0	89	2e
159C	Finchford loamy sand, 2 to 9 percent slopes	1.58	2.38	33.0	0	53	4s
41B	Sparta loamy fine sand, 2 to 5 percent slopes	1.12	1.69	39.0	0	55	4s
TOTALS		66.4(*)	100%	57.12	-	79.03	3.04

(*) Total acres may differ in the second decimal compared to the sum of each acreage soil. This is due to a round error because we only show the acres of each soil with two decimal.



Krebsbach Family Farm

Buchanan County, Iowa, 220 AC +/-



mapbox

Boundary

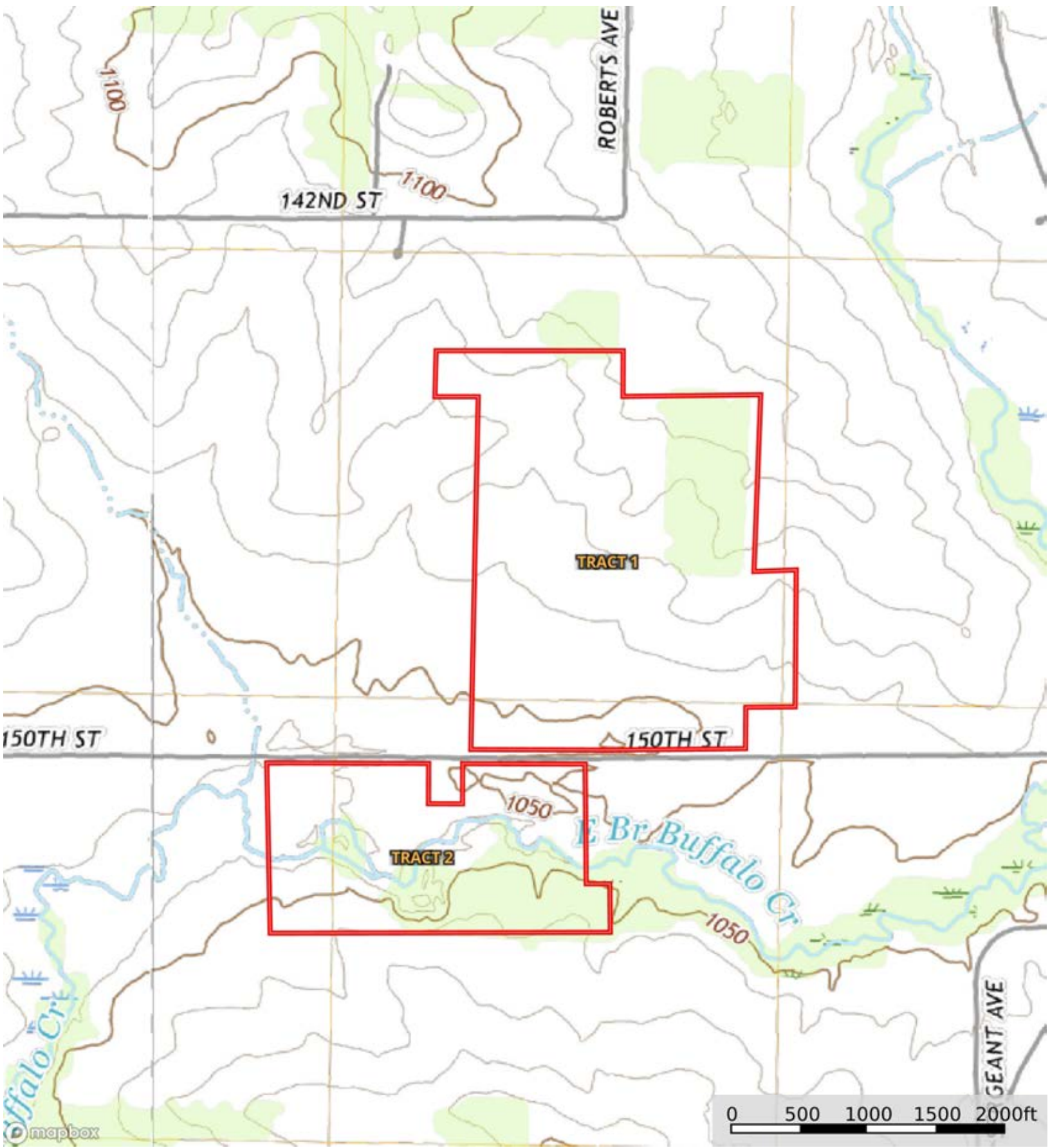
SOIL CODE	SOIL DESCRIPTION	ACRES	%	CSR2	CPI	NCCPI	CAP
585	Spillville-Coland complex, 0 to 2 percent slopes	11.28	44.25	76.0	0	92	2w
177	Saude loam, 0 to 2 percent slopes	6.7	26.28	60.0	0	77	2s
171B	Bassett loam, 2 to 5 percent slopes	3.5	13.73	85.0	0	89	2e
391B	Clyde-Floyd complex, 1 to 4 percent slopes	3.37	13.22	87.0	0	88	2w
1585	Spillville-Coland complex, 0 to 2 percent slopes, frequently flooded	0.44	1.73	22.0	0	65	5w
159C	Finchford loamy sand, 2 to 9 percent slopes	0.19	0.75	33.0	0	53	4s
407B	Schley loam, 1 to 4 percent slopes	0.01	0.04	81.0	0	91	2w
TOTALS		25.49(*)	100%	73.23	-	86.36	2.07

(*) Total acres may differ in the second decimal compared to the sum of each acreage soil. This is due to a round error because we only show the acres of each soil with two decimal.



Krebsbach Family Farm

Buchanan County, Iowa, 220 AC +/-



 Boundary