

LAND FOR SALE

39.7+/- Acres • Sumner County, Kansas
Offered at \$140,000

Highlights:

- Good location for rural home site
- Added income potential from excellent quality farm ground



L-1800191

Property Location: From Peck, Kansas, the property is located one mile east and three and three-quarters miles south.

Legal Description: S $\frac{1}{2}$ N $\frac{1}{2}$ SE $\frac{1}{4}$ of Section 19-30-1E, Sumner County, Kansas.

For additional information, please contact:

Chris Ostmeyer, AFM/Agent
Kechi, Kansas

Office: (316) 788-4240

Cell: (785) 672-8672

COstmeyer@FarmersNational.com

www.FarmersNational.com/ChrisOstmeyer



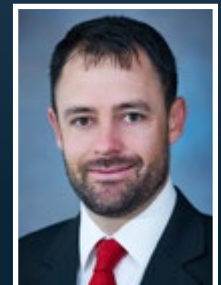
Trevor Smith, Agent
Winfield, Kansas

Office: (620) 705-5763

Cell: (316) 618-4406

TSmith@FarmersNational.com

www.FarmersNational.com/TrevorSmith



Serving America's Landowners Since 1929

www.FarmersNational.com



Real Estate Sales • Auctions • Farm and Ranch Management • Appraisals • Insurance • Consultations
Oil and Gas Management • Lake Management • Forest Resource Management • National Hunting Leases • FNC Ag Stock

Property Information

Property Description: The property offers a desirable location to build a rural residence and is enhanced with added income potential of high quality cropland. It is located six miles west and three and three-quarters miles south of Mulvane, Kansas along Seneca Road. There is an existing water well on the property and a 60x30 livestock shed.

Farm Data:

Cropland 35.47 acres
 Non-crop 4.23 acres

FSA Information:

	<u>Base</u>	<u>Yield</u>
Wheat	37.13 acres	58 bushels ARC-CO
Grain Sorghum	.91 acres	76 bushels ARC-CO
Soybeans	4.24 acres	50 bushels ARC-CO

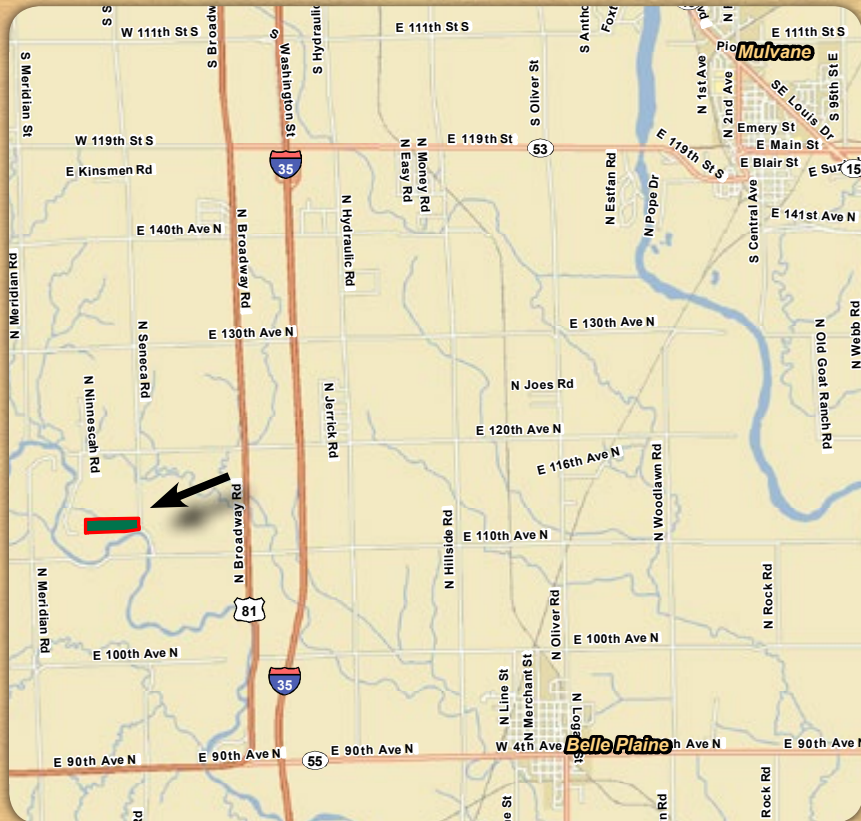
2017 Taxes: \$410.92

Price: \$140,000

Aerial Photo



Property Location Map



Information provided was obtained from sources deemed reliable, however, the broker makes no guarantees as to its accuracy. All prospective buyers are urged to inspect the property, its title, and to rely on their own conclusions. Seller reserves the right to refuse any or all offers submitted and may withdraw the property from offering without notice. Farmers National Company and its representatives are the designated agents for the seller.