



Sec. 27

70N 43W

Sec. 34

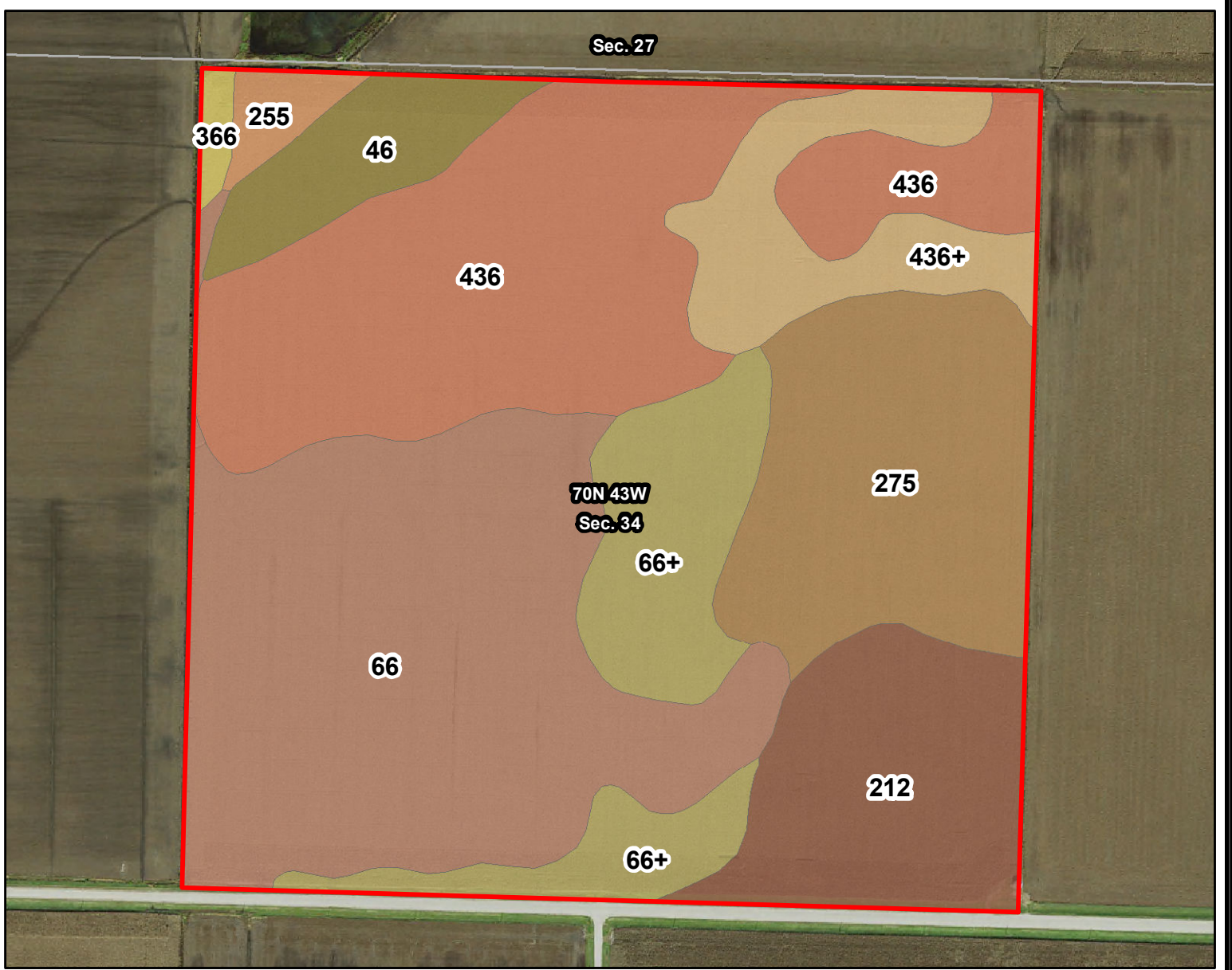
J18

215 Ave



L-1800569
Fremont Co., IA

Latitude: 40.8256°N
Longitude: -95.7753°W
Imagery Source: USDA NAIP
Soil Data Source: USDA NRCS
Boundaries Are Approximate

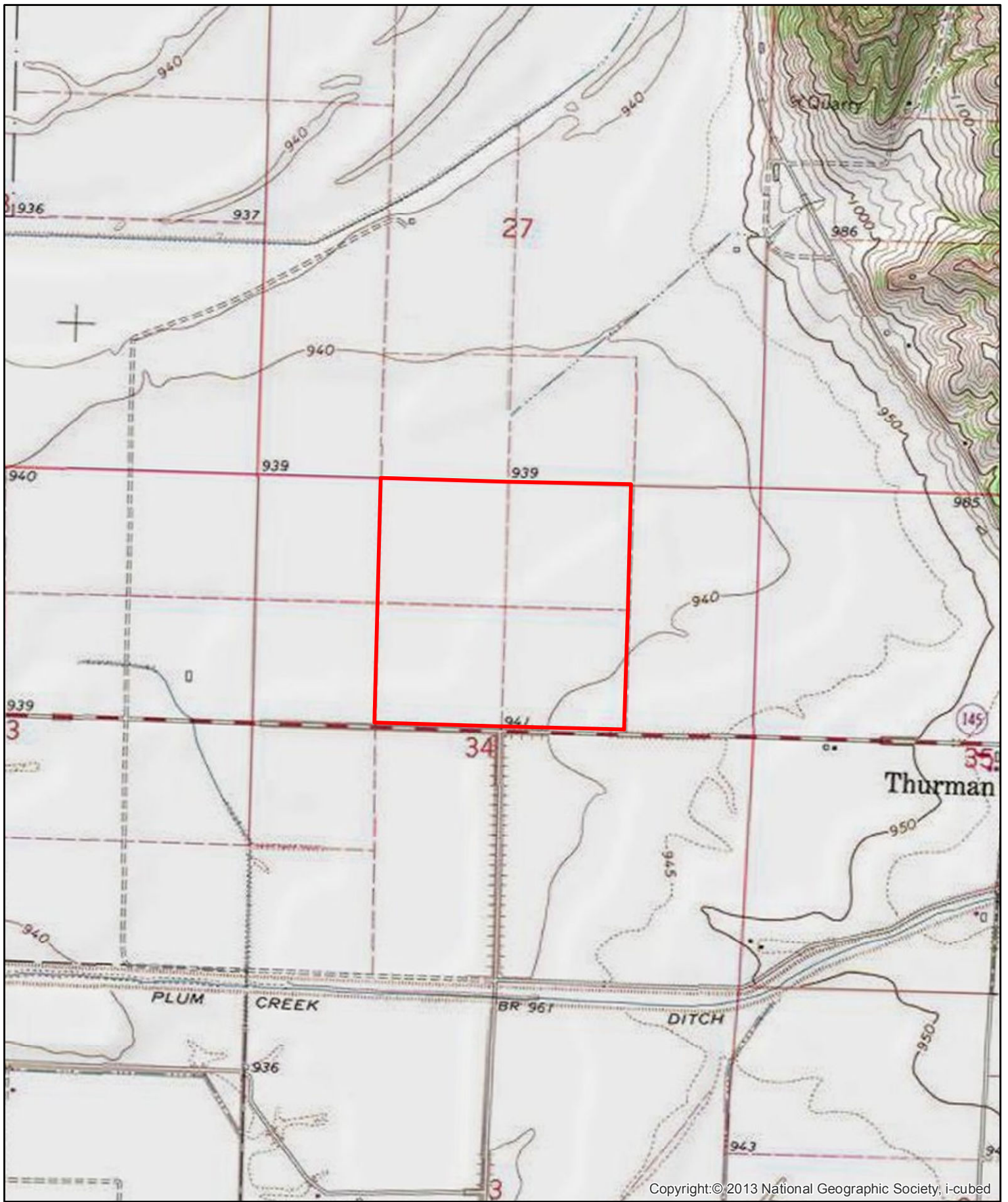


MAP SYMBOL	NAME	NON-IRR LCC	IRR LCC	SRPG	ACRES
66	Luton silty clay	IIIw	40	58	45.3
436	Lakeport silty clay loam	Iw	80	86	37.8
275	Moville silt loam	IIw	72	69	22.1
212	Kennebec silt loam, 0 to 2 percent slopes, occasionally flooded	Iw	90	91	16.3
66+	Luton silt loam, overwash	IIIw	42	52	15.8
436+	Lakeport silt loam, overwash	Iw	80	86	10.5
46	Keg silt loam	Iw	90	98	6.6
255	Cooper silty clay loam	IIw	70	76	1.9
366	Luton silty clay loam	IIIw	70	52	0.9
TOTAL				72.8	157.2



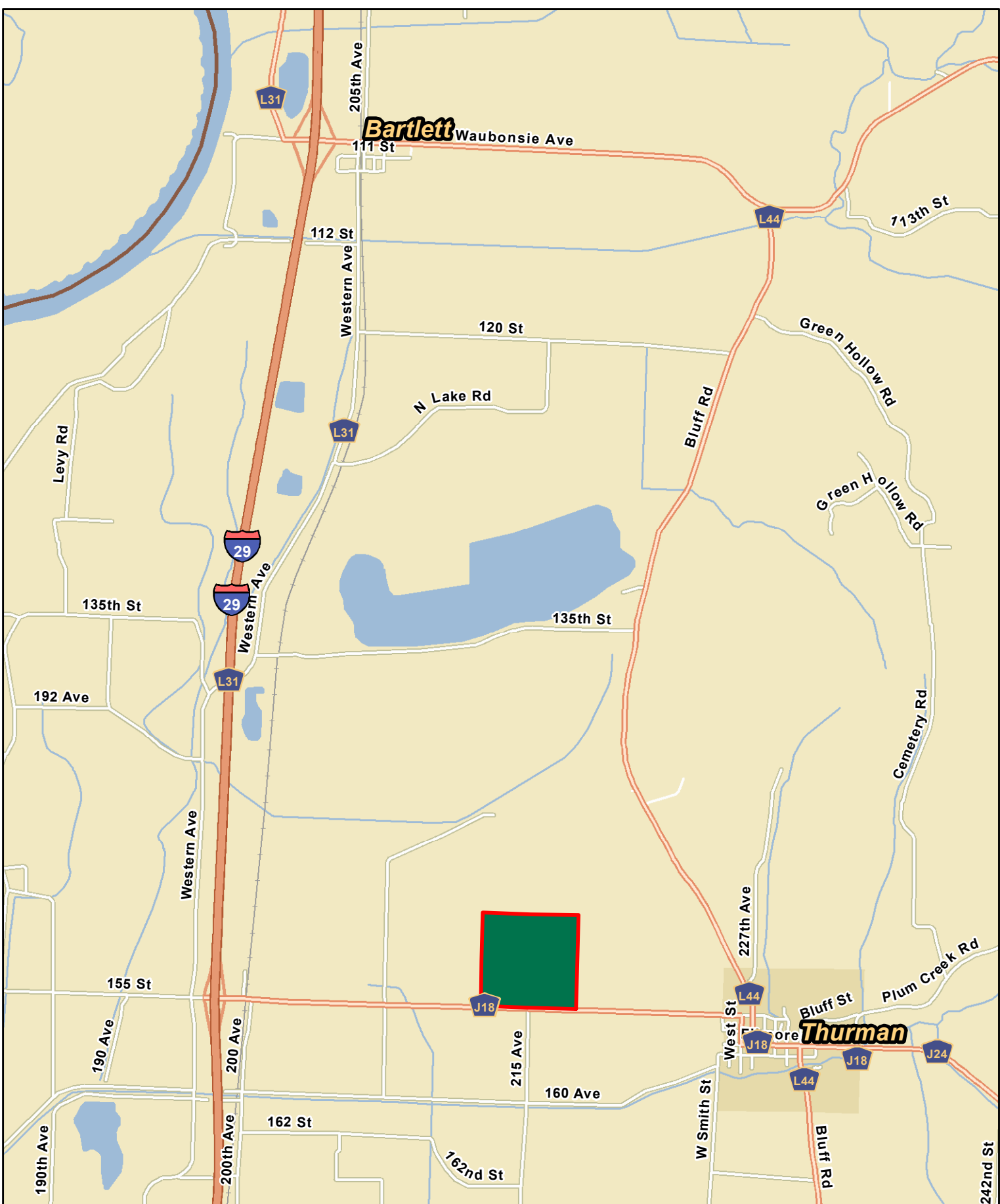
**L-1800569
Fremont Co., IA**

Latitude: 40.8256°N
 Longitude: -95.7753°W
 Imagery Source: USDA NAIP
 Soil Data Source: USDA NRCS
 Boundaries Are Approximate



L-1800569
Fremont Co., IA

Latitude: 40.8256°N
Longitude: -95.7753°W
Imagery Source: USDA NAIP
Soil Data Source: USDA NRCS
Boundaries Are Approximate



**L-1800569
Fremont Co., IA**

Latitude: 40.8524°N
 Longitude: -95.7792°W
 Imagery Source: USDA NAIP
 Soil Data Source: USDA NRCS
 Boundaries Are Approximate