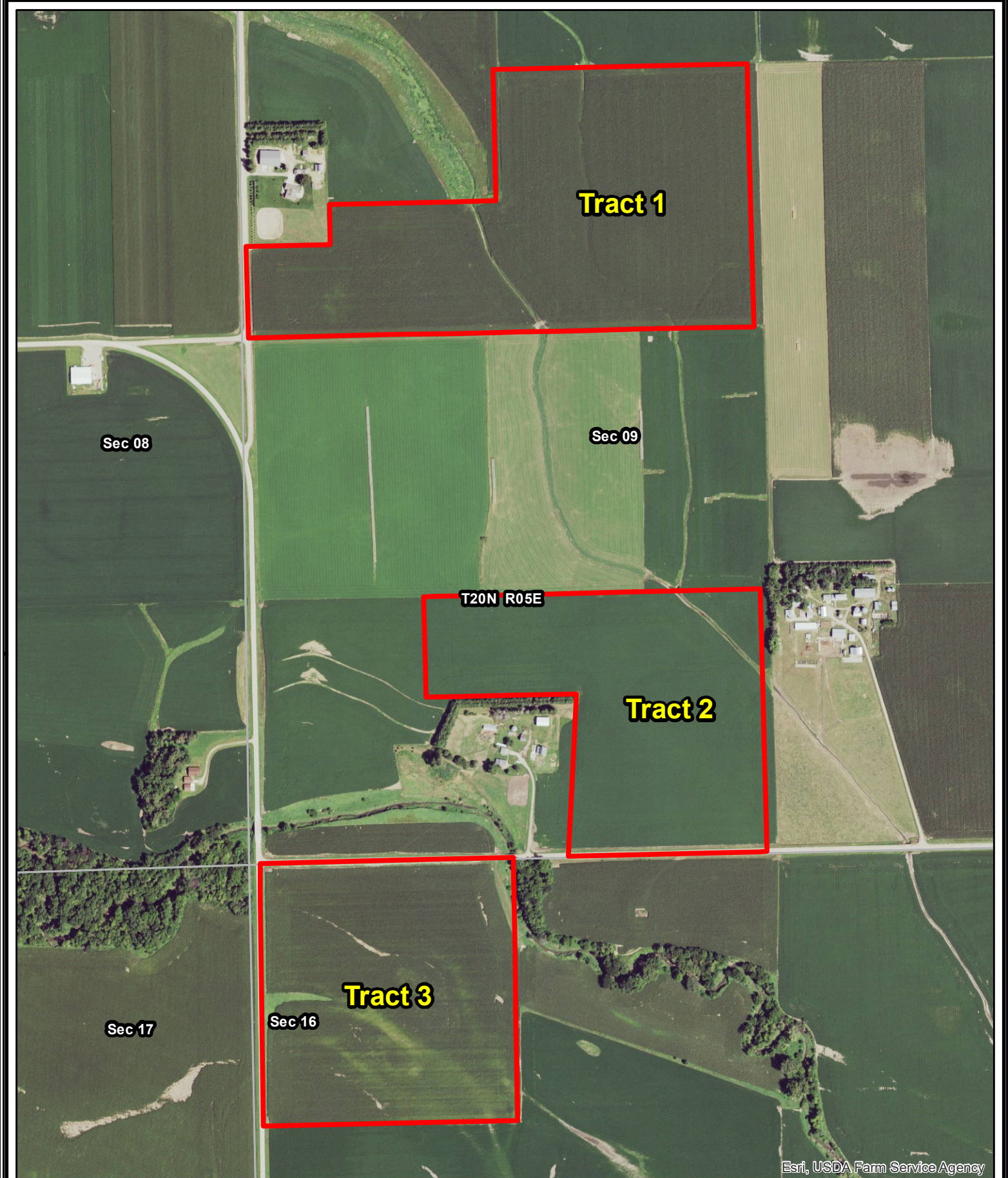


L-1800810
Joseph C. Costa
Dodge County, Nebraska

Latitude: 41.7173°N
Longitude: -96.8628°W
Imagery Source: USDA NAIP
Soil Data Source: USDA NRCS
Boundaries Are Approximate

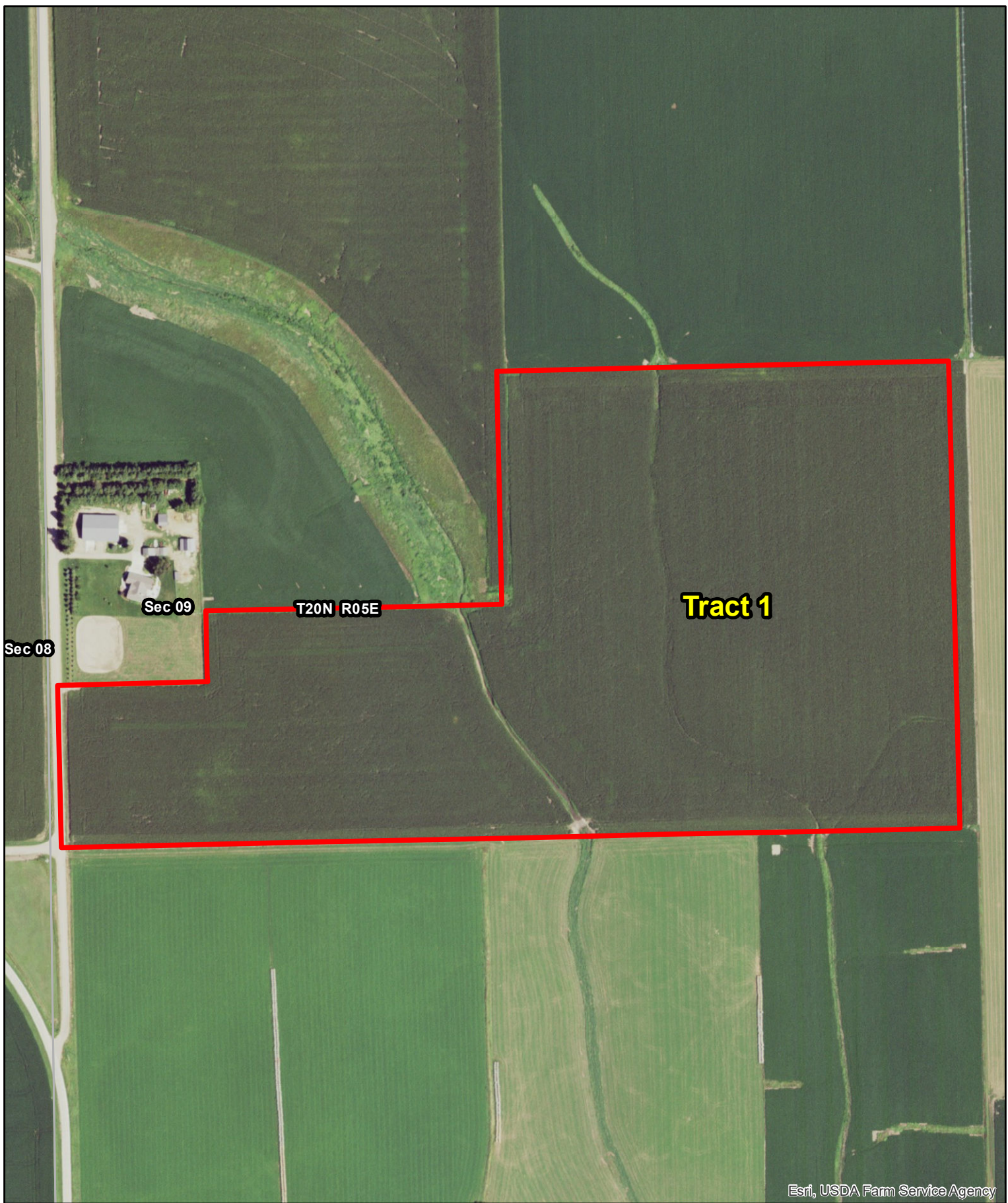


Esri, USDA Farm Service Agency



L-1800810
Joseph C. Costa
Dodge County, Nebraska

Latitude: 41.7173°N
Longitude: -96.8628°W
Imagery Source: USDA NAIP
Soil Data Source: USDA NRCS
Boundaries Are Approximate

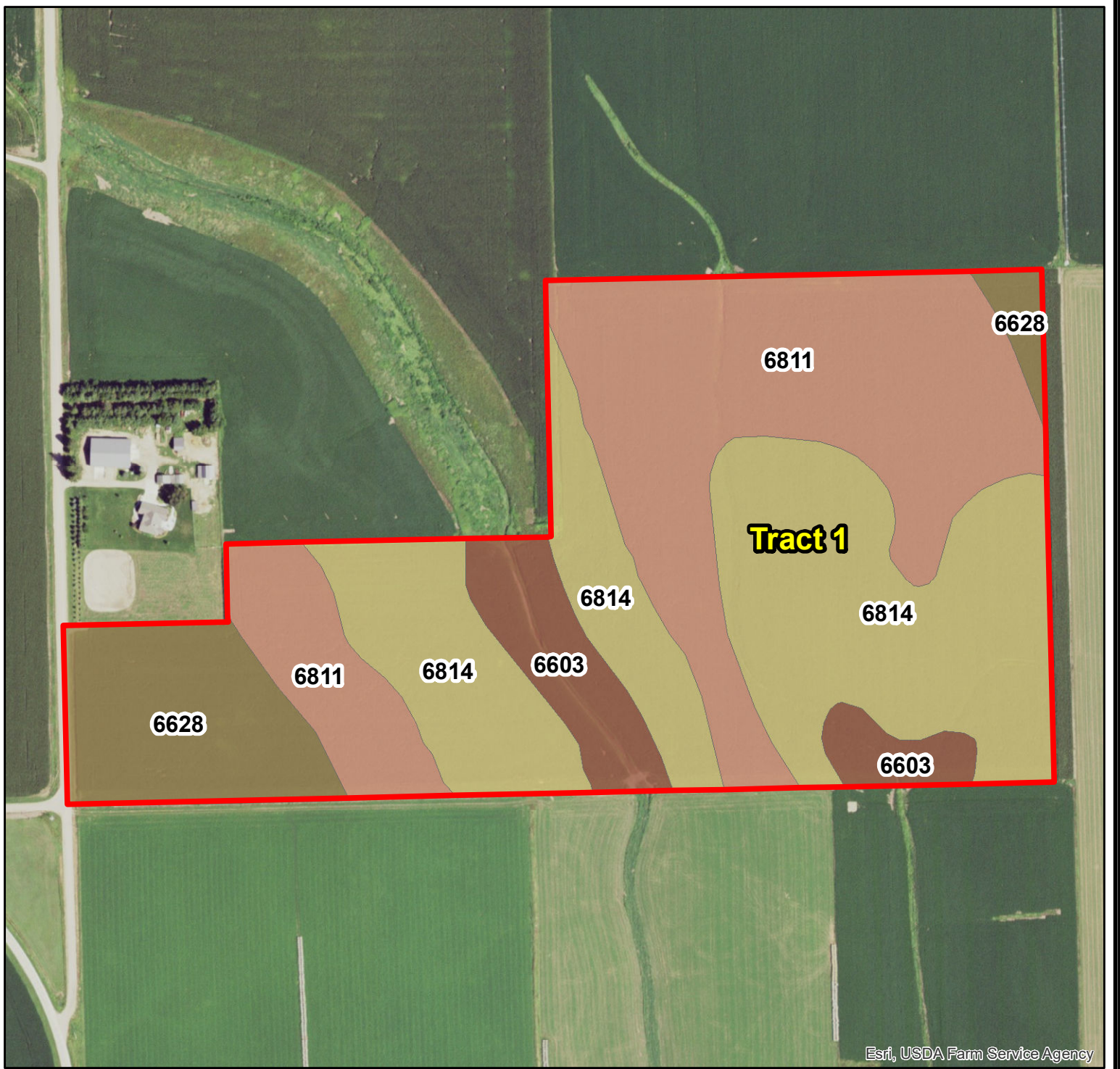


Esri, USDA Farm Service Agency



L-1800810
Joseph C. Costa
Dodge County, Nebraska

Latitude: 41.7228°N
Longitude: -96.8627°W
Imagery Source: USDA NAIP
Soil Data Source: USDA NRCS
Boundaries Are Approximate

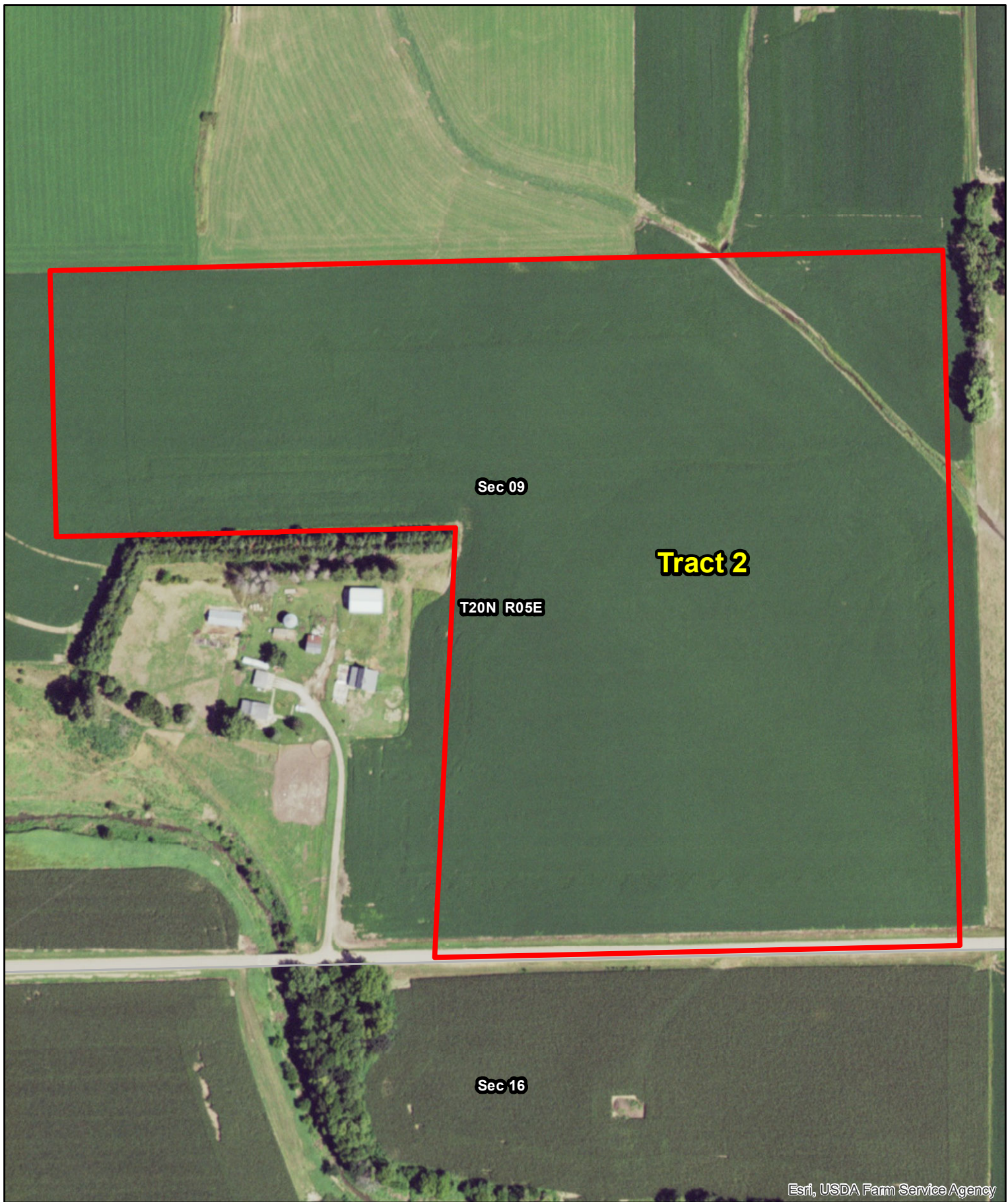


MAP SYMBOL	NAME	NON IRR LCC	IRR LCC	SRPG	ACRES
6814	Moody silty clay loam, 6 to 11 percent slopes, eroded	IIIe	IVe	0	23.3
6811	Moody silty clay loam, 2 to 6 percent slopes	IIe	IIIe	76	21.7
6628	Belfore silty clay loam, 0 to 2 percent slopes	I	I	74	7.2
6603	Alcester silty clay loam, 2 to 6 percent slopes	IIe	IIIe	0	4.8
TOTAL				38.3	57.0



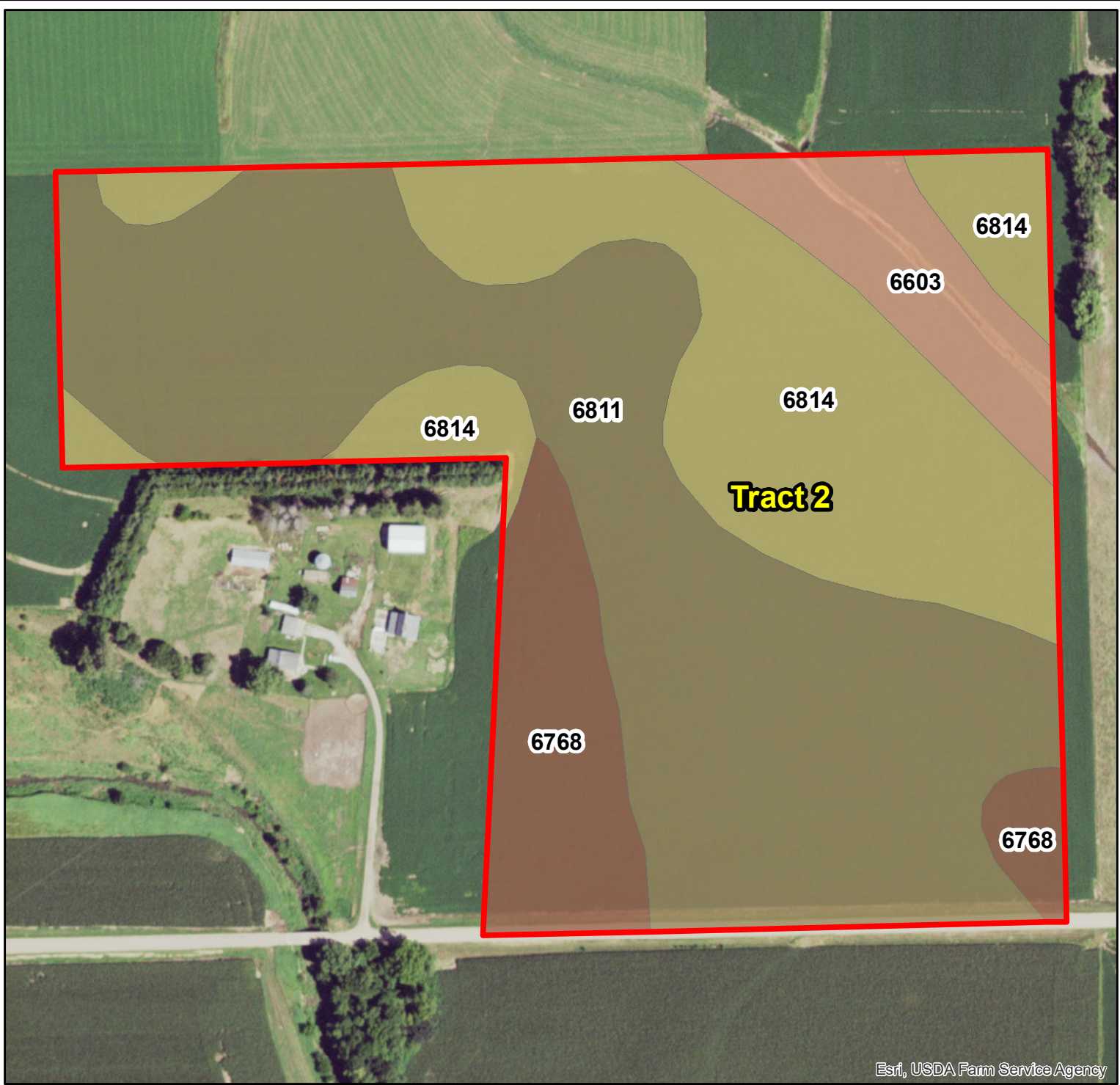
L-1800810
Joseph C. Costa
Dodge County, Nebraska

Latitude: 41.7228°N
 Longitude: -96.8627°W
 Imagery Source: USDA NAIP
 Soil Data Source: USDA NRCS
 Boundaries Are Approximate



L-1800810
Joseph C. Costa
Dodge County, Nebraska

Latitude: 41.7155°N
Longitude: -96.8612°W
Imagery Source: USDA NAIP
Soil Data Source: USDA NRCS
Boundaries Are Approximate



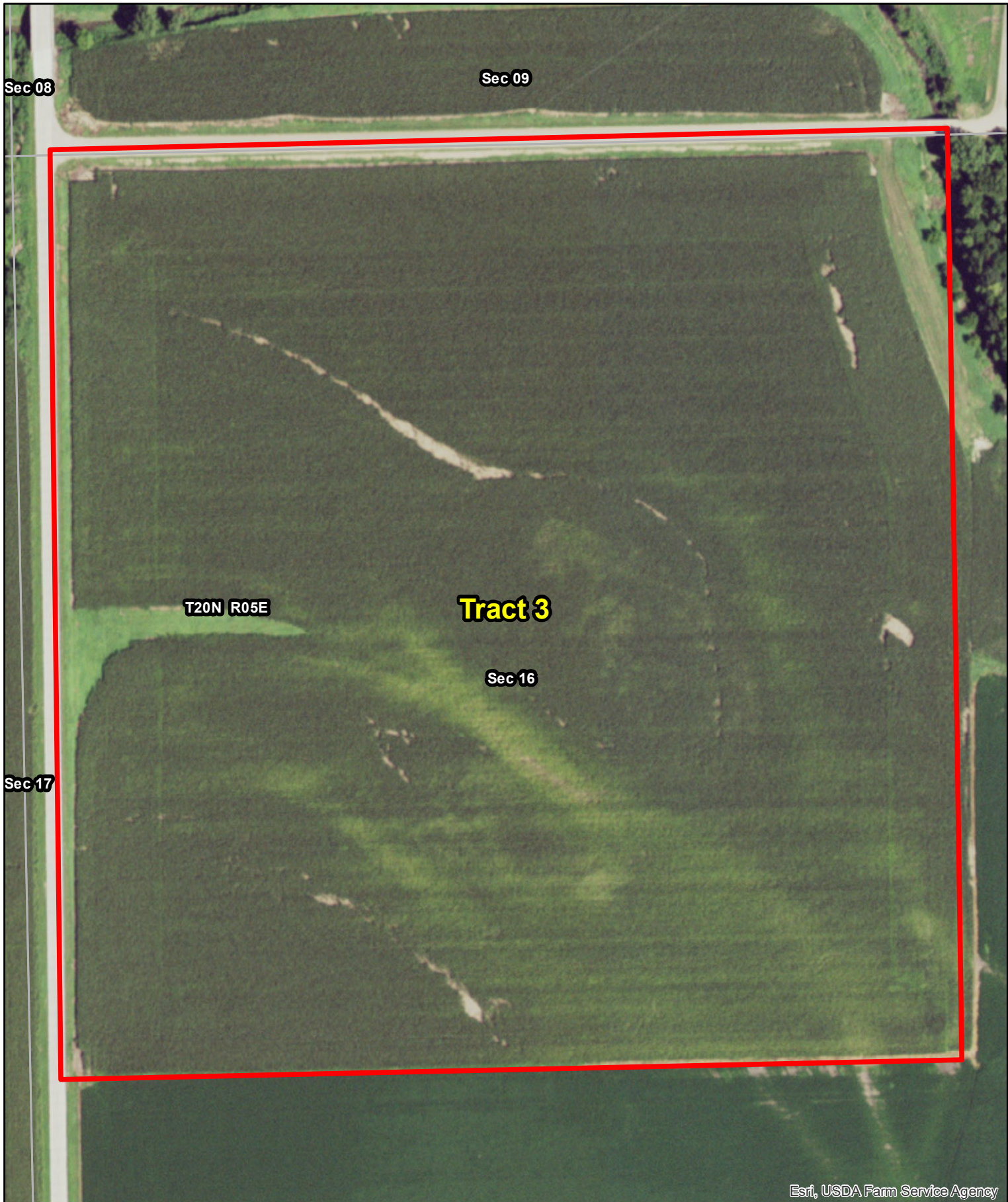
Esri, USDA Farm Service Agency

MAP SYMBOL	NAME	NON IRR LCC	IRR LCC	SRPG	ACRES
6811	Moody silty clay loam, 2 to 6 percent slopes	Ile	IIIe	76	19.5
6814	Moody silty clay loam, 6 to 11 percent slopes, eroded	IIIe	IVe	0	11.7
6768	Nora silty clay loam, 6 to 11 percent slopes, eroded	IIIe	IVe	66	4.4
6603	Alcester silty clay loam, 2 to 6 percent slopes	Ile	IIIe	0	2.8
TOTAL				46.2	38.4



L-1800810
Joseph C. Costa
Dodge County, Nebraska

Latitude: 41.7155°N
 Longitude: -96.8612°W
 Imagery Source: USDA NAIP
 Soil Data Source: USDA NRCS
 Boundaries Are Approximate



Esri, USDA Farm Service Agency



L-1800810
Joseph C. Costa
Dodge County, Nebraska

Latitude: 41.7119°N
Longitude: -96.8651°W
Imagery Source: USDA NAIP
Soil Data Source: USDA NRCS
Boundaries Are Approximate



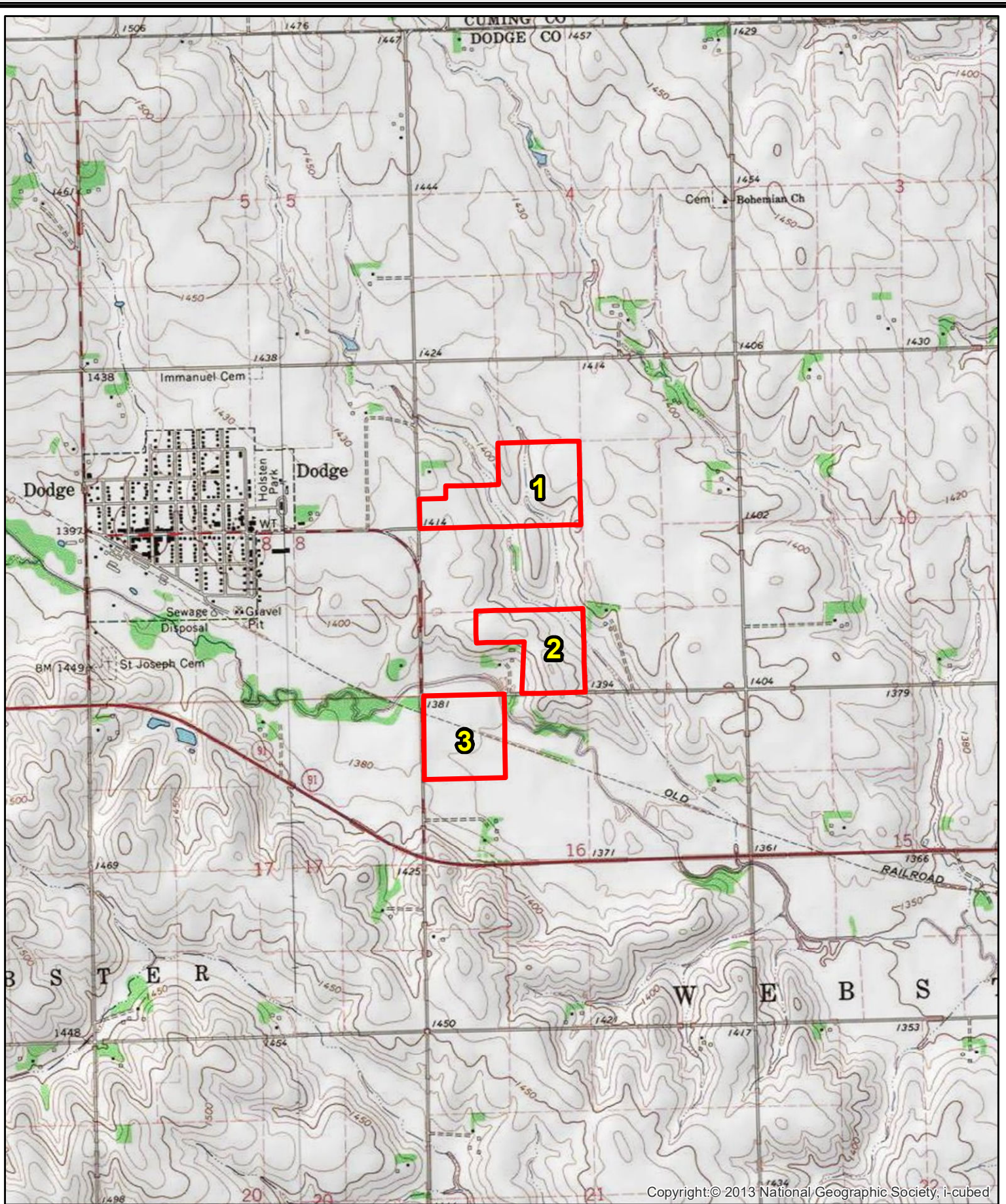
Esri, USDA Farm Service Agency

MAP SYMBOL	NAME	NON IRR LCC	IRR LCC	SRPG	ACRES
7901	Monona silt loam, terrace, 0 to 2 percent slopes	I	I	72	19.9
6385	Shell silt loam, occasionally flooded	IIw	IIw	72	16.5
6811	Moody silty clay loam, 2 to 6 percent slopes	Ile	IIIe	76	3.0
TOTAL				72.3	39.4



L-1800810
Joseph C. Costa
Dodge County, Nebraska

Latitude: 41.7119°N
 Longitude: -96.8651°W
 Imagery Source: USDA NAIP
 Soil Data Source: USDA NRCS
 Boundaries Are Approximate



Copyright:© 2013 National Geographic Society, i-cubed



L-1800810
Joseph C. Costa
Dodge County, Nebraska

Latitude: 41.7173°N
Longitude: -96.8628°W
Imagery Source: USDA NAIP
Soil Data Source: USDA NRCS
Boundaries Are Approximate