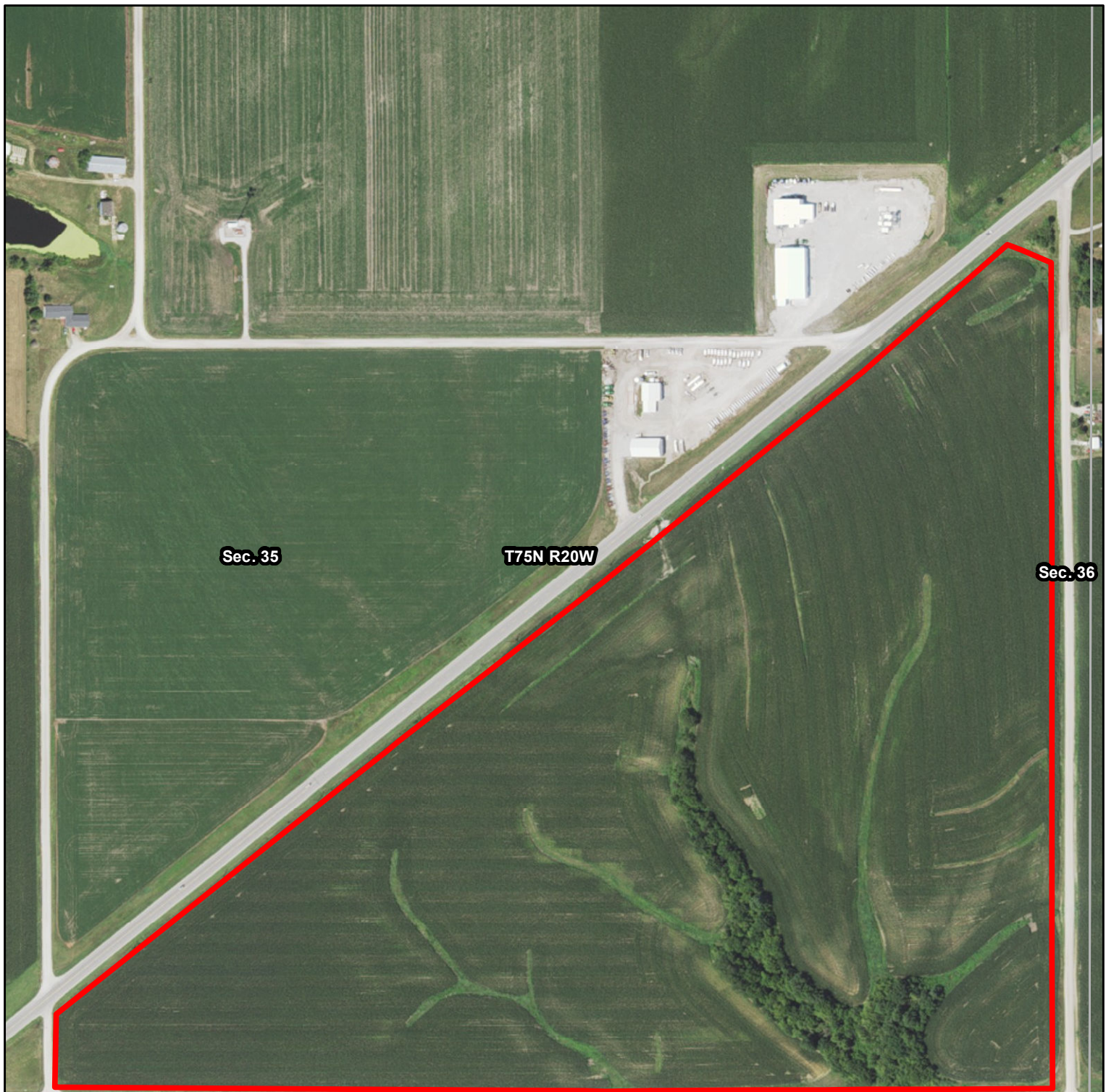


L-1800825
Stevenson
Marion County, Iowa

Latitude: 41.2917°N
 Longitude: -93.1073°W
 Imagery Source: USDA NAIP
 Soil Data Source: USDA NRCS
 Boundaries Are Approximate



Sec. 35

T75N R20W

Sec. 36



Sec. 2

T74N R20W

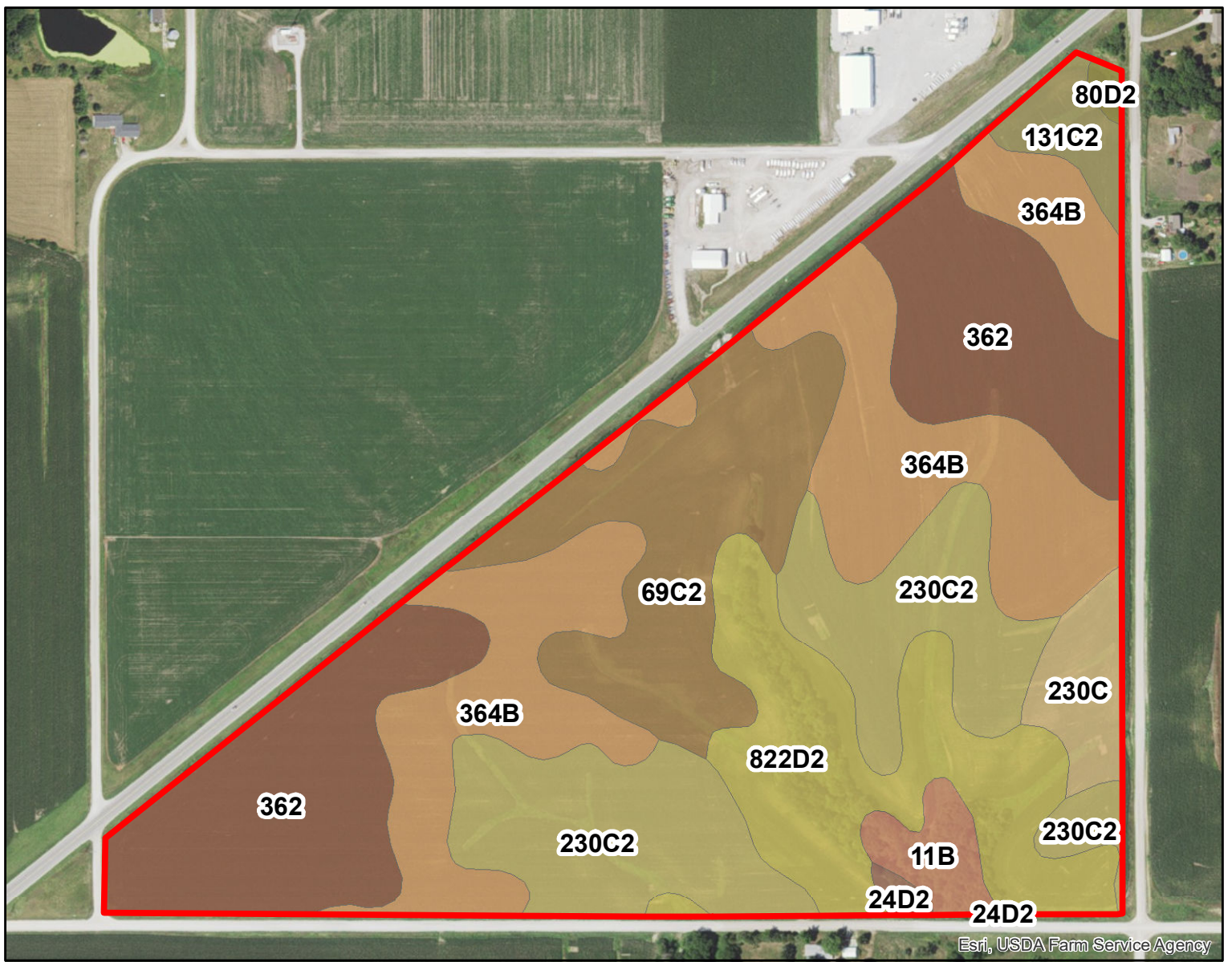
Sec. 1

Esri, USDA Farm Service Agency



L-1800825
Stevenson
Marion County, Iowa

Latitude: 41.2517°N
Longitude: -93.1237°W
Imagery Source: USDA NAIP
Soil Data Source: USDA NRCS
Boundaries Are Approximate



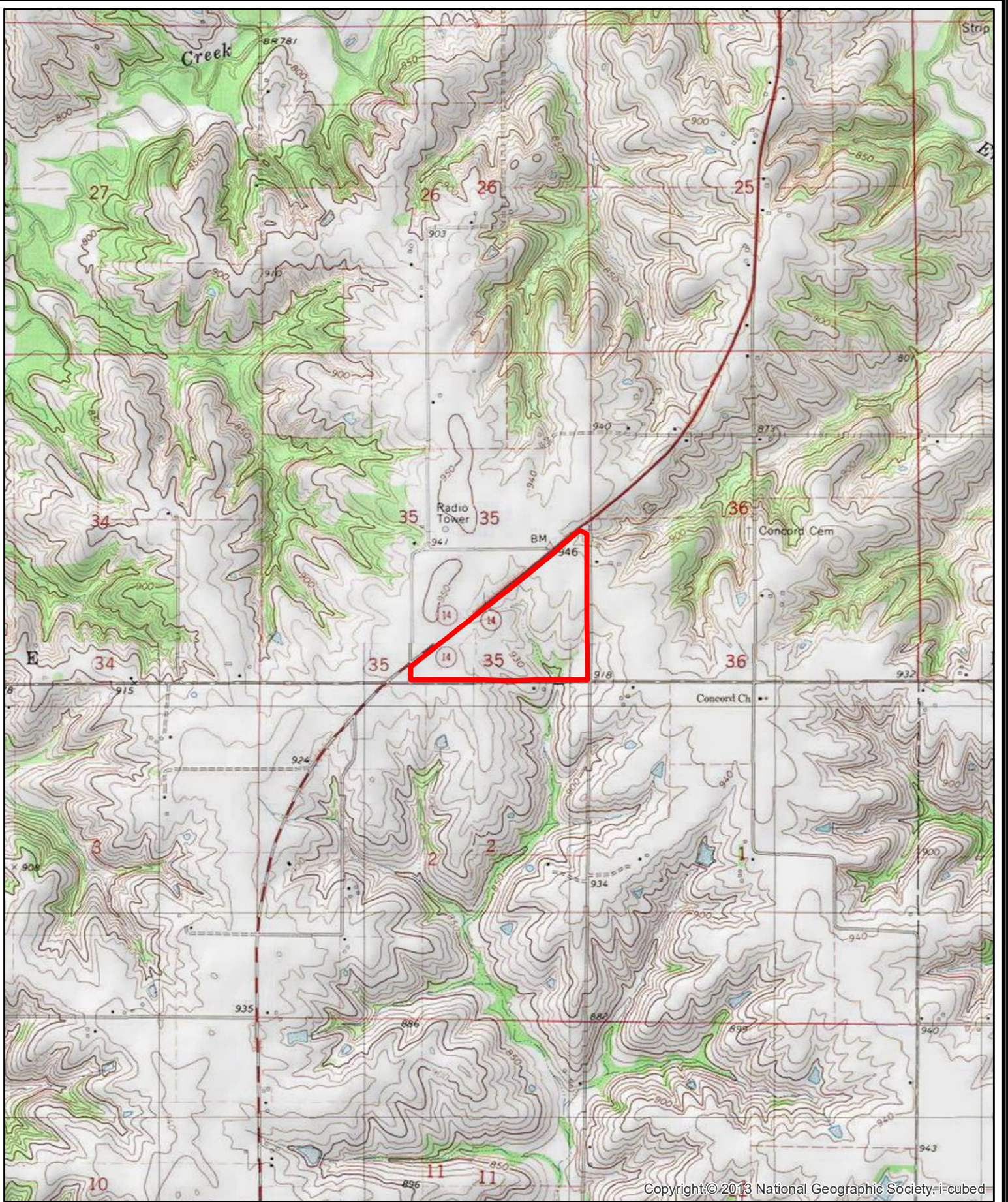
Esri, USDA Farm Service Agency

MAP SYMBOL	NAME	NON IRR		
		LCC	CSR2	ACRES
364B	Grundy silty clay loam, 2 to 5 percent slopes	IIe	72	21.0
362	Haig silt loam, 0 to 2 percent slopes	IIw	83	18.7
230C2	Clearfield-Arispe silty clay loams, 5 to 9 percent slopes, moderately eroded	IIIw	67	15.8
822D2	Lamoni silty clay loam, 9 to 14 percent slopes, moderately eroded	IVe	29	11.9
69C2	Clearfield silty clay loam, 5 to 9 percent slopes, moderately eroded	IIIw	72	11.6
230C	Clearfield-Arispe silty clay loams, 5 to 9 percent slopes	IIIw	70	2.6
11B	Colo-Ely silty clay loams, 2 to 5 percent slopes	IIe	78	1.8
131C2	Pershing silt loam, 5 to 9 percent slopes, moderately eroded	IIIe	62	1.8
24D2	Shelby loam, 9 to 14 percent slopes, moderately eroded	IIIe	45	0.4
80D2	Clinton silt loam, 9 to 14 percent slopes, eroded	IIIe	46	0.3
TOTAL			67.2	85.8



L-1800825
Stevenson
Marion County, Iowa

Latitude: 41.2517°N
 Longitude: -93.1237°W
 Imagery Source: USDA NAIP
 Soil Data Source: USDA NRCS
 Boundaries Are Approximate



Copyright © 2013 National Geographic Society, i-cubed



L-1800825
Stevenson
Marion County, Iowa

Latitude: 41.2517°N
Longitude: -93.1237°W
Imagery Source: USDA NAIP
Soil Data Source: USDA NRCS
Boundaries Are Approximate