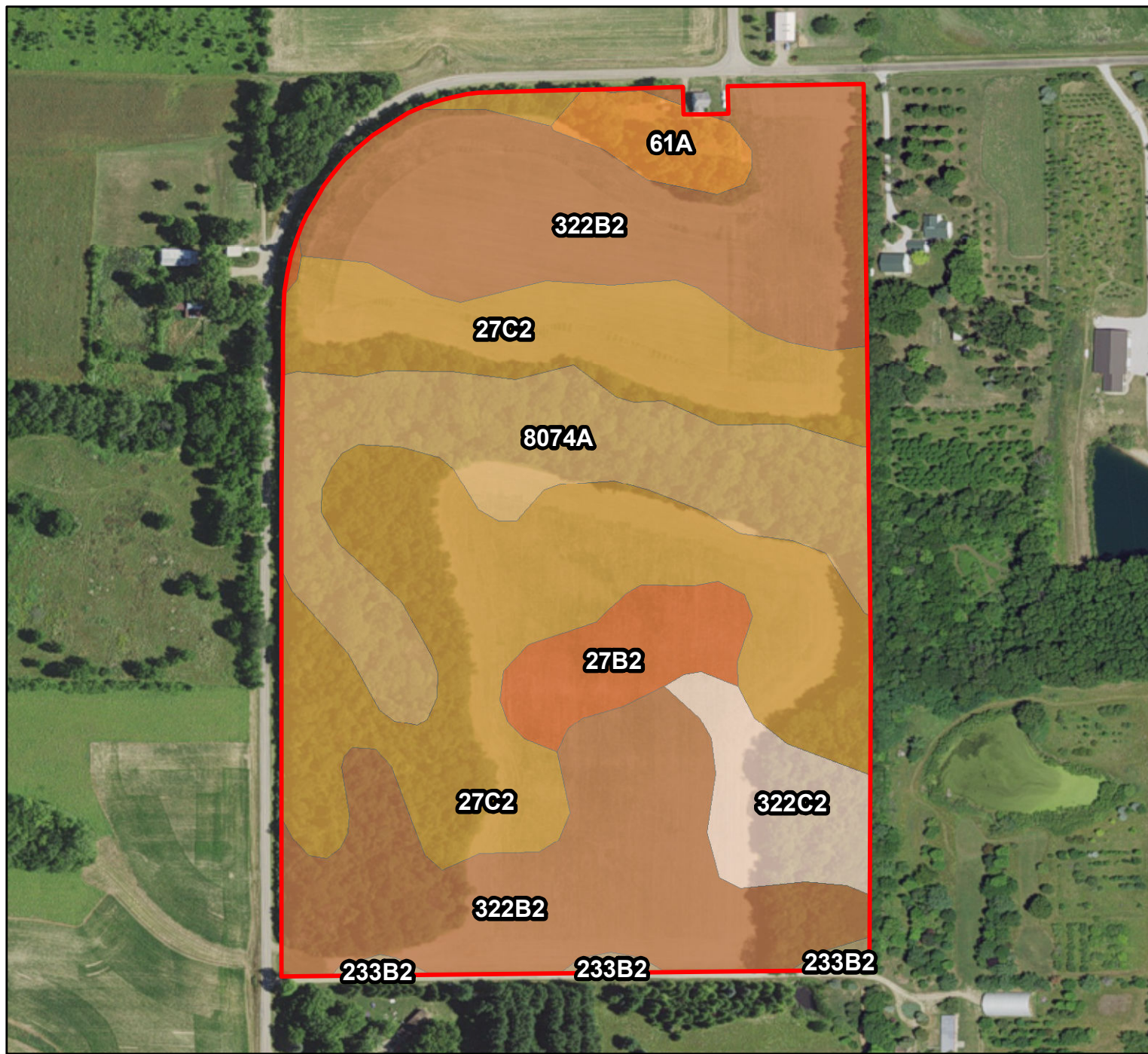




A-18577
McLean Co., IL

Latitude: 40.3387°N
Longitude: -88.9567°W
Imagery Source: USDA NAIP
Soil Data Source: USDA NRCS
Boundaries Are Approximate

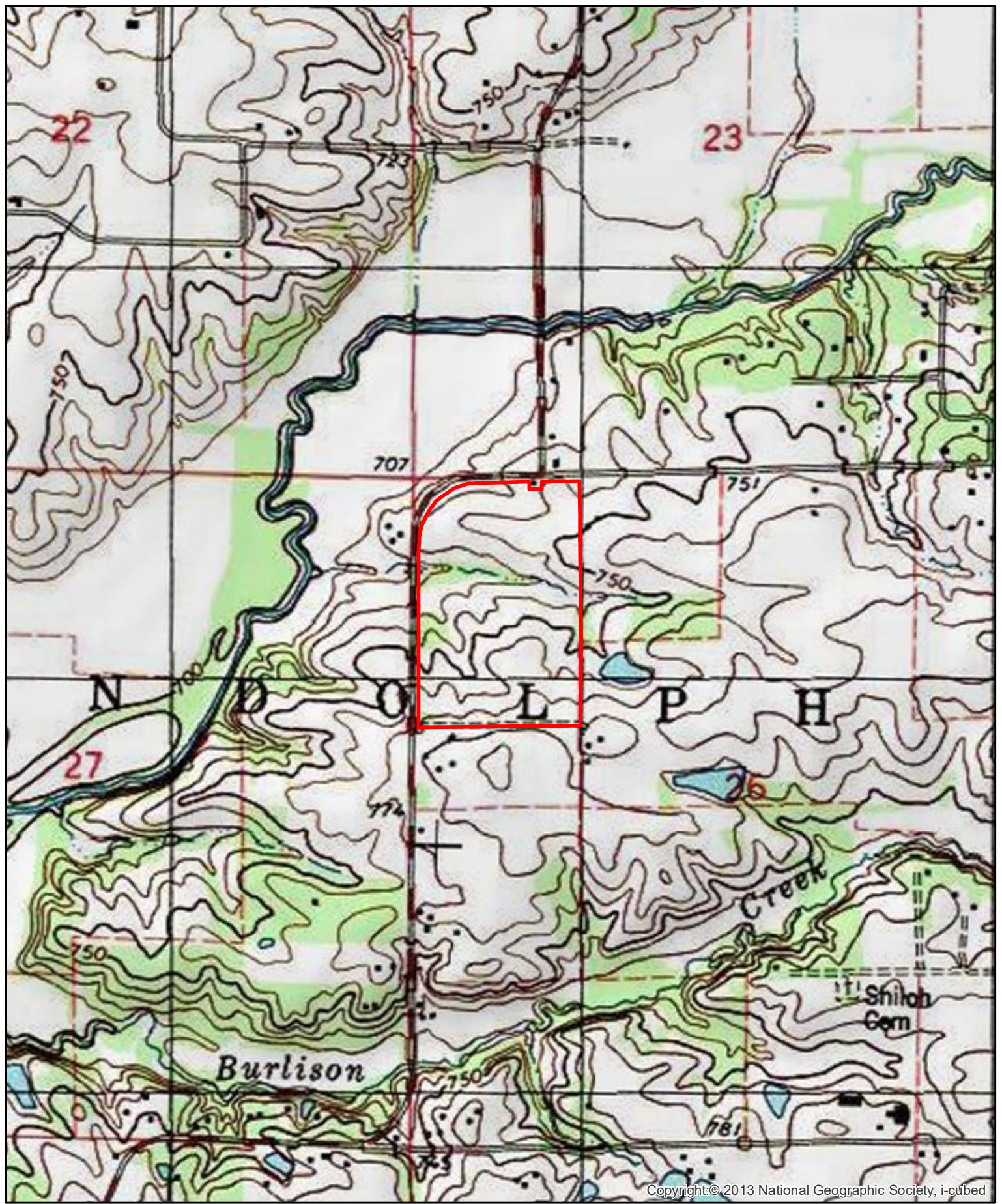


MAP SYMBOL	NAME	NON IRR LCC	PRODUCTIVITY INDEX	CORN YIELD	BEANS YIELD	ACRES
322B2	Russell silt loam, Bloomington Ridged Plain, 2 to 5 percent slopes, eroded	lle	110	152	48	20.4
27C2	Miami silt loam, 5 to 10 percent slopes, eroded	llle	104	142	46	20.2
8074A	Radford silt loam, 0 to 2 percent slopes, occasionally flooded	llw	136	186	58	8.8
322C2	Russell silt loam, Bloomington Ridged Plain, 5 to 10 percent slopes, eroded	llle	108	149	47	2.8
27B2	Miami silt loam, 2 to 5 percent slopes, eroded	lle	106	145	47	2.7
61A	Atterberry silt loam, 0 to 2 percent slopes	llw	132	182	56	1.4
233B2	Birkbeck silt loam, 2 to 5 percent slopes, eroded	lle	116	159	49	0.5
TOTAL			112.2	154.1	49.0	56.8



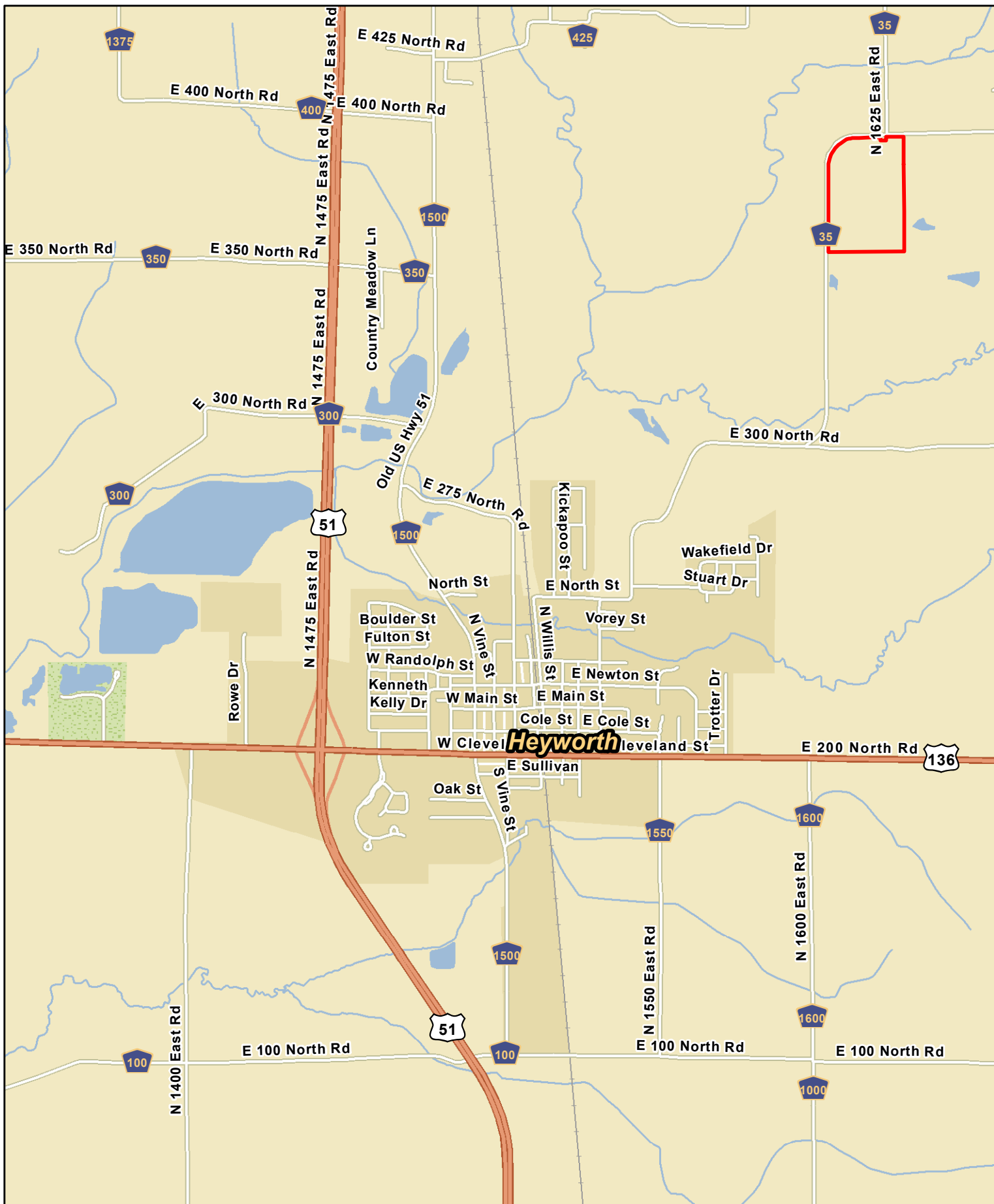
A-18577
McLean Co., IL

Latitude: 40.3387°N
Longitude: -88.9567°W
Imagery Source: USDA NAIP
Soil Data Source: USDA NRCS
Boundaries Are Approximate



A-18577
McLean Co., IL

Latitude: 40.3387°N
Longitude: -88.9567°W
Imagery Source: USDA NAIP
Soil Data Source: USDA NRCS
Boundaries Are Approximate



A-18577
McLean Co., IL

Latitude: 40.3190°N
 Longitude: -88.9786°W
 Imagery Source: USDA NAIP
 Soil Data Source: USDA NRCS
 Boundaries Are Approximate