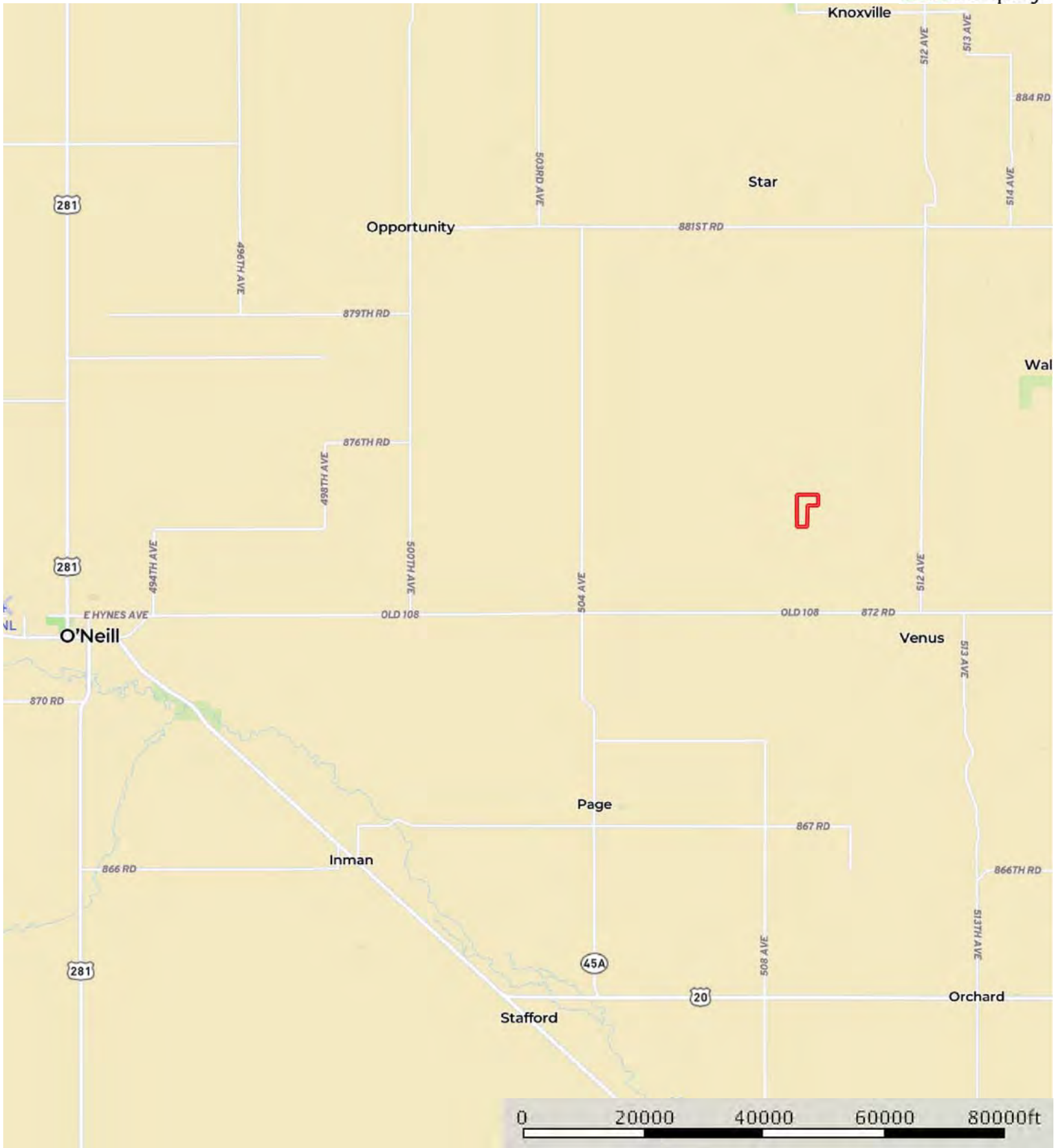


L-1900452

Holt County, Nebraska, 158 AC +/-



 Boundary

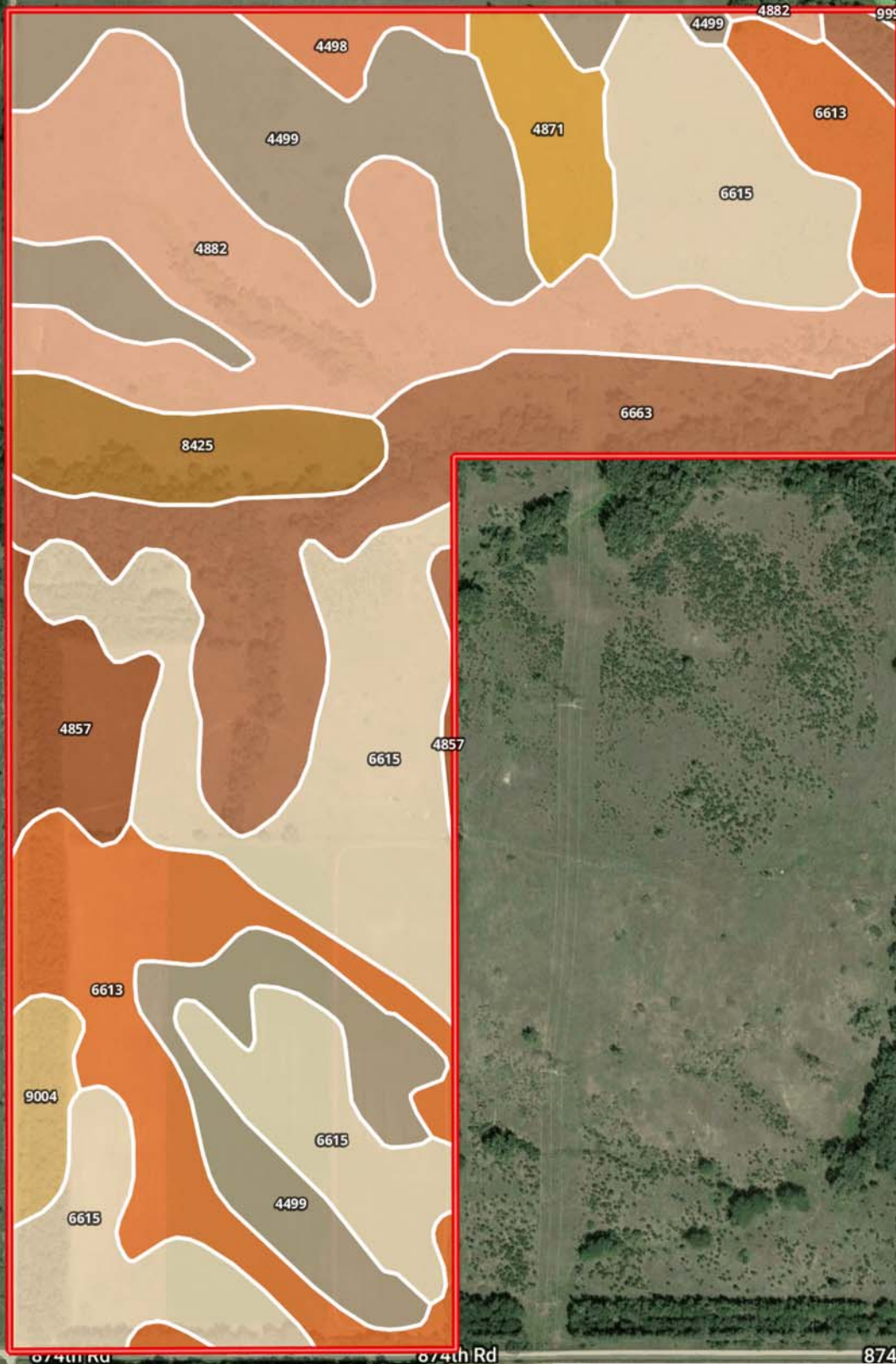


The information contained herein was obtained from sources deemed to be reliable. MapRight Services makes no warranties or guarantees as to the completeness or accuracy thereof.



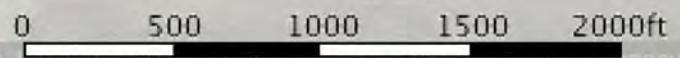
L-1900452

Holt County, Nebraska, 158 AC +/-



Google

Map data ©2019 Google



Boundary



The information contained herein was obtained from sources deemed to be reliable. MapRight Services makes no warranties or guarantees as to the completeness or accuracy thereof.

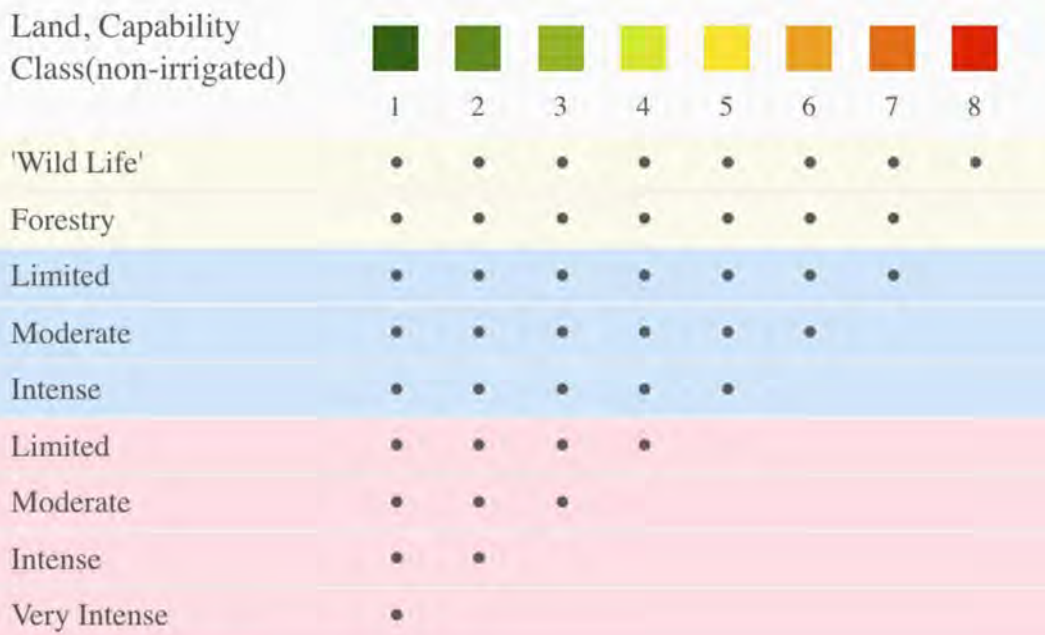
Boundary 158.2 ac

SOIL CODE	SOIL DESCRIPTION	ACRES	%	CAP
9999	Water	0.1	0.04	-
6613	Bazile silt loam, 0 to 2 percent slopes	19.5	12.35	2c
6615	Bazile silt loam, 2 to 6 percent slopes	42.7	26.96	3e
4871	Valentine-Dunday loamy fine sands, 0 to 3 percent slopes	4.8	3.06	4e
4857	Valentine-Dunday loamy fine sands, moist, 3-9 percent slopes	5.9	3.72	6e
4499	Dunday loamy sand, 3 to 6 percent slopes	26.1	16.5	4e
4882	Valentine-Simeon sands, 9 to 30 percent slopes, eroded	25.4	16.04	6e
4498	Dunday loamy sand, 0 to 3 percent slopes	2.0	1.28	4e
9004	Anselmo fine sandy loam, 3 to 6 percent slopes	2.7	1.68	3e
8425	Boel-Inavale complex, channeled, frequently flooded	7.0	4.4	6w
6663	Brunswick-Paka complex, 17 to 30 percent slopes	22.1	13.96	6e
TOTALS		158.2	100%	4.23

### Capability Legend

Increased Limitations and Hazards

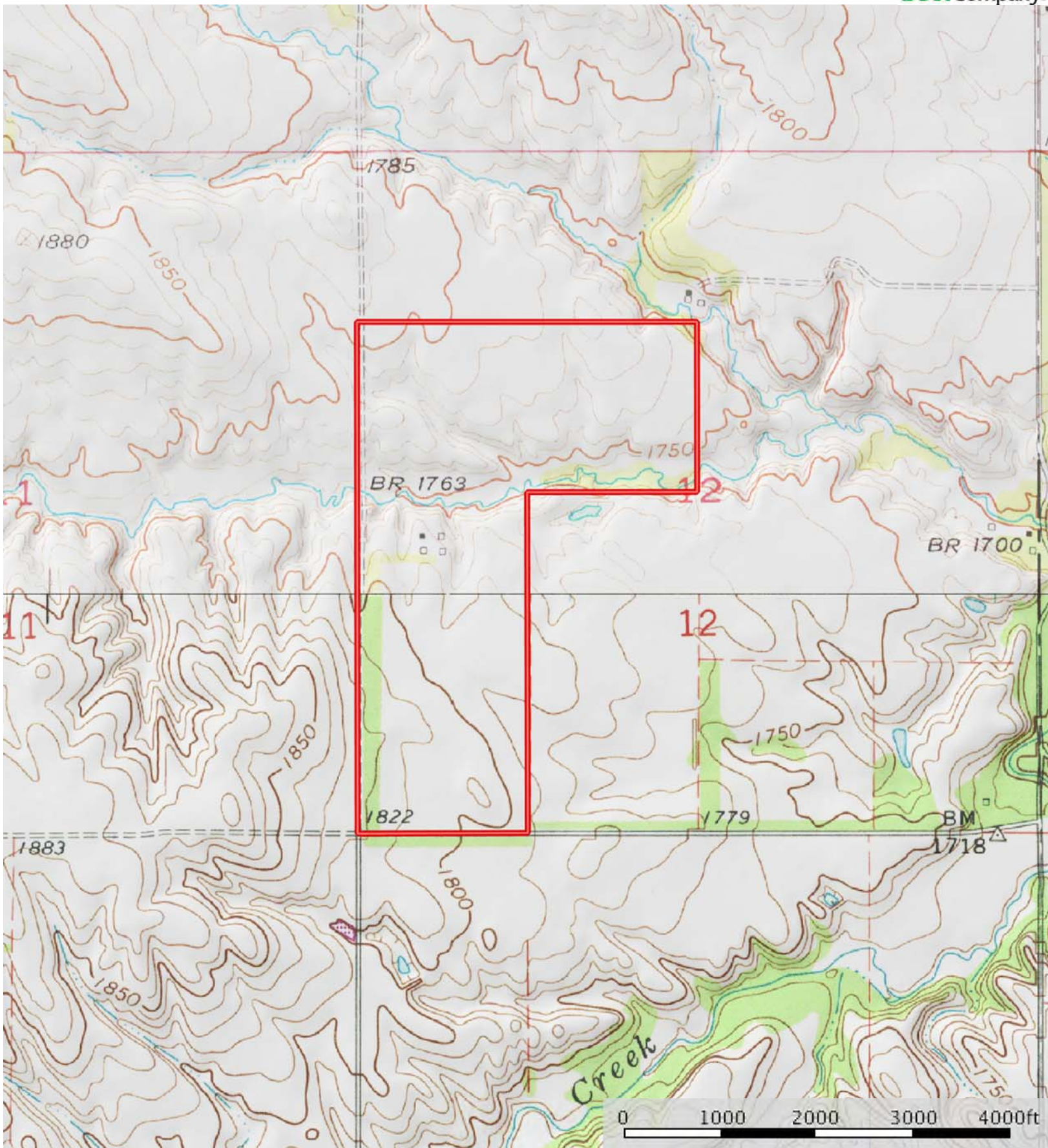
Decreased Adaptability and Freedom of Choice Users




### Grazing Cultivation

(c) climatic limitations (e) susceptibility to erosion

(s) soil limitations within the rooting zone (w) excess of water



 Boundary