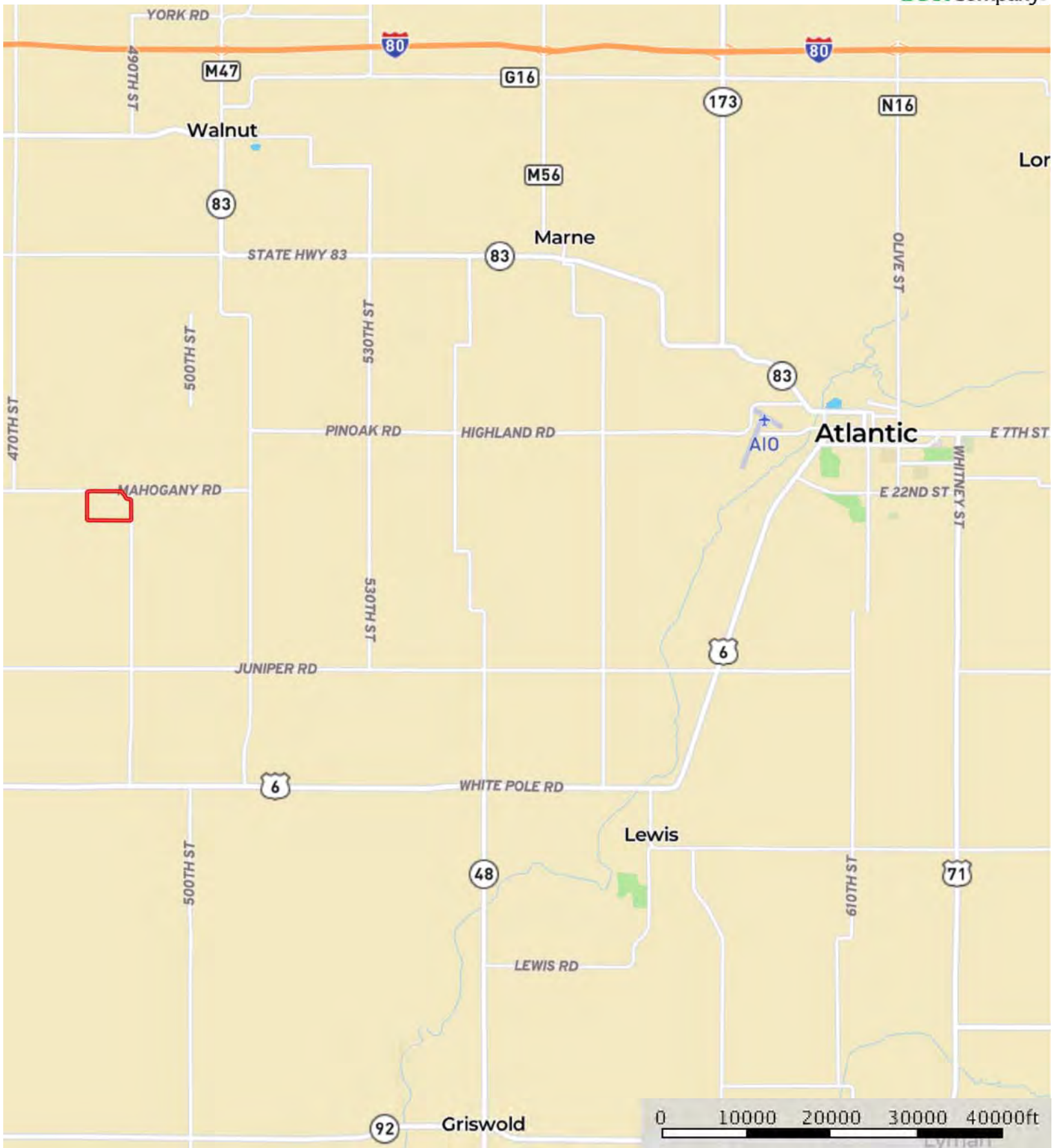


L-1900462

Pottawattamie County, Iowa, 232 AC +/-



Boundary

L-1900462


Pottawattamie County, Iowa, 232 AC +/-



Google

Map data ©2019 Google

0 500 1000 1500 2000ft

 Boundary

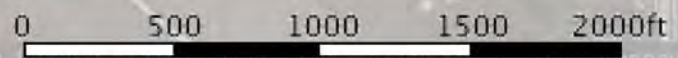


The information contained herein was obtained from sources deemed to be reliable. MapRight Services makes no warranties or guarantees as to the completeness or accuracy thereof.



Google

Map data ©2019 Google



Boundary



The information contained herein was obtained from sources deemed to be reliable. MapRight Services makes no warranties or guarantees as to the completeness or accuracy thereof.

|  Boundary 222.8 ac

SOIL CODE	SOIL DESCRIPTION	ACRES	%	CSR2	CAP
8B	Judson silty clay loam, deep loess, 2 to 5 percent slopes	7.0	3.16	92	2e
9D2	Marshall silty clay loam, 9 to 14 percent slopes, eroded	17.0	7.63	61	3e
9C2	Marshall silty clay loam, 5 to 9 percent slopes, eroded	9.2	4.14	87	3e
99C2	Exira silty clay loam, 5 to 9 percent slopes, eroded	7.7	3.45	87	3e
99D2	Exira silty clay loam, 9 to 14 percent slopes, eroded	57.3	25.71	59	3e
9C	Marshall silty clay loam, 5 to 9 percent slopes	1.8	0.82	89	3e
9B	Marshall silty clay loam, 2 to 5 percent slopes	28.4	12.75	95	2e
11B	Ackmore-Colo-Judson complex, 0 to 5 percent slopes	73.0	32.76	81	2w
Z93D2	Shelby-Adair clay loams, deep loess, 9 to 14 percent slopes, eroded	7.2	3.24	38	3e
1C3	Ida silt loam, 5 to 9 percent slopes, severely eroded	1.8	0.83	58	3e
Z192D2	Adair clay loam, deep loess, 9 to 14 percent slopes, eroded	11.5	5.14	14	4e
8C	Judson silty clay loam, deep loess, 5 to 9 percent slopes	0.8	0.38	87	3e
TOTALS		222.8	100%	71.46	2.56

## Capability Legend

Increased Limitations and Hazards

Decreased Adaptability and Freedom of Choice Users

Land, Capability Class(non-irrigated)	1	2	3	4	5	6	7	8
'Wild Life'	•	•	•	•	•	•	•	•
Forestry	•	•	•	•	•	•	•	
Limited	•	•	•	•	•	•	•	
Moderate	•	•	•	•	•	•		
Intense	•	•	•	•	•			
Limited	•	•	•	•				
Moderate	•	•	•					
Intense	•	•						
Very Intense	•							

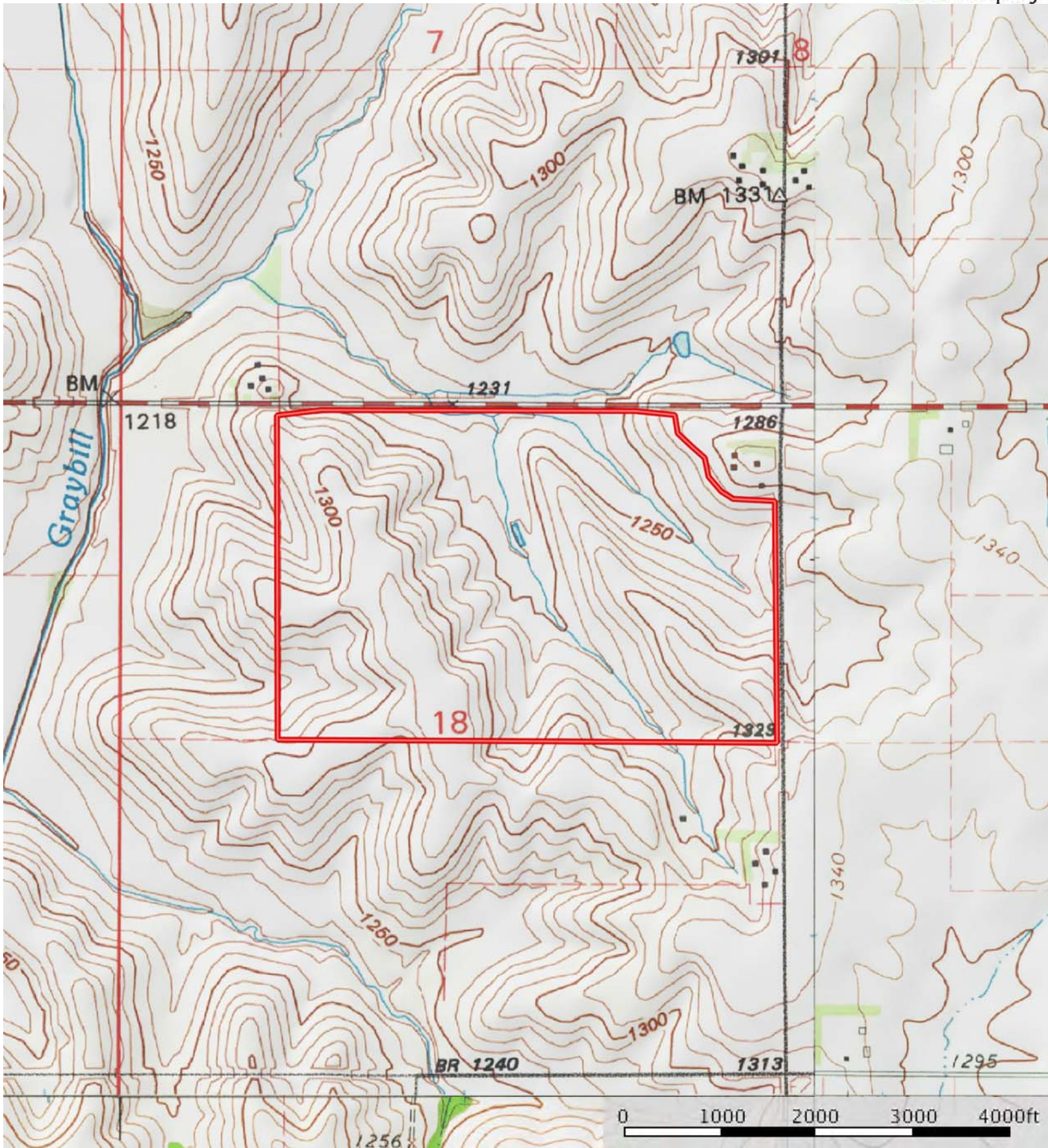
### Grazing Cultivation

(c) climatic limitations (e) susceptibility to erosion

(s) soil limitations within the rooting zone (w) excess of water

L-1900462

Pottawattamie County, Iowa, 232 AC +/-



Boundary