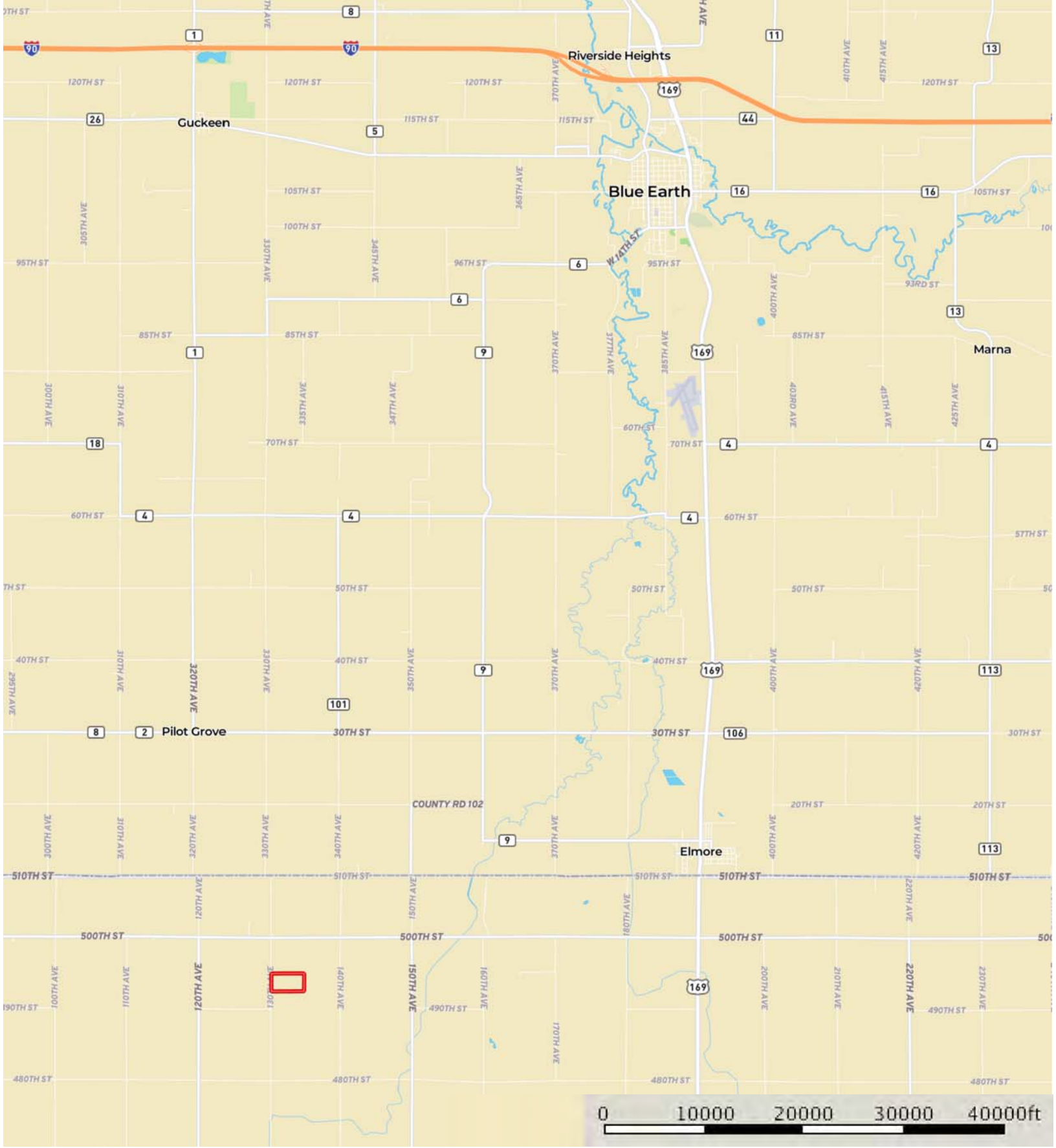


L-1900487

Kossuth County, Iowa, 72 AC +/-





Boundary



 Boundary



 Boundary

|  Boundary 72.0 ac

SOIL CODE	SOIL DESCRIPTION	ACRES	%	CSR2	CAP
221	Klossner muck, 0 to 1 percent slopes	4.1	5.74	32	3w
138B	Clarion loam, 2 to 6 percent slopes	3.1	4.31	89	2e
138C2	Clarion loam, 6 to 10 percent slopes, moderately eroded	1.2	1.6	83	3e
354	Aquolls, ponded	1.0	1.35	5	8w
507	Canisteo clay loam, 0 to 2 percent slopes	15.6	21.72	84	2w
639C2	Storden-Salida complex, 5 to 9 percent slopes, moderately erode	7.3	10.13	49	3e
638B	Clarion-Swanlake complex, 2 to 6 percent slopes	1.2	1.71	85	2e
6	Okoboji silty clay loam, 0 to 1 percent slopes	10.8	14.94	59	3w
95	Harps clay loam, 0 to 2 percent slopes	13.7	19.07	72	2w
90	Okoboji mucky silt loam, 0 to 1 percent slopes	0.2	0.25	56	3w
62C2	Storden loam, 6 to 10 percent slopes, moderately eroded	0.8	1.15	64	3e
639D2	Storden-Salida complex, 9 to 14 percent slopes, moderately eroded	1.3	1.81	28	4e
655	Crippin loam, 1 to 3 percent slopes	4.4	6.09	91	1
55	Nicollet clay loam, 1 to 3 percent slopes	7.3	10.14	89	1
TOTALS		72.0	100%	70.22	2.29

Capability Legend

Increased Limitations and Hazards

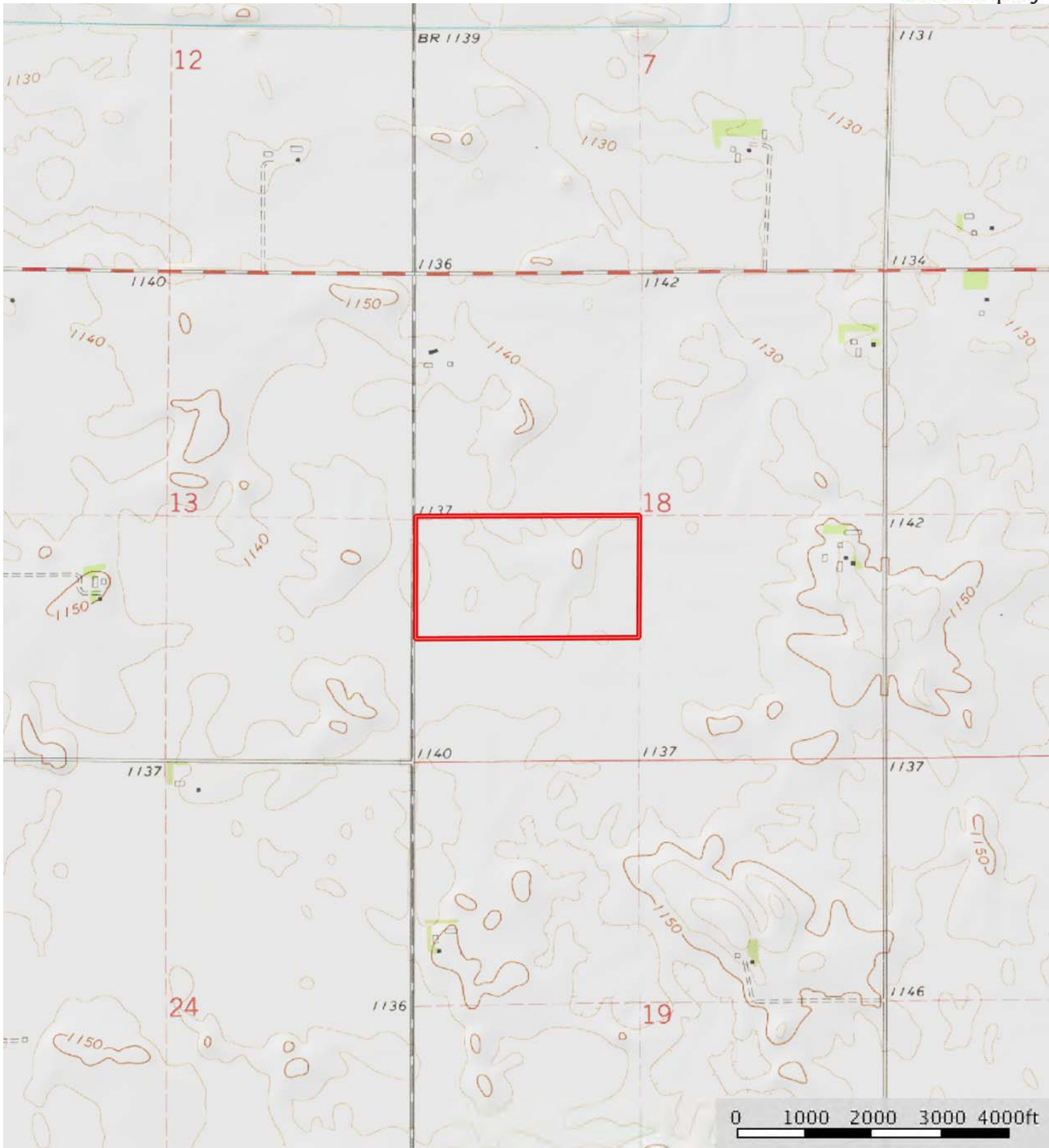
Decreased Adaptability and Freedom of Choice Users

Land, Capability Class(non-irrigated)	1	2	3	4	5	6	7	8
'Wild Life'	•	•	•	•	•	•	•	•
Forestry	•	•	•	•	•	•	•	
Limited	•	•	•	•	•	•	•	
Moderate	•	•	•	•	•	•		
Intense	•	•	•	•	•			
Limited	•	•	•	•				
Moderate	•	•	•					
Intense	•	•						
Very Intense	•							

Grazing Cultivation

(c) climatic limitations (e) susceptibility to erosion

(s) soil limitations within the rooting zone (w) excess of water



 Boundary