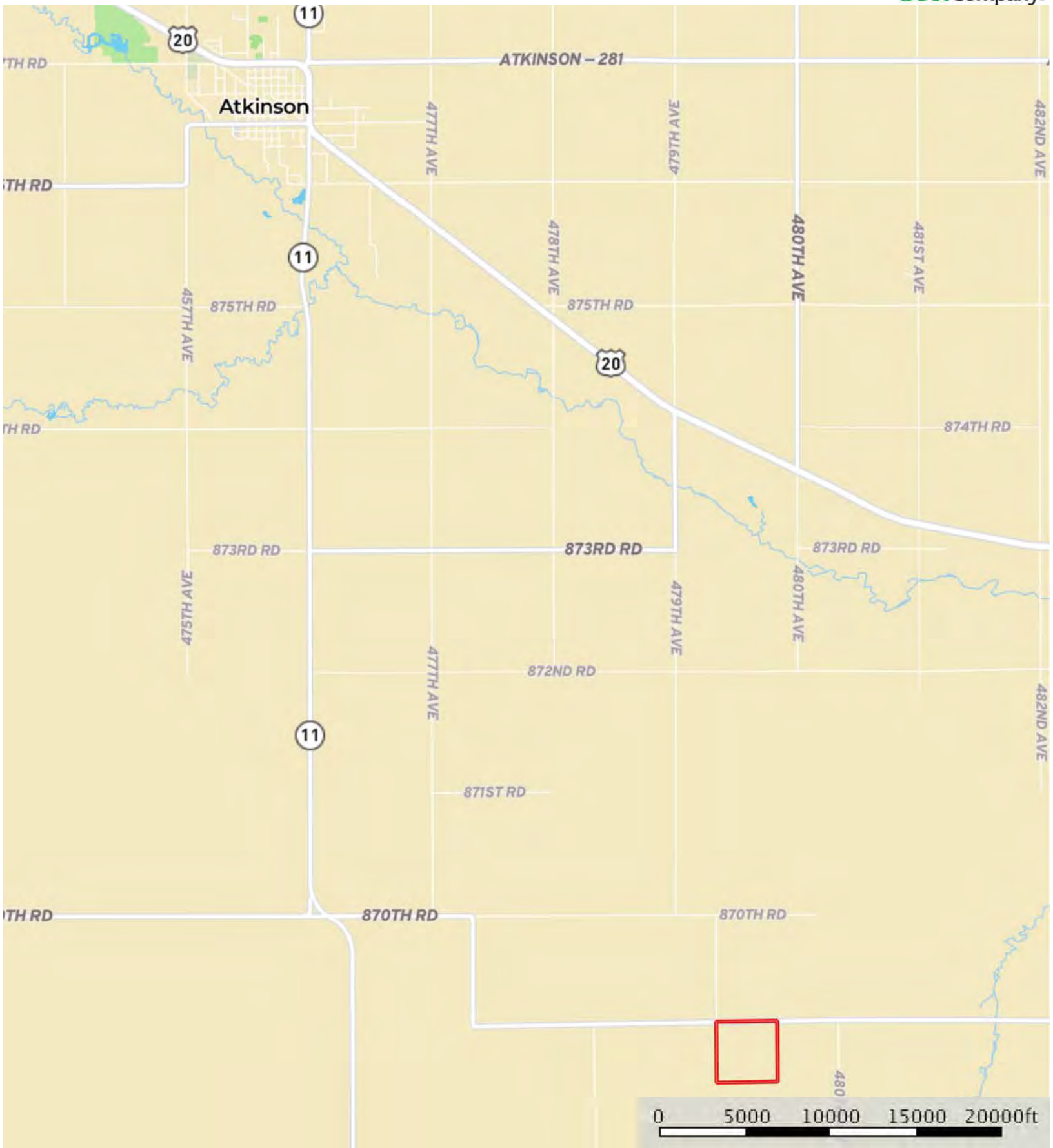


L-1900502

Holt County, Nebraska, 160 AC +/-



Boundary

L-1900502

Holt County, Nebraska, 160 AC +/-



 Boundary



The information contained herein was obtained from sources deemed to be reliable. MapRight Services makes no warranties or guarantees as to the completeness or accuracy thereof.



 Boundary









|  Boundary 160.9 ac

SOIL CODE	SOIL DESCRIPTION	ACRES	%	CAP
4641	lpage fine sand, 0 to 3 percent slopes	10.2	6.32	6e
4542	Els-lpage complex, 0 to 3 percent slopes	39.0	24.24	6w
4533	Els loamy sand, 0 to 3 percent slopes	34.2	21.28	4w
4370	Libory loamy fine sand, 0 to 3 percent slopes	77.5	48.15	3e
TOTALS		160.9	100%	4.13

Capability Legend

Increased Limitations and Hazards

Decreased Adaptability and Freedom of Choice Users

Land, Capability Class(non-irrigated)								
	1	2	3	4	5	6	7	8
'Wild Life'	•	•	•	•	•	•	•	•
Forestry	•	•	•	•	•	•	•	
Limited	•	•	•	•	•	•	•	
Moderate	•	•	•	•	•	•		
Intense	•	•	•	•	•			
Limited	•	•	•	•				
Moderate	•	•	•					
Intense	•	•						
Very Intense	•							

Grazing Cultivation

(c) climatic limitations (e) susceptibility to erosion

(s) soil limitations within the rooting zone (w) excess of water

