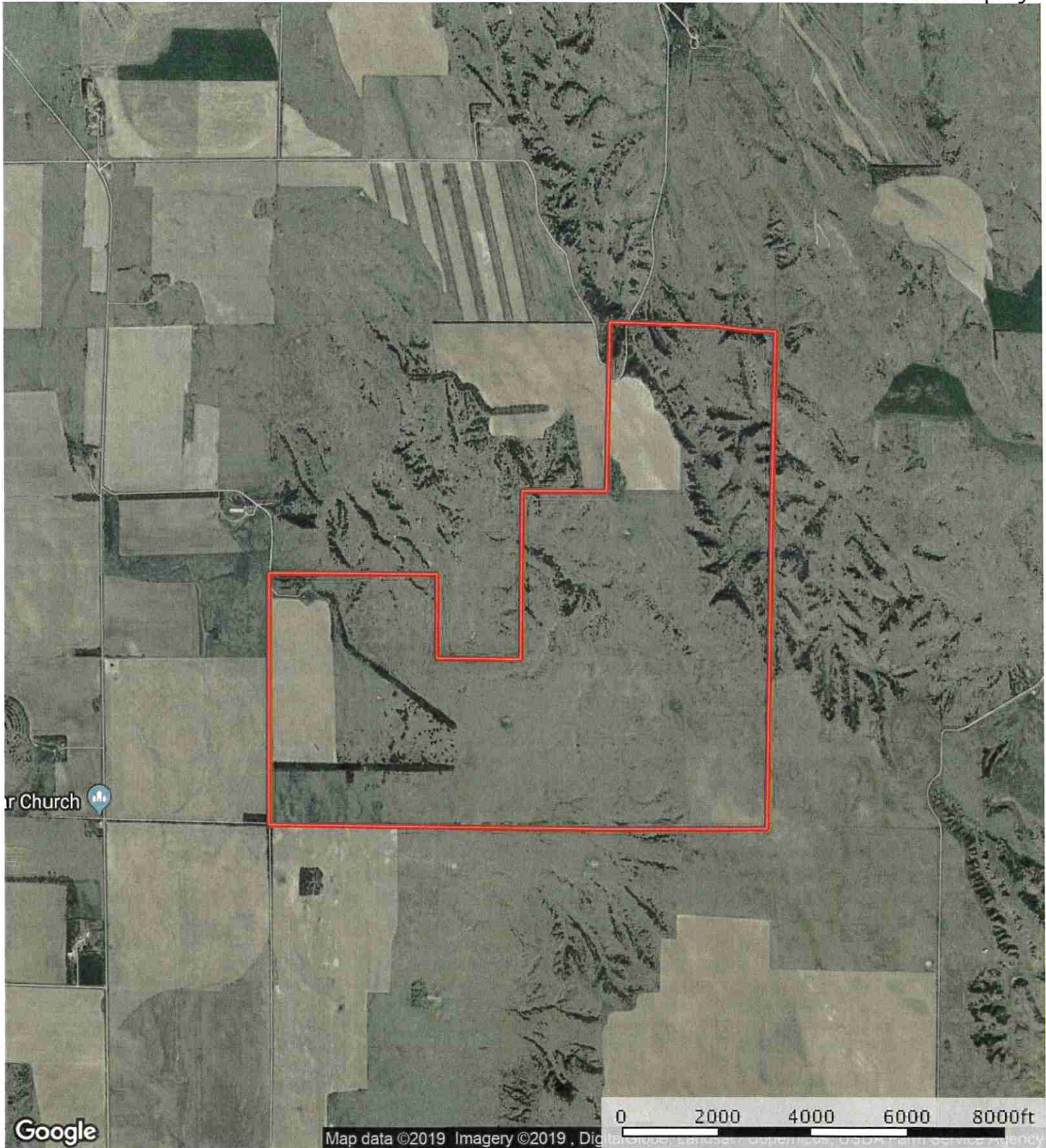



L-1900514

Custer County, Nebraska, 964 AC +/-

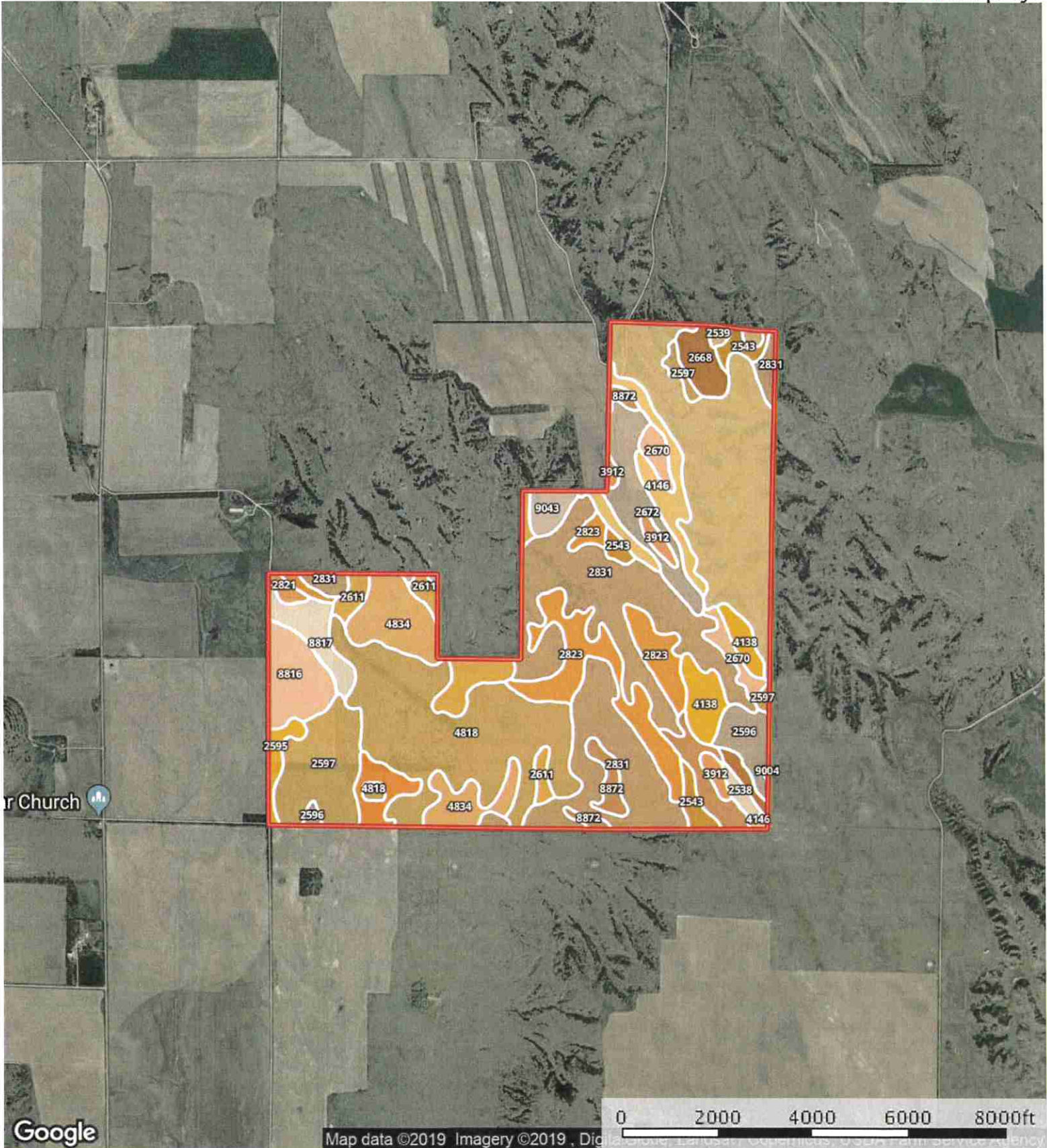


 Boundary

 The information contained herein was obtained from sources deemed to be reliable. MapRight Services makes no warranties or guarantees as to the completeness or accuracy thereof.

L-1900514

Custer County, Nebraska, 964 AC +/-

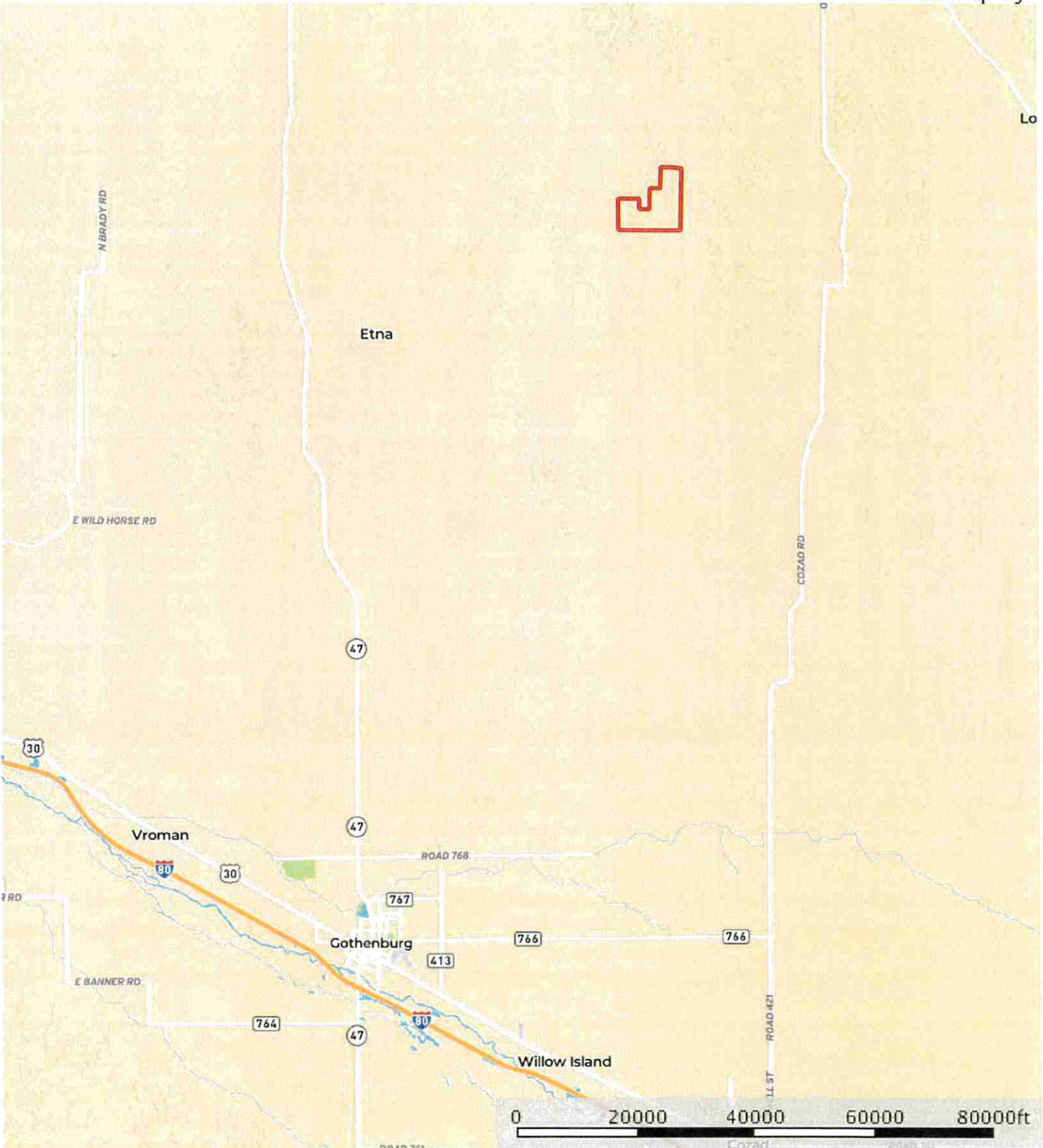


Boundary

The information contained herein was obtained from sources deemed to be reliable. MapRight Services makes no warranties or guarantees as to the completeness or accuracy thereof.

L-1900514

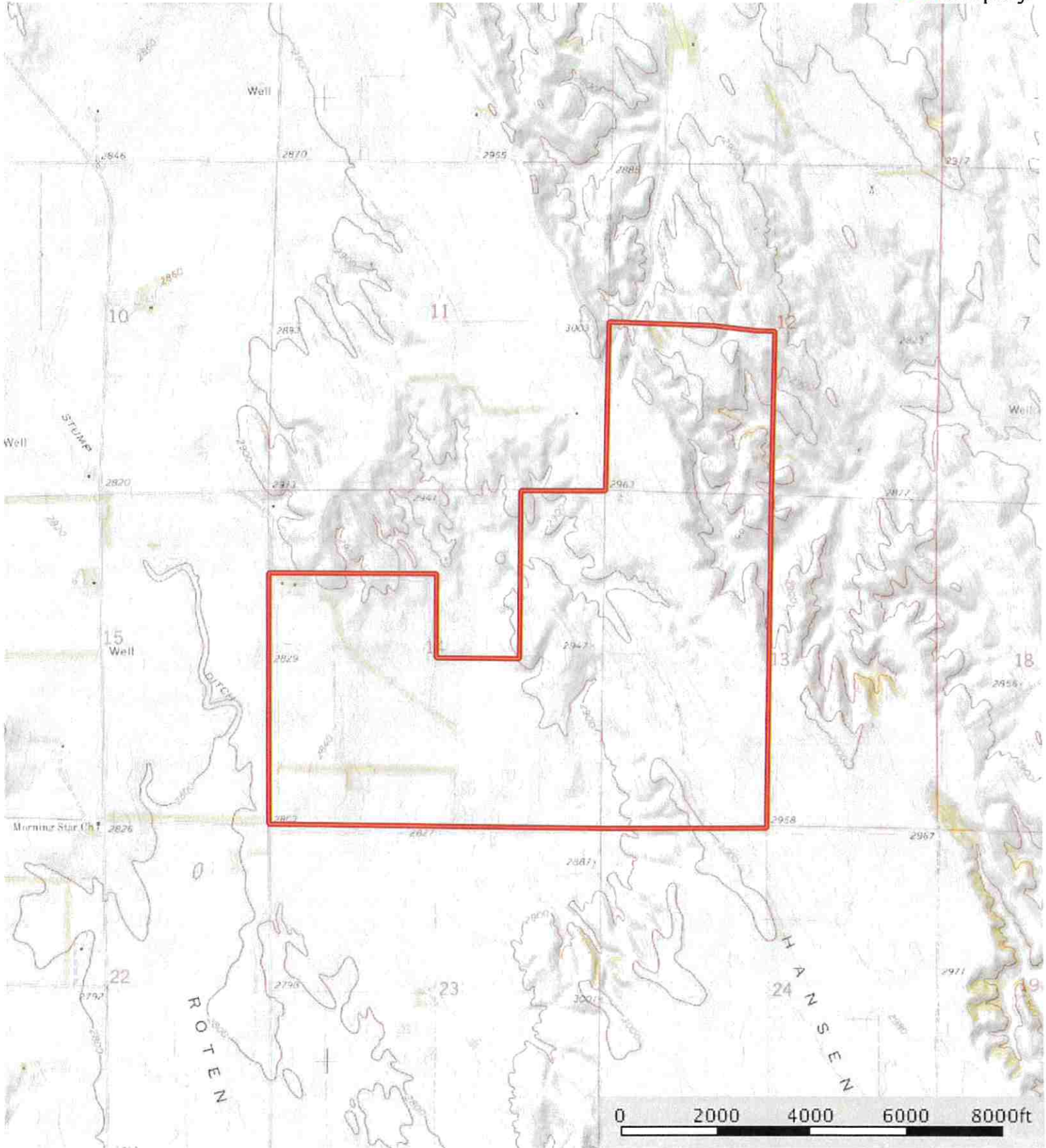
Custer County, Nebraska, 964 AC +/-




Boundary

L-1900514

Custer County, Nebraska, 964 AC +/-



 Boundary

|  Boundary 964.3 ac

SOIL CODE	SOIL DESCRIPTION	ACRES	%	CAP
2597	Hersh fine sandy loam, 6 to 11 percent slopes	53.6	5.56	4e
2538	Coly silt loam, 6 to 11 percent slopes, eroded	4.4	0.45	4e
4138	Holdrege silt loam, 7 to 11 percent slopes	23.9	2.48	4e
9004	Anselmo fine sandy loam, 3 to 6 percent slopes	5.3	0.55	2e
2596	Hersh fine sandy loam, 3 to 6 percent slopes	19.2	1.99	3e
2670	Holdrege silt loam, 3 to 7 percent slopes	15.1	1.57	3e
3912	Scott silty clay loam, frequently ponded	9.7	1.0	4w
4146	Holdrege silty clay loam, 7 to 11 percent slopes, eroded	31.7	3.29	3e
2543	Coly silt loam, 11 to 17 percent slopes, eroded, cool	16.1	1.67	6e
8872	Hord silt loam, 3 to 6 percent slopes	29.2	3.02	3e
2823	Uly silt loam, 11 to 17 percent slopes, eroded	68.0	7.05	6e
2611	Hersh-Valentine complex, 11 to 30 percent slopes	30.7	3.18	6e
2831	Uly-Coly silt loams, 17 to 30 percent slopes, eroded	186.5	19.34	6e
9043	Gates-Hersh complex, 20 to 60 percent slopes	10.4	1.07	7e
2539	Coly-Hobbs silt loams, 3 to 60 percent slopes	149.4	15.49	7e
4834	Valentine loamy fine sand, rolling, 9 to 24 percent slopes	48.1	4.99	6e
4818	Valentine loamy fine sand, 3 to 9 percent slopes	142.4	14.77	6e
9015	Anselmo very fine sandy loam, 1 to 3 percent slopes	13.4	1.39	2e
8817	Cozad silt loam, 3 to 6 percent slopes	18.8	1.95	2c
2595	Hersh fine sandy loam, 0 to 3 percent slopes	7.7	0.8	3e
2668	Holdrege silt loam, 1 to 3 percent slopes	14.3	1.48	2e
2672	Holdrege silty clay loam, 3 to 7 percent slopes, eroded	33.8	3.51	3e
8816	Cozad silt loam, 1 to 3 percent slopes	28.9	3.0	2e
2821	Uly silt loam, 6 to 11 percent slopes, eroded	3.7	0.38	4e
TOTALS		964.3	100%	5.21

Capability Legend

Increased Limitations and Hazards

Decreased Adaptability and Freedom of Choice Users

Land, Capability Class(non-irrigated)	1	2	3	4	5	6	7	8
'Wild Life'	•	•	•	•	•	•	•	•
Forestry	•	•	•	•	•	•	•	
Limited	•	•	•	•	•	•	•	
Moderate	•	•	•	•	•	•		
Intense	•	•	•	•	•			
Limited	•	•	•	•				
Moderate	•	•	•					
Intense	•	•						
Very Intense	•							

Grazing Cultivation

(c) climatic limitations (e) susceptibility to erosion

(s) soil limitations within the rooting zone (w) excess of water