


Map data ©2019 Imagery ©2019, Landsat / Copernicus, Maxar Technologies, GeoEye, Farm Service Agency

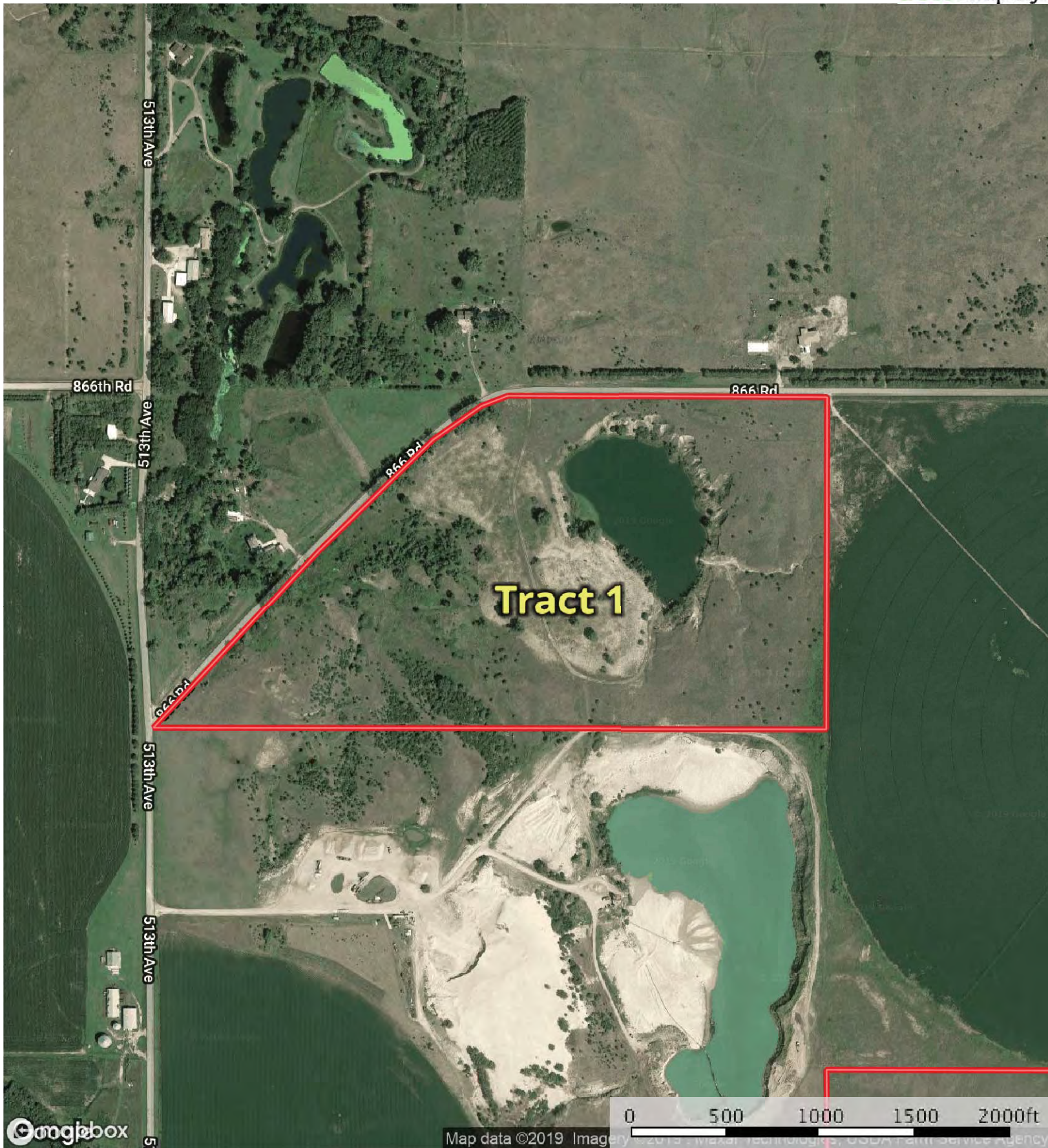
 Boundary



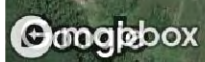
The information contained herein was obtained from sources deemed to be reliable. MapRight Services makes no warranties or guarantees as to the completeness or accuracy thereof.

L-1900605

Antelope County, Nebraska, 279.7 AC +/-




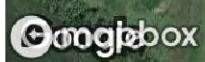
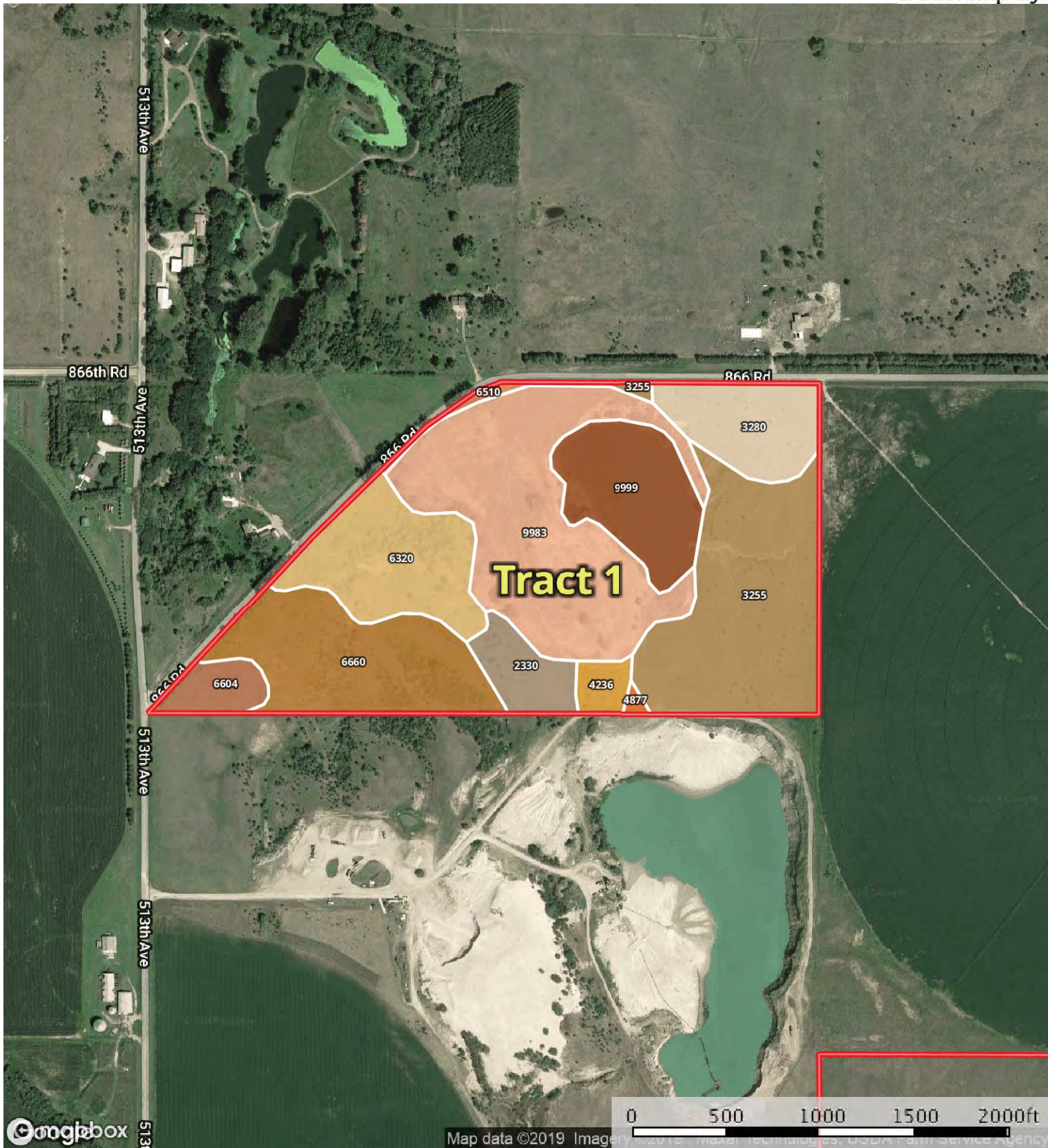
**Tract 1**



Map data ©2019 Imagery ©2019 Maxar Technology, USDA Farm Service Agency

 Boundary

 The information contained herein was obtained from sources deemed to be reliable. MapRight Services makes no warranties or guarantees as to the completeness or accuracy thereof.



Map data ©2019 Imagery ©2019 Maxar Technologies, USDA Farm Service Agency

Boundary



The information contained herein was obtained from sources deemed to be reliable. MapRight Services makes no warranties or guarantees as to the completeness or accuracy thereof.

Boundary 60.8 ac

SOIL CODE	SOIL DESCRIPTION	ACRES	%	CAP
3255	Meadin sandy loam, 2 to 30 percent slopes	12.8	21.09	6s
4877	Valentine-Simeon complex, moist, 0 to 9 percent slopes	0.2	0.29	6e
3280	Paka complex, 0 to 2 percent slopes	4.5	7.35	3e
4236	Calamus-Boel complex, channeled, rarely flooded	1.0	1.64	6e
9999	Water	6.0	9.8	-
2330	Inavale fine sand, 0 to 3 percent slopes, rarely flooded	2.4	3.88	6w
9983	Gravel pit	15.9	26.19	8s
6510	Blendon fine sandy loam, 2 to 6 percent slopes	0.4	0.64	3e
6320	Barney-Boel-Calamus complex, channeled	7.0	11.45	6w
6660	Brunswick-Paka complex, 11 to 30 percent slopes	9.0	14.88	6e
6604	Bazile complex, 0 to 3 percent slopes	1.7	2.79	3e
TOTALS		60.8	100%	5.61

### Capability Legend

Increased Limitations and Hazards

Decreased Adaptability and Freedom of Choice Users

Land, Capability Class(non-irrigated)



'Wild Life'



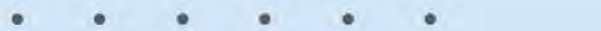
Forestry



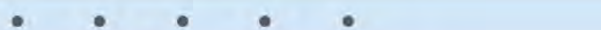
Limited



Moderate



Intense



Limited



Moderate



Intense



Very Intense



### Grazing Cultivation

(c) climatic limitations (e) susceptibility to erosion

(s) soil limitations within the rooting zone (w) excess of water

L-1900605


Antelope County, Nebraska, 279.7 AC +/-

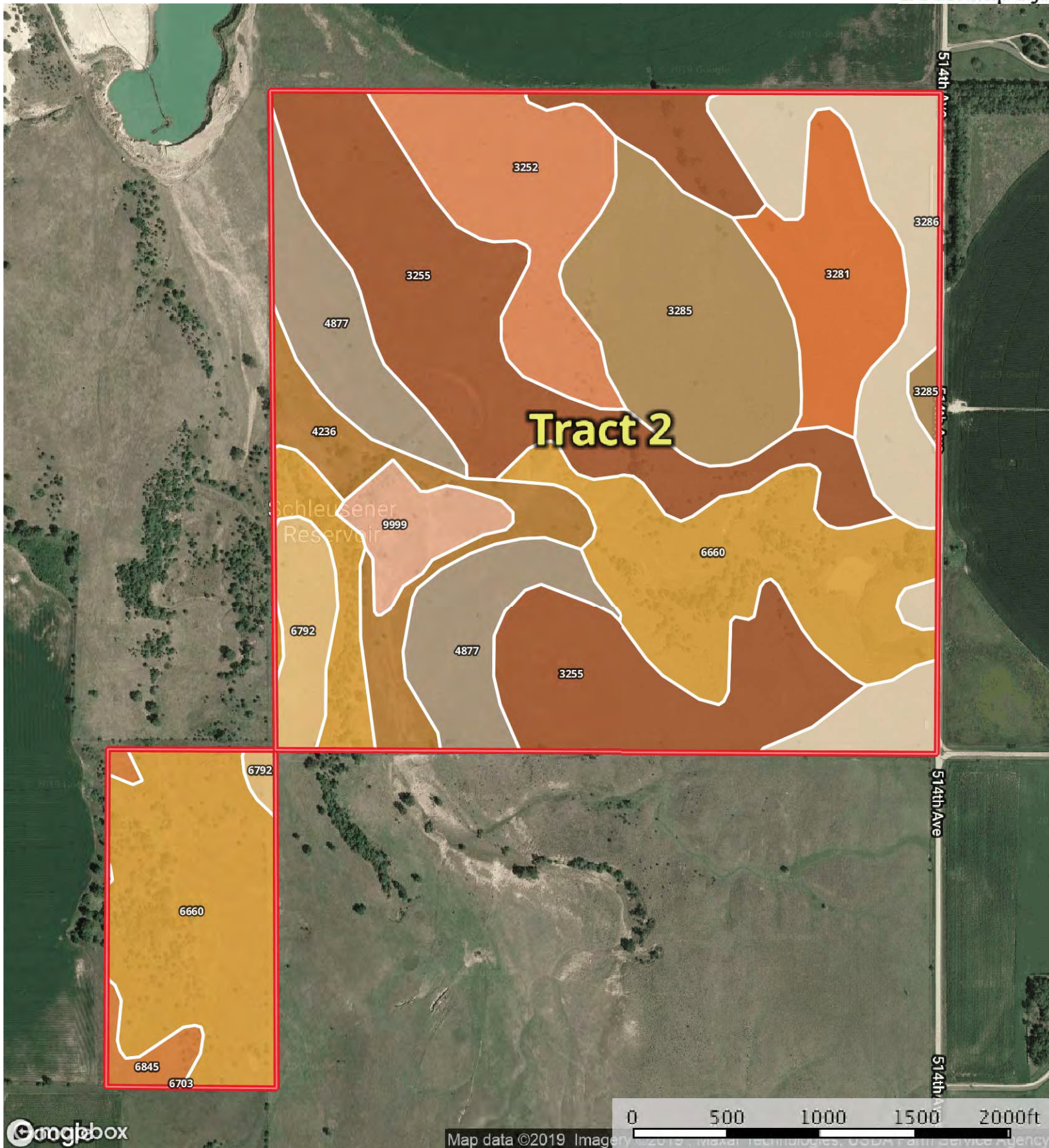


0 500 1000 1500 2000ft

Map data ©2019 Imagery ©2019 Maxar Technologies, USDA Farm Service Agency

 Boundary

 The information contained herein was obtained from sources deemed to be reliable. MapRight Services makes no warranties or guarantees as to the completeness or accuracy thereof.



**Tract 2**

Schleusener Reservoir

514th Ave  
514th Ave  
514th Ave



Map data ©2019 Imagery ©2019 Maxar Technologies, USDA Farm Service Agency

Boundary

|  All Polygons 177.2 ac

SOIL CODE	SOIL DESCRIPTION	ACRES	%	CAP
3285	Paka loam, 0 to 2 percent slopes	18.0	10.17	1
3281	Paka complex, 2 to 6 percent slopes	10.0	5.66	3e
3286	Paka loam, 2 to 6 percent slopes	16.2	9.15	2e
6660	Brunswick-Paka complex, 11 to 30 percent slopes	41.2	23.27	6e
3255	Meadin sandy loam, 2 to 30 percent slopes	42.7	24.1	6s
4877	Valentine-Simeon complex, moist, 0 to 9 percent slopes	15.3	8.62	6e
9999	Water	4.3	2.43	-
3252	Meadin sandy loam, 0 to 2 percent slopes	13.7	7.71	4s
6792	Loretto loam, 2 to 6 percent slopes	4.8	2.73	2e
4236	Calamus-Boel complex, channeled, rarely flooded	8.9	5.03	6e
6703	Thurman loamy fine sand, 2 to 6 percent slopes	0.0	0.0	4e
6845	Ortello fine sandy loam, 2 to 6 percent slopes	2.0	1.12	3e
TOTALS		177.2	100%	4.51

|  Boundary 156.8 ac

SOIL CODE	SOIL DESCRIPTION	ACRES	%	CAP
3285	Paka loam, 0 to 2 percent slopes	18.0	11.49	1
3281	Paka complex, 2 to 6 percent slopes	10.0	6.4	3e
3286	Paka loam, 2 to 6 percent slopes	16.2	10.34	2e
6660	Brunswick-Paka complex, 11 to 30 percent slopes	23.5	14.96	6e
3255	Meadin sandy loam, 2 to 30 percent slopes	42.7	27.23	6s
4877	Valentine-Simeon complex, moist, 0 to 9 percent slopes	15.3	9.74	6e
9999	Water	4.3	2.74	-
3252	Meadin sandy loam, 0 to 2 percent slopes	13.7	8.71	4s
6792	Loretto loam, 2 to 6 percent slopes	4.3	2.72	2e
4236	Calamus-Boel complex, channeled, rarely flooded	8.9	5.68	6e
TOTALS		156.8	100%	4.37

|  Boundary 20.3 ac

SOIL CODE	SOIL DESCRIPTION	ACRES	%	CAP
6792	Loretto loam, 2 to 6 percent slopes	0.6	2.82	2e
6703	Thurman loamy fine sand, 2 to 6 percent slopes	0.0	0.04	4e
6845	Ortello fine sandy loam, 2 to 6 percent slopes	2.0	9.75	3e

6660	Brunswick-Paka complex, 11 to 30 percent slopes	17.8	87.39	6e
TOTALS		20.3	100%	5.59

## Capability Legend

Increased Limitations and Hazards

Decreased Adaptability and Freedom of Choice Users

Land, Capability  
Class(non-irrigated)

	1	2	3	4	5	6	7	8
'Wild Life'	•	•	•	•	•	•	•	•
Forestry	•	•	•	•	•	•	•	
Limited	•	•	•	•	•	•	•	
Moderate	•	•	•	•	•	•		
Intense	•	•	•	•	•			
Limited	•	•	•	•				
Moderate	•	•	•					
Intense	•	•						
Very Intense	•							

## Grazing Cultivation

(c) climatic limitations (e) susceptibility to erosion

(s) soil limitations within the rooting zone (w) excess of water




L-1900605

Antelope County, Nebraska, 279.7 AC +/-

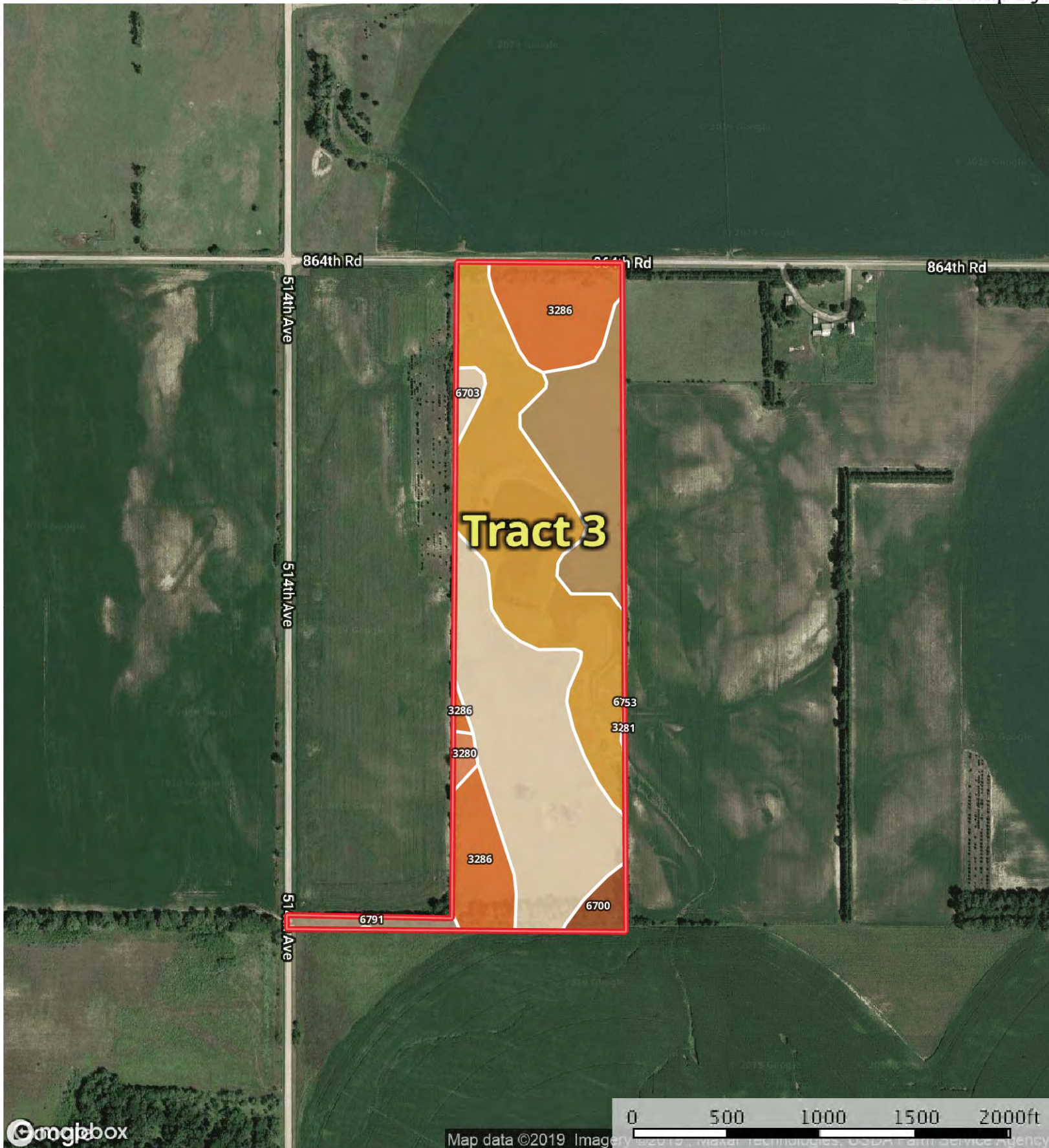



Map data ©2019 Imagery ©2019 Maxar Technologies, USDA Farm Service Agency

 Boundary



The information contained herein was obtained from sources deemed to be reliable. MapRight Services makes no warranties or guarantees as to the completeness or accuracy thereof.



 Boundary

Boundary 41.4 ac

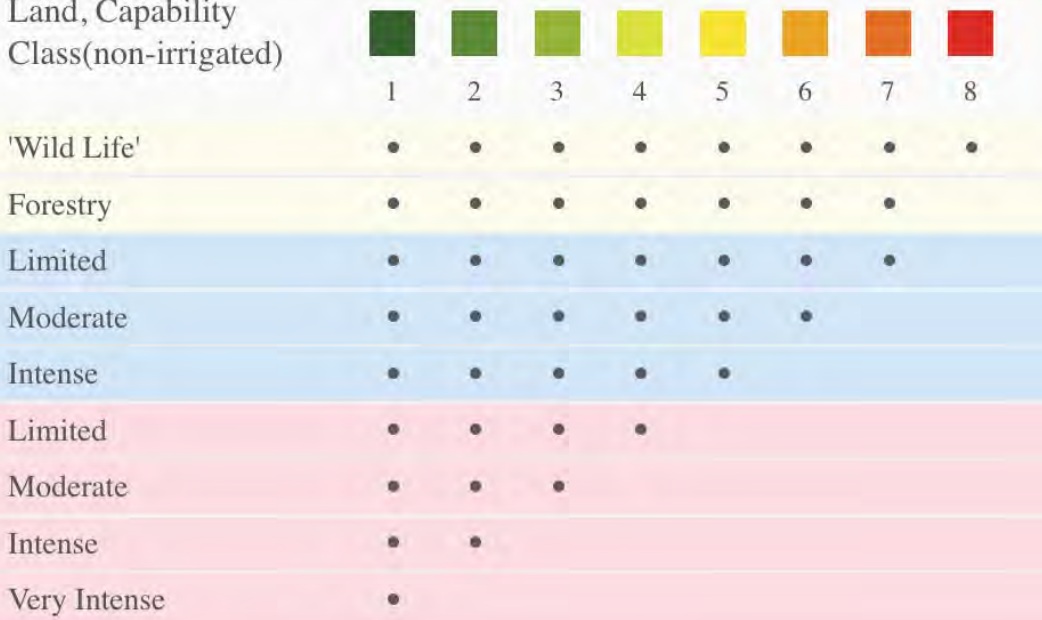
SOIL CODE	SOIL DESCRIPTION	ACRES	%	CAP
6753	Nora silt loam, 2 to 6 percent slopes	6.2	14.91	2e
3286	Paka loam, 2 to 6 percent slopes	7.0	17.0	2e
6703	Thurman loamy fine sand, 2 to 6 percent slopes	12.6	30.45	4e
6660	Brunswick-Paka complex, 11 to 30 percent slopes	13.4	32.44	6e
6700	Thurman loamy fine sand, 0 to 2 percent slopes	0.9	2.24	3e
6791	Loretto loam, 0 to 2 percent slopes	0.8	1.91	1
3281	Paka complex, 2 to 6 percent slopes	0.0	0.11	3e
3280	Paka complex, 0 to 2 percent slopes	0.4	0.93	3e
TOTALS		41.4	100%	3.92

### Capability Legend

Increased Limitations and Hazards

Decreased Adaptability and Freedom of Choice Users

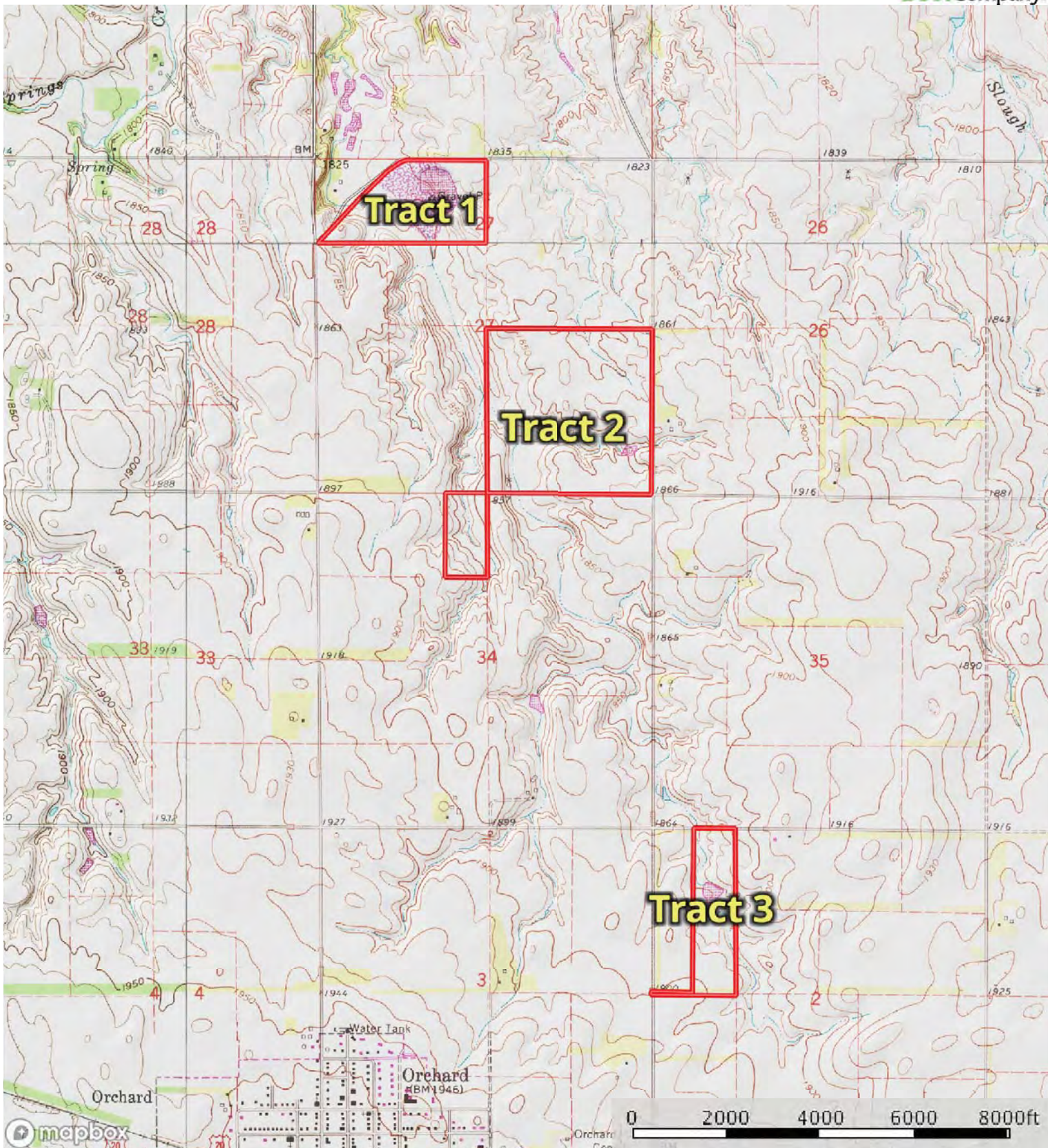
Land, Capability Class(non-irrigated)




### Grazing Cultivation

(c) climatic limitations (e) susceptibility to erosion

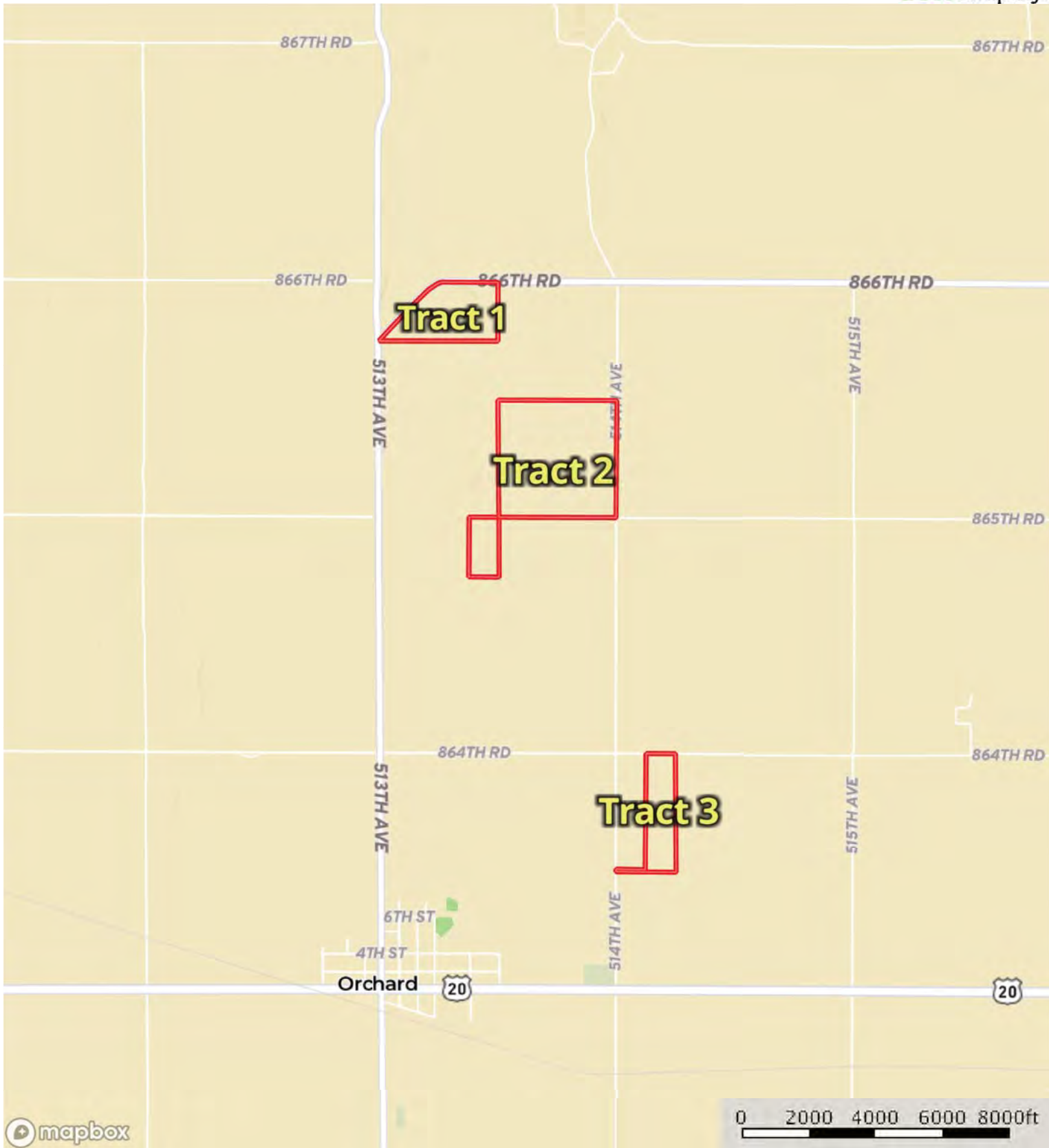
(s) soil limitations within the rooting zone (w) excess of water




 Boundary

L-1900605

Antelope County, Nebraska, 279.7 AC +/-



 Boundary