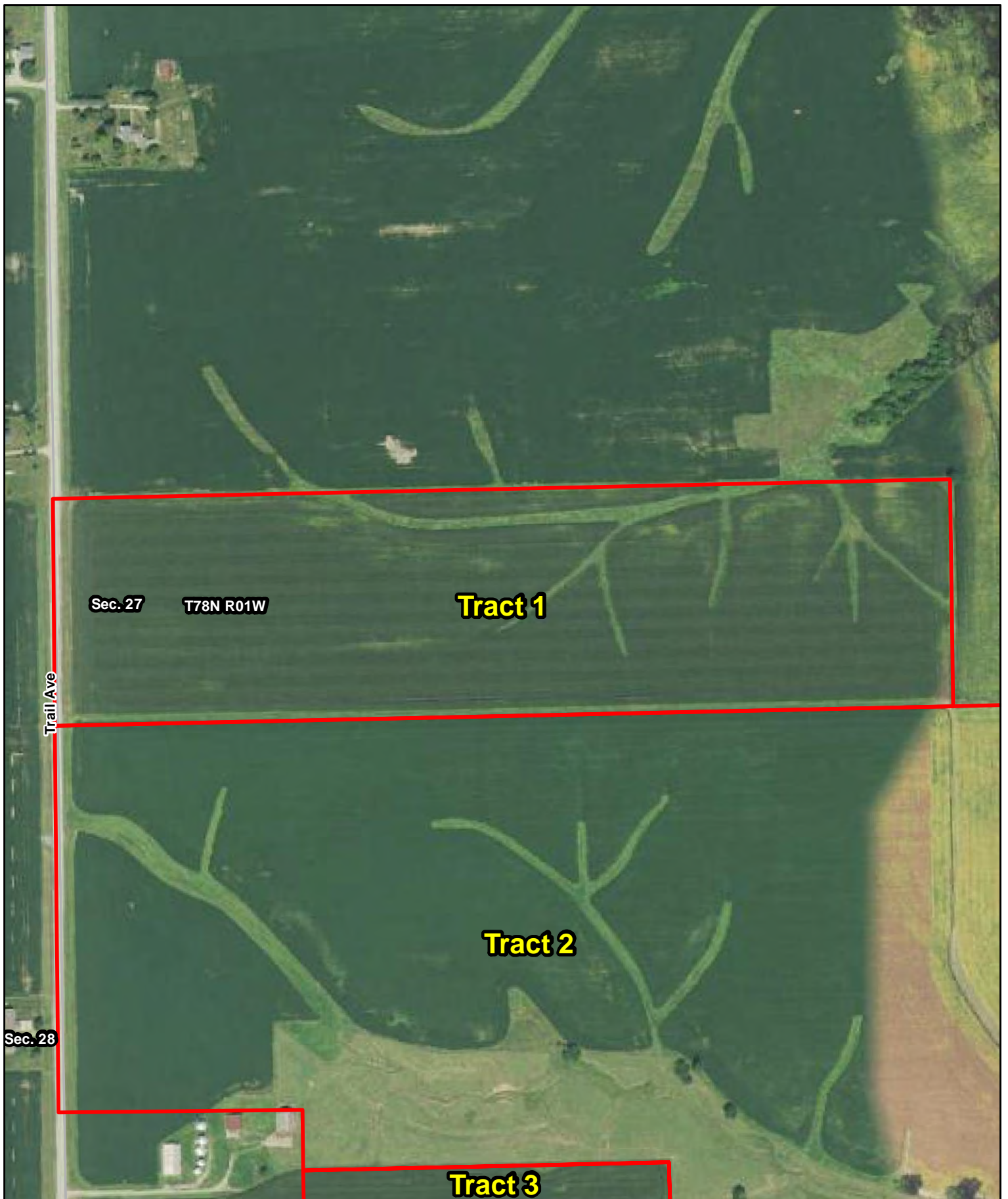


L-1900623
Muscatine Co., IA

Latitude: 41.5233°N
Longitude: -90.9561°W
Imagery Source: USDA NAIP
Soil Data Source: USDA NRCS
Boundaries Are Approximate



Sec. 27

T78N R01W

Tract 1

Trail Ave

Tract 2

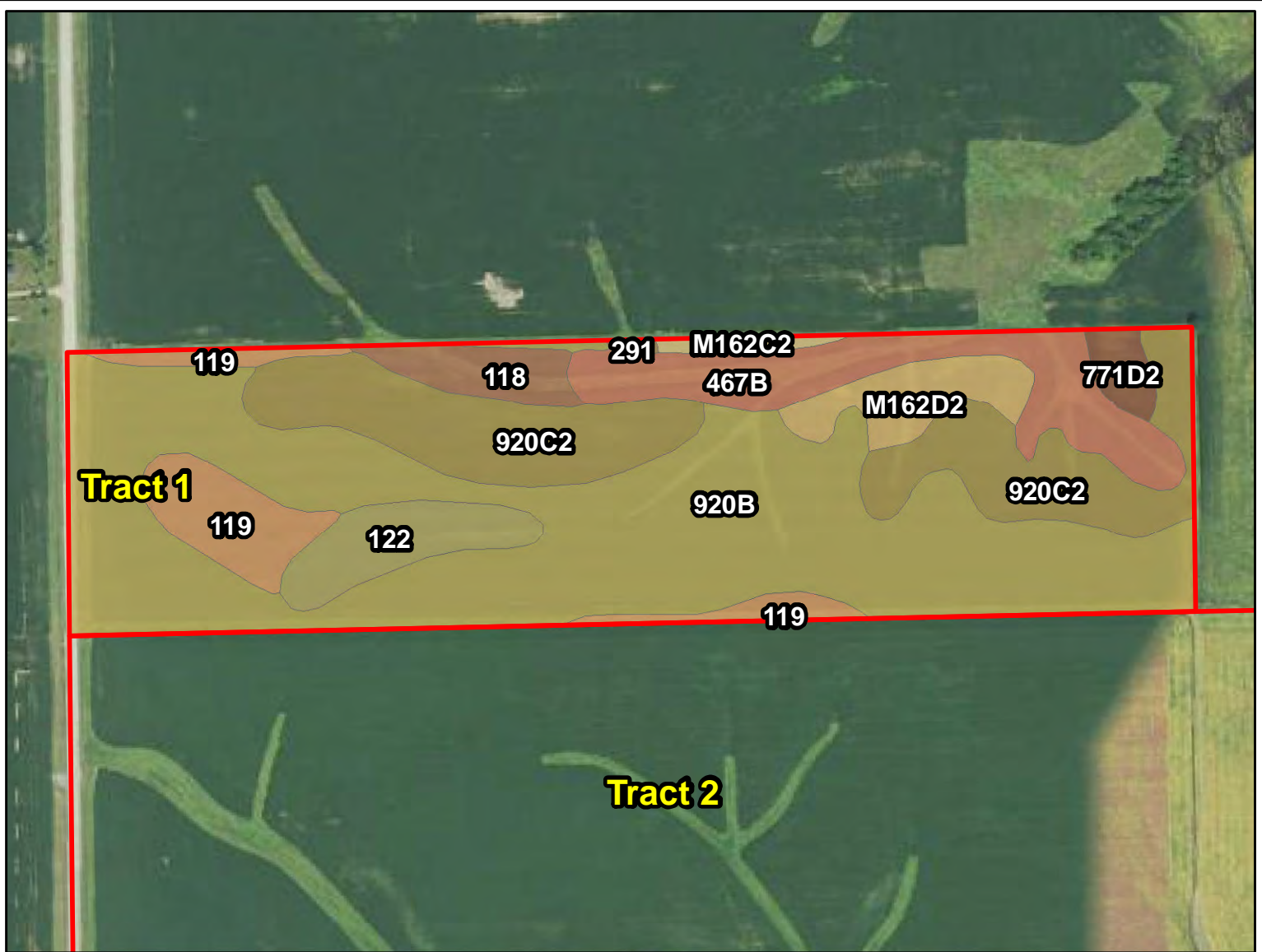
Sec. 28

Tract 3



**L-1900623
Muscatine Co., IA**

Latitude: 41.5306°N
Longitude: -90.9536°W
Imagery Source: USDA NAIP
Soil Data Source: USDA NRCS
Boundaries Are Approximate

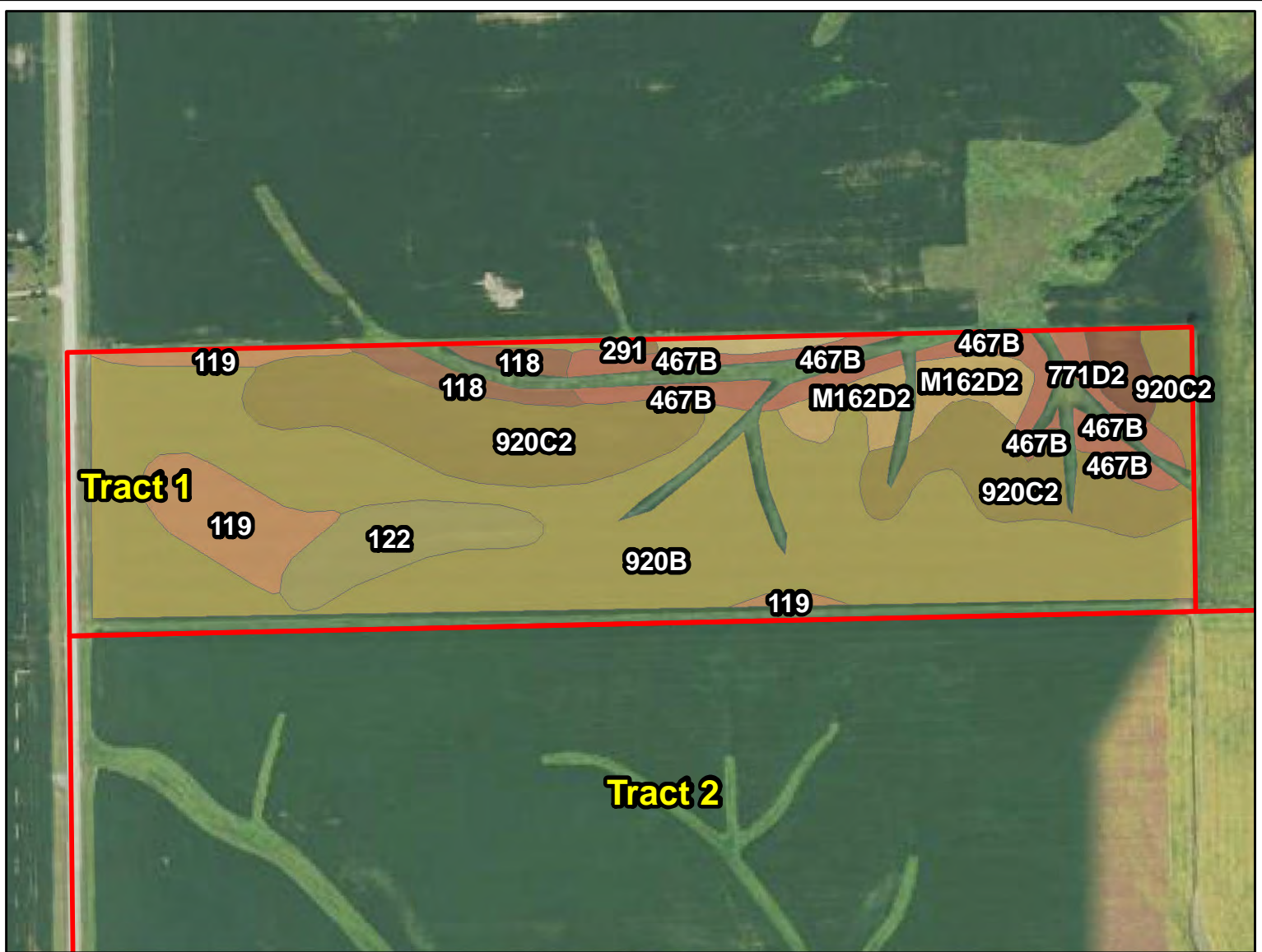


MAP SYMBOL	NAME	NON IRR		
		LCC	CSR2	ACRES
920B	Tama silt loam, sandy substratum, 2 to 5 percent slopes	IIe	92	20.1
920C2	Tama silty clay loam, sandy substratum, 5 to 9 percent slopes, eroded	IIIe	84	7.7
467B	Radford silt loam, 2 to 5 percent slopes	IIw	75	4.1
119	Muscatine silty clay loam, 0 to 2 percent slopes	Iw	100	2.8
122	Sperry silt loam, depressional, 0 to 1 percent slopes	IIIw	36	1.9
M162D2	Downs silt loam, till plain, 9 to 14 percent slopes, eroded	IVe	57	1.6
118	Garwin silty clay loam, 0 to 2 percent slopes	IIw	90	1.2
771D2	Waubeek silt loam, 9 to 14 percent slopes, moderately eroded	IIIe	56	0.6
M162C2	Downs silt loam, till plain, 5 to 9 percent slopes, eroded	IIIe	82	0.3
291	Atterberry silt loam, 0 to 2 percent slopes	Ie	90	0.1
TOTAL			84.6	40.3



L-1900623
Muscatine Co., IA

Latitude: 41.5306°N
Longitude: -90.9536°W
Imagery Source: USDA NAIP
Soil Data Source: USDA NRCS
Boundaries Are Approximate

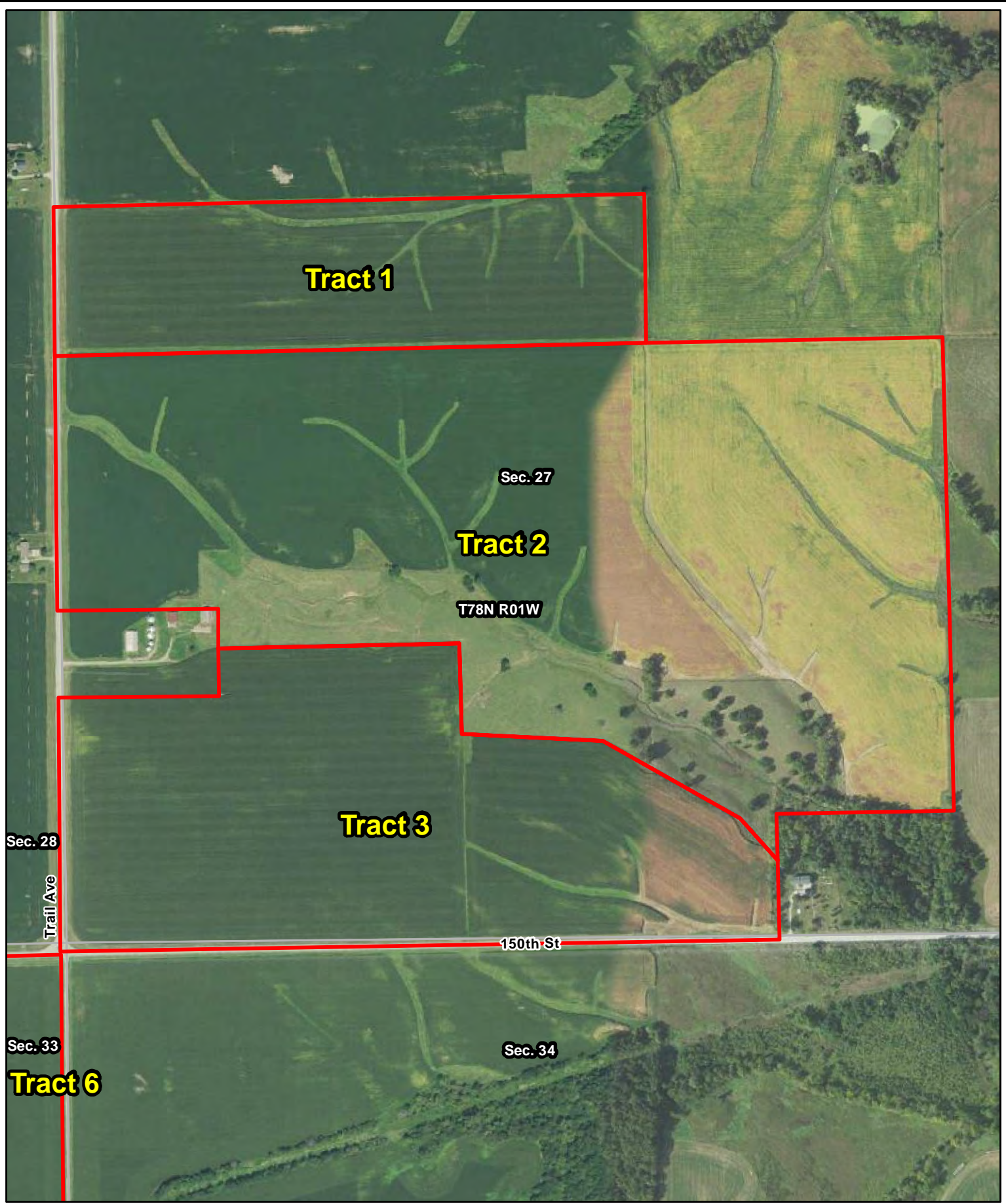


MAP SYMBOL	NAME	NON IRR		
		LCC	CSR2	ACRES
920B	Tama silt loam, sandy substratum, 2 to 5 percent slopes	lle	92	17.1
920C2	Tama silty clay loam, sandy substratum, 5 to 9 percent slopes, eroded	llle	84	7.5
467B	Radford silt loam, 2 to 5 percent slopes	llw	75	2.7
119	Muscatine silty clay loam, 0 to 2 percent slopes	lw	100	2.3
122	Sperry silt loam, depressional, 0 to 1 percent slopes	lllw	36	1.9
M162D2	Downs silt loam, till plain, 9 to 14 percent slopes, eroded	lve	57	1.5
118	Garwin silty clay loam, 0 to 2 percent slopes	llw	90	0.9
771D2	Waubeek silt loam, 9 to 14 percent slopes, moderately eroded	llle	56	0.6
M162C2	Downs silt loam, till plain, 5 to 9 percent slopes, eroded	llle	82	0.3
291	Atterberry silt loam, 0 to 2 percent slopes	le	90	0.1
TOTAL			84.2	34.8



L-1900623
Muscatine Co., IA

Latitude: 41.5306°N
Longitude: -90.9536°W
Imagery Source: USDA NAIP
Soil Data Source: USDA NRCS
Boundaries Are Approximate



Tract 1

Sec. 27

Tract 2

T78N R01W

Tract 3

Sec. 28

Trail Ave

150th St

Sec. 33

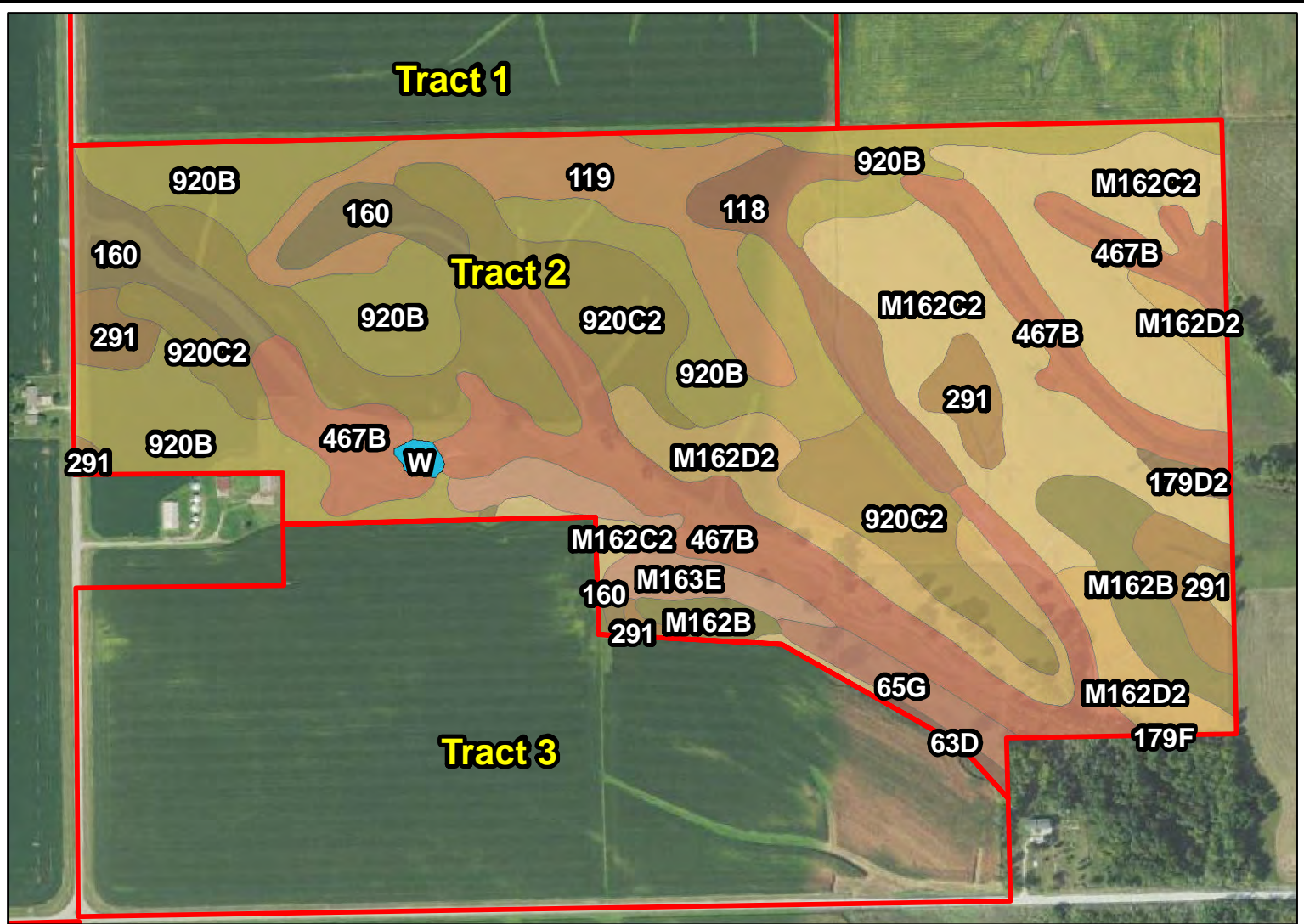
Tract 6

Sec. 34



**L-1900623
Muscatine Co., IA**

Latitude: 41.5265°N
Longitude: -90.9512°W
Imagery Source: USDA NAIP
Soil Data Source: USDA NRCS
Boundaries Are Approximate

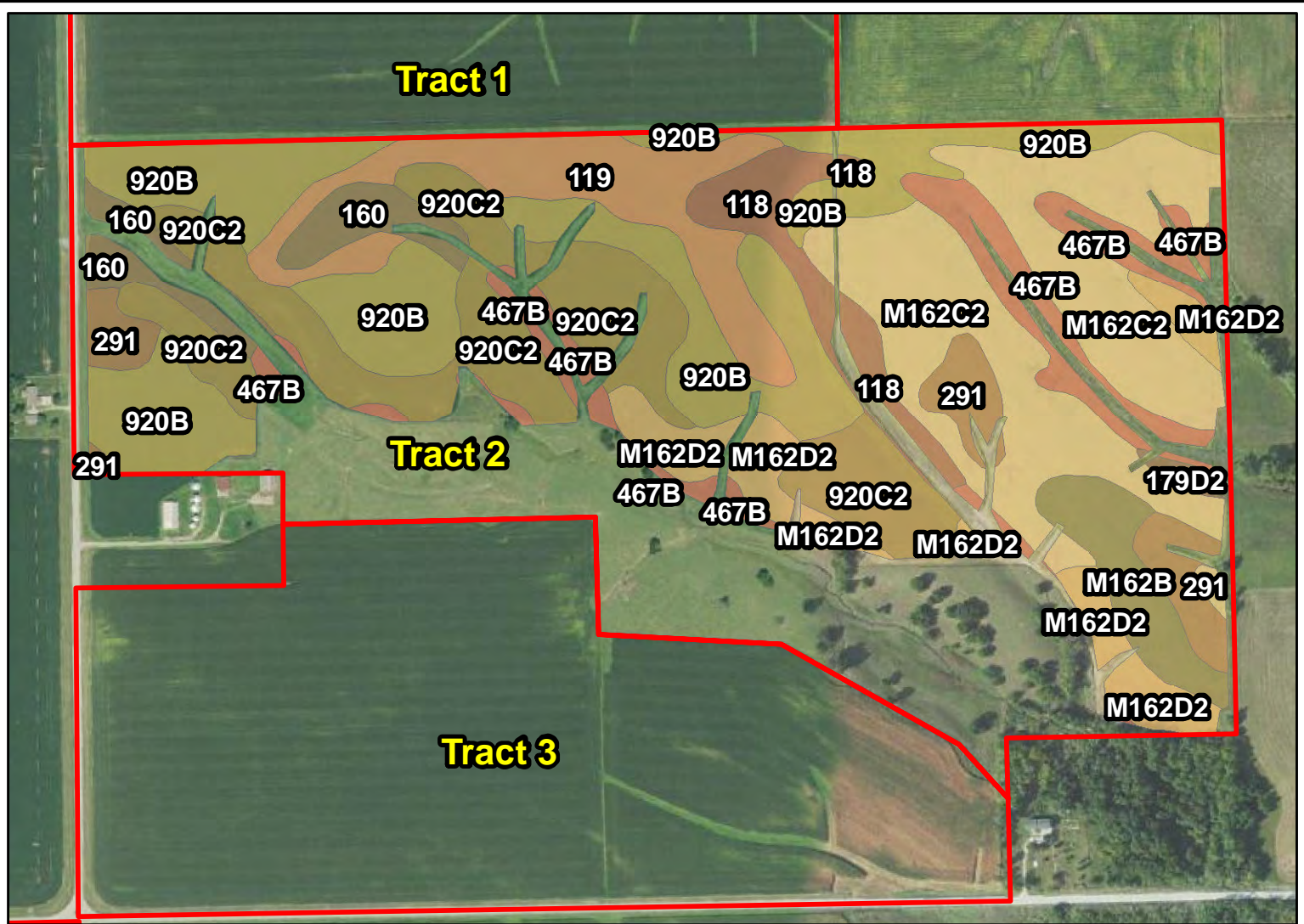


MAP SYMBOL	NAME	NON IRR		
		LCC	CSR2	ACRES
920B	Tama silt loam, sandy substratum, 2 to 5 percent slopes	Ile	92	28.5
467B	Radford silt loam, 2 to 5 percent slopes	IIlw	75	25.0
M162C2	Downs silt loam, till plain, 5 to 9 percent slopes, eroded	IIIle	82	24.0
920C2	Tama silty clay loam, sandy substratum, 5 to 9 percent slopes, eroded	IIle	84	21.2
M162D2	Downs silt loam, till plain, 9 to 14 percent slopes, eroded	IVe	57	10.7
119	Muscatine silty clay loam, 0 to 2 percent slopes	Iw	100	9.5
160	Walford silt loam, 0 to 2 percent slopes	IIIw	82	6.3
291	Atterberry silt loam, 0 to 2 percent slopes	Ie	90	6.1
118	Garwin silty clay loam, 0 to 2 percent slopes	IIw	90	5.4
M162B	Downs silt loam, till plain, 2 to 5 percent slopes	Ile	90	5.4
M163E	Fayette silt loam, till plain, 14 to 18 percent slopes	IVe	39	4.3
65G	Lindley loam, 25 to 50 percent slopes	VIIe	5	2.3
179D2	Gara loam, 9 to 14 percent slopes, moderately eroded	IVe	47	0.6
63D	Chelsea loamy fine sand, 9 to 14 percent slopes	VIIs	5	0.4
W	Water	---	---	0.4
179F	Gara loam, 14 to 25 percent slopes	VIe	26	0.1
TOTAL			80.3	150.2



L-1900623
Muscatine Co., IA

Latitude: 41.5265°N
Longitude: -90.9512°W
Imagery Source: USDA NAIP
Soil Data Source: USDA NRCS
Boundaries Are Approximate



MAP SYMBOL	NAME	NON IRR		
		LCC	CSR2	ACRES
920B	Tama silt loam, sandy substratum, 2 to 5 percent slopes	Ile	92	25.1
M162C2	Downs silt loam, till plain, 5 to 9 percent slopes, eroded	IIIe	82	22.0
920C2	Tama silty clay loam, sandy substratum, 5 to 9 percent slopes, eroded	IIIe	84	18.0
119	Muscatine silty clay loam, 0 to 2 percent slopes	Iw	100	9.5
467B	Radford silt loam, 2 to 5 percent slopes	IIw	75	7.9
M162D2	Downs silt loam, till plain, 9 to 14 percent slopes, eroded	IVe	57	7.0
291	Atterberry silt loam, 0 to 2 percent slopes	Ie	90	4.8
118	Garwin silty clay loam, 0 to 2 percent slopes	IIw	90	4.6
160	Walford silt loam, 0 to 2 percent slopes	IIIw	82	4.1
M162B	Downs silt loam, till plain, 2 to 5 percent slopes	Ile	90	4.0
179D2	Gara loam, 9 to 14 percent slopes, moderately eroded	IVe	47	0.5
TOTAL			85.0	107.4



L-1900623
Muscatine Co., IA

Latitude: 41.5265°N
Longitude: -90.9512°W
Imagery Source: USDA NAIP
Soil Data Source: USDA NRCS
Boundaries Are Approximate

Tract 1

Tract 2

Sec. 27

Sec. 28

T78N R01W

Tract 3

Trail Ave

150th St

Tract 6

Sec. 33

Sec. 34

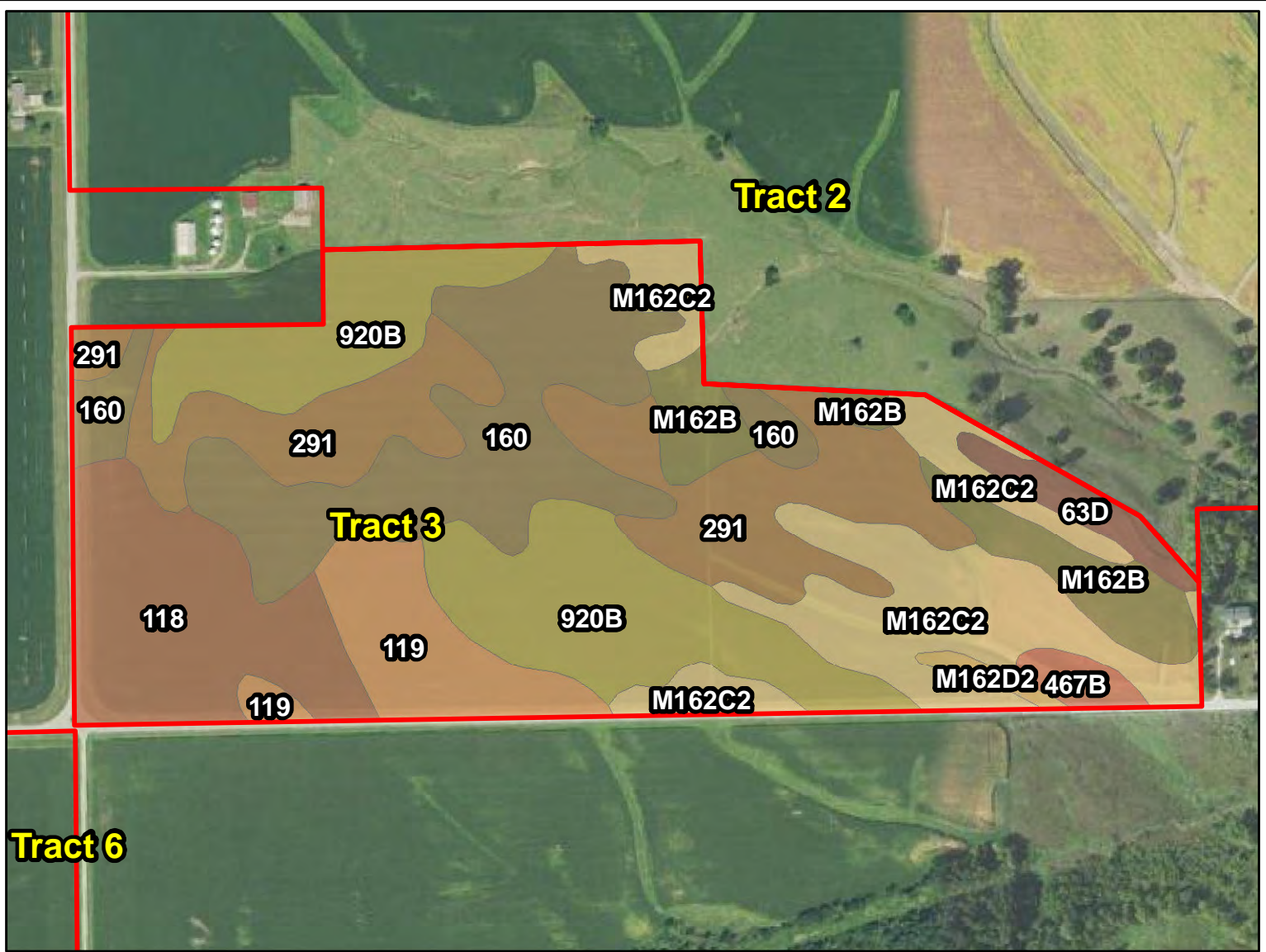
Tract 5

Tract 4



L-1900623
Muscatine Co., IA

Latitude: 41.5242°N
Longitude: -90.9527°W
Imagery Source: USDA NAIP
Soil Data Source: USDA NRCS
Boundaries Are Approximate

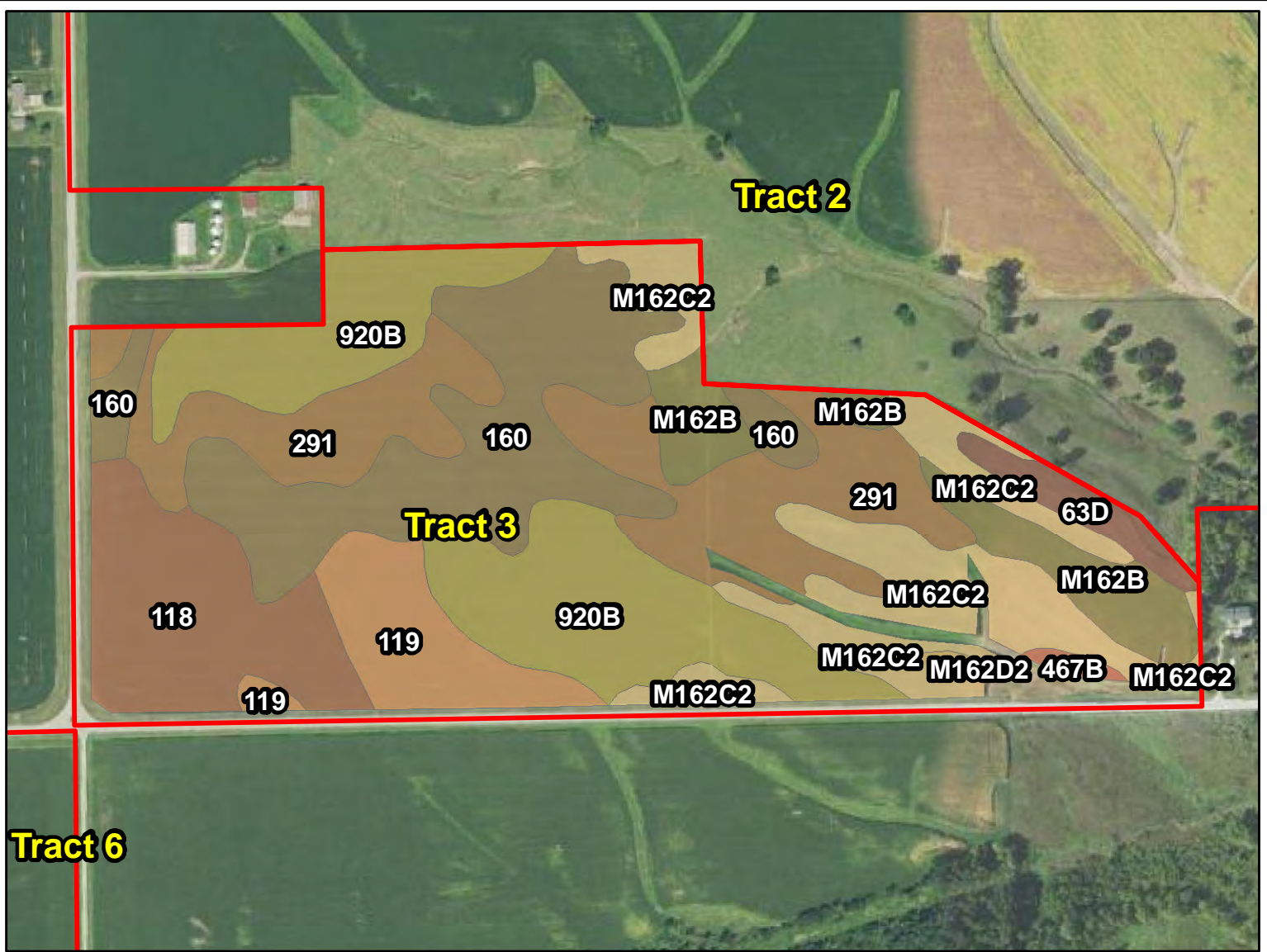


MAP SYMBOL	NAME	NON IRR		
		LCC	CSR2	ACRES
920B	Tama silt loam, sandy substratum, 2 to 5 percent slopes	lle	92	14.8
160	Walford silt loam, 0 to 2 percent slopes	lllw	82	13.8
291	Atterberry silt loam, 0 to 2 percent slopes	le	90	13.4
M162C2	Downs silt loam, till plain, 5 to 9 percent slopes, eroded	llle	82	12.2
118	Garwin silty clay loam, 0 to 2 percent slopes	llw	90	9.5
119	Muscatine silty clay loam, 0 to 2 percent slopes	lw	100	5.4
M162B	Downs silt loam, till plain, 2 to 5 percent slopes	lle	90	4.9
63D	Chelsea loamy fine sand, 9 to 14 percent slopes	Vls	5	1.6
467B	Radford silt loam, 2 to 5 percent slopes	llw	75	1.0
M162D2	Downs silt loam, till plain, 9 to 14 percent slopes, eroded	lve	57	0.5
TOTAL			86.2	77.0



L-1900623
Muscatine Co., IA

Latitude: 41.5242°N
Longitude: -90.9527°W
Imagery Source: USDA NAIP
Soil Data Source: USDA NRCS
Boundaries Are Approximate



MAP		NON IRR		
SYMBOL	NAME	LCC	CSR2	ACRES
920B	Tama silt loam, sandy substratum, 2 to 5 percent slopes	Ile	92	14.4
160	Walford silt loam, 0 to 2 percent slopes	IIIw	82	13.5
291	Atterberry silt loam, 0 to 2 percent slopes	Ie	90	13.0
M162C2	Downs silt loam, till plain, 5 to 9 percent slopes, eroded	IIIe	82	10.6
118	Garwin silty clay loam, 0 to 2 percent slopes	IIw	90	8.1
M162B	Downs silt loam, till plain, 2 to 5 percent slopes	Ile	90	4.9
119	Muscatine silty clay loam, 0 to 2 percent slopes	Iw	100	4.8
63D	Chelsea loamy fine sand, 9 to 14 percent slopes	VI s	5	1.6
467B	Radford silt loam, 2 to 5 percent slopes	IIw	75	0.3
M162D2	Downs silt loam, till plain, 9 to 14 percent slopes, eroded	IVe	57	0.3
TOTAL			86.3	71.5



L-1900623
Muscatine Co., IA

Latitude: 41.5242°N
Longitude: -90.9527°W
Imagery Source: USDA NAIP
Soil Data Source: USDA NRCS
Boundaries Are Approximate

Tract 6

Trail Ave

Sec. 34

T78N R01W

Tract 5

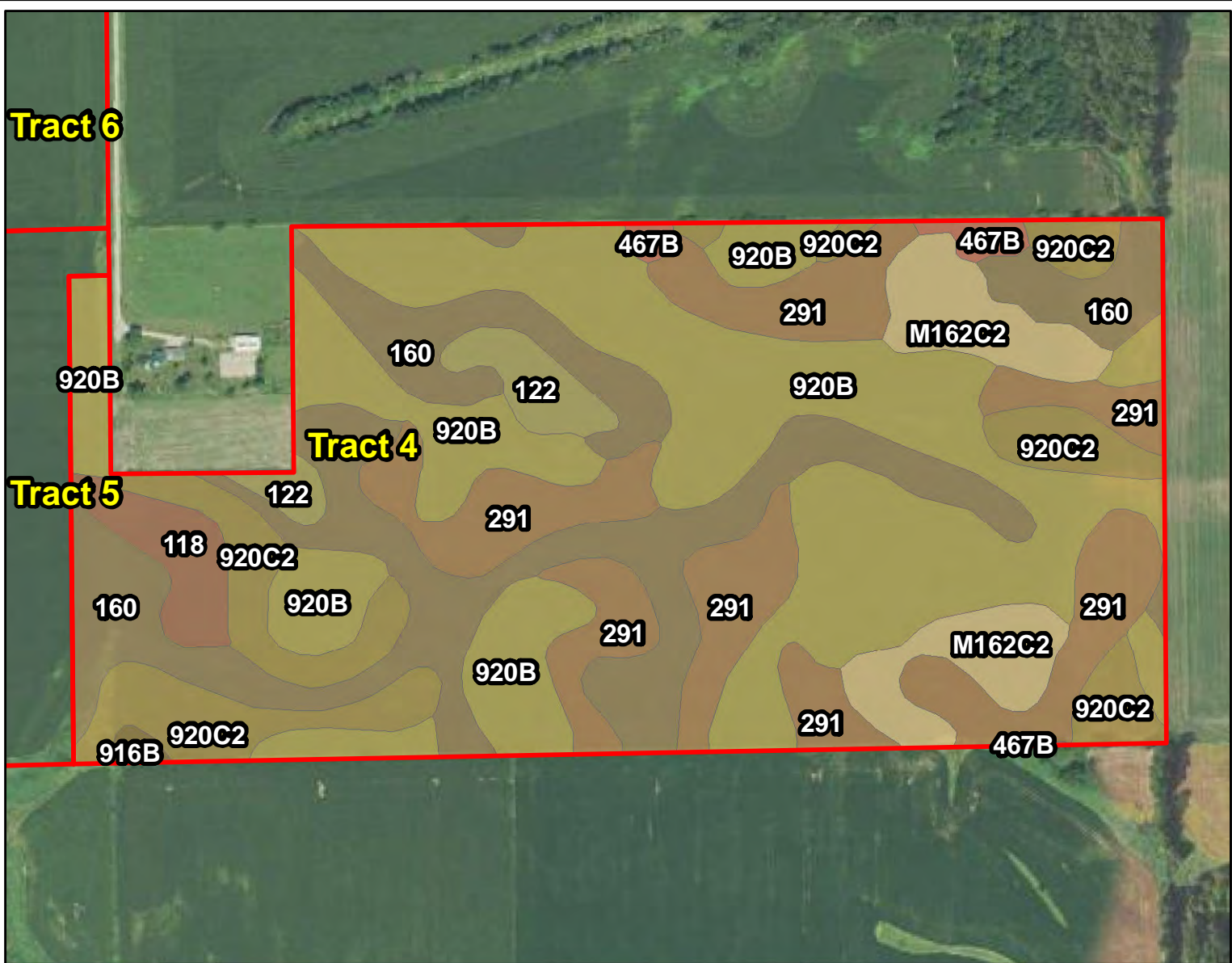
Sec. 33

Tract 4



L-1900623
Muscatine Co., IA

Latitude: 41.5169°N
Longitude: -90.9540°W
Imagery Source: USDA NAIP
Soil Data Source: USDA NRCS
Boundaries Are Approximate

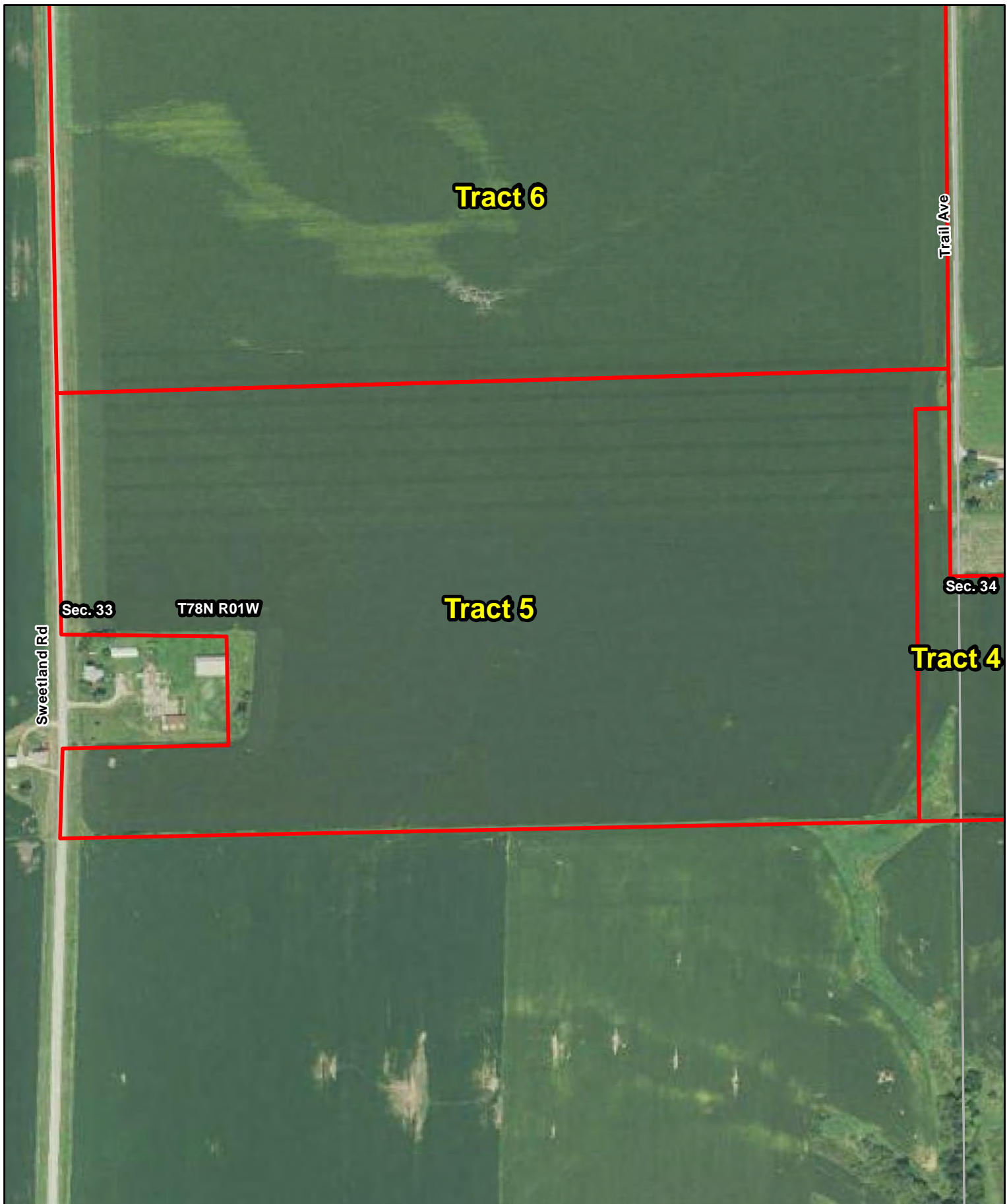


MAP		NON IRR		
SYMBOL	NAME	LCC	CSR2	ACRES
920B	Tama silt loam, sandy substratum, 2 to 5 percent slopes	lle	92	28.0
160	Walford silt loam, 0 to 2 percent slopes	lllw	82	17.4
291	Atterberry silt loam, 0 to 2 percent slopes	le	90	14.1
920C2	Tama silty clay loam, sandy substratum, 5 to 9 percent slopes, eroded	llle	84	8.1
M162C2	Downs silt loam, till plain, 5 to 9 percent slopes, eroded	llle	82	4.9
122	Sperry silt loam, depressional, 0 to 1 percent slopes	lllw	36	1.9
118	Garwin silty clay loam, 0 to 2 percent slopes	llw	90	1.8
467B	Radford silt loam, 2 to 5 percent slopes	llw	75	0.8
916B	Downs silt loam, sandy substratum, 2 to 5 percent slopes	lle	88	0.2
TOTAL			86.3	77.3



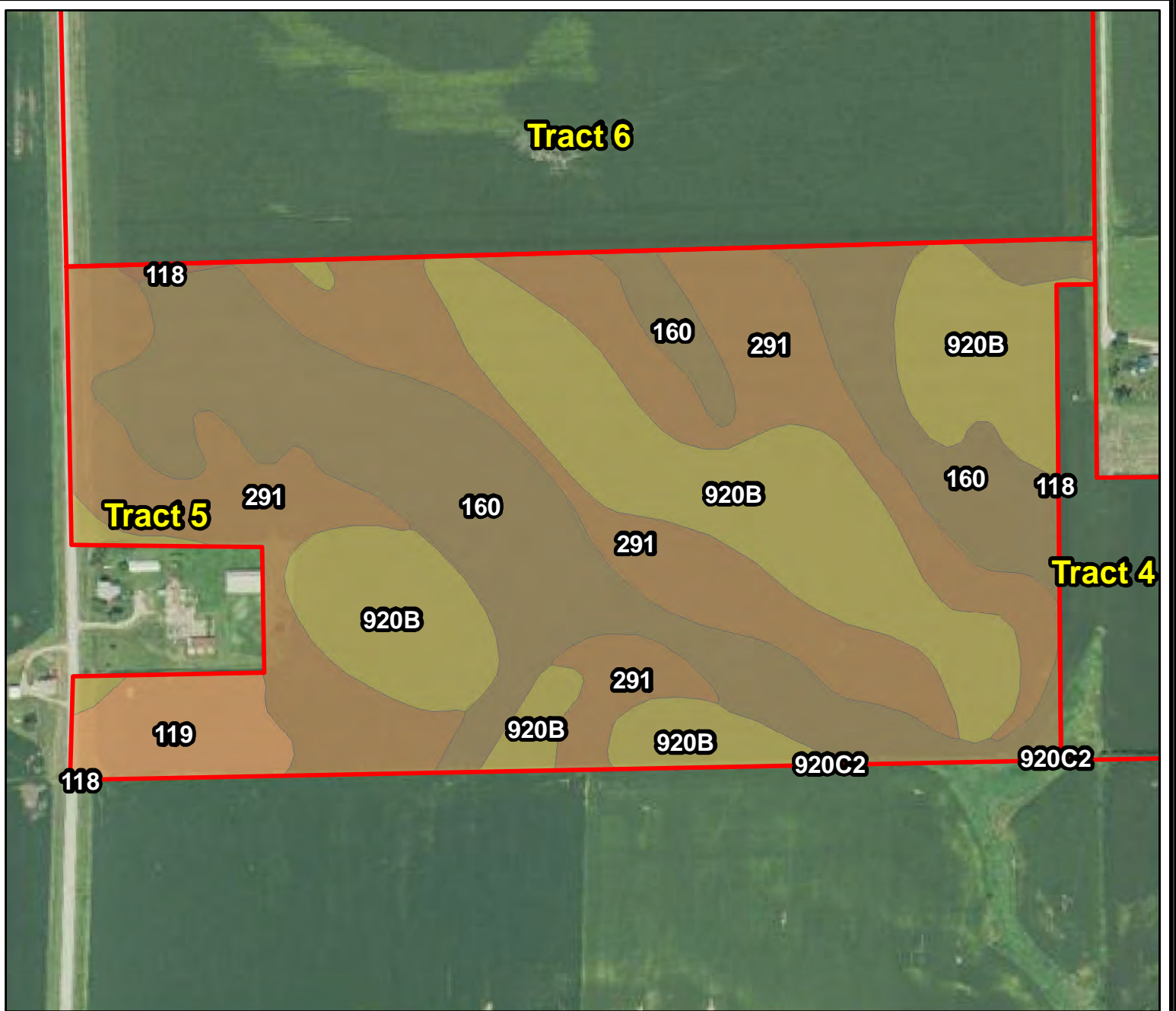
L-1900623
Muscatine Co., IA

Latitude: 41.5169°N
Longitude: -90.9540°W
Imagery Source: USDA NAIP
Soil Data Source: USDA NRCS
Boundaries Are Approximate



L-1900623
Muscatine Co., IA

Latitude: 41.5169°N
Longitude: -90.9635°W
Imagery Source: USDA NAIP
Soil Data Source: USDA NRCS
Boundaries Are Approximate

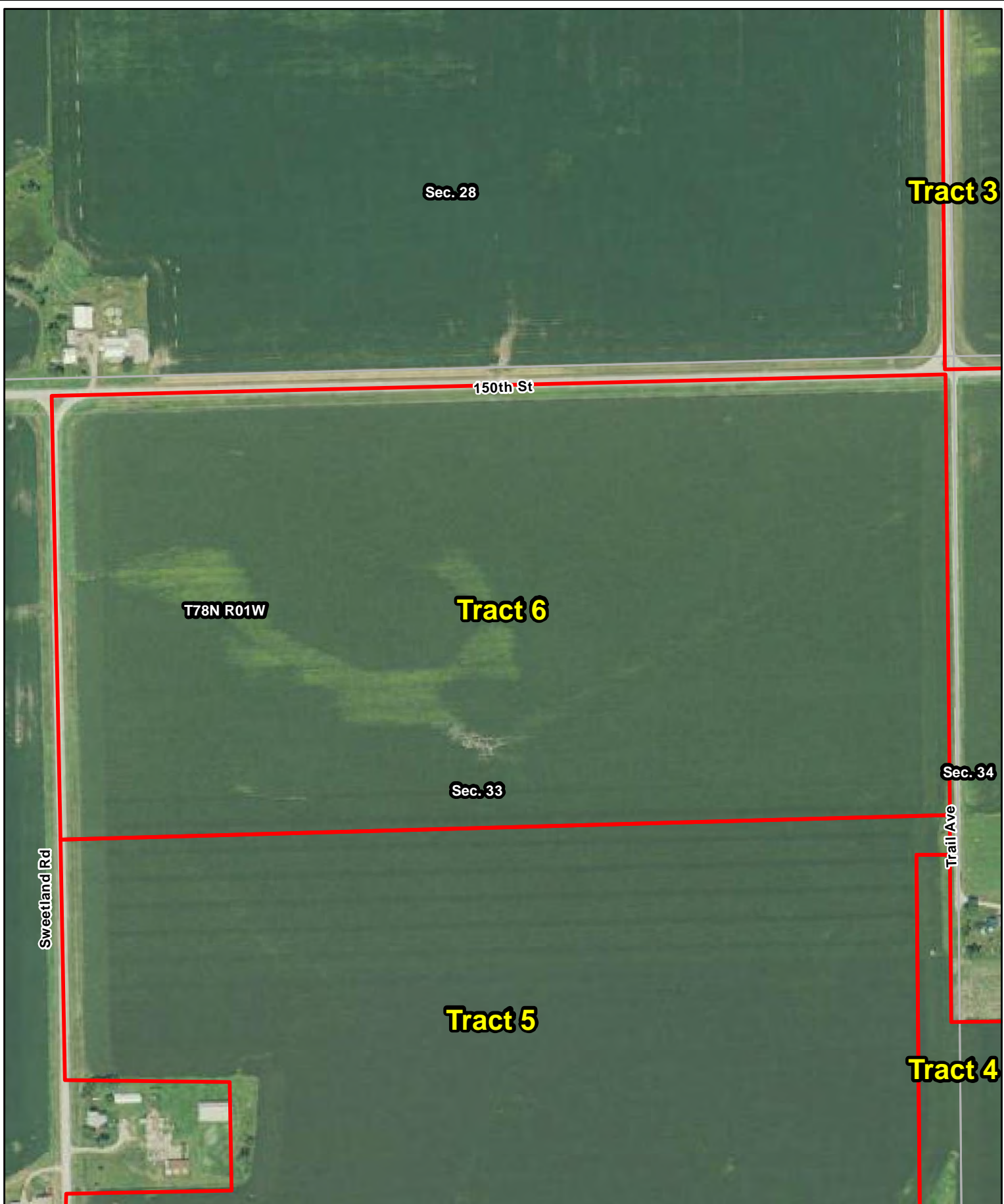


MAP SYMBOL	NAME	NON IRR LCC	CSR2	ACRES
291	Atterberry silt loam, 0 to 2 percent slopes	le	90	25.7
160	Walford silt loam, 0 to 2 percent slopes	lllw	82	23.1
920B	Tama silt loam, sandy substratum, 2 to 5 percent slopes	lle	92	22.8
119	Muscatine silty clay loam, 0 to 2 percent slopes	lw	100	3.1
118	Garwin silty clay loam, 0 to 2 percent slopes	llw	90	0.2
920C2	Tama silty clay loam, sandy substratum, 5 to 9 percent slopes, eroded	llle	84	0.1
TOTAL			88.5	75.0



**L-1900623
Muscatine Co., IA**

Latitude: 41.5169°N
 Longitude: -90.9635°W
 Imagery Source: USDA NAIP
 Soil Data Source: USDA NRCS
 Boundaries Are Approximate



Sec. 28

Tract 3

150th St

T78N R01W

Tract 6

Sec. 33

Sec. 34

Sweetland Rd

Trail Ave

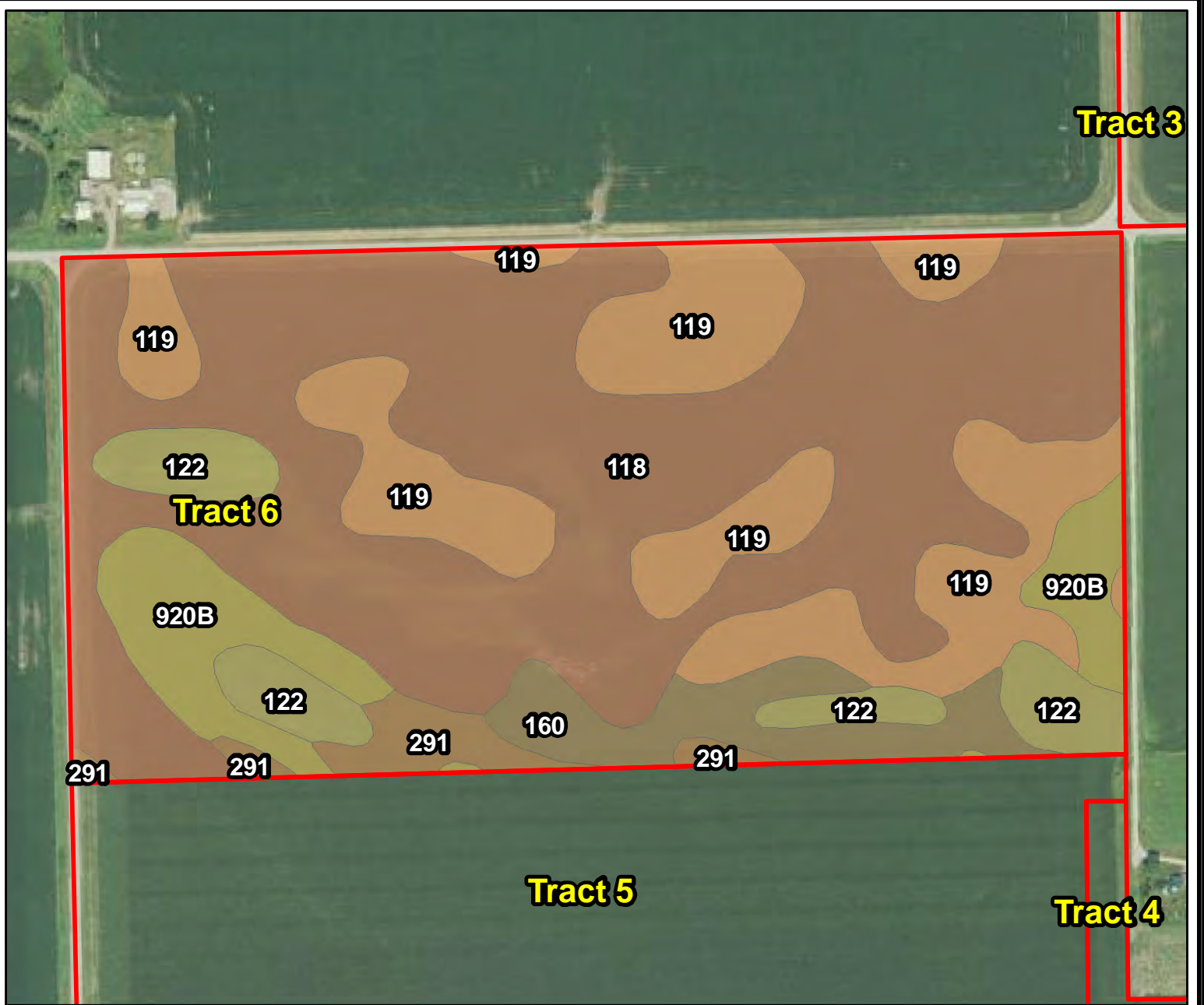
Tract 5

Tract 4



L-1900623
Muscatine Co., IA

Latitude: 41.5205°N
Longitude: -90.9634°W
Imagery Source: USDA NAIP
Soil Data Source: USDA NRCS
Boundaries Are Approximate

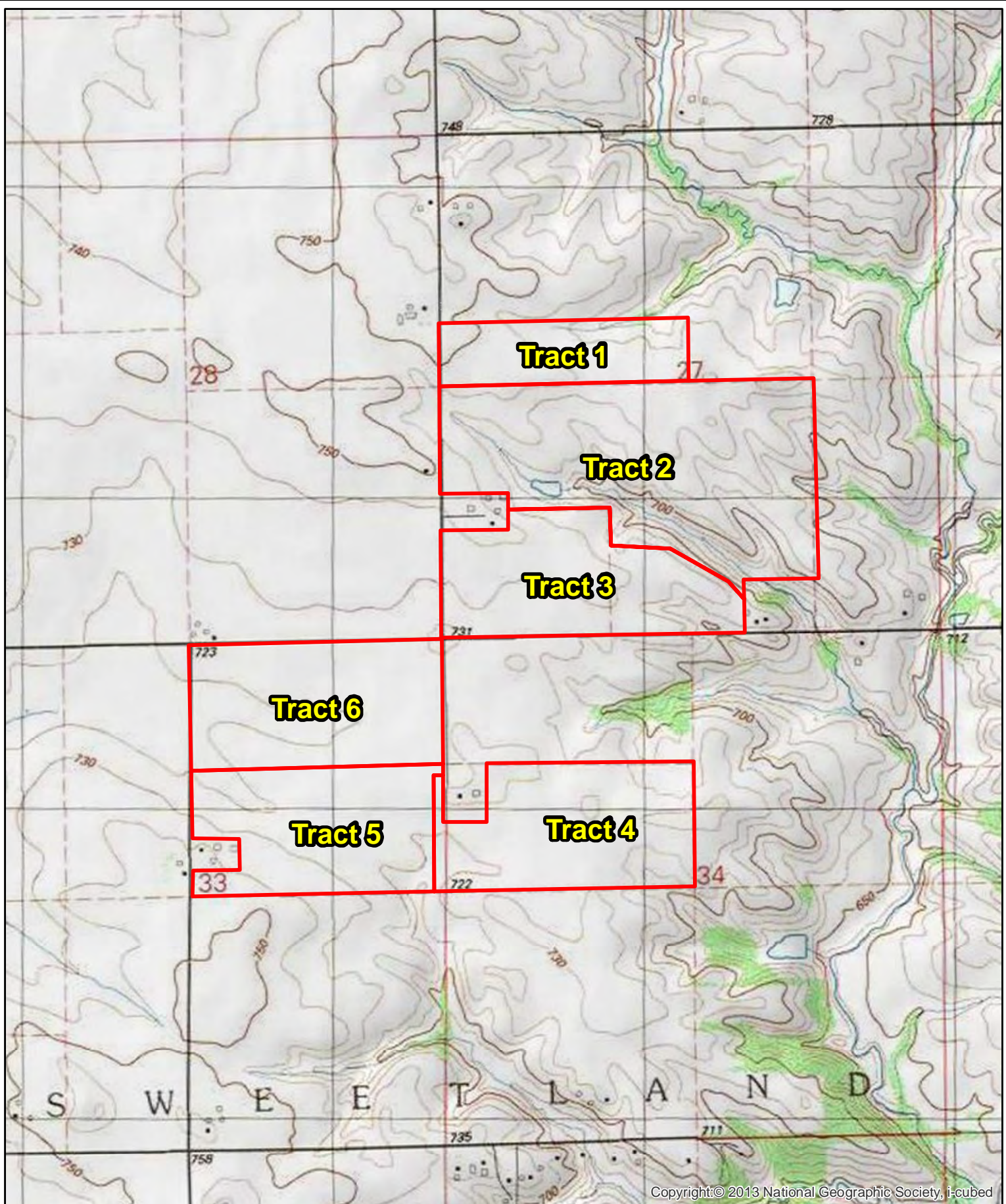


MAP SYMBOL	NAME	NON IRR LCC	CSR2	ACRES
118	Garwin silty clay loam, 0 to 2 percent slopes	llw	90	44.2
119	Muscatine silty clay loam, 0 to 2 percent slopes	lw	100	18.0
920B	Tama silt loam, sandy substratum, 2 to 5 percent slopes	lle	92	6.3
122	Sperry silt loam, depressional, 0 to 1 percent slopes	lllw	36	5.3
160	Walford silt loam, 0 to 2 percent slopes	lllw	82	4.8
291	Atterberry silt loam, 0 to 2 percent slopes	le	90	2.4
TOTAL			88.4	80.9



**L-1900623
Muscatine Co., IA**

Latitude: 41.5205°N
 Longitude: -90.9634°W
 Imagery Source: USDA NAIP
 Soil Data Source: USDA NRCS
 Boundaries Are Approximate

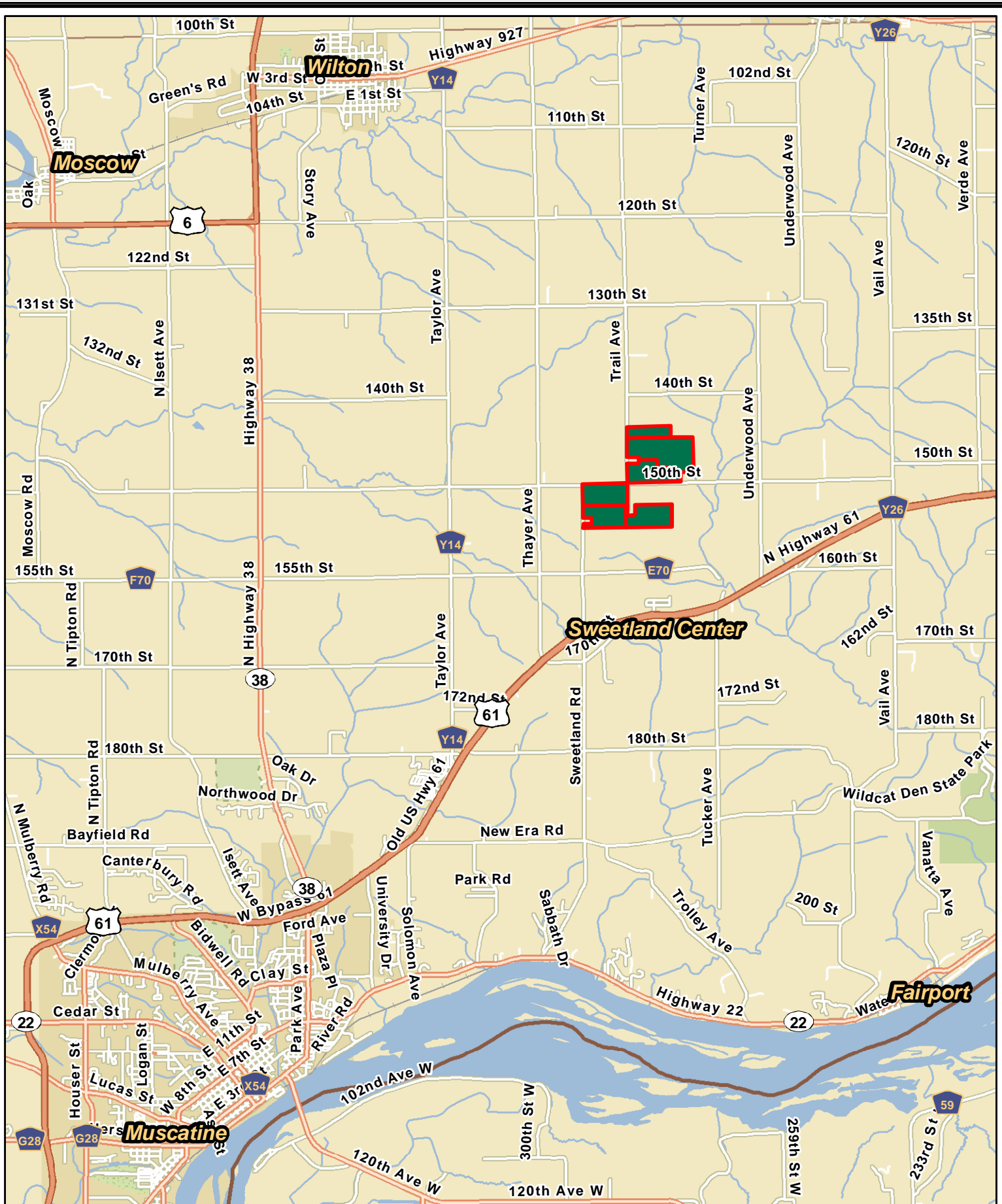


Copyright:© 2013 National Geographic Society, i-cubed



L-1900623
Muscatine Co., IA

Latitude: 41.5233°N
Longitude: -90.9561°W
Imagery Source: USDA NAIP
Soil Data Source: USDA NRCS
Boundaries Are Approximate



**L-1900623
Muscatine Co., IA**

Latitude: 41.5019°N
 Longitude: -90.9868°W
 Imagery Source: USDA NAIP
 Soil Data Source: USDA NRCS
 Boundaries Are Approximate