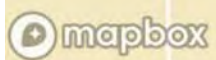


L-1900642

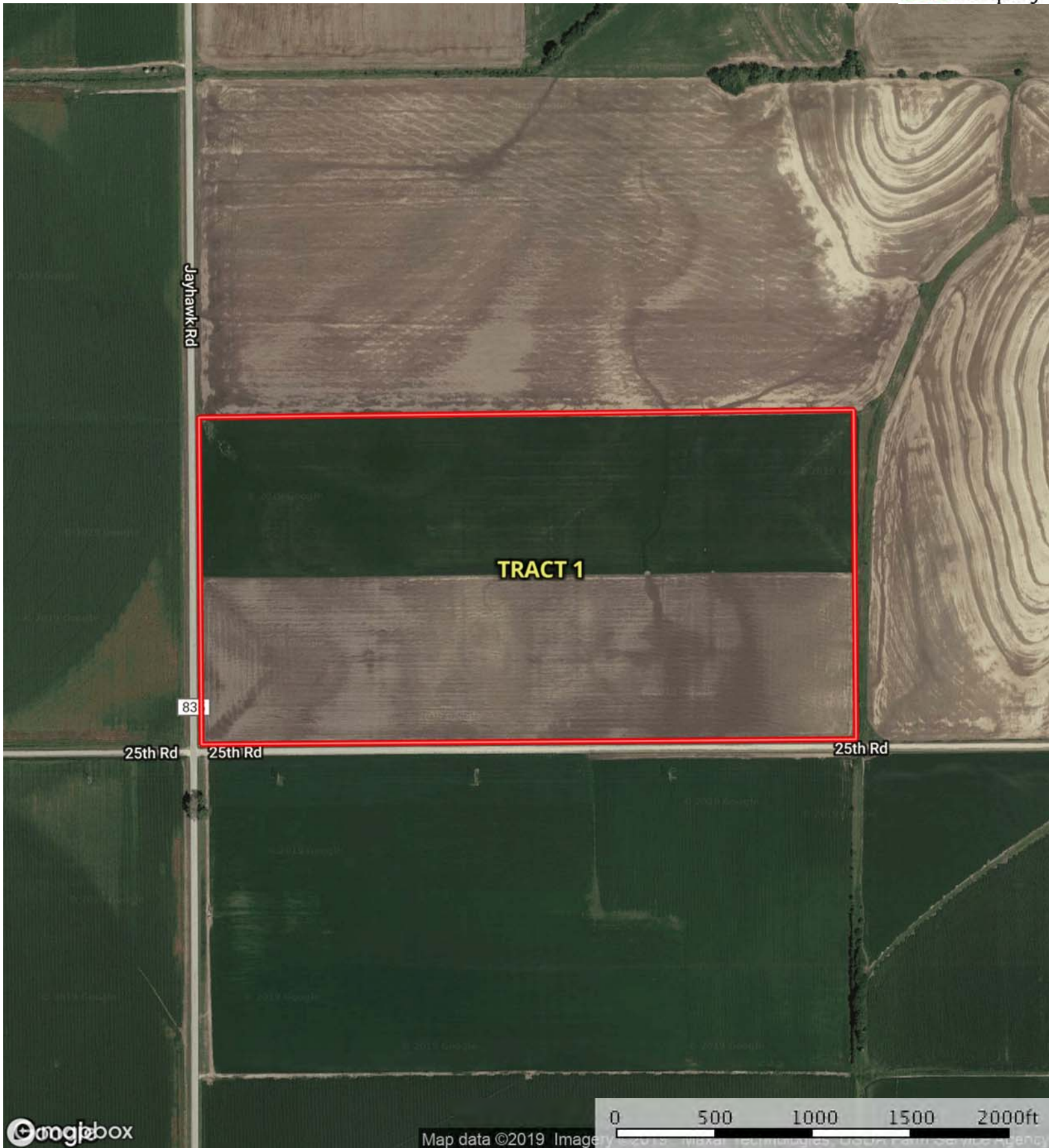
Clay County, Kansas, 161.5 AC +/-

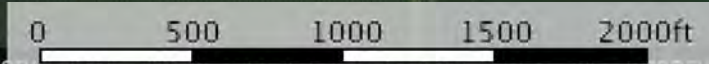


Tract 1



The information contained herein was obtained from sources deemed to be reliable. MapRight Services makes no warranties or guarantees as to the completeness or accuracy thereof.





SOIL CODE	SOIL DESCRIPTION	ACRES	%	CAP
3261	Muir silt loam, very rarely flooded	64.0	83.21	1
3254	Sutphen silty clay loam, very rarely flooded	12.9	16.79	2w
TOTALS		76.9	100%	1.17

Capability Legend

Increased Limitations and Hazards

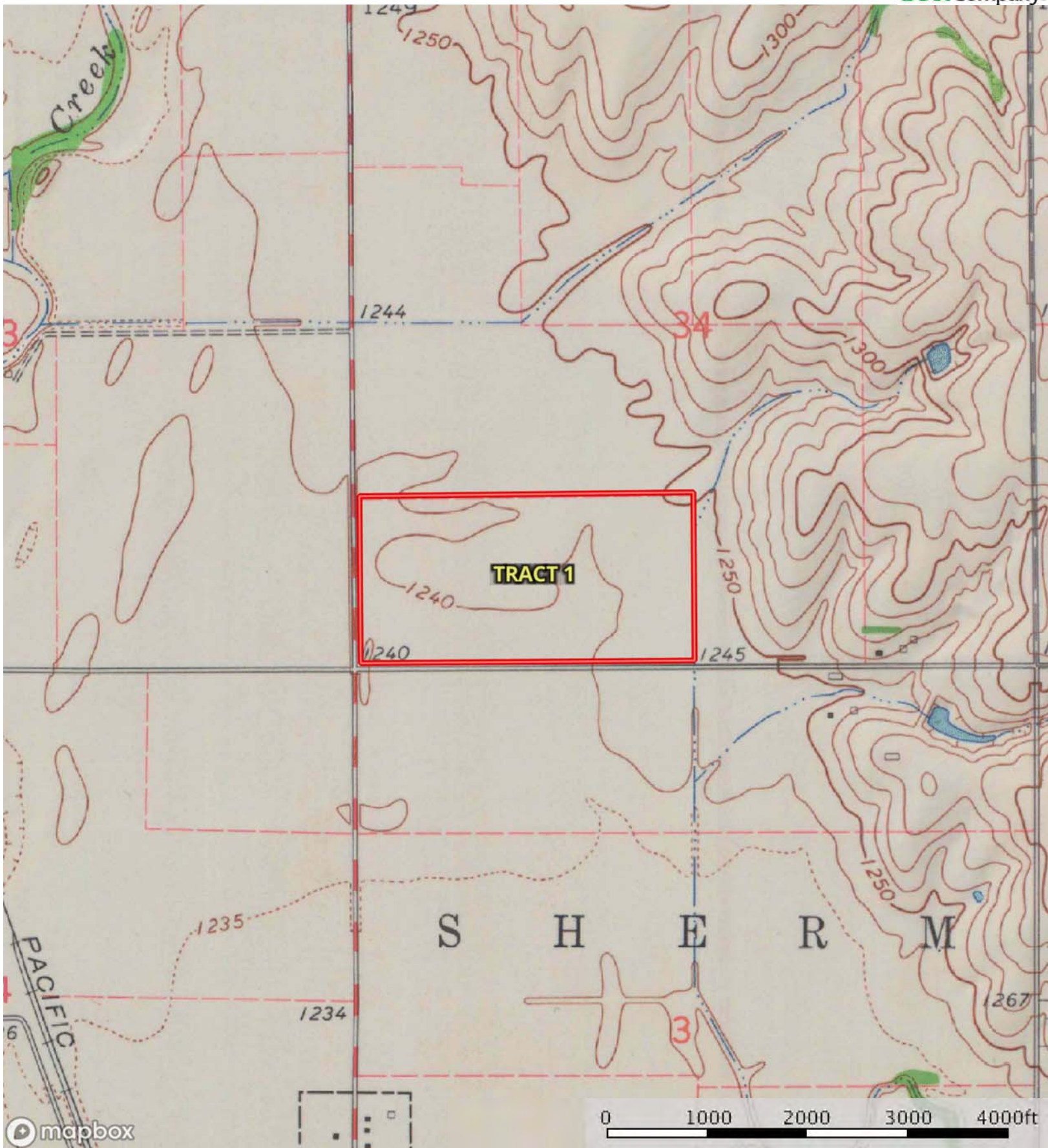
Decreased Adaptability and Freedom of Choice Users

Land, Capability Class(non-irrigated)	1	2	3	4	5	6	7	8
'Wild Life'	•	•	•	•	•	•	•	•
Forestry	•	•	•	•	•	•	•	
Limited	•	•	•	•	•	•	•	
Moderate	•	•	•	•	•	•		
Intense	•	•	•	•	•			
Limited	•	•	•	•				
Moderate	•	•	•					
Intense	•	•						
Very Intense	•							

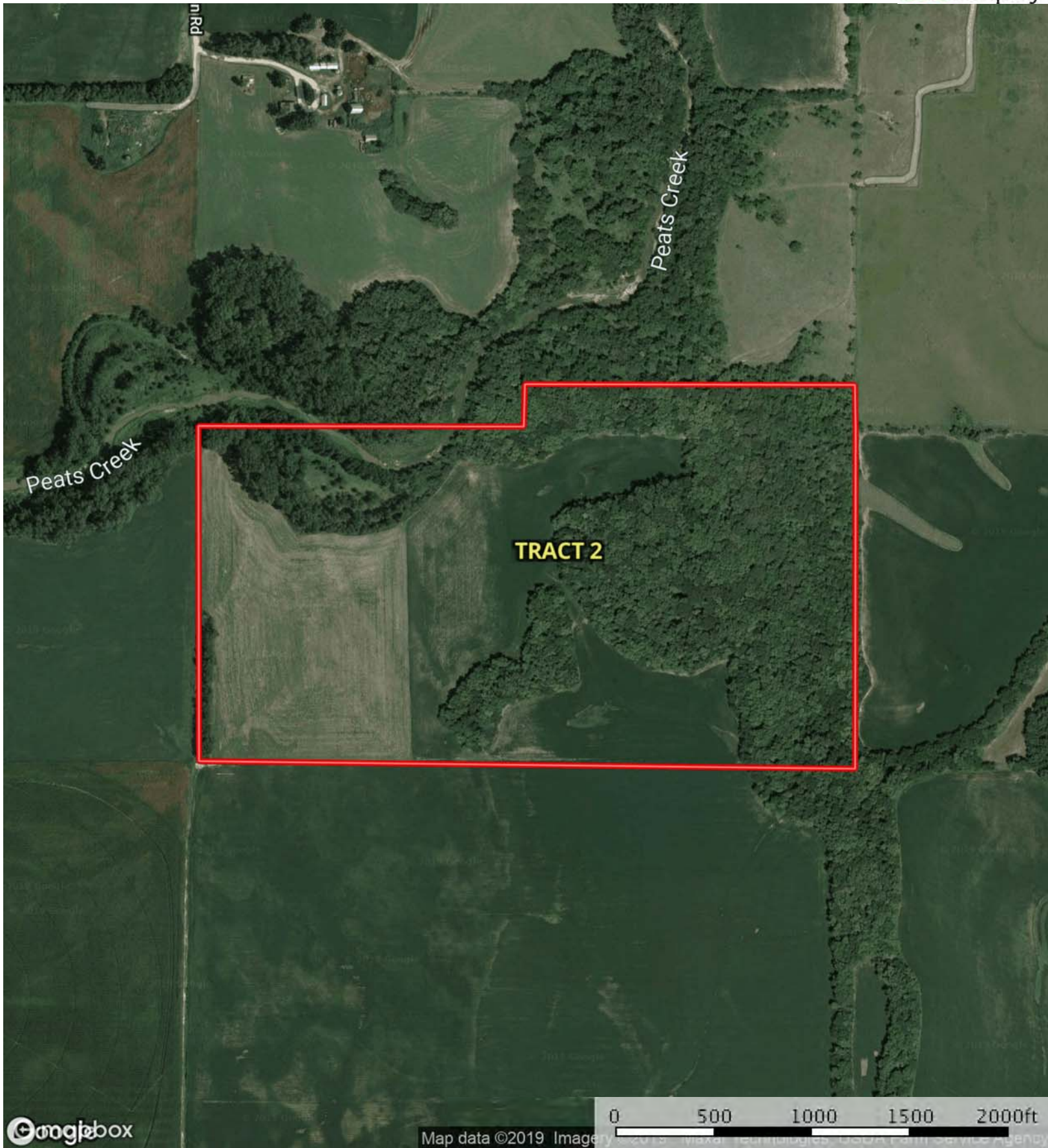
Grazing Cultivation

(c) climatic limitations (e) susceptibility to erosion

(s) soil limitations within the rooting zone (w) excess of water



Tract 1





Tract 2 84.6 ac

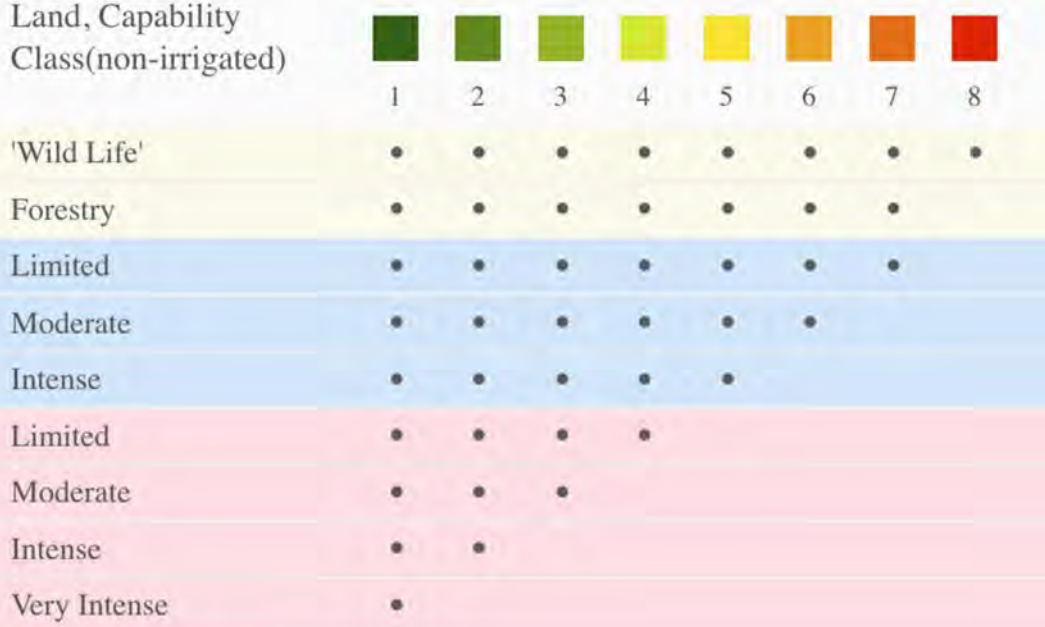
SOIL CODE	SOIL DESCRIPTION	ACRES	%	CAP
2113	Inavale loamy sand, occasionally flooded	29.0	34.25	3w
3580	Huscher silt loam, occasionally flooded	4.8	5.73	2w
3521	Cass fine sandy loam, occasionally flooded	5.0	5.95	2w
3261	Muir silt loam, very rarely flooded	0.0	0.0	1
3844	Geary silt loam, 3 to 7 percent slopes	0.7	0.82	3e
3846	Geary silty clay loam, 3 to 7 percent slopes, eroded	1.8	2.07	3e
3845	Geary silt loam, 7 to 15 percent slopes	5.8	6.81	6e
3545	Hobbs silt loam, channeled, frequently flooded	37.5	44.37	5w
TOTALS		84.6	100%	3.98

Capability Legend

Increased Limitations and Hazards

Decreased Adaptability and Freedom of Choice Users

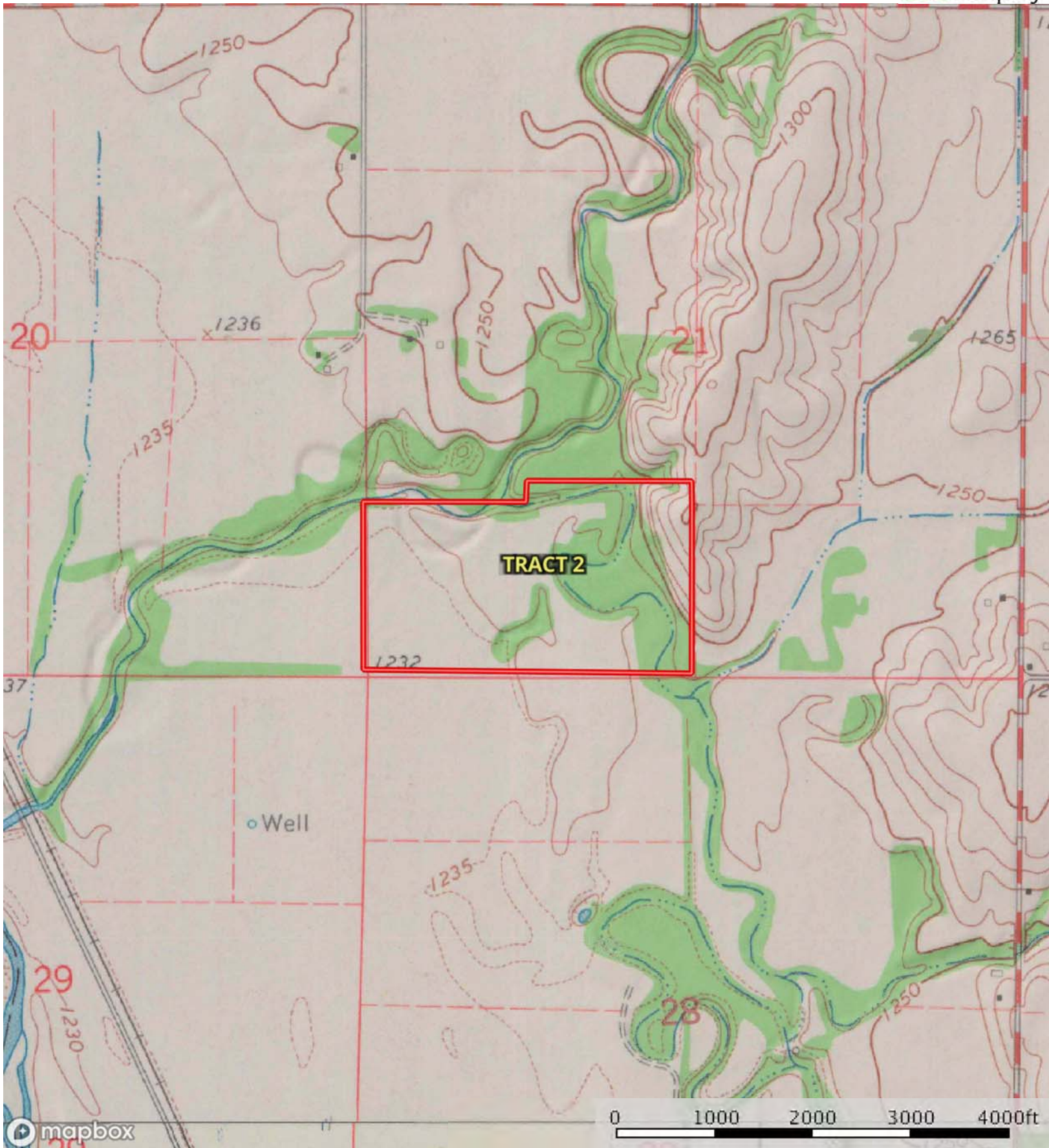
Land, Capability Class(non-irrigated)



Grazing Cultivation

(c) climatic limitations (e) susceptibility to erosion

(s) soil limitations within the rooting zone (w) excess of water



Tract 2