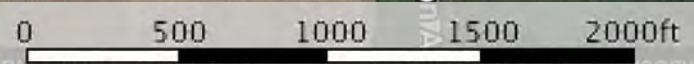


Google

Map data ©2019 Imagery



Boundary



L-1900703

Webster County, Iowa, 151.4 AC +/-



Google

Map data ©2019 Imagery

Boundary



The information contained herein was obtained from sources deemed to be reliable. MapRight Services makes no warranties or guarantees as to the completeness or accuracy thereof.

|  Boundary 107.5 ac

SOIL CODE	SOIL DESCRIPTION	ACRES	%	CSR2	CAP
259	Biscay clay loam, 0 to 2 percent slopes	0.3	0.27	52	2w
108	Wadena loam, 0 to 2 percent slopes	2.3	2.15	56	2s
203	Cylinder loam, 0 to 2 percent slopes	3.5	3.23	58	2s
108B	Wadena loam, 2 to 6 percent slopes	2.4	2.19	52	2e
485	Spillville loam, 0 to 2 percent slopes, occasionally flooded	15.4	14.34	88	2w
107	Webster clay loam, 0 to 2 percent slopes	15.4	14.37	86	2w
27B	Terril loam, 2 to 6 percent slopes	5.1	4.74	87	2e
541C	Estherville-Hawick complex, 5 to 9 percent slopes	1.5	1.41	29	4s
138B	Clarion loam, 2 to 6 percent slopes	38.6	35.93	89	2e
262G	Lester-Belview complex, 22 to 40 percent slopes	3.9	3.59	9	7e
138C2	Clarion loam, 6 to 10 percent slopes, moderately eroded	12.6	11.7	83	3e
55	Nicollet clay loam, 1 to 3 percent slopes	3.9	3.63	89	1
835E2	Omsrud-Storden complex, 10 to 22 percent slopes, moderately eroded	0.5	0.42	36	4e
638C2	Clarion-Storden complex, 6 to 10 percent slopes, moderately eroded	2.2	2.02	75	3e
TOTALS		107.5	100%	80.78	2.32

## Capability Legend

Increased Limitations and Hazards

Decreased Adaptability and Freedom of Choice Users

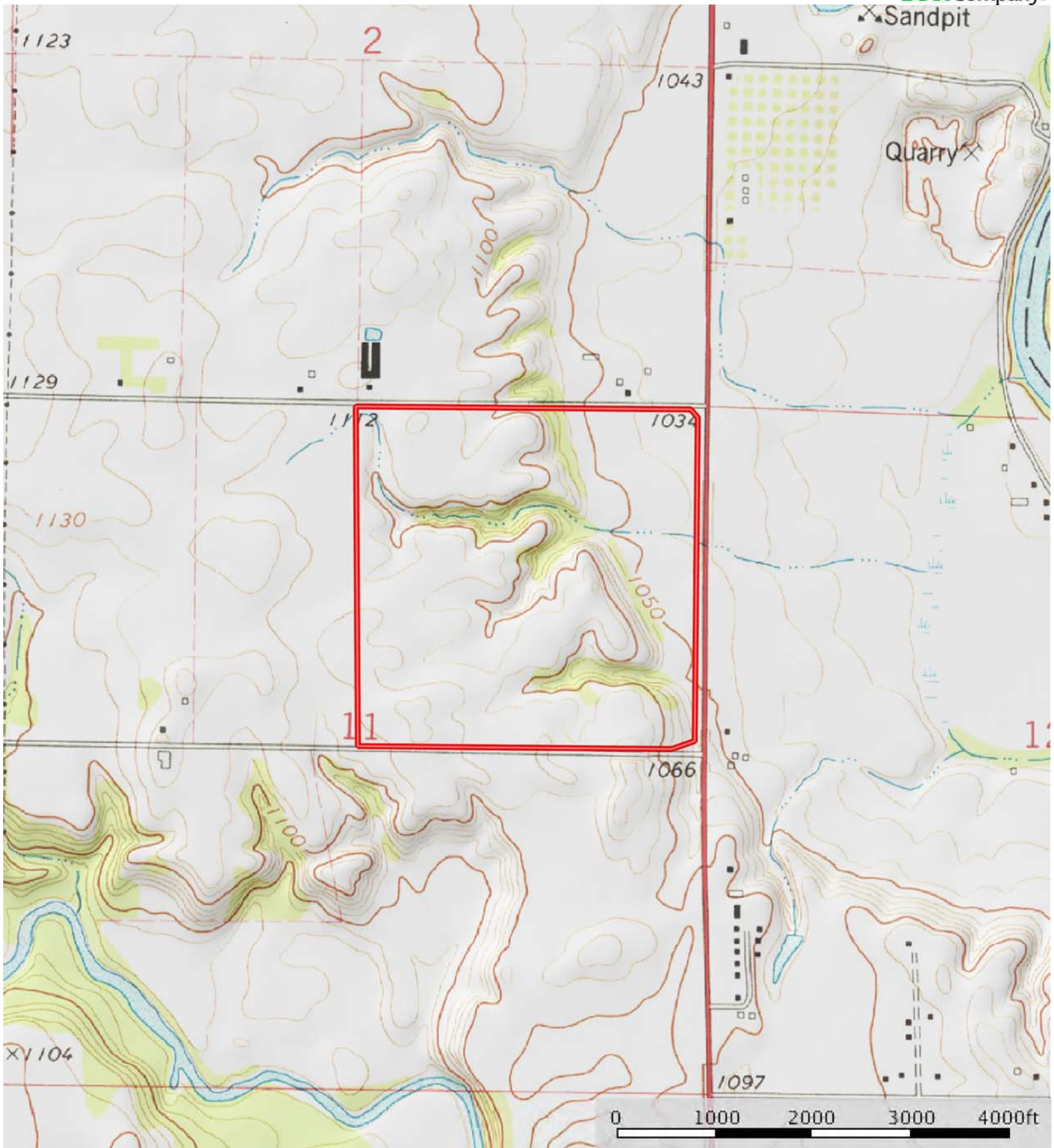
Land, Capability Class(non-irrigated)	1	2	3	4	5	6	7	8
'Wild Life'	•	•	•	•	•	•	•	•
Forestry	•	•	•	•	•	•	•	
Limited	•	•	•	•	•	•	•	
Moderate	•	•	•	•	•	•		
Intense	•	•	•	•	•			
Limited	•	•	•	•				
Moderate	•	•	•					
Intense	•	•						
Very Intense	•							

### Grazing Cultivation

(c) climatic limitations (e) susceptibility to erosion

(s) soil limitations within the rooting zone (w) excess of water





 Boundary