


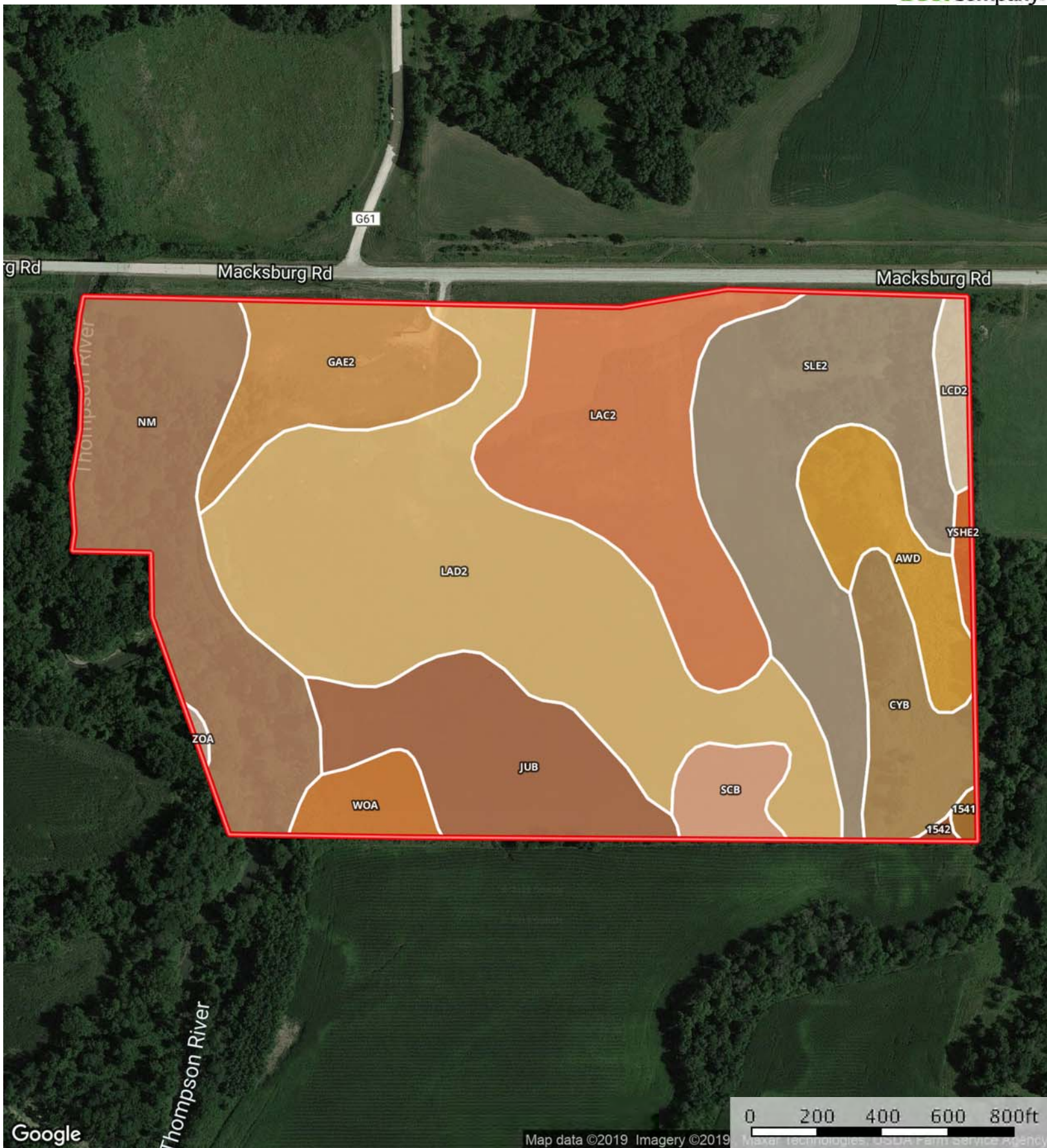
Google

Map data ©2019 Imagery ©2019

0 200 400 600 800ft  
MapRight Technologies, SOVA Farm Service Agency

 Boundary



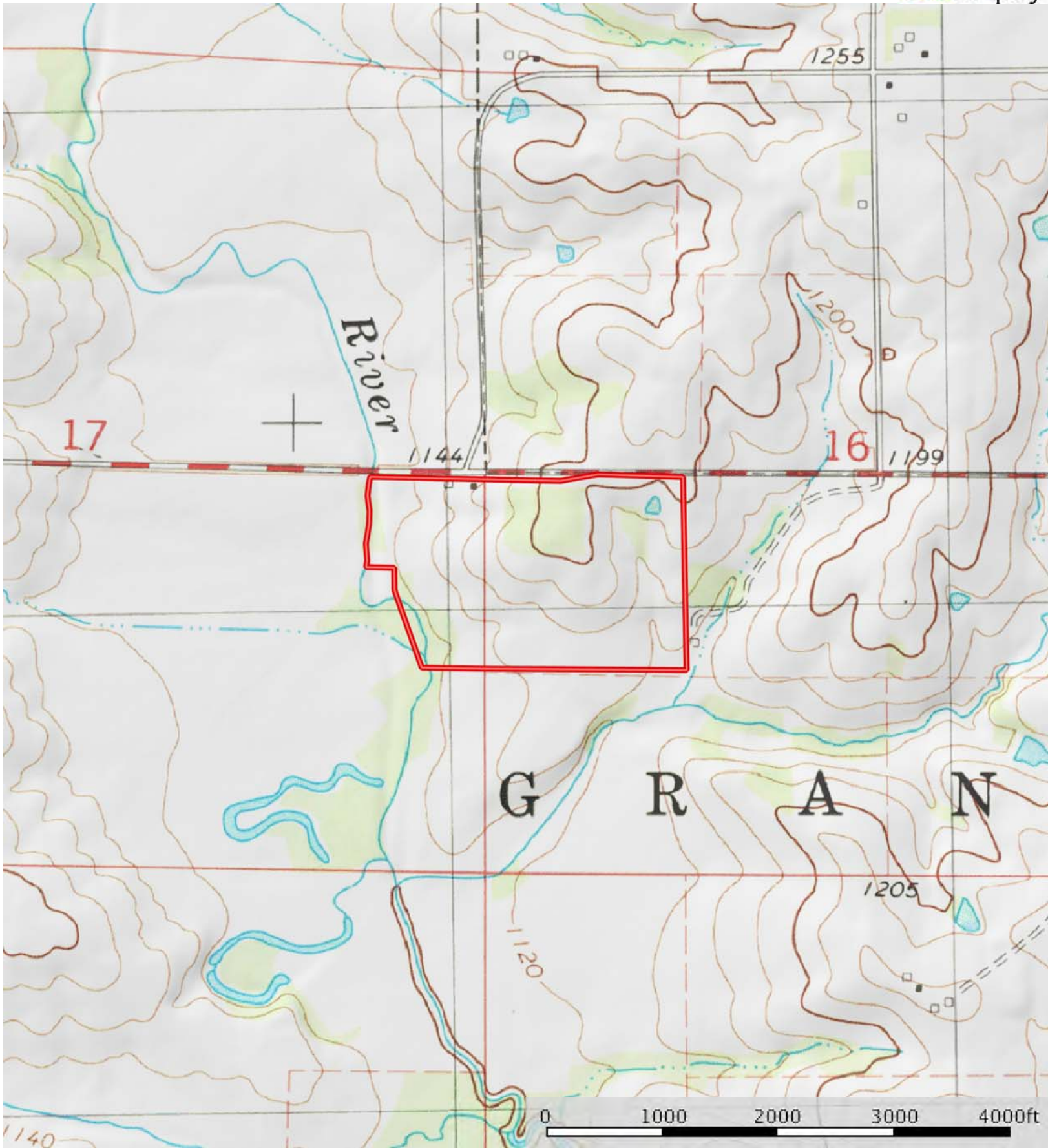


 Boundary

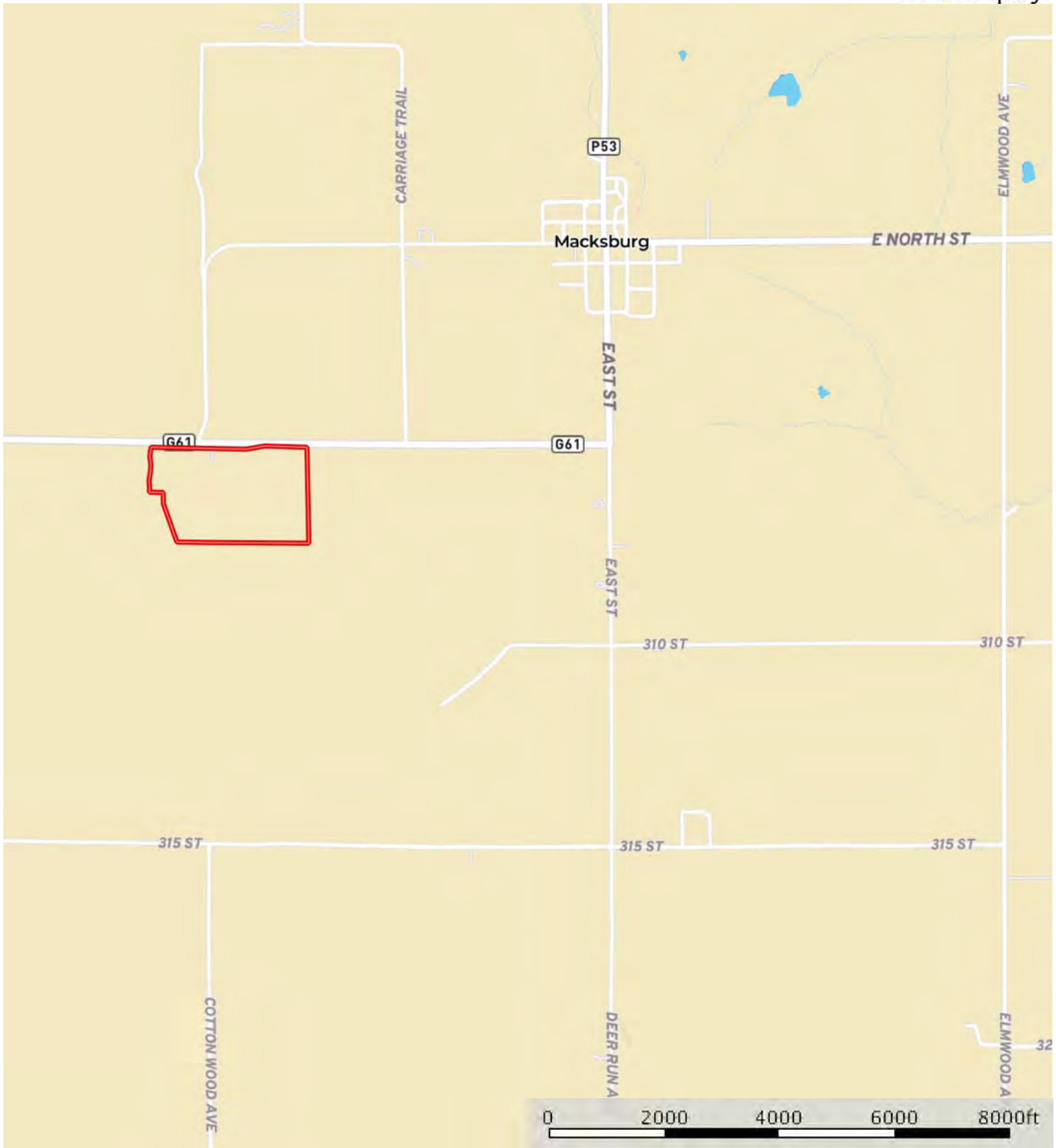
|  Boundary 55.6 ac


SOIL CODE	SOIL DESCRIPTION	ACRES	%	CSR2	CAP
CyB	Colo-Ely silty clay loams, gullied, 2 to 5 percent slopes	2.6	4.69	57	5w
YShE2	Shelby clay loam, dissected till plain, 14 to 18 percent slopes, eroded	0.3	0.5	35	4e
LcD2	Lamoni clay loam, 9 to 14 percent slopes, moderately eroded	0.7	1.21	10	4e
AwD	Arbor loam, 9 to 14 percent slopes	2.6	4.67	60	3e
1542	Quiver-Colo silty clay loams, 0 to 2 percent slopes, occasionally flooded	0.1	0.14	76	2w
SIE2	Shelby-Lamoni complex, 14 to 18 percent slopes, moderately eroded	8.2	14.78	27	6e
ScB	Sharpsburg silty clay loam, terrace, 2 to 5 percent slopes	1.2	2.13	91	2e
LaC2	Ladoga silt loam, dissected till plain, 5 to 9 percent slopes, eroded	7.3	13.08	75	3e
LaD2	Ladoga silt loam, 9 to 14 percent slopes, eroded	14.8	26.53	49	3e
1541	Quiver-Colo silty clay loams, 0 to 2 percent slopes, frequently flooded	0.1	0.24	12	5w
JuB	Judson silty clay loam, dissected till plain, 2 to 5 percent slopes	5.0	8.9	93	2e
WoA	Wiota silt loam, 0 to 2 percent slopes	1.2	2.08	100	1
GaE2	Gara loam, dissected till plain, 14 to 18 percent slopes, eroded	3.7	6.71	32	6e
Nm	Nodaway silt loam, 0 to 2 percent slopes, occasionally flooded	7.9	14.2	82	2w
ZoA	Zook silty clay loam, 0 to 2 percent slopes, occasionally flooded	0.1	0.15	67	2w
TOTALS		55.6	100%	58.89	3.46





 Boundary



 Boundary