




Google

Map data ©2019 Imagery ©2019

0 200 400 600 800ft

MapRight Technologies, USDA Farm Service Agency

 Boundary



The information contained herein was obtained from sources deemed to be reliable. MapRight Services makes no warranties or guarantees as to the completeness or accuracy thereof.

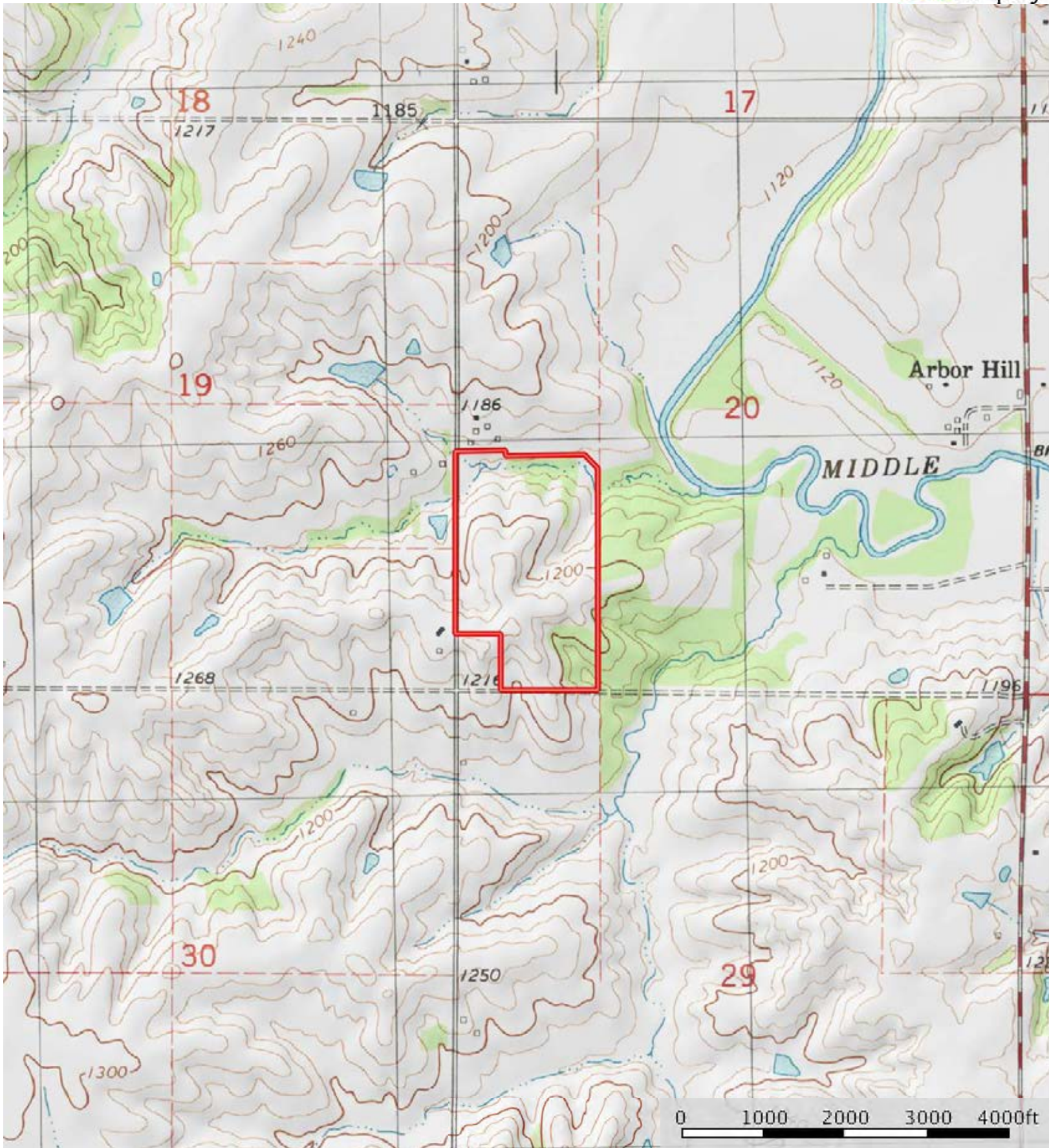


 Boundary

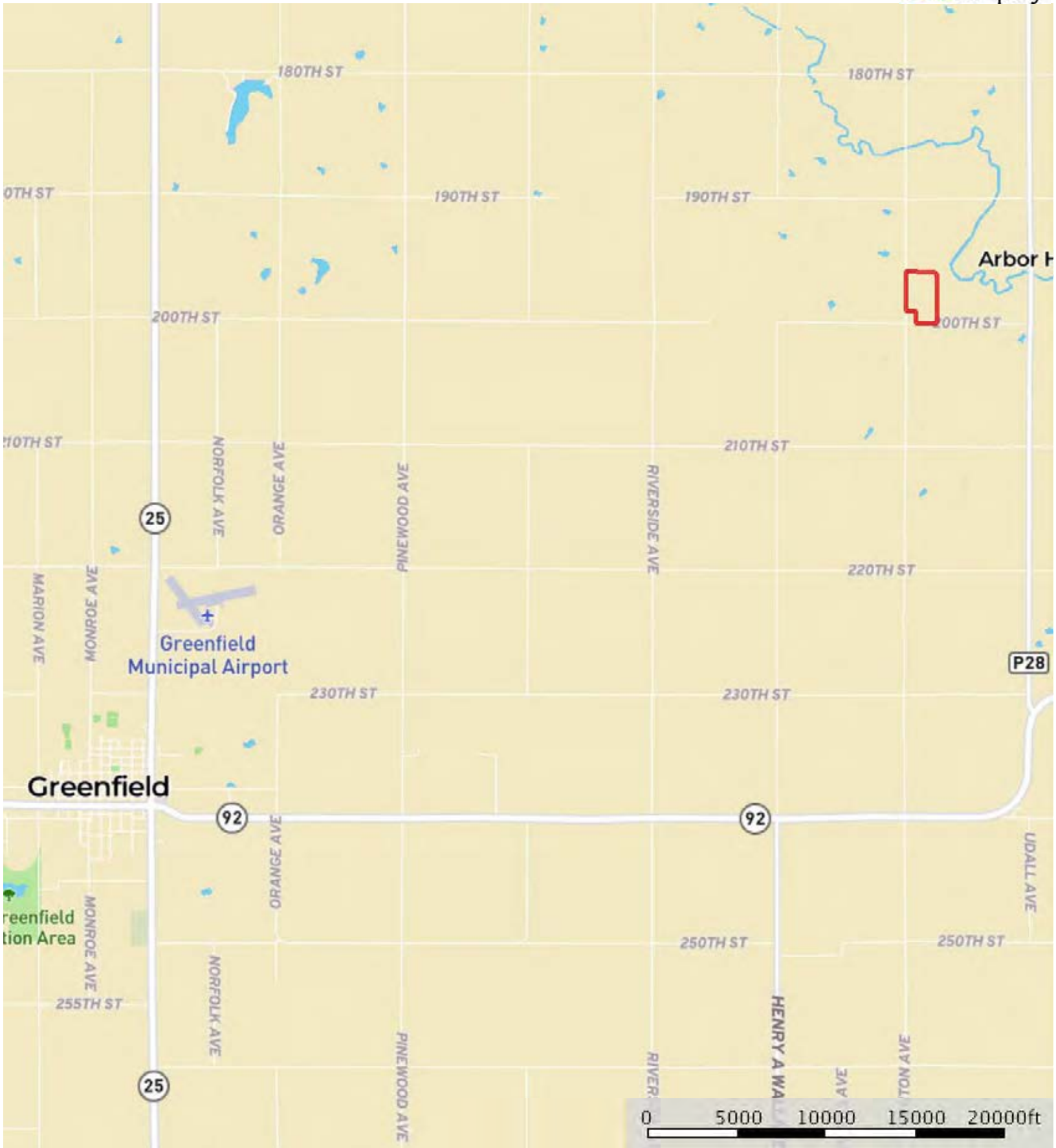
|  Boundary 60.7 ac

| SOIL CODE | SOIL DESCRIPTION | ACRES | % | CSR2 | CAP |
|-----------|--|-------|-------|-------|------|
| W | Water | 0.5 | 0.77 | - | - |
| 993F2 | Gara-Armstrong loams, 18 to 25 percent slopes, moderately eroded | 21.1 | 34.75 | 15 | 7e |
| 993E2 | Gara-Armstrong loams, 14 to 18 percent slopes, moderately eroded | 10.6 | 17.46 | 26 | 6e |
| 80D2 | Clinton silt loam, 9 to 14 percent slopes, eroded | 10.7 | 17.67 | 46 | 3e |
| 80C | Clinton silt loam, 5 to 9 percent slopes | 10.0 | 16.43 | 72 | 3e |
| 993D2 | Gara-Armstrong loams, 9 to 14 percent slopes, moderately eroded | 0.1 | 0.09 | 33 | 4e |
| 76C | Ladoga silt loam, dissected till plain, 5 to 9 percent slopes | 0.0 | 0.06 | 80 | 3e |
| 13B | Vesser-Nodaway silt loams, 2 to 5 percent slopes | 7.8 | 12.76 | 70 | 2w |
| TOTALS | | 60.7 | 100% | 38.72 | 4.76 |





 Boundary



 Boundary