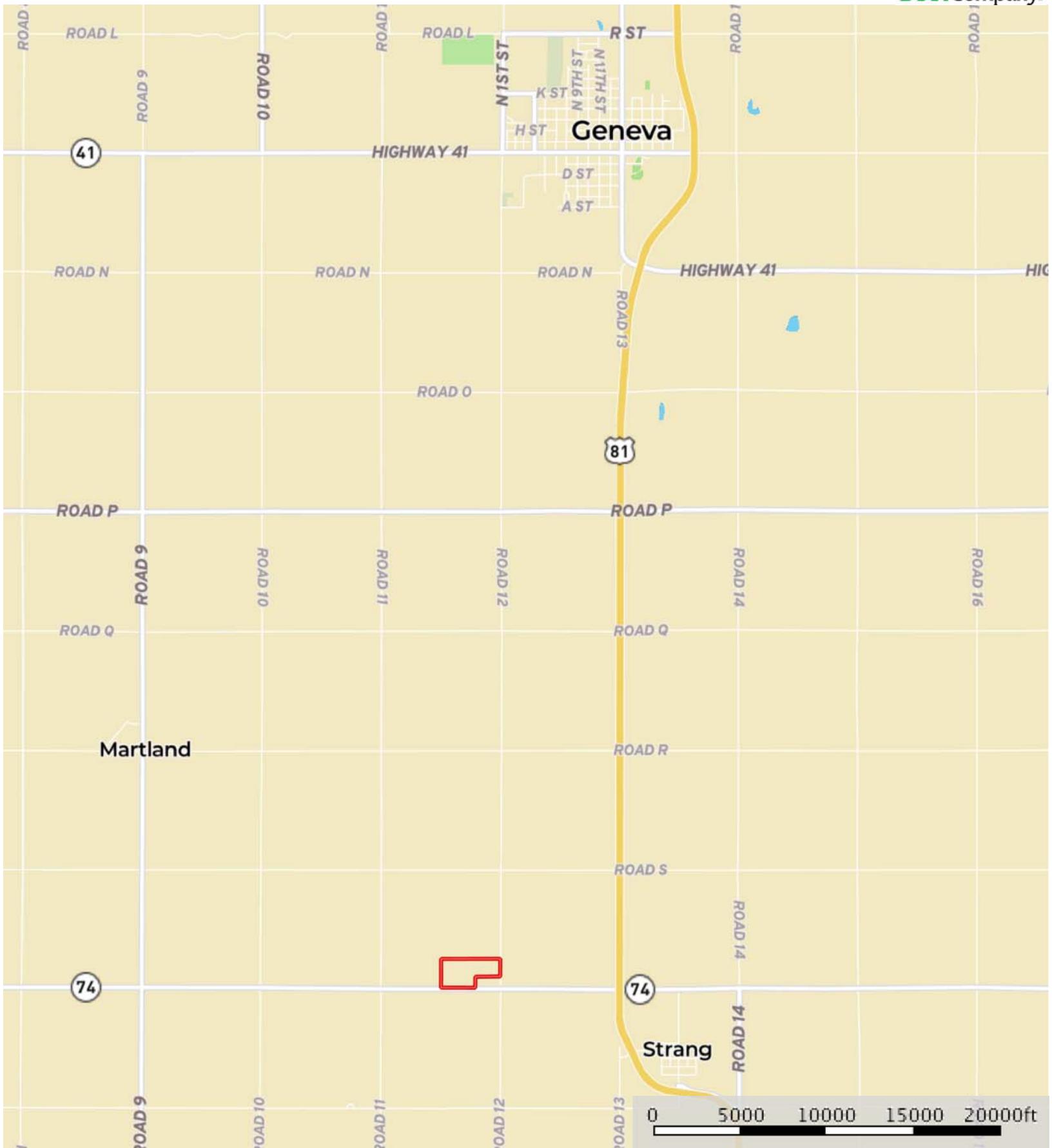


L-2000023

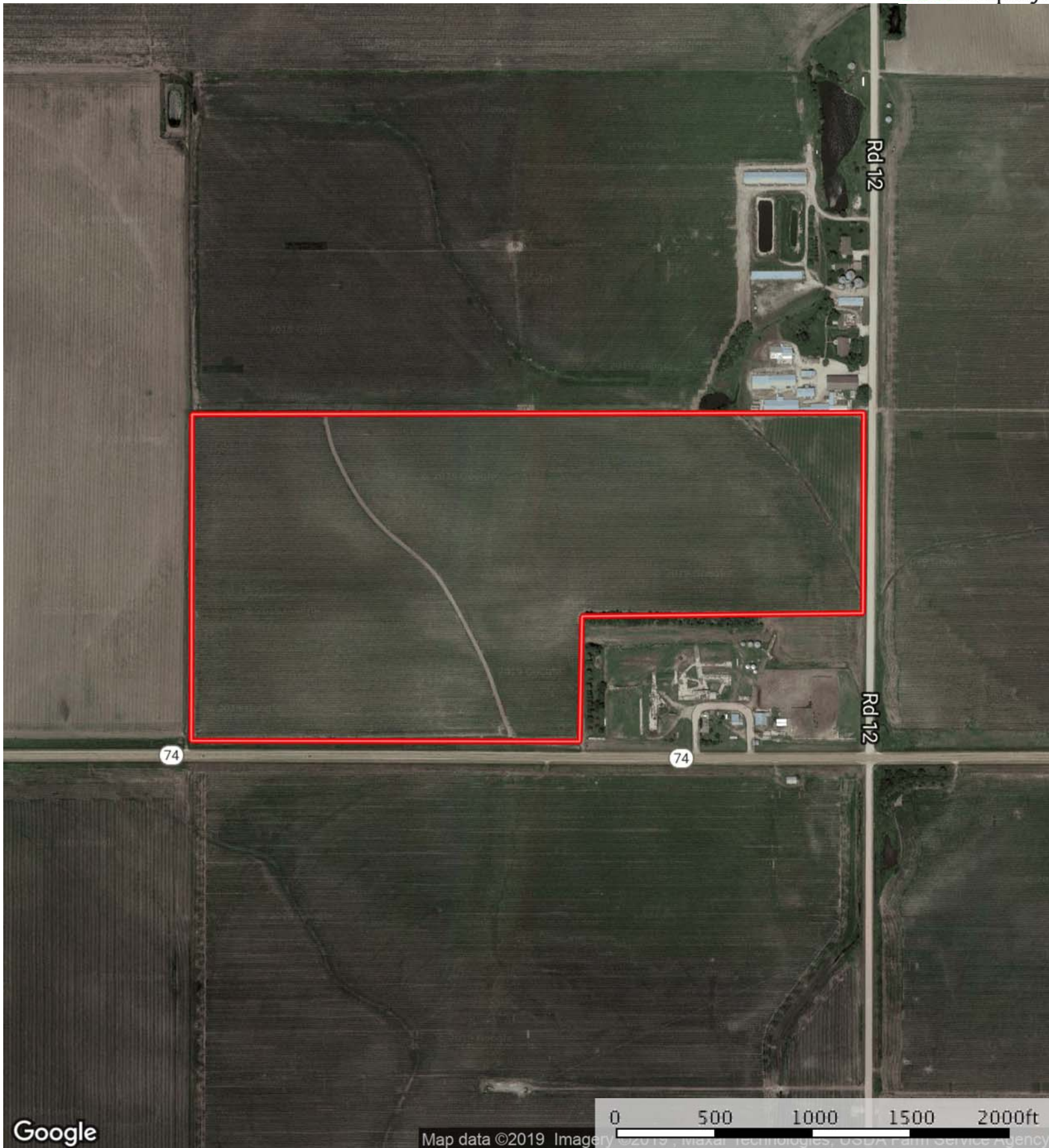
Fillmore County, Nebraska, 64.1 AC +/-



 Boundary

L-2000023


Fillmore County, Nebraska, 64.1 AC +/-




Google

Map data ©2019 Imagery ©2019, Maxar Technologies, USDA Farm Service Agency



 Boundary

 The information contained herein was obtained from sources deemed to be reliable. MapRight Services makes no warranties or guarantees as to the completeness or accuracy thereof.

L-2000023

Fillmore County, Nebraska, 64.1 AC +/-



Google

Map data ©2019 Imagery ©2019, Maxar Technologies, USDA Farm Service Agency

Boundary

The information contained herein was obtained from sources deemed to be reliable. MapRight Services makes no warranties or guarantees as to the completeness or accuracy thereof.

Boundary 64.1 ac

SOIL CODE	SOIL DESCRIPTION	ACRES	%	CAP
3831	Crete silty clay loam, 3 to 7 percent slopes, eroded	30.0	46.84	3e
3825	Crete silt loam, 1 to 3 percent slopes	22.2	34.65	2e
3820	Butler silt loam, 0 to 1 percent slopes	7.5	11.68	2w
3829	Crete silty clay loam, 1 to 3 percent slopes	0.6	0.89	2e
3824	Crete silt loam, 0 to 1 percent slopes	3.8	5.95	2s
TOTALS		64.1	100%	2.47

Capability Legend

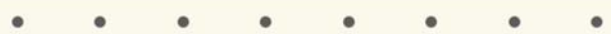
Increased Limitations and Hazards

Decreased Adaptability and Freedom of Choice Users

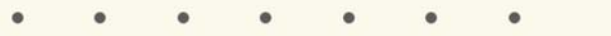
Land, Capability Class(non-irrigated)



'Wild Life'



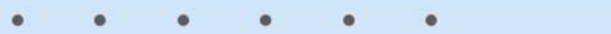
Forestry



Limited



Moderate



Intense



Limited



Moderate



Intense



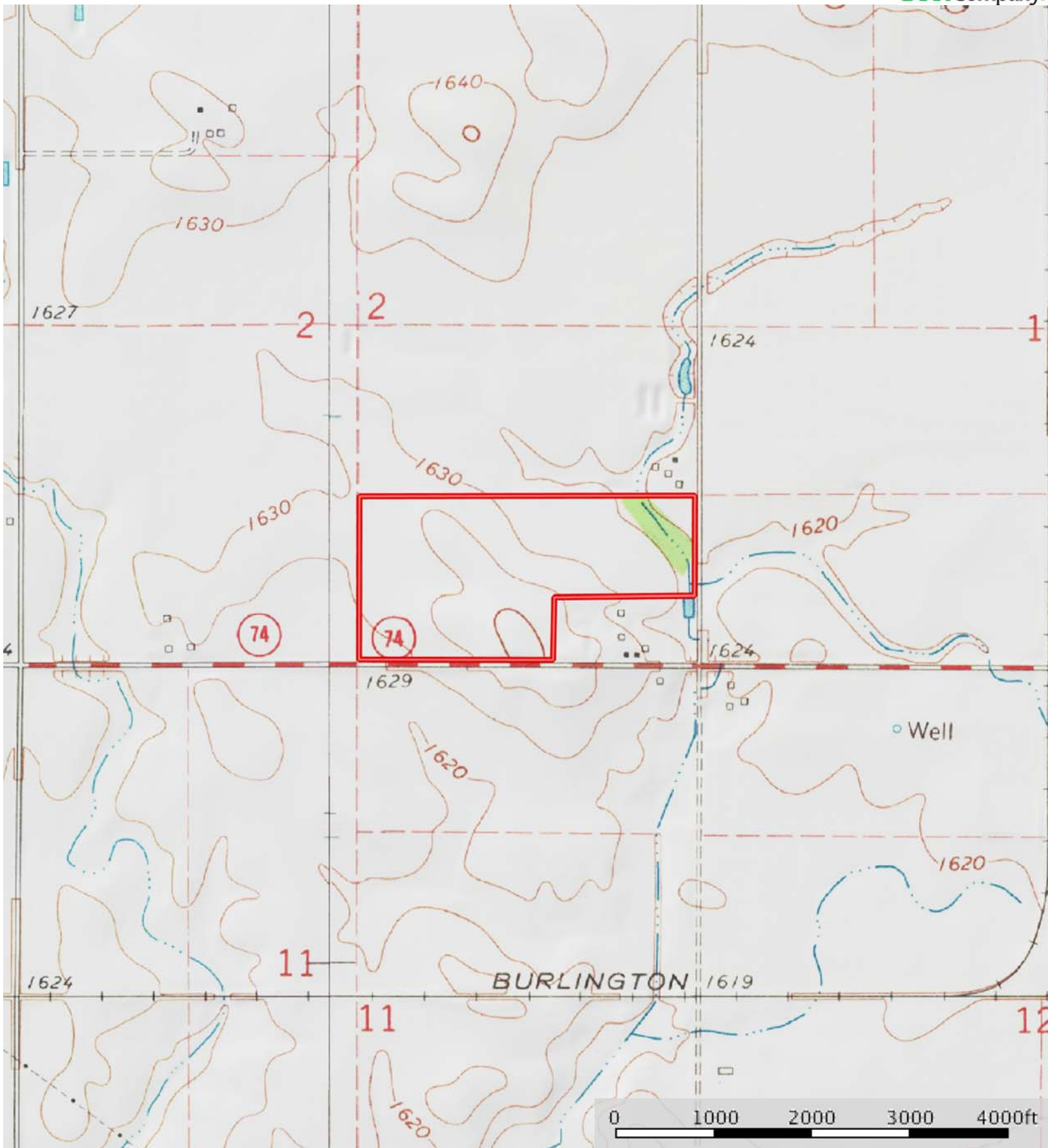
Very Intense




Grazing Cultivation

(c) climatic limitations (e) susceptibility to erosion

(s) soil limitations within the rooting zone (w) excess of water



 Boundary

