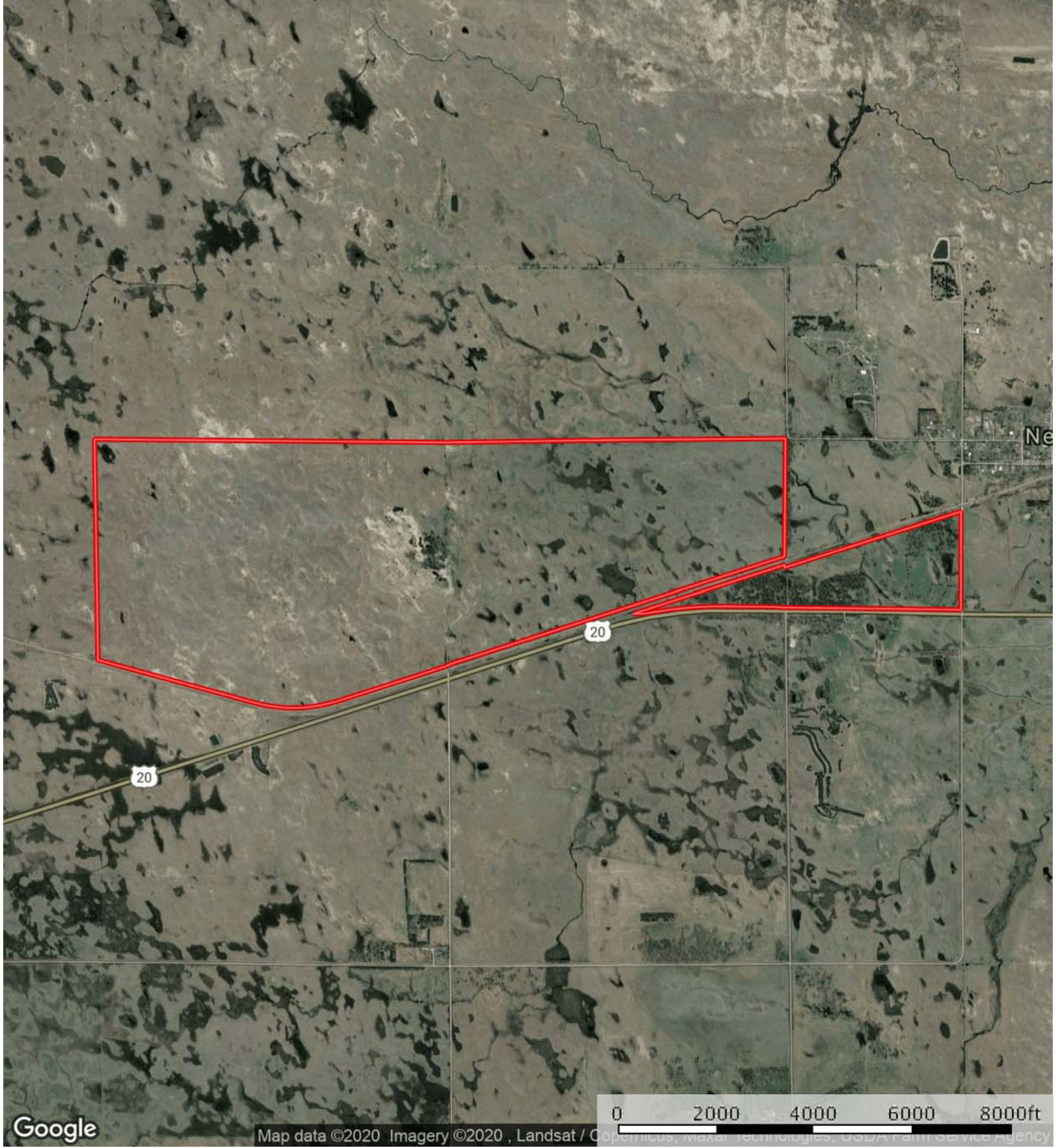
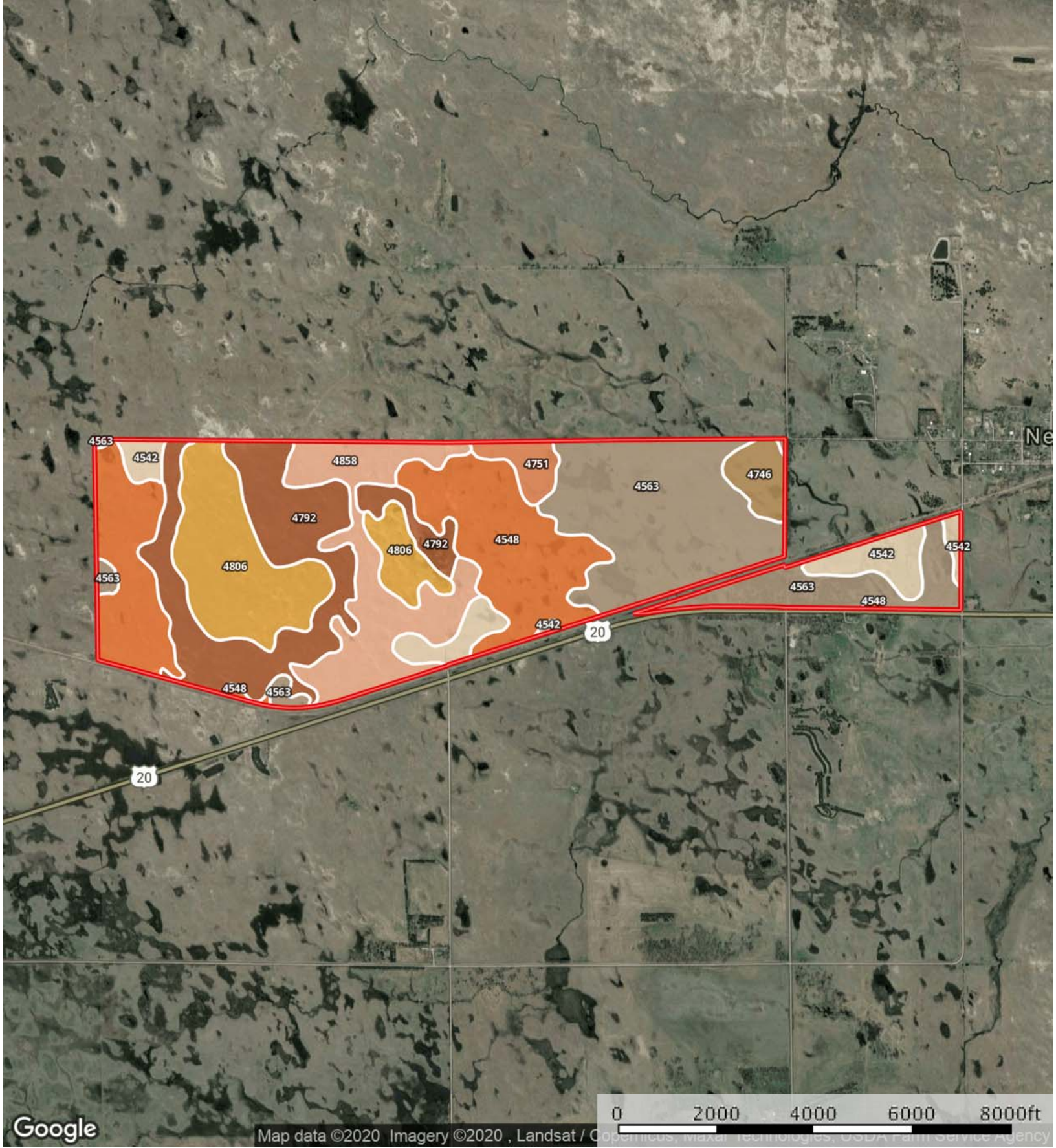


 Boundary




 Boundary



Google

Map data ©2020 Imagery ©2020, Landsat / Copernicus, Maxar, Technologies, USDA Farm Service Agency



 Boundary

|  All Polygons 833.2 ac

SOIL CODE	SOIL DESCRIPTION	ACRES	%	CAP
4746	Tryon loamy fine sand, 0 to 3 percent slopes	19.4	2.33	5w
4548	Els-lpage-Tryon loamy sands, 0 to 6 percent slopes	173.7	20.84	4w
4542	Els-lpage complex, 0 to 3 percent slopes	53.8	6.46	6w
4806	Valentine fine sand, rolling, 9 to 24 percent slopes, moist	115.4	13.85	6e
4792	Valentine fine sand, 3 to 9 percent slopes, moist	143.9	17.27	6e
4563	Els-Tryon complex, 0 to 3 percent slopes	208.3	25.0	4w
4858	Valentine-Els complex, moist, 0 to 9 percent slopes	102.7	12.33	6e
4751	Tryon loamy fine sand, frequently ponded, 0 to 3 percent slopes	16.0	1.92	5w
TOTALS		833.2	100%	5.04

|  Boundary 754.8 ac

SOIL CODE	SOIL DESCRIPTION	ACRES	%	CAP
4746	Tryon loamy fine sand, 0 to 3 percent slopes	19.4	2.57	5w
4548	Els-lpage-Tryon loamy sands, 0 to 6 percent slopes	172.8	22.89	4w
4542	Els-lpage complex, 0 to 3 percent slopes	26.2	3.47	6w
4806	Valentine fine sand, rolling, 9 to 24 percent slopes, moist	115.4	15.29	6e
4792	Valentine fine sand, 3 to 9 percent slopes, moist	143.9	19.06	6e
4563	Els-Tryon complex, 0 to 3 percent slopes	158.4	20.99	4w
4858	Valentine-Els complex, moist, 0 to 9 percent slopes	102.7	13.61	6e
4751	Tryon loamy fine sand, frequently ponded, 0 to 3 percent slopes	16.0	2.12	5w
TOTALS		754.8	100%	5.08

|  Boundary 78.4 ac









SOIL CODE	SOIL DESCRIPTION	ACRES	%	CAP
4548	Els-lpage-Tryon loamy sands, 0 to 6 percent slopes	0.9	1.09	4w
4542	Els-lpage complex, 0 to 3 percent slopes	27.7	35.29	6w
4563	Els-Tryon complex, 0 to 3 percent slopes	49.9	63.62	4w
TOTALS		78.4	100%	4.71

Capability Legend

Increased Limitations and Hazards

Decreased Adaptability and Freedom of Choice Users

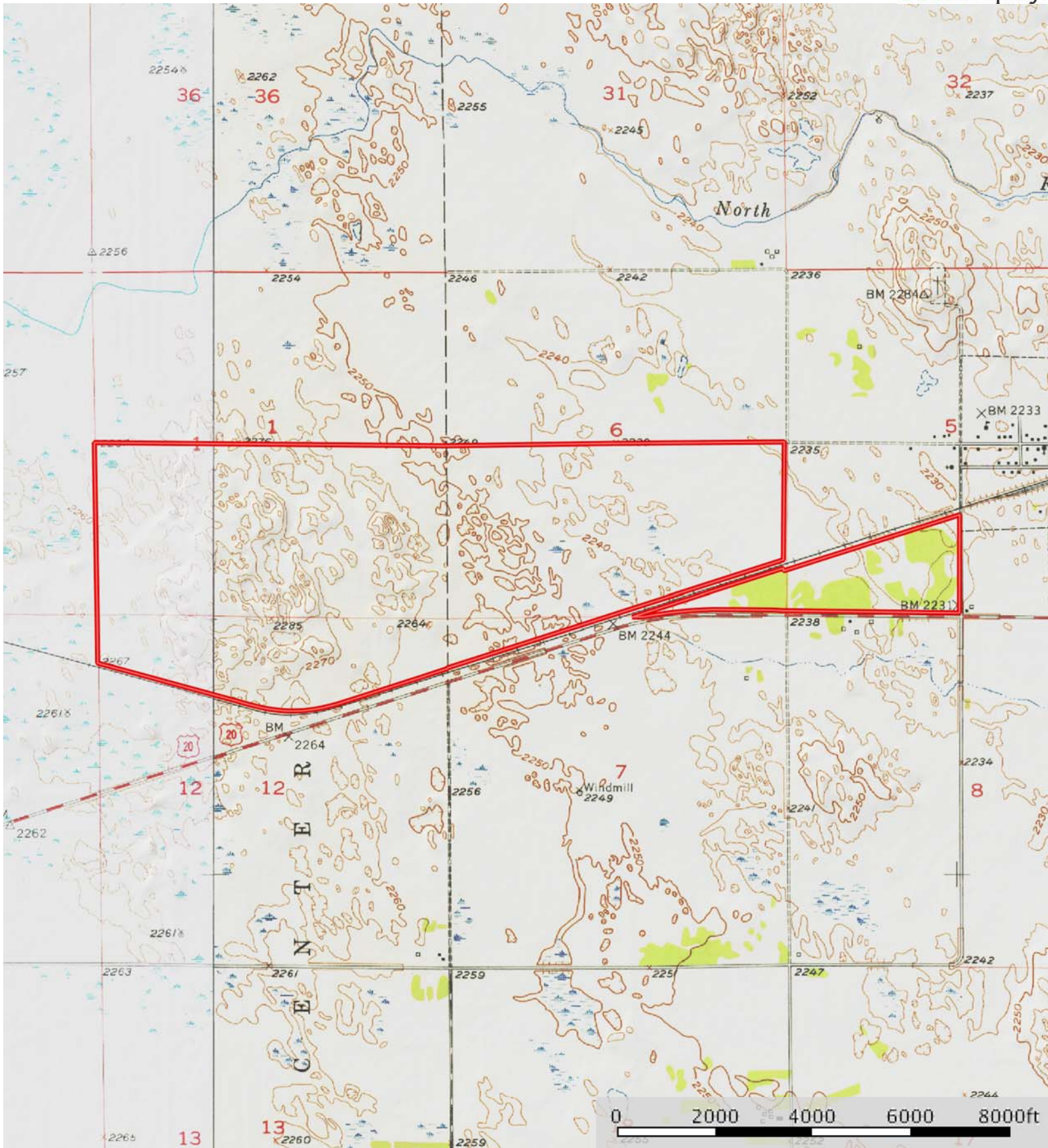
Land, Capability

								
	1	2	3	4	5	6	7	8
'Wild Life'	•	•	•	•	•	•	•	•
Forestry	•	•	•	•	•	•	•	
Limited	•	•	•	•	•	•	•	
Moderate	•	•	•	•	•	•		
Intense	•	•	•	•	•			
Limited	•	•	•	•				
Moderate	•	•	•					
Intense	•	•						
Very Intense	•							

Grazing Cultivation

(c) climatic limitations (e) susceptibility to erosion

(s) soil limitations within the rooting zone (w) excess of water



Boundary