

L-20002970

Trail County, North Dakota, 78.6 AC +/-



Boundary



 Boundary



 Boundary

|  Boundary 78.6 ac









SOIL CODE	SOIL DESCRIPTION	ACRES	%	CPI	CAP
I229A	Fargo silty clay, 0 to 1 percent slopes	78.6	100.0	86	2w
TOTALS		78.6	100%	86.0	2.0

Capability Legend

Increased Limitations and Hazards

Decreased Adaptability and Freedom of Choice Users

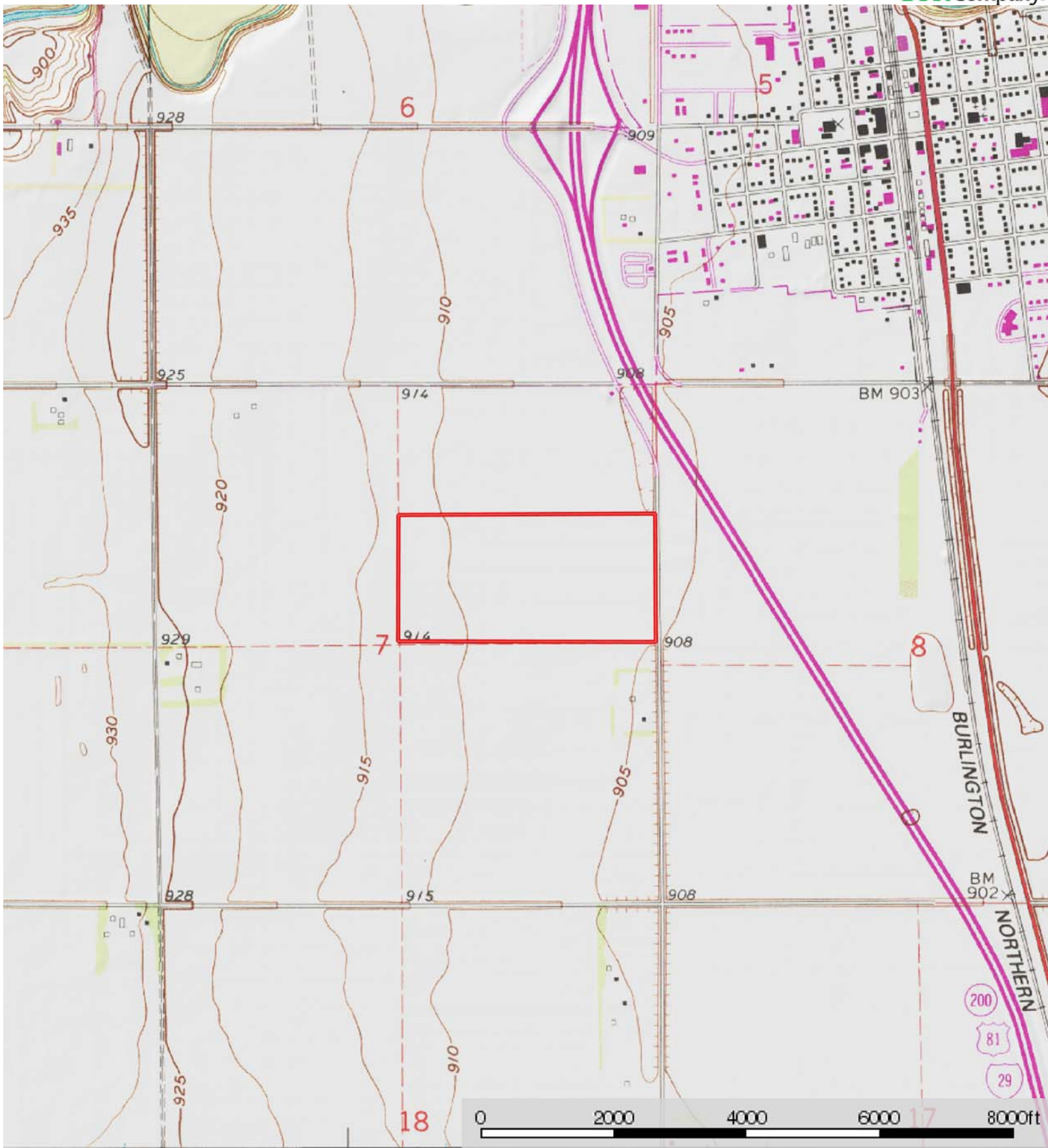
Land, Capability


								
	1	2	3	4	5	6	7	8
'Wild Life'	•	•	•	•	•	•	•	•
Forestry	•	•	•	•	•	•	•	
Limited	•	•	•	•	•	•	•	
Moderate	•	•	•	•	•	•		
Intense	•	•	•	•	•			
Limited	•	•	•	•				
Moderate	•	•	•					
Intense	•	•						
Very Intense	•							

Grazing Cultivation

(c) climatic limitations (e) susceptibility to erosion

(s) soil limitations within the rooting zone (w) excess of water



 Boundary