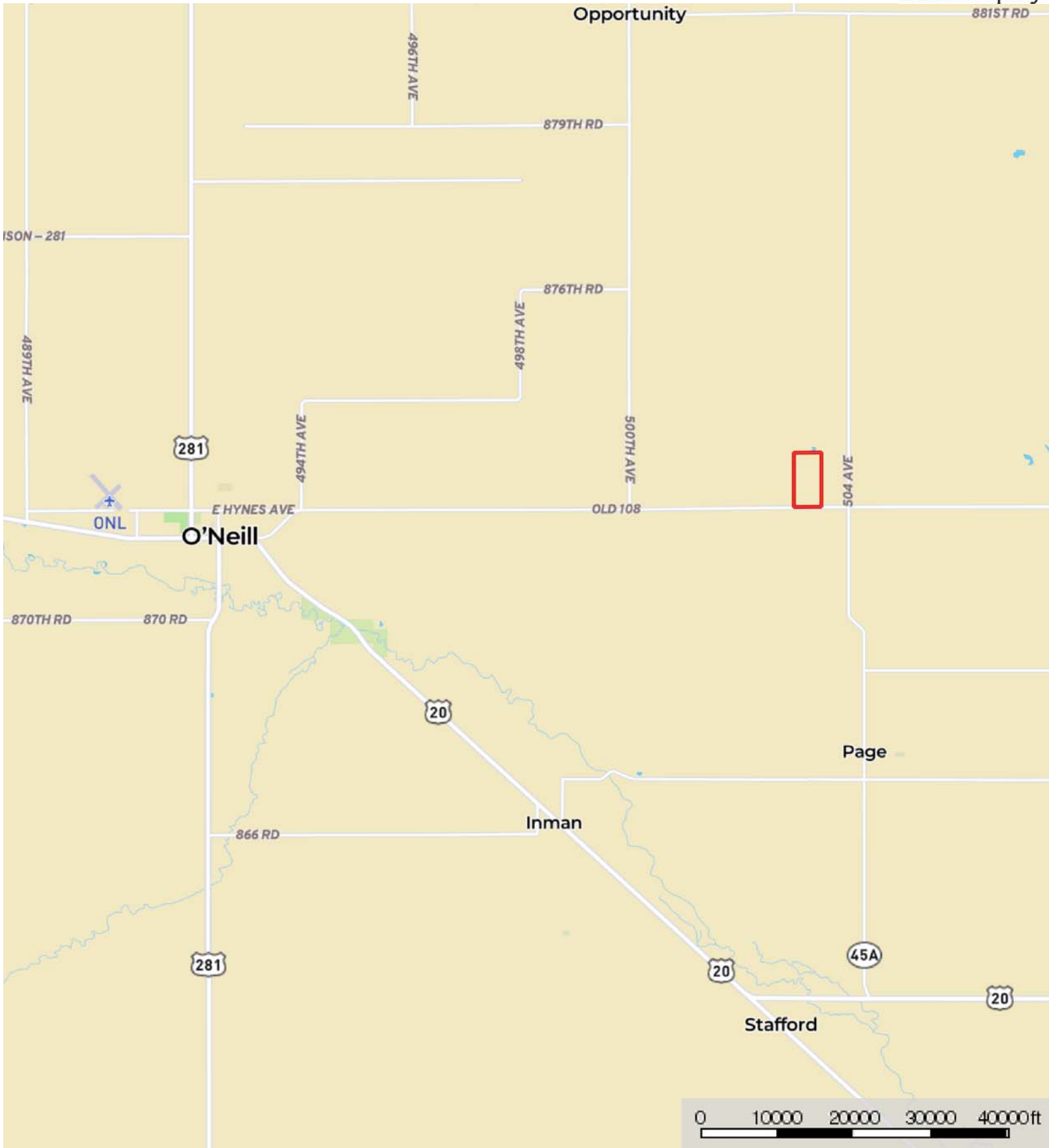



L-2000573

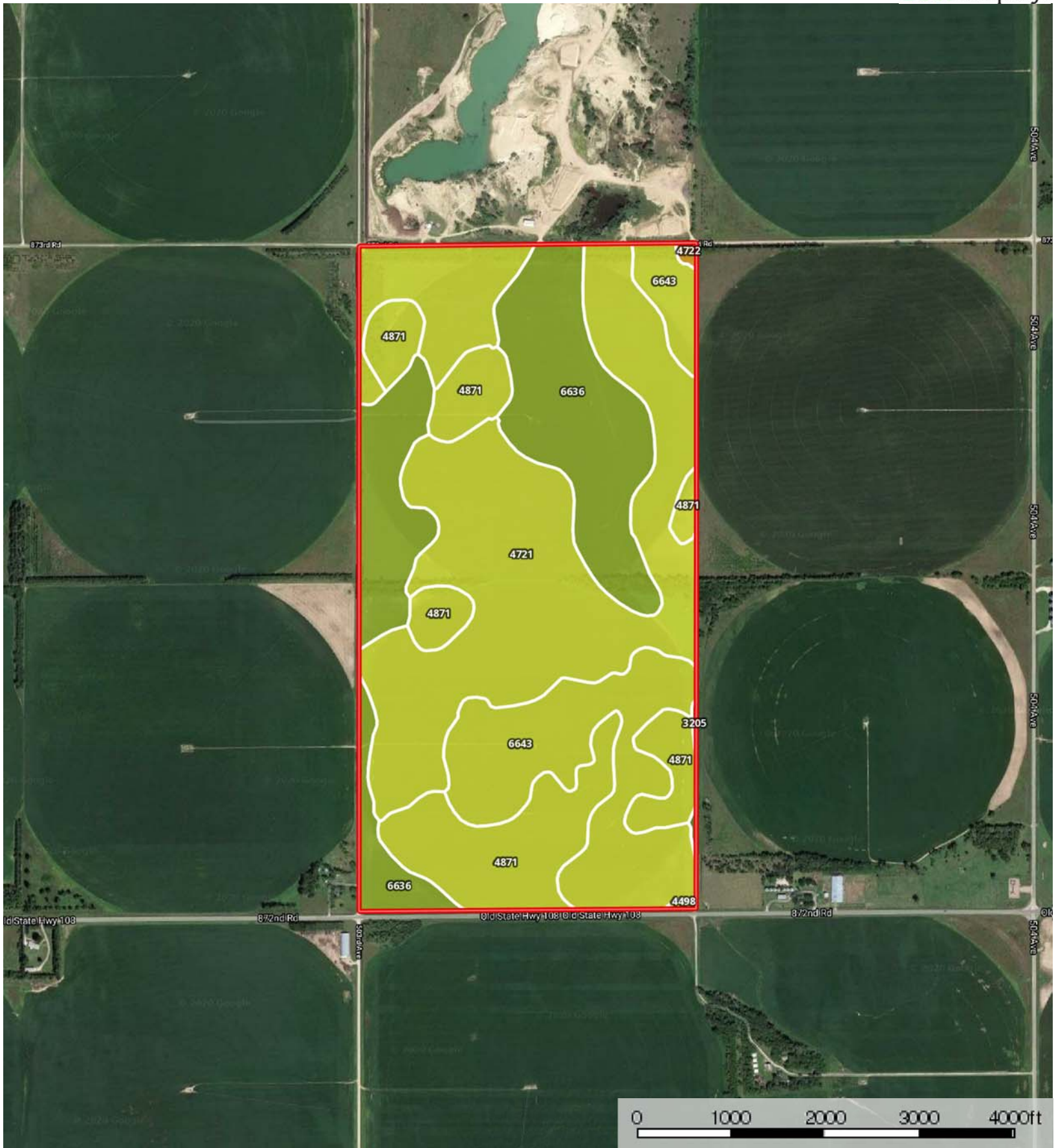
Holt County, Nebraska, 319.1 AC +/-



 Boundary



 Boundary



 Boundary

Boundary 319.1 ac

| SOIL CODE | SOIL DESCRIPTION  | ACRES | %     | CAP  |
|-----------|---|-------|-------|------|
| 4721      | Pivot loamy sand, 0 to 3 percent slopes                       | 129.1 | 40.46 | 4e   |
| 6636      | Boelus loamy fine sand, 0 to 2 percent slopes                 | 75.5  | 23.67 | 3e   |
| 4498      | Dunday loamy sand, 0 to 3 percent slopes                      | 0.3   | 0.1   | 4e   |
| 4871      | Valentine-Dunday loamy fine sands, 0 to 3 percent slopes      | 56.5  | 17.7  | 4e   |
| 3205      | Josburg fine sandy loam, 0 to 2 percent slopes                | 0.6   | 0.18  | 2e   |
| 4722      | Pivot loamy sand, 3 to 9 percent slopes                       | 0.6   | 0.19  | 6e   |
| 6643      | Boelus loamy sand, gravelly substratum, 0 to 3 percent slopes | 56.5  | 17.71 | 4e   |
| TOTALS    |   | 319.1 | 100%  | 3.76 |

### Capability Legend

Increased Limitations and Hazards

Decreased Adaptability and Freedom of Choice Users

Land, Capability



|              | 1 | 2 | 3 | 4 | 5 | 6 | 7 | 8 |
|--------------|---|---|---|---|---|---|---|---|
| 'Wild Life'  | • | • | • | • | • | • | • | • |
| Forestry     | • | • | • | • | • | • | • |   |
| Limited      | • | • | • | • | • | • | • |   |
| Moderate     | • | • | • | • | • | • |   |   |
| Intense      | • | • | • | • | • |   |   |   |
| Limited      | • | • | • | • |   |   |   |   |
| Moderate     | • | • | • |   |   |   |   |   |
| Intense      | • | • |   |   |   |   |   |   |
| Very Intense | • |   |   |   |   |   |   |   |

### Grazing Cultivation

(c) climatic limitations (e) susceptibility to erosion

(s) soil limitations within the rooting zone (w) excess of water

