

L-2000630

Grand Forks County, North Dakota, 296.8 AC +/-



Tract 1

L-2000630

Grand Forks County, North Dakota, 307 AC +/-



Tract 1



 Tract 1

SOIL CODE	SOIL DESCRIPTION	ACRES	%	CPI	CAP
I468A	Divide loam, 0 to 2 percent slopes	16.3	10.22	59	2s
I201A	Glyndon silt loam, 0 to 2 percent slopes	22.6	14.2	92	2e
I199A	Antler-Mustinka silt loams, 0 to 2 percent slopes	74.0	46.49	83	2e
I400A	Gilby loam, 0 to 2 percent slopes	46.3	29.09	78	2e
TOTALS		159.1	100%	80.37	2.0

Capability Legend

Increased Limitations and Hazards

Decreased Adaptability and Freedom of Choice Users

Land, Capability

	1	2	3	4	5	6	7	8
'Wild Life'	•	•	•	•	•	•	•	•
Forestry	•	•	•	•	•	•	•	
Limited	•	•	•	•	•	•	•	
Moderate	•	•	•	•	•	•		
Intense	•	•	•	•	•			
Limited	•	•	•	•				
Moderate	•	•	•					
Intense	•	•						
Very Intense	•							

Grazing Cultivation

(c) climatic limitations (e) susceptibility to erosion

(s) soil limitations within the rooting zone (w) excess of water





Tract 2

Tract 2 137.7 ac

SOIL CODE	SOIL DESCRIPTION	ACRES	%	CPI	CAP
I312A	Wyndmere fine sandy loam, 0 to 2 percent slopes	89.2	64.78	66	3e
I468A	Divide loam, 0 to 2 percent slopes	19.5	14.17	59	2s
I309A	Arveson loam, 0 to 1 percent slopes	17.6	12.75	61	2w
I201A	Glyndon silt loam, 0 to 2 percent slopes	8.6	6.28	92	2e
I400A	Gilby loam, 0 to 2 percent slopes	2.8	2.03	78	2e
TOTALS		137.7	100%	66.25	2.65

Capability Legend

Increased Limitations and Hazards

Decreased Adaptability and Freedom of Choice Users

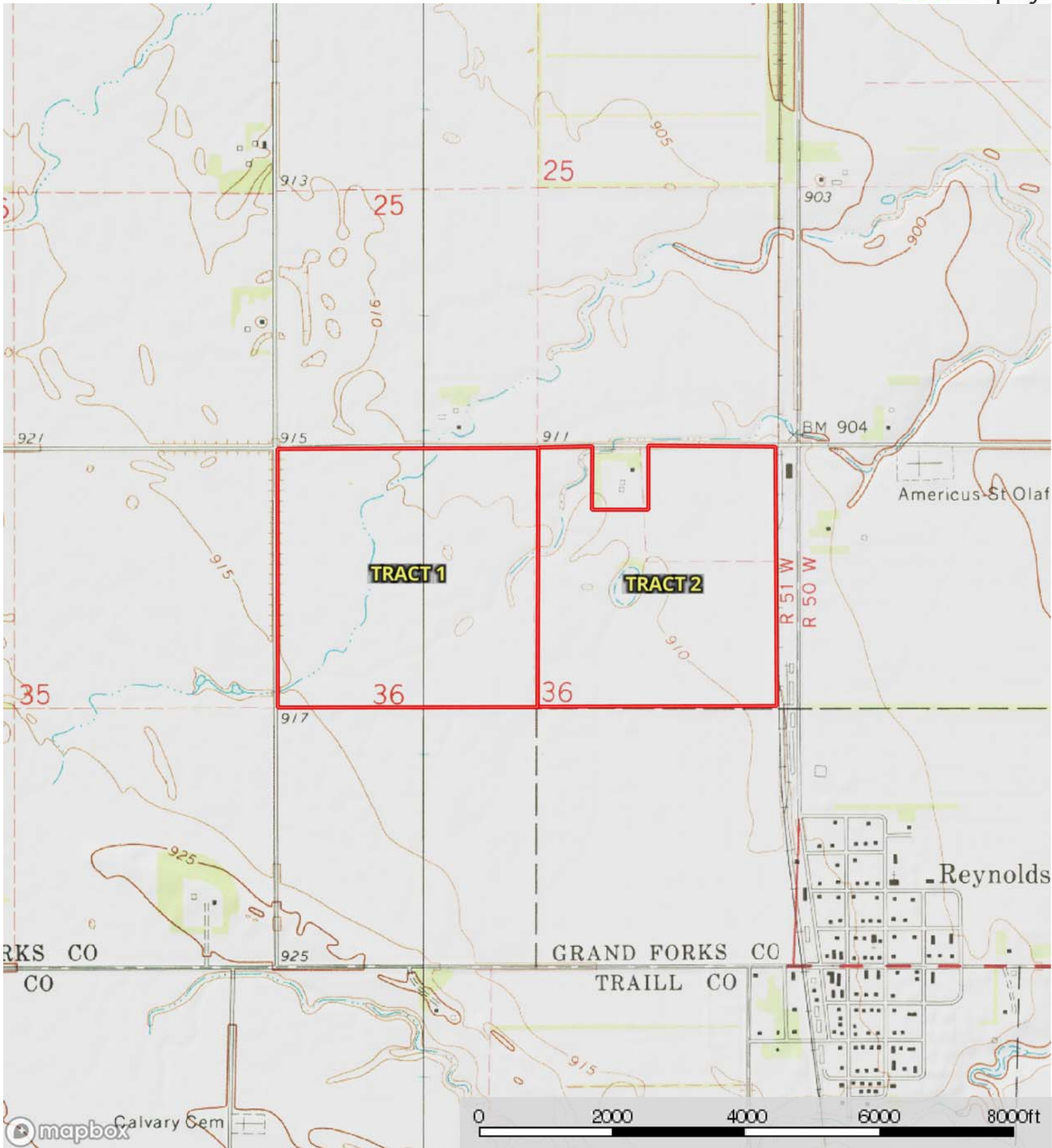
Land, Capability

	1	2	3	4	5	6	7	8
'Wild Life'	•	•	•	•	•	•	•	•
Forestry	•	•	•	•	•	•	•	
Limited	•	•	•	•	•	•	•	
Moderate	•	•	•	•	•	•		
Intense	•	•	•	•	•			
Limited	•	•	•	•				
Moderate	•	•	•					
Intense	•	•						
Very Intense	•							

Grazing Cultivation

(c) climatic limitations (e) susceptibility to erosion

(s) soil limitations within the rooting zone (w) excess of water



Tract 1