


 Boundary



 Boundary

|  Boundary 87.0 ac

| SOIL CODE | SOIL DESCRIPTION | ACRES | % | CPI | CAP |
|-----------|---------------------------------------------------------------------------|-------|-------|-------|------|
| I14B | Fairdale silt loam, 1 to 6 percent slopes, occasionally flooded | 28.2 | 32.42 | 74 | 2e |
| I16F | Fluvaquents,frequently flooded-Hapludolls complex, 0 to 30 percent slopes | 42.2 | 48.46 | 20 | 6w |
| IWa | Water | 6.6 | 7.55 | 0 | - |
| I123A | Bearden-Colvin silty clay loams, 0 to 2 percent slopes | 5.2 | 5.99 | 91 | 2e |
| I666A | Colvin-Perella silty clay loams, 0 to 1 percent slopes | 0.6 | 0.72 | 92 | 2w |
| I49A | Rauville silty clay loam, 0 to 2 percent slopes, frequently flooded | 4.2 | 4.86 | 20 | 6w |
| TOTALS | | 87.0 | 100% | 40.77 | 3.98 |

Capability Legend

Increased Limitations and Hazards

Decreased Adaptability and Freedom of Choice Users

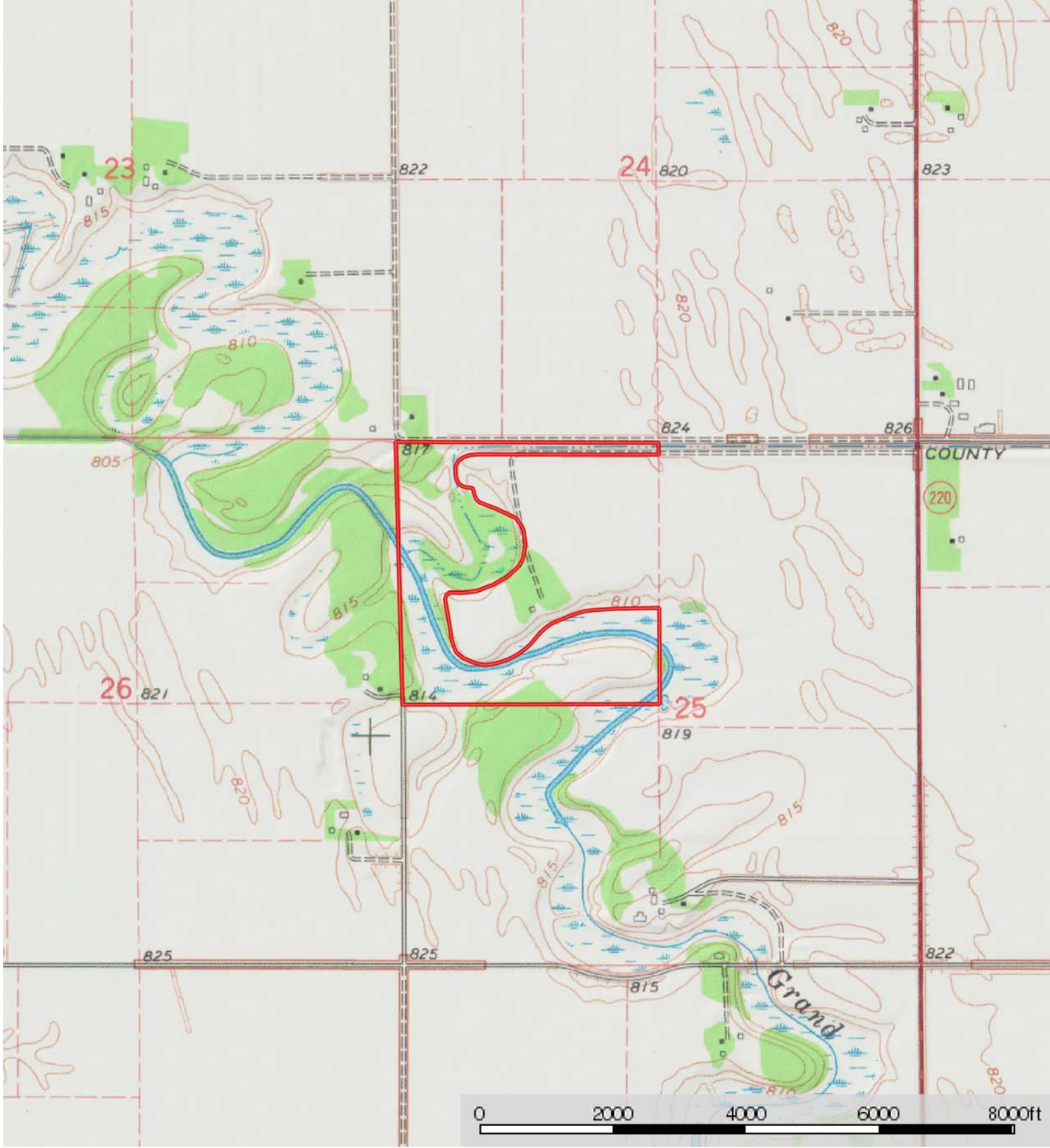
Land, Capability

| | 1 | 2 | 3 | 4 | 5 | 6 | 7 | 8 |
|--------------|---|---|---|---|---|---|---|---|
| 'Wild Life' | • | • | • | • | • | • | • | • |
| Forestry | • | • | • | • | • | • | • | |
| Limited | • | • | • | • | • | • | • | |
| Moderate | • | • | • | • | • | • | | |
| Intense | • | • | • | • | • | | | |
| Limited | • | • | • | • | | | | |
| Moderate | • | • | • | | | | | |
| Intense | • | • | | | | | | |
| Very Intense | • | | | | | | | |

Grazing Cultivation


(c) climatic limitations (e) susceptibility to erosion

(s) soil limitations within the rooting zone (w) excess of water



 Boundary



 Boundary