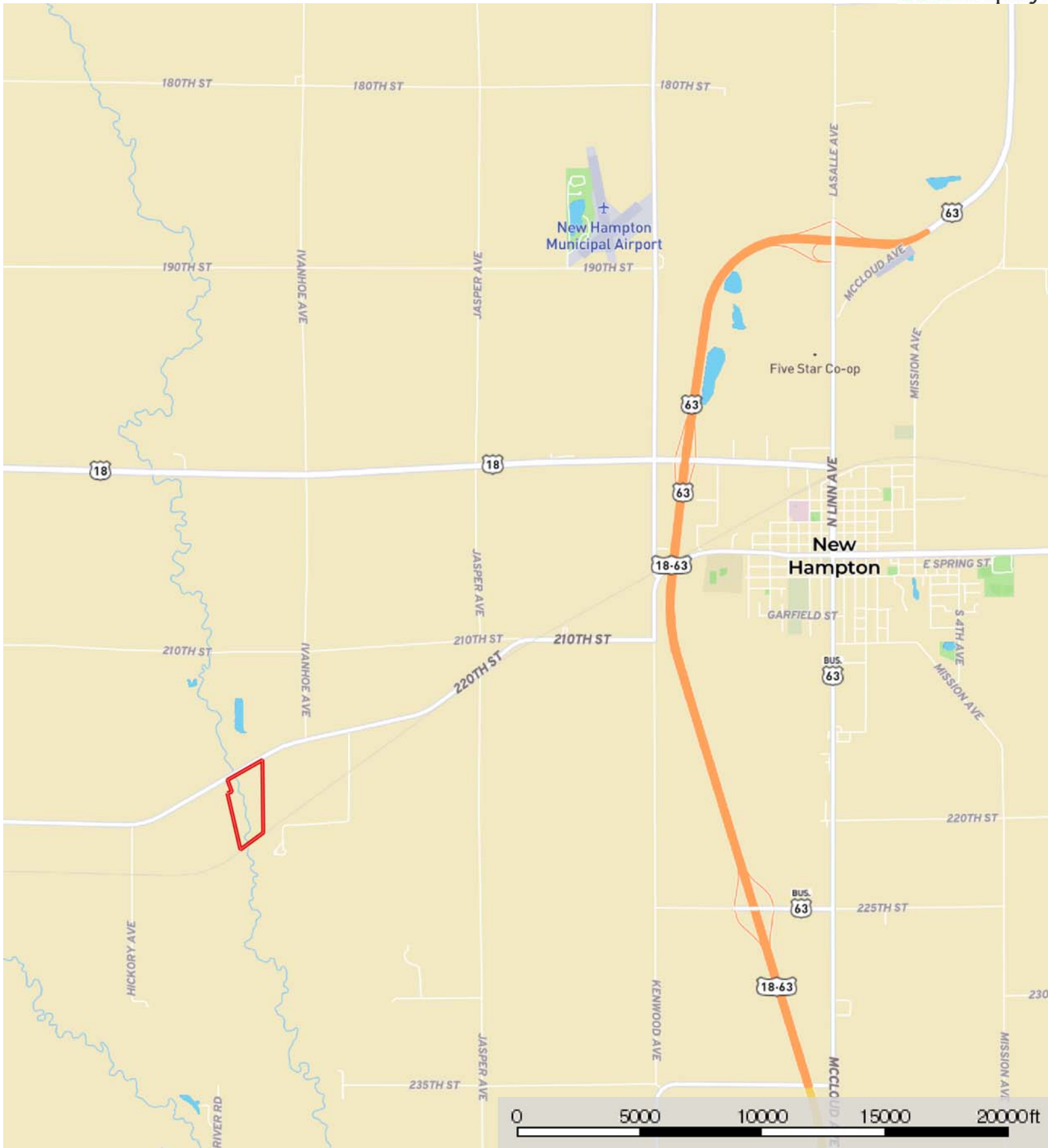

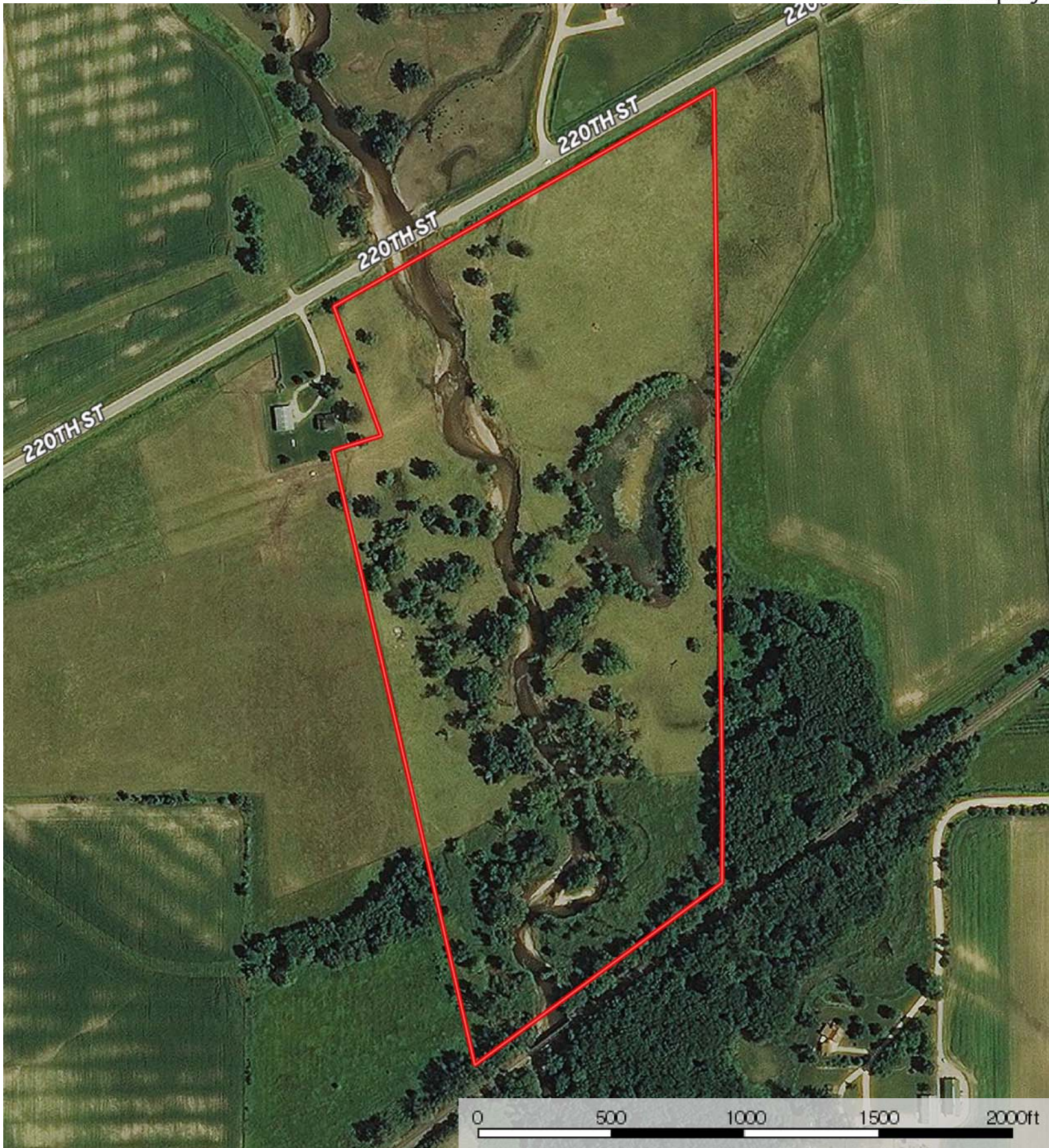



L-2100110

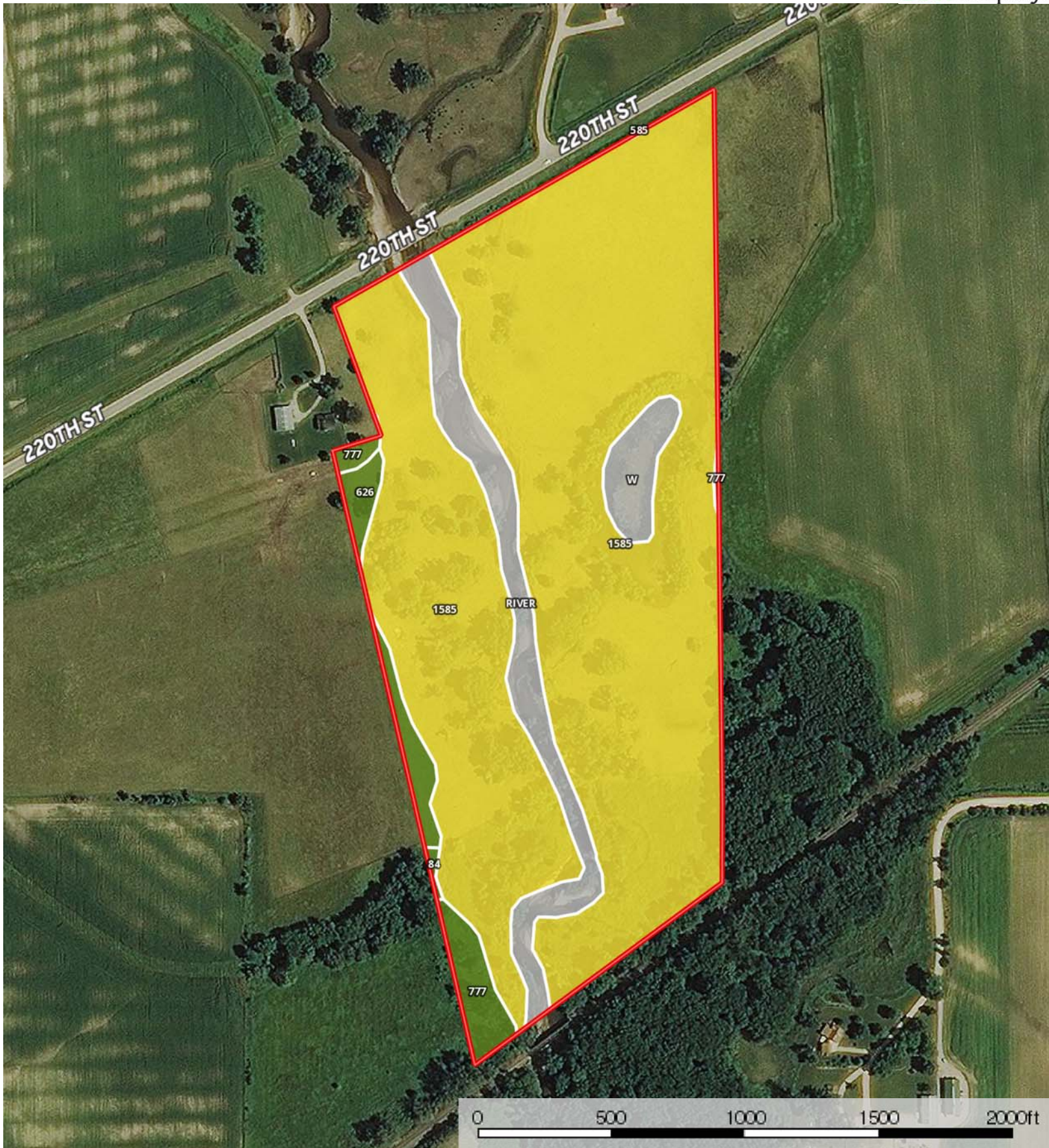
Chickasaw County, Iowa, 46.1 AC +/-




 Boundary



 Boundary



 Boundary

Boundary 46.1 ac

SOIL CODE	SOIL DESCRIPTION	ACRES	%	CSR2	CAP
84	Clyde clay loam, 0 to 3 percent slopes	0.1	0.15	88	2w
777	Wapsie loam, 0 to 2 percent slopes	1.2	2.54	55	2s
1585	Coland-Spillville complex, channeled, 0 to 2 percent slopes	38.8	84.11	17	5w
W	Water	1.1	2.43	-	-
585	Coland-Spillville complex, 0 to 2 percent slopes	0.0	0.02	78	2w
626	Hayfield loam, 0 to 2 percent slopes, rarely flooded	1.1	2.4	53	2s
RIVER	Water, rivers and streams	3.9	8.35	-	-
TOTALS		46.1	100%	17.12	4.31

Capability Legend

Increased Limitations and Hazards

Decreased Adaptability and Freedom of Choice Users

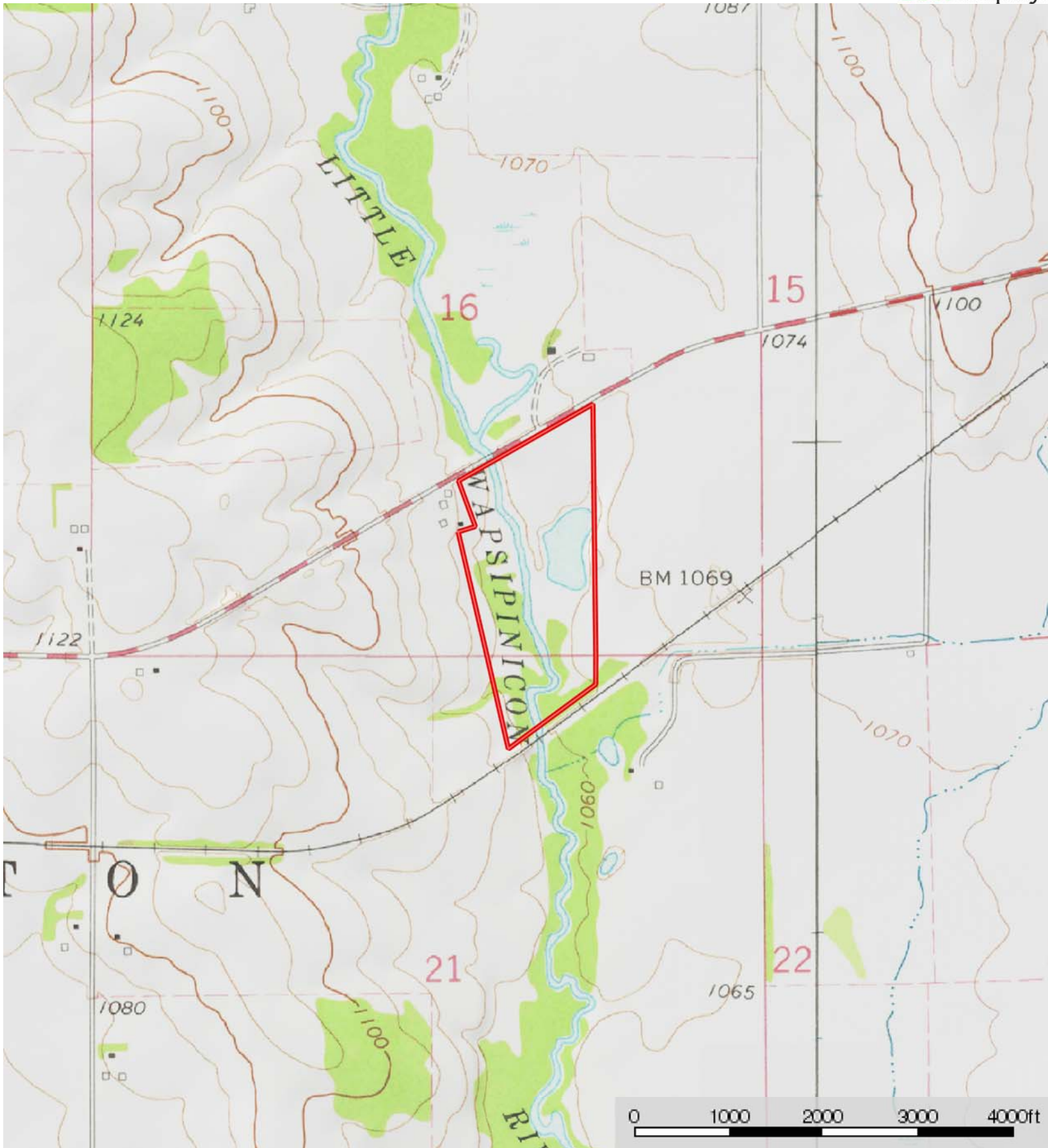
Land, Capability


	1	2	3	4	5	6	7	8
'Wild Life'	•	•	•	•	•	•	•	•
Forestry	•	•	•	•	•	•	•	
Limited	•	•	•	•	•	•	•	
Moderate	•	•	•	•	•	•		
Intense	•	•	•	•	•			
Limited	•	•	•	•				
Moderate	•	•	•					
Intense	•	•						
Very Intense	•							

Grazing Cultivation

(c) climatic limitations (e) susceptibility to erosion

(s) soil limitations within the rooting zone (w) excess of water



 Boundary