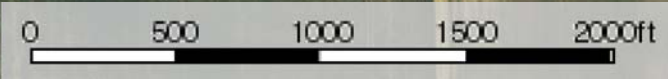
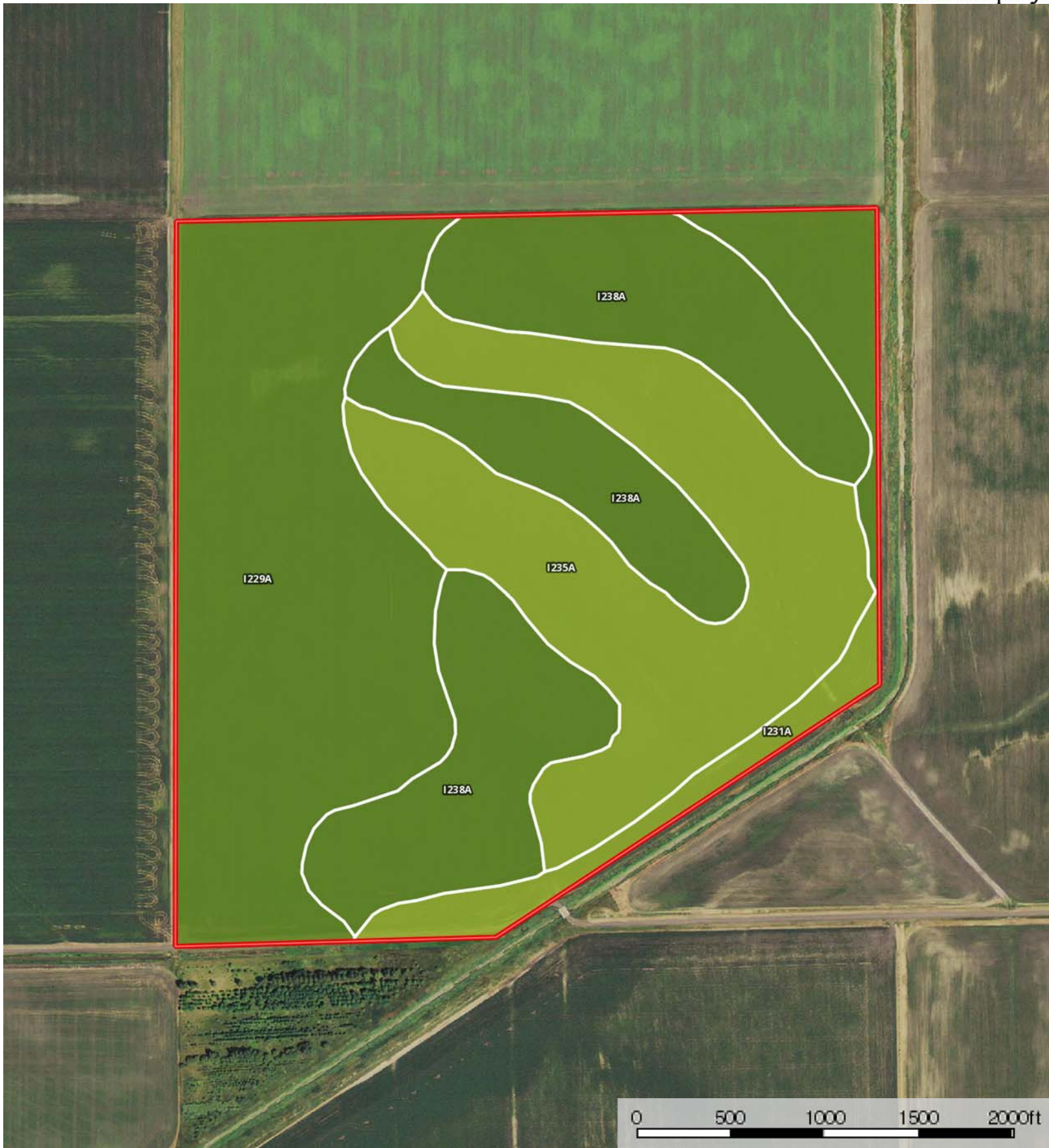



 Boundary



L-2100141

Cass County, North Dakota, 138.8 AC +/-



 Boundary

|  Boundary 141.7 ac

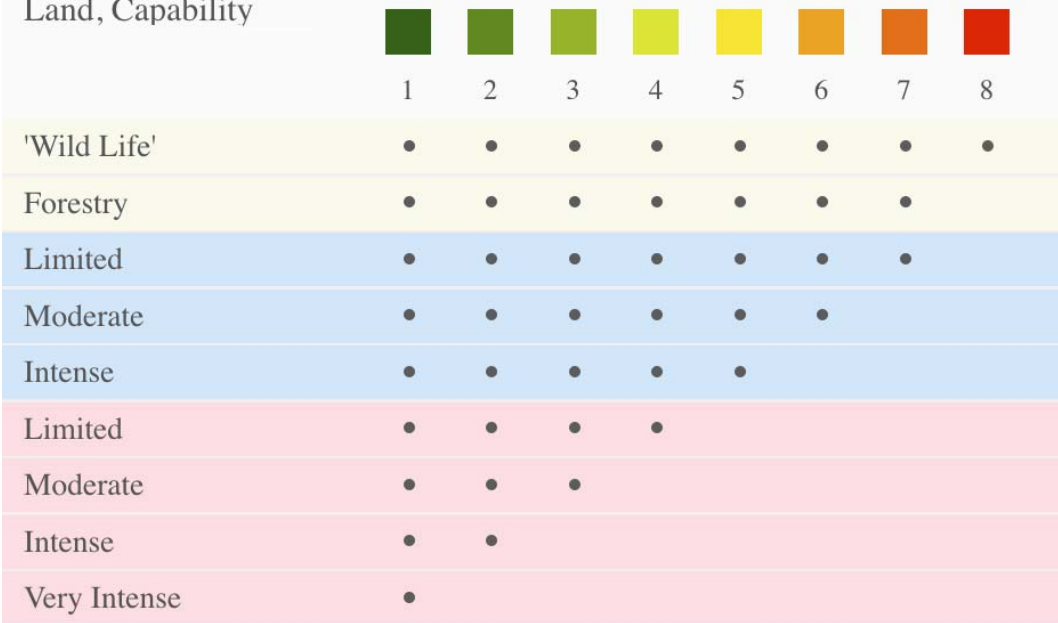
SOIL CODE	SOIL DESCRIPTION	ACRES	%	CPI	CAP
I238A	Fargo-Hegne silty clays, 0 to 1 percent slopes	42.7	30.15	84	2w
I235A	Fargo silty clay, depressional, 0 to 1 percent slopes	38.3	27.01	86	3w
I231A	Dovray silty clay, 0 to 1 percent slopes	6.1	4.29	64	3w
I229A	Fargo silty clay, 0 to 1 percent slopes	54.6	38.54	86	2w
TOTALS		141.7	100%	84.45	2.31

### Capability Legend

Increased Limitations and Hazards

Decreased Adaptability and Freedom of Choice Users

Land, Capability



### Grazing Cultivation

(c) climatic limitations (e) susceptibility to erosion

(s) soil limitations within the rooting zone (w) excess of water

L-2100141

Cass County, North Dakota, 138.8 AC +/-



 Boundary



L-2100141

Cass County, North Dakota, 138.8 AC +/-



Boundary