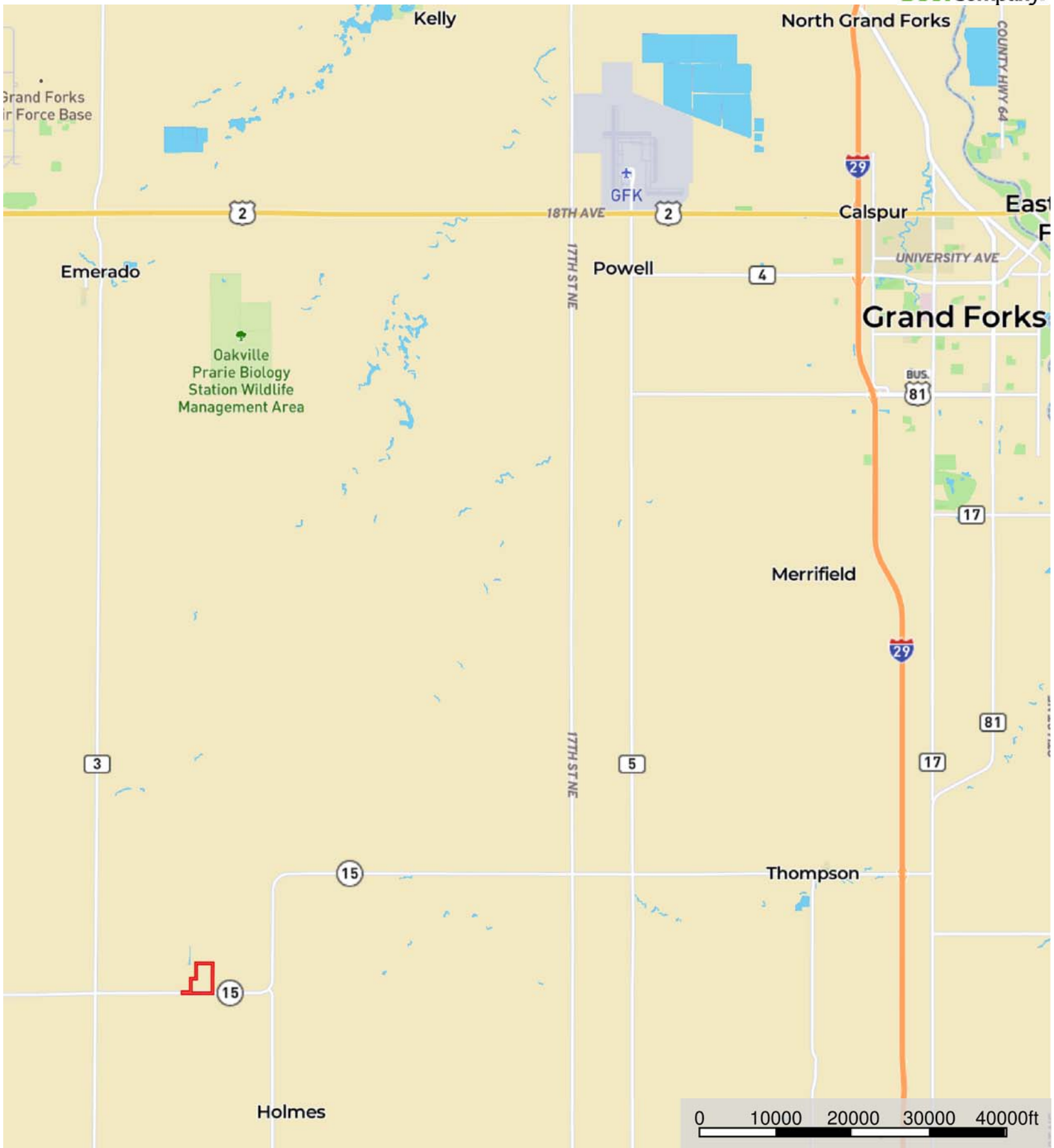


L-2100395

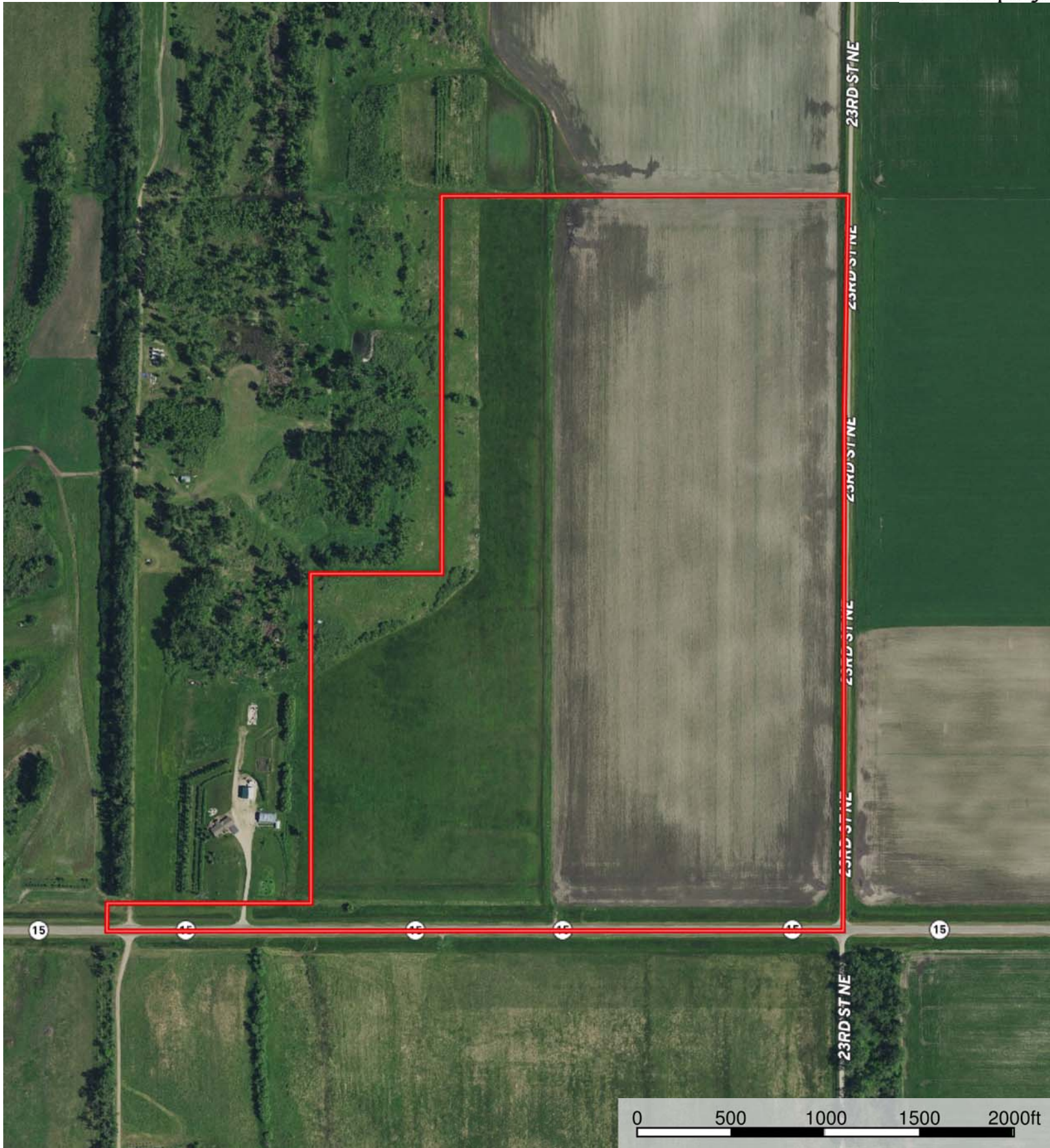
Grand Forks County, North Dakota, 103.01 AC +/-




 Boundary


L-2100395

Grand Forks County, North Dakota, 103.01 AC +/-



 Boundary



 Boundary

Boundary 103.0 ac

SOIL CODE	SOIL DESCRIPTION	ACRES	%	CPI	CAP
I490A	Glyndon-Tiffany silt loams, 0 to 2 percent slopes	38.0	36.91	89	2e
I318A	Borup silt loam, 0 to 1 percent slopes	8.7	8.48	72	2w
I309A	Arveson loam, 0 to 1 percent slopes	28.9	28.08	61	2w
IGp	Pits, gravel and sand	0.4	0.35	2	8s
I365B	Arvilla sandy loam, 0 to 6 percent slopes	1.0	0.96	41	3e
I422D	Sioux loam, 2 to 15 percent slopes	0.5	0.49	29	6s
I376A	Colvin silty clay loam, 0 to 1 percent slopes	25.5	24.72	68	2w
TOTALS		103.0	100%	73.44	2.05

Capability Legend

Increased Limitations and Hazards

Decreased Adaptability and Freedom of Choice Users

Land, Capability


	1	2	3	4	5	6	7	8
'Wild Life'	•	•	•	•	•	•	•	•
Forestry	•	•	•	•	•	•	•	
Limited	•	•	•	•	•	•	•	
Moderate	•	•	•	•	•	•		
Intense	•	•	•	•	•			
Limited	•	•	•	•				
Moderate	•	•	•					
Intense	•	•						
Very Intense	•							

Grazing Cultivation

(c) climatic limitations (e) susceptibility to erosion

(s) soil limitations within the rooting zone (w) excess of water



 Boundary

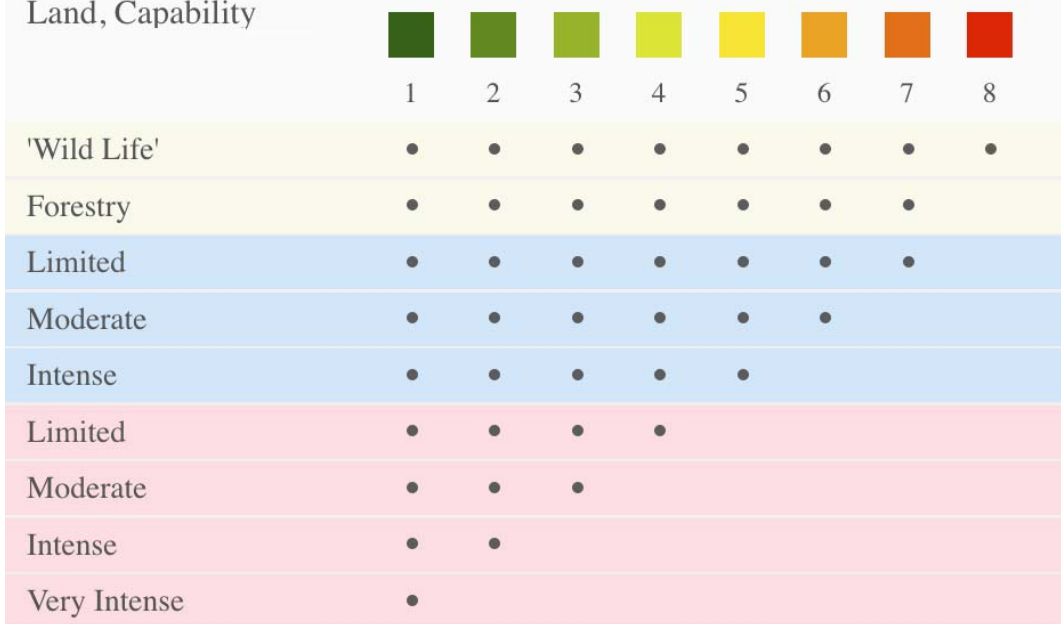
SOIL CODE	SOIL DESCRIPTION	ACRES	%	CPI	CAP
I490A	Glyndon-Tiffany silt loams, 0 to 2 percent slopes	34.1	38.66	89	2e
I318A	Borup silt loam, 0 to 1 percent slopes	7.4	8.37	72	2w
I309A	Arveson loam, 0 to 1 percent slopes	21.2	24.07	61	2w
I365B	Arvilla sandy loam, 0 to 6 percent slopes	0.0	0.01	41	3e
I376A	Colvin silty clay loam, 0 to 1 percent slopes	25.5	28.88	68	2w
TOTALS		88.1	100%	74.77	2.0

Capability Legend

Increased Limitations and Hazards

Decreased Adaptability and Freedom of Choice Users

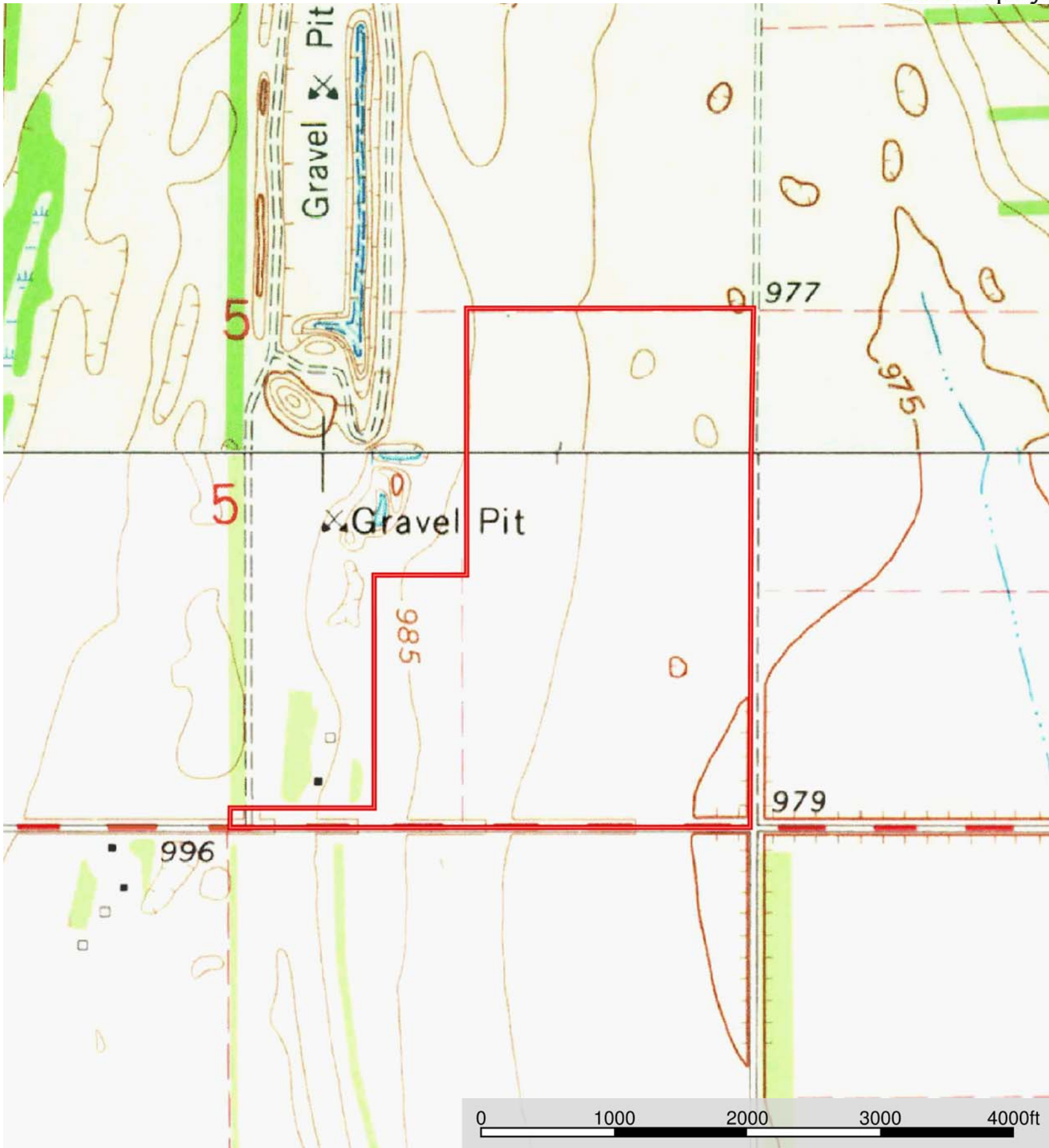
Land, Capability



Grazing Cultivation

(c) climatic limitations (e) susceptibility to erosion

(s) soil limitations within the rooting zone (w) excess of water



 Boundary