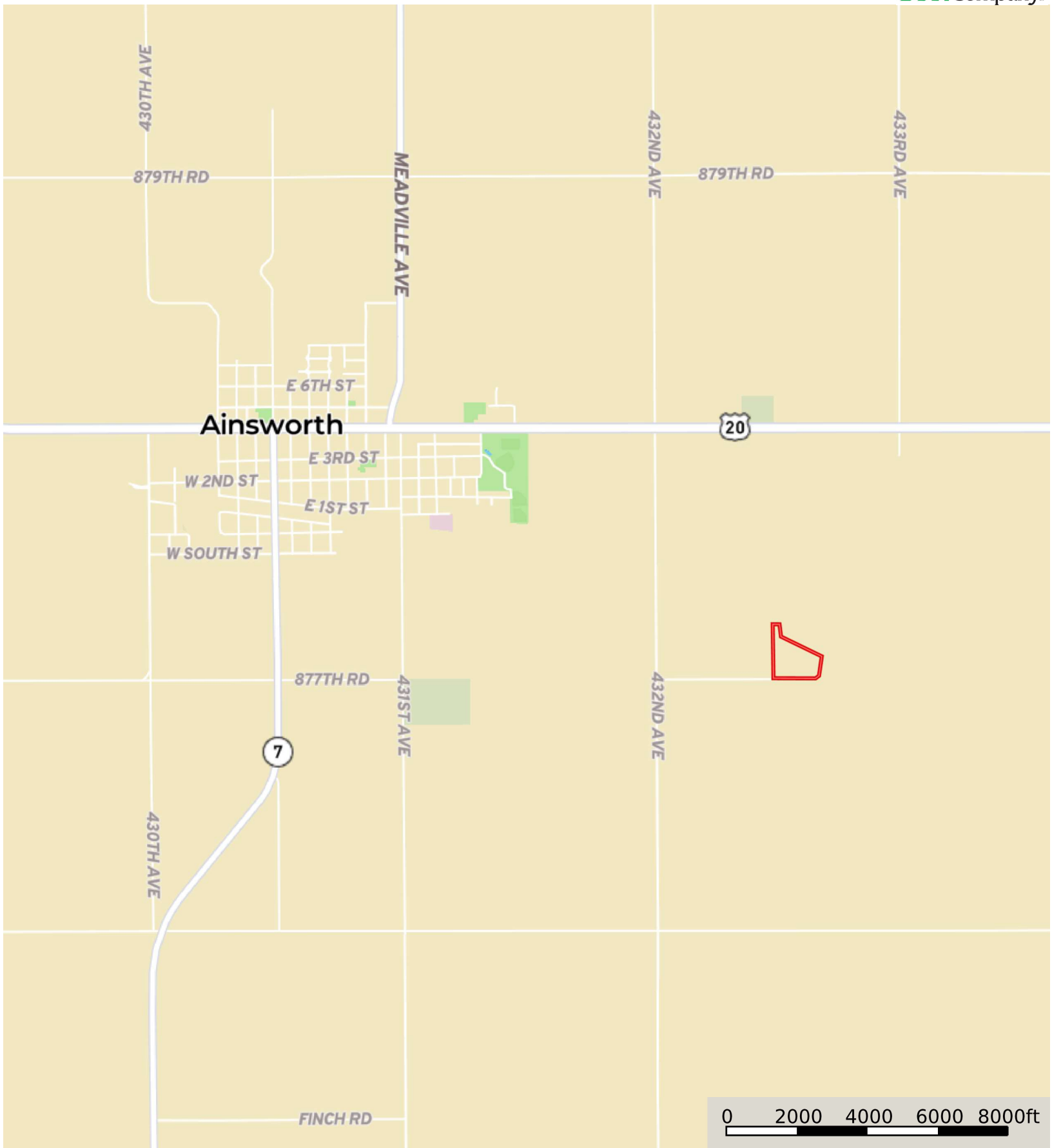


L-2100501

Brown County, Nebraska, 17 AC +/-




 Boundary



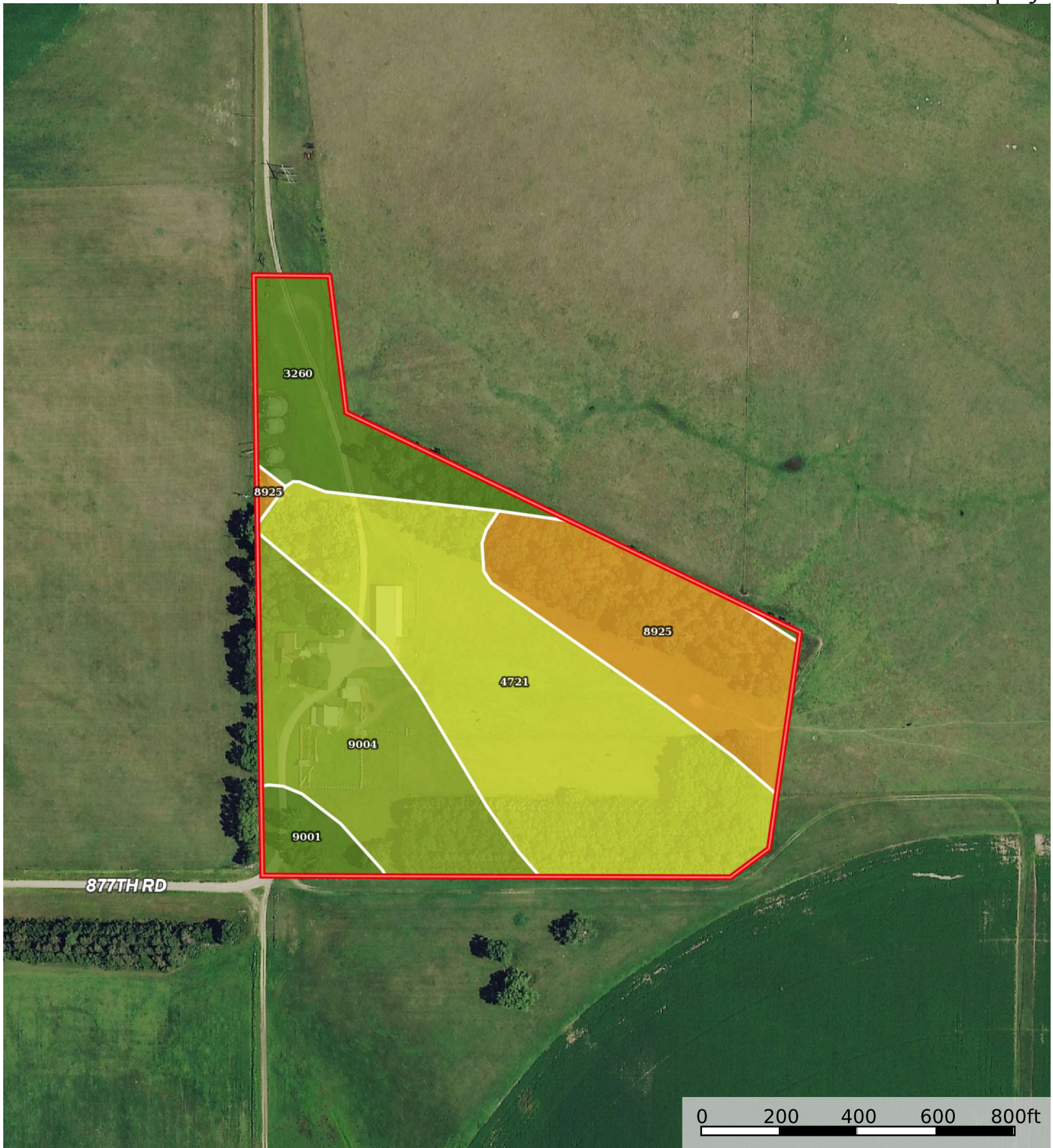
877TH RD



 Boundary

L-2100501

Brown County, Nebraska, 17 AC +/-



 Boundary

|  Boundary 17.0 ac









SOIL CODE	SOIL DESCRIPTION	ACRES	%	CAP
8925	Simeon loamy sand, 0 to 3 percent slopes	3.2	19.12	6s
4721	Pivot loamy sand, 0 to 3 percent slopes	7.2	42.12	4e
9004	Anselmo fine sandy loam, 3 to 6 percent slopes	3.8	22.16	3e
3260	O'Neill fine sandy loam, 0 to 2 percent slopes	2.2	13.05	2c
9001	Anselmo fine sandy loam, 0 to 3 percent slopes	0.6	3.55	2e
TOTALS		17.0	100%	3.83

Capability Legend

Increased Limitations and Hazards

Decreased Adaptability and Freedom of Choice Users

Land, Capability

								
	1	2	3	4	5	6	7	8
'Wild Life'	•	•	•	•	•	•	•	•
Forestry	•	•	•	•	•	•	•	
Limited	•	•	•	•	•	•	•	
Moderate	•	•	•	•	•	•		
Intense	•	•	•	•	•			
Limited	•	•	•	•				
Moderate	•	•	•					
Intense	•	•						
Very Intense	•							

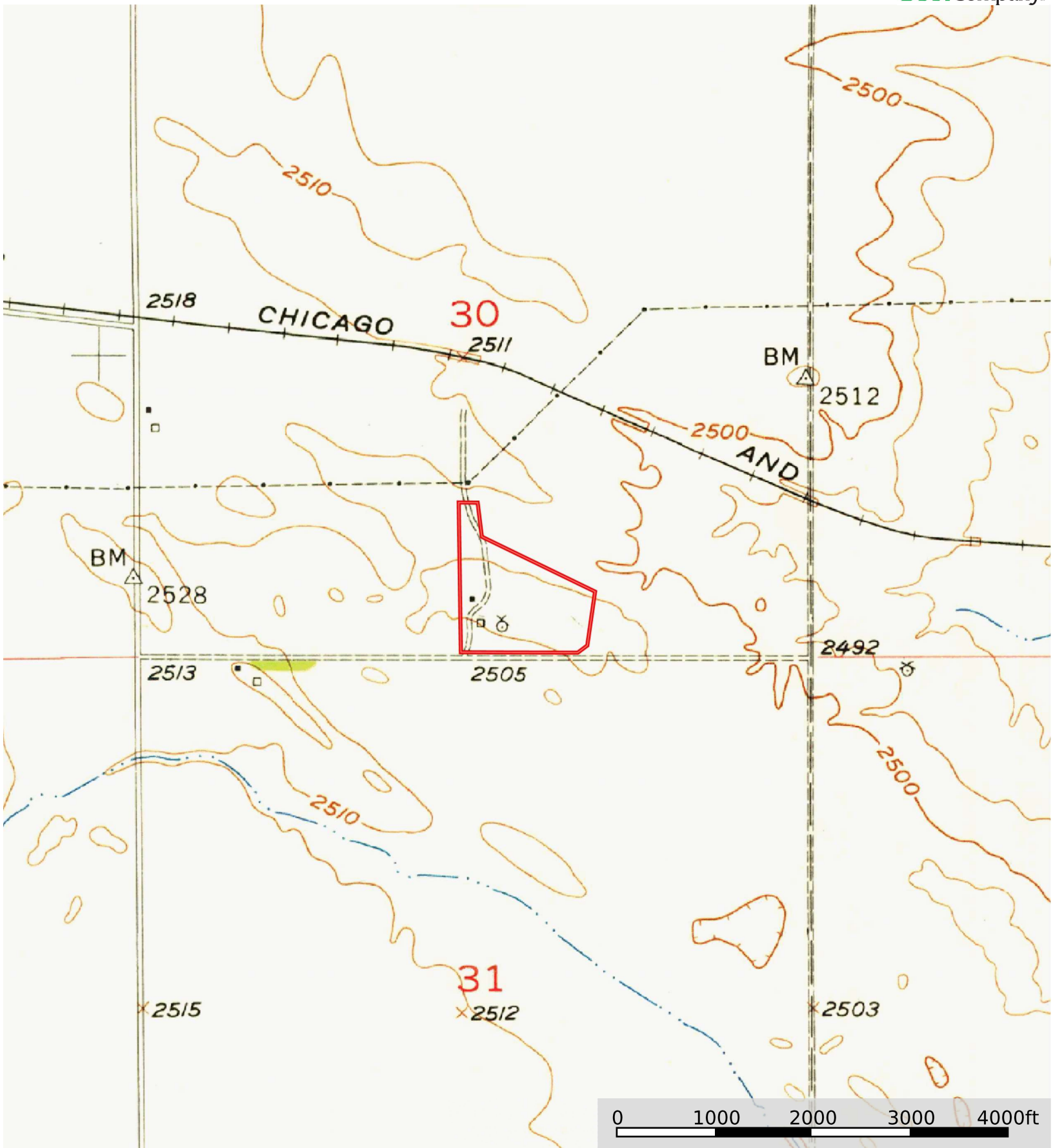
Grazing Cultivation

(c) climatic limitations (e) susceptibility to erosion

(s) soil limitations within the rooting zone (w) excess of water

L-2100501

Brown County, Nebraska, 17 AC +/-



Boundary