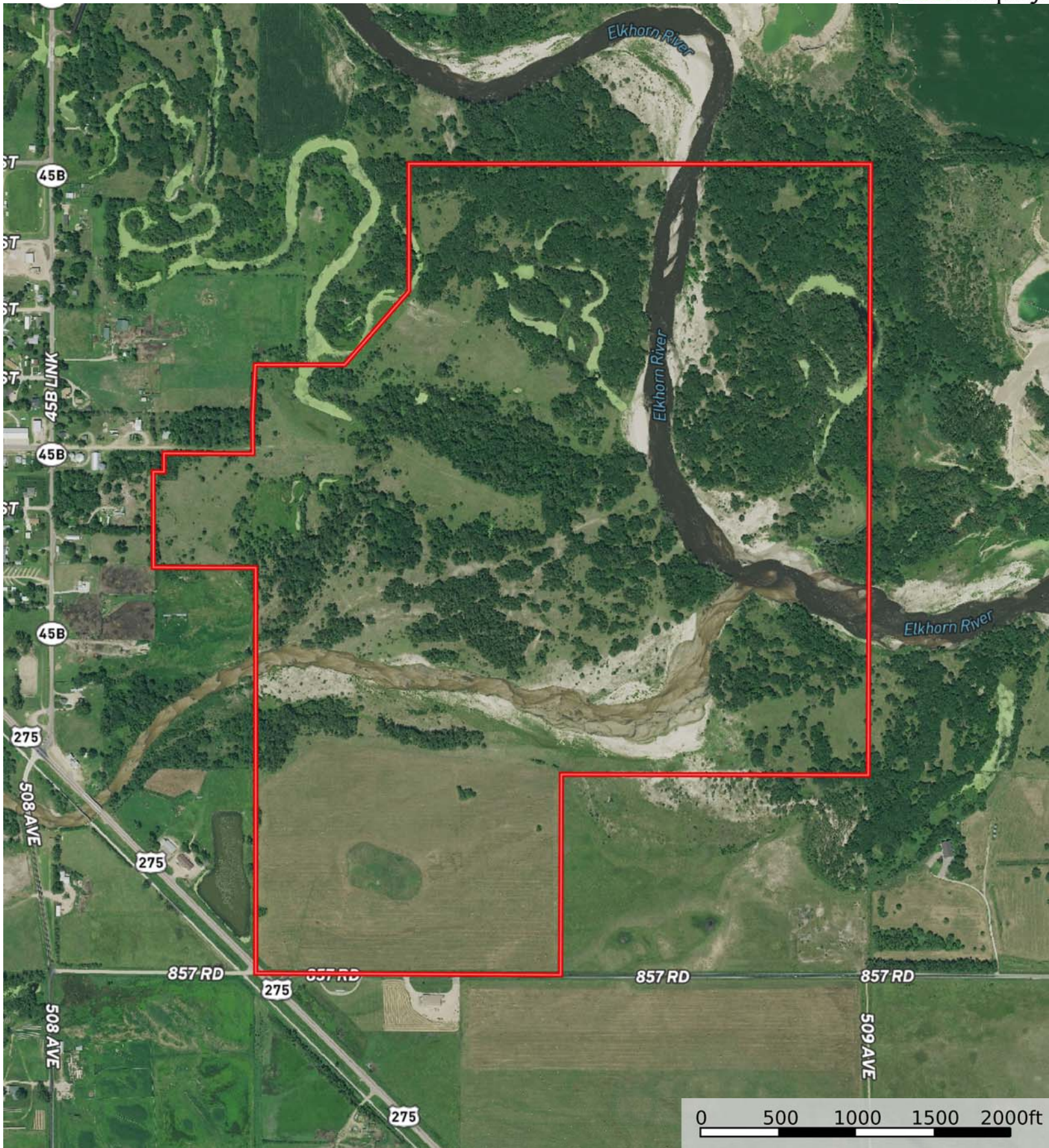
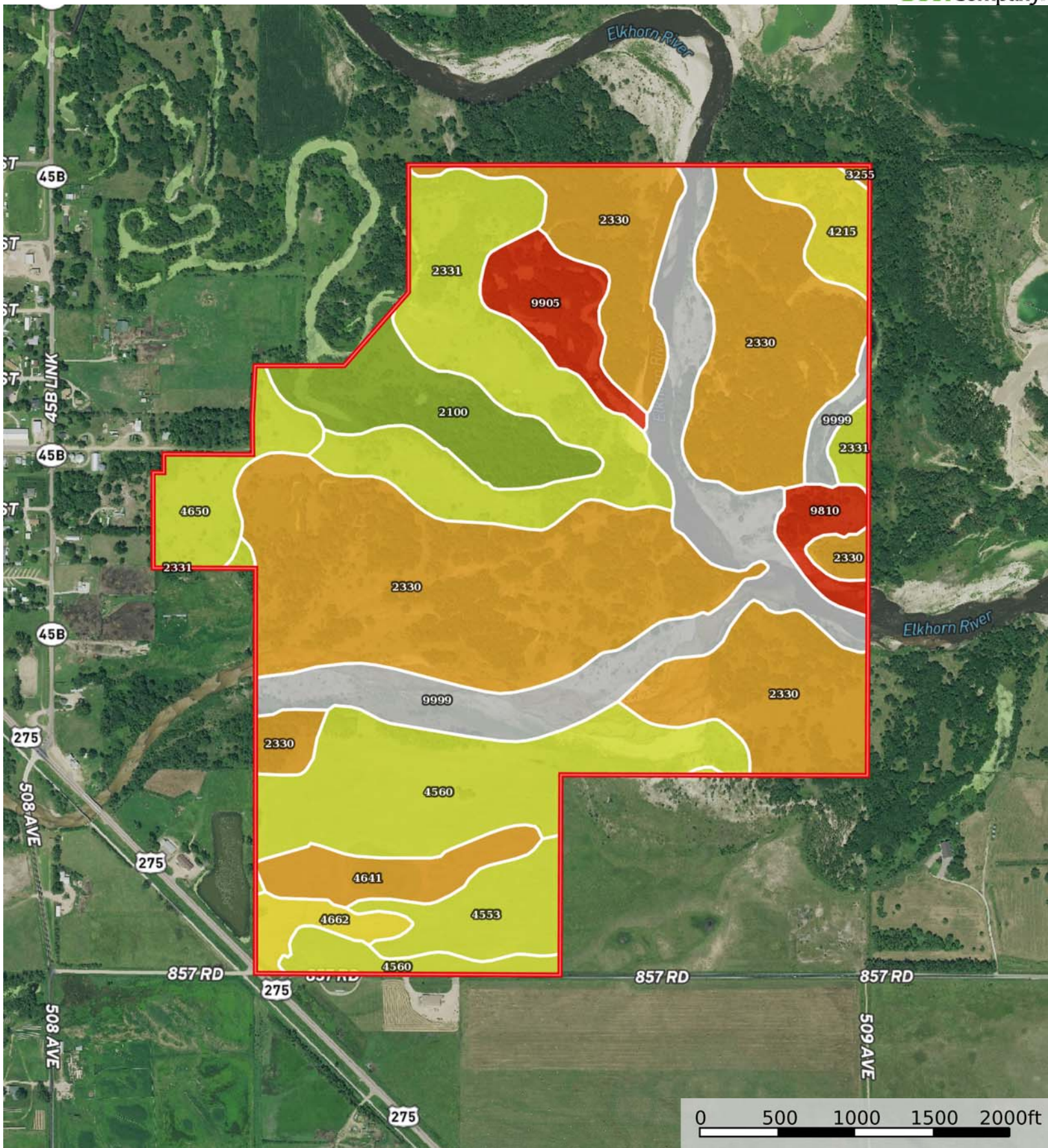


 Boundary



 Boundary



Boundary



|  Boundary 402.7 ac









SOIL CODE	SOIL DESCRIPTION	ACRES	%	CAP
9999	Water	49.0	12.16	-
2331	Inavale loamy fine sand, rarely flooded	48.1	11.93	4e
3255	Meadin sandy loam, 2 to 30 percent slopes	0.4	0.1	6s
2330	Inavale fine sand, rarely flooded	163.3	40.56	6e
9810	Riverwash	6.5	1.62	8w
4215	Blackloup loam, rarely flooded	8.6	2.15	5w
9905	Fluvaquents, sandy-Fluvaquents, loamy complex, frequently flooded	12.8	3.18	8w
4553	Elsmere loamy fine sand, 0 to 3 percent slopes	13.8	3.44	4w
4560	Elsmere-lpage loamy fine sands, 0 to 3 percent slopes	48.6	12.08	4w
2100	Boel fine sandy loam, occasionally flooded	21.5	5.35	3w
4641	lpage fine sand, 0 to 3 percent slopes	11.3	2.82	6e
4662	Loup fine sandy loam, 0 to 1 percent slopes	5.6	1.39	5w
4650	lpage loamy fine sand, 0 to 3 percent slopes	13.0	3.22	4e
TOTALS		402.7	100%	4.56

Capability Legend

Increased Limitations and Hazards

Decreased Adaptability and Freedom of Choice Users

Land, Capability

								
	1	2	3	4	5	6	7	8
'Wild Life'	•	•	•	•	•	•	•	•
Forestry	•	•	•	•	•	•	•	
Limited	•	•	•	•	•	•	•	
Moderate	•	•	•	•	•	•		
Intense	•	•	•	•	•			
Limited	•	•	•	•				
Moderate	•	•	•					
Intense	•	•						
Very Intense	•							

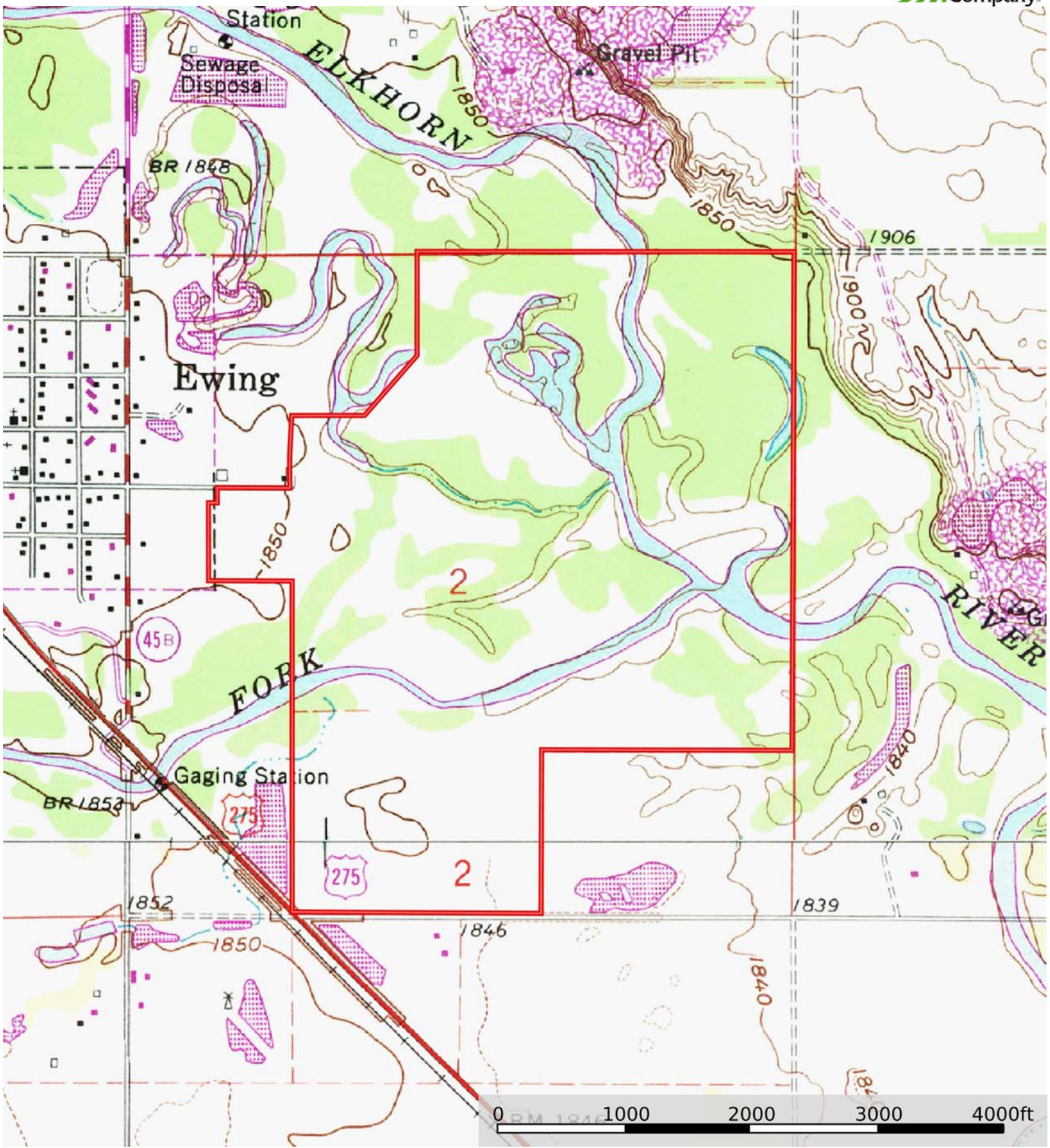
Grazing Cultivation

(c) climatic limitations (e) susceptibility to erosion

(s) soil limitations within the rooting zone (w) excess of water

L-2100641

Holt County, Nebraska, 401.93 AC +/-



Boundary