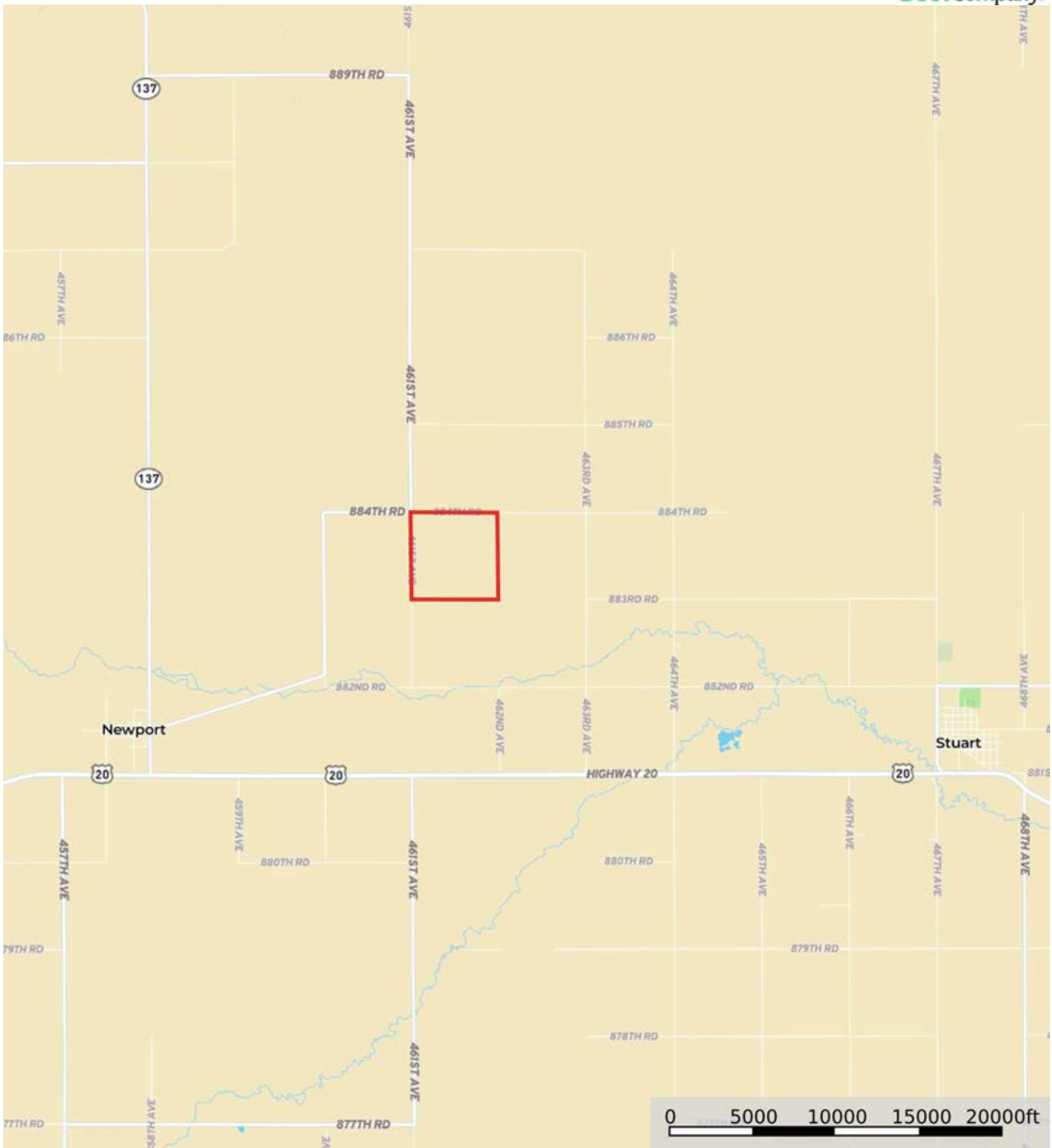


L-2100701

Rock County, Nebraska, 630.05 AC +/-




Boundary

L-2100701

Rock County, Nebraska, 630.05 AC +/-

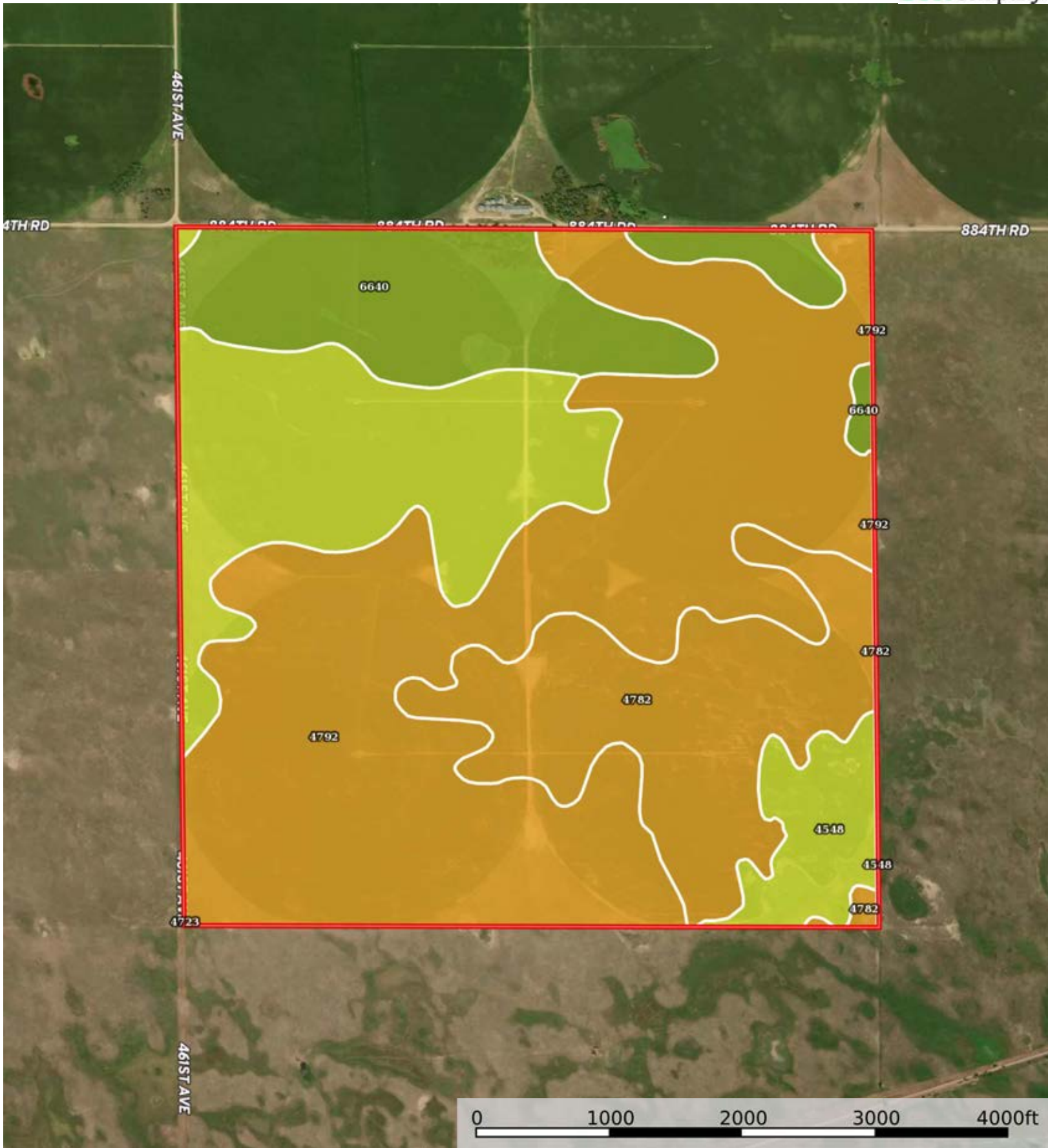



 Boundary



L-2100701

Rock County, Nebraska, 630.05 AC +/-



 Boundary

|  Boundary 630.05 ac

SOIL CODE	SOIL DESCRIPTION	ACRES	%	CPI	NCCPI	CAP
4792	Valentine fine sand, 3 to 9 percent slopes, moist	298.79	47.42	0	31	6e
4723	Pivot-Valentine complex, 0 to 9 percent slopes	109.46	17.37	0	27	4e
4782	Valentine fine sand, 0 to 3 percent slopes, moist	102.75	16.31	0	31	6e
6640	Boelus loamy sand, 0 to 3 percent slopes	90.82	14.41	0	43	3e
4548	Els-Ipage-Tryon loamy sands, 0 to 6 percent slopes	28.05	4.45	0	23	4w
6636	Boelus loamy fine sand, 0 to 2 percent slopes	0.18	0.03	0	57	3e
TOTALS		630.05(*)	100%	-	31.69	5.13

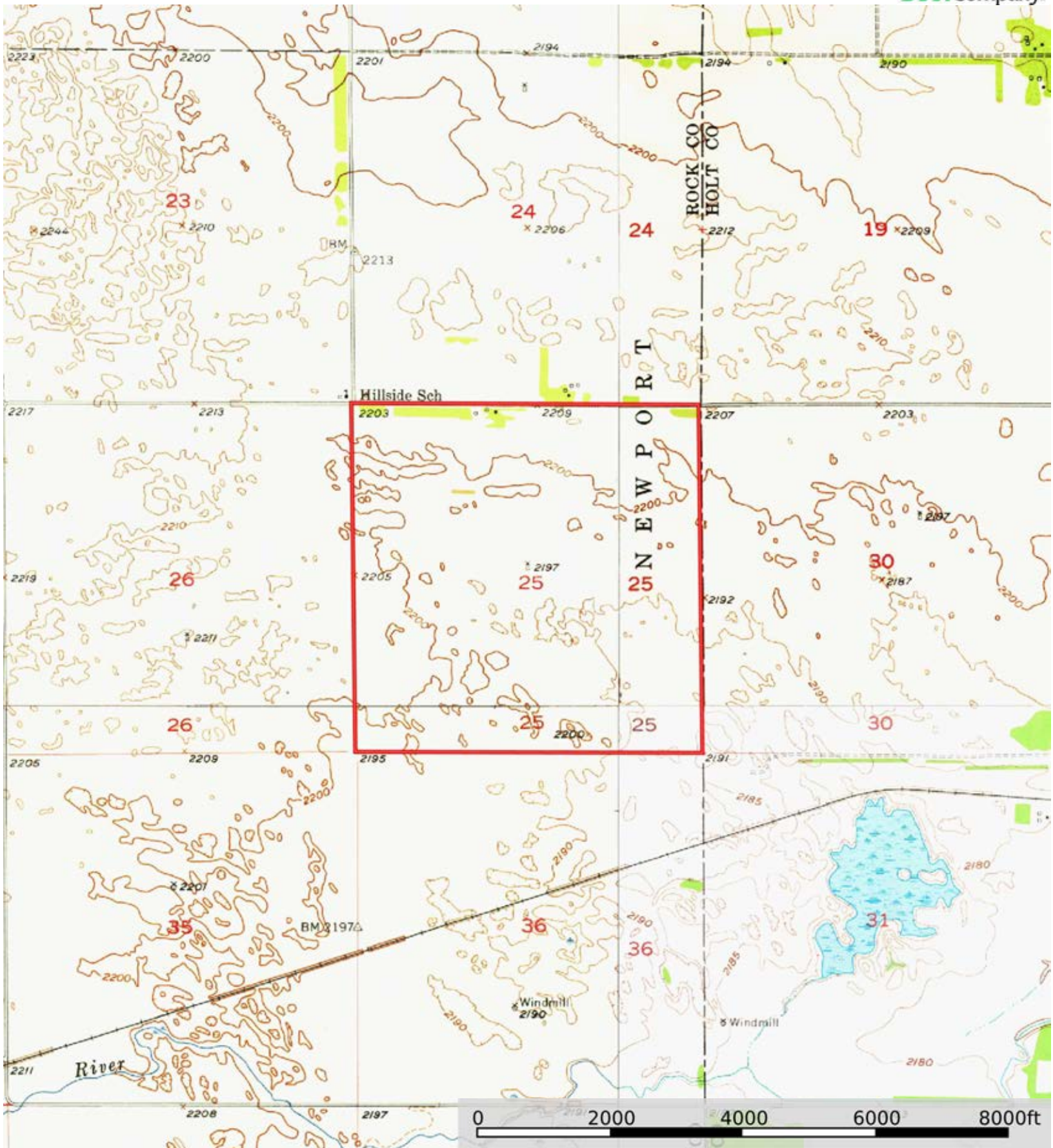
(\*) Total acres may differ in the second decimal compared to the sum of each acreage soil. This is due to a round error because we only show the acres of each soil with two decimal.






L-2100701

Rock County, Nebraska, 630.05 AC +/-



 Boundary