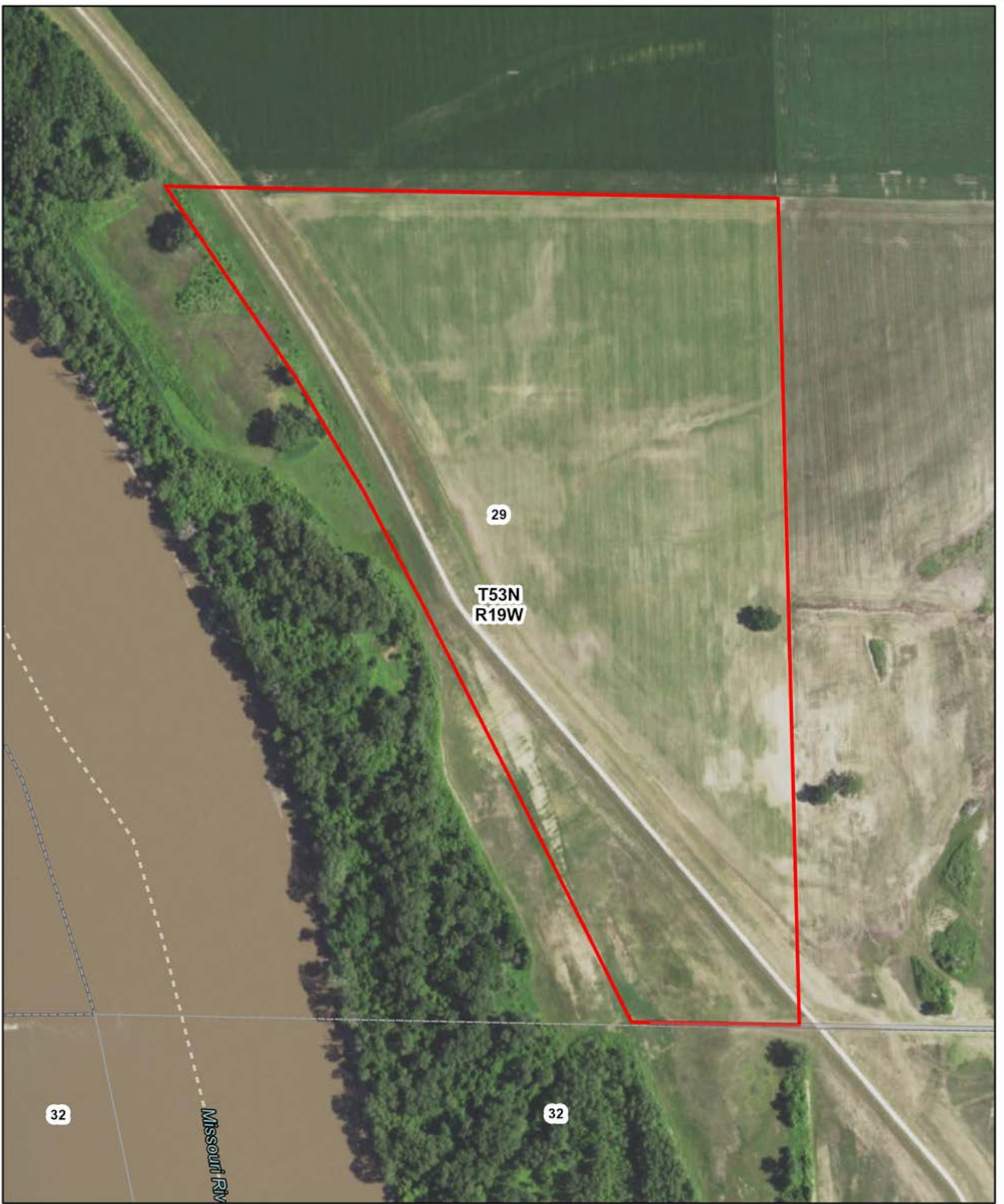


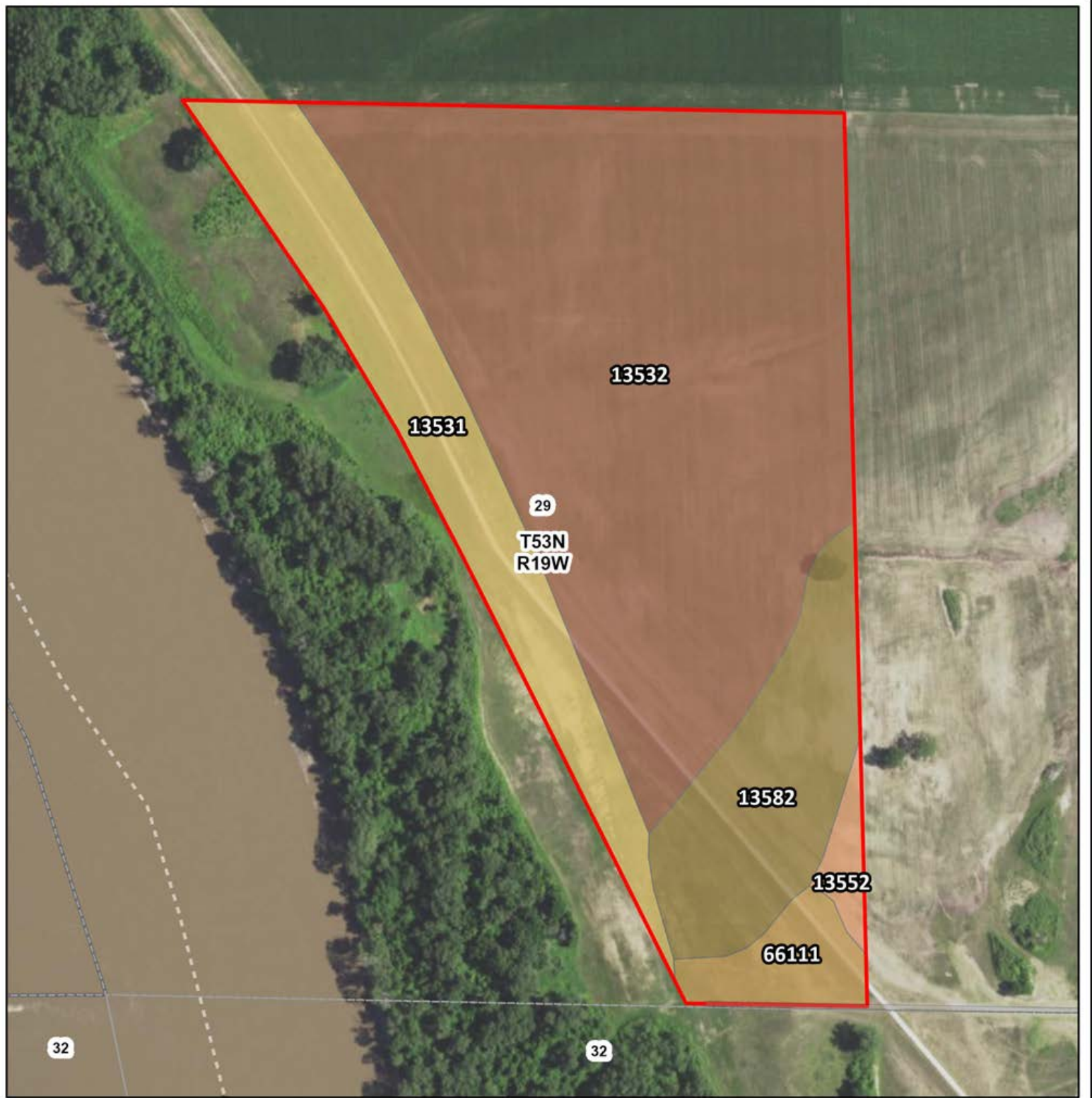
L-21474
Chariton County, Missouri

Latitude: 39.3943°N
Longitude: 93.1004°W
Imagery Source: USDA NAIP
Soil Data Source: USDA NRCS
Boundaries are Approximate



L-21474
Chariton County, Missouri

Latitude: 39.3688°N
Longitude: 93.0732°W
Imagery Source: USDA NAIP
Soil Data Source: USDA NRCS
Boundaries are Approximate

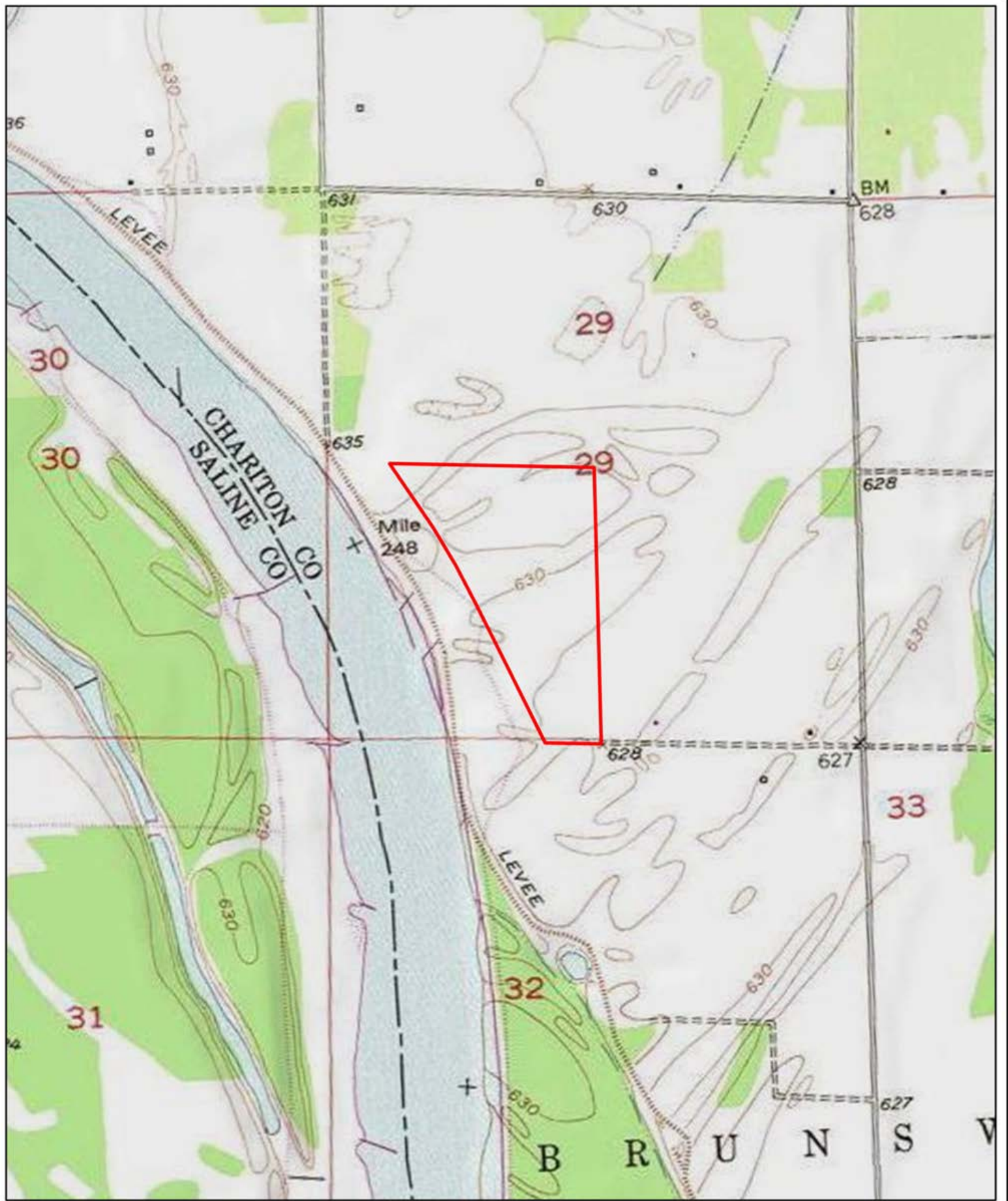


Map Symbol	Name	Non-IRR LCC	ACRES
13532	Haynie-Waldron complex, 0 to 2 percent slopes, occasionally flooded	IIw	46.2
13531	Haynie-Waldron complex, 0 to 2 percent slopes, frequently flooded	Vw	12.7
13582	Sarpy loamy fine sand, 0 to 2 percent slopes, occasionally flooded	IVs	9.3
66111	Waldron silty clay, loamy substratum, 0 to 2 percent slopes, occasionally flooded	IIIw	2.8
13552	Modale silt loam, 0 to 2 percent slopes, occasionally flooded	IIIw	1.1
TOTAL			72.1



L-21474
Chariton County, Missouri

Latitude: 39.3688°N
Longitude: 93.0732°W
Imagery Source: USDA NAIP
Soil Data Source: USDA NRCS
Boundaries are Approximate



L-21474
Chariton County, Missouri

Latitude: 39.3688°N
Longitude: 93.0732°W
Imagery Source: USDA NAIP
Soil Data Source: USDA NRCS
Boundaries are Approximate