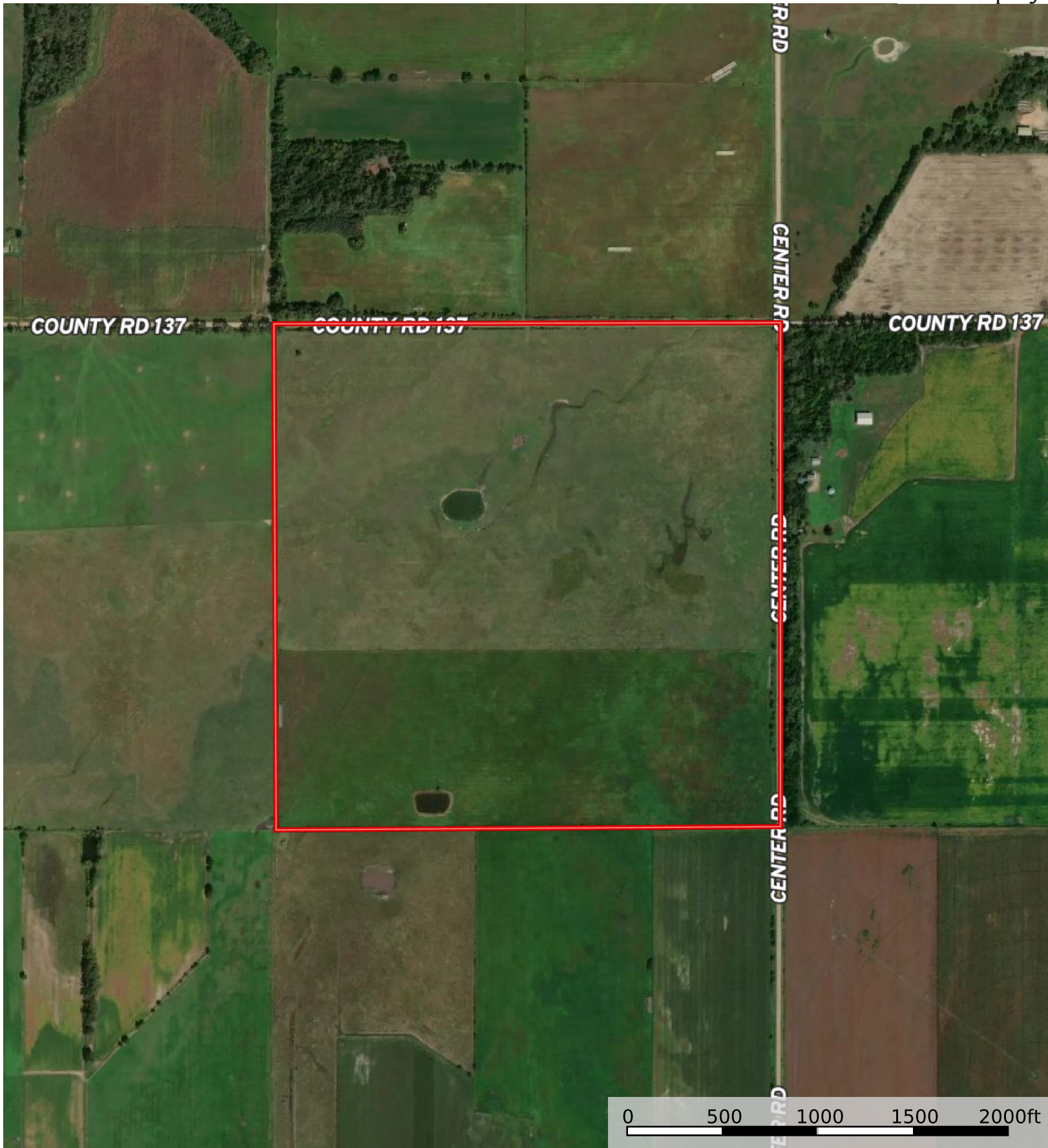


L-2200110

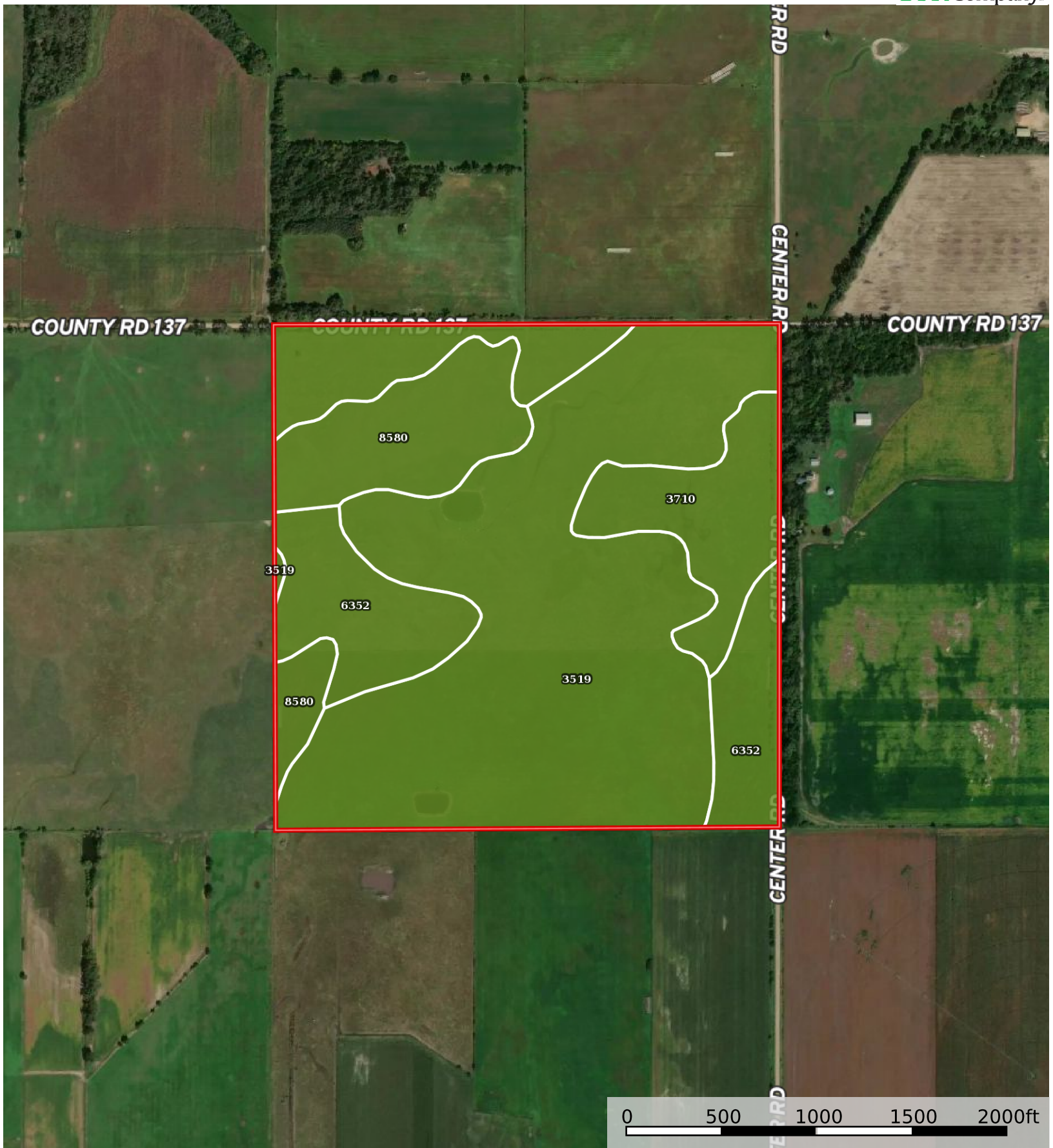
Polk County, Nebraska, 161 AC +/-



Boundary



 Boundary



 Boundary

Boundary 161.0 ac

SOIL CODE	SOIL DESCRIPTION	ACRES	%	CPI	NCCPI	CAP
3519	Lamo silty clay loam, sandy substratum	88.97	55.26	0	71	2w
6352	Leshara silt loam, occasionally flooded	36.1	22.42	0	66	2w
8580	Wann fine sandy loam, occasionally flooded	20.23	12.57	0	45	2w
3710	Cass fine sandy loam, rarely flooded	15.7	9.75	0	57	2e
TOTALS		161.0(*)	100%	-	65.25	2.0

(*) Total acres may differ in the second decimal compared to the sum of each acreage soil. This is due to a round error because we only show the acres of each soil with two decimal.

Capability Legend

Increased Limitations and Hazards

Decreased Adaptability and Freedom of Choice Users

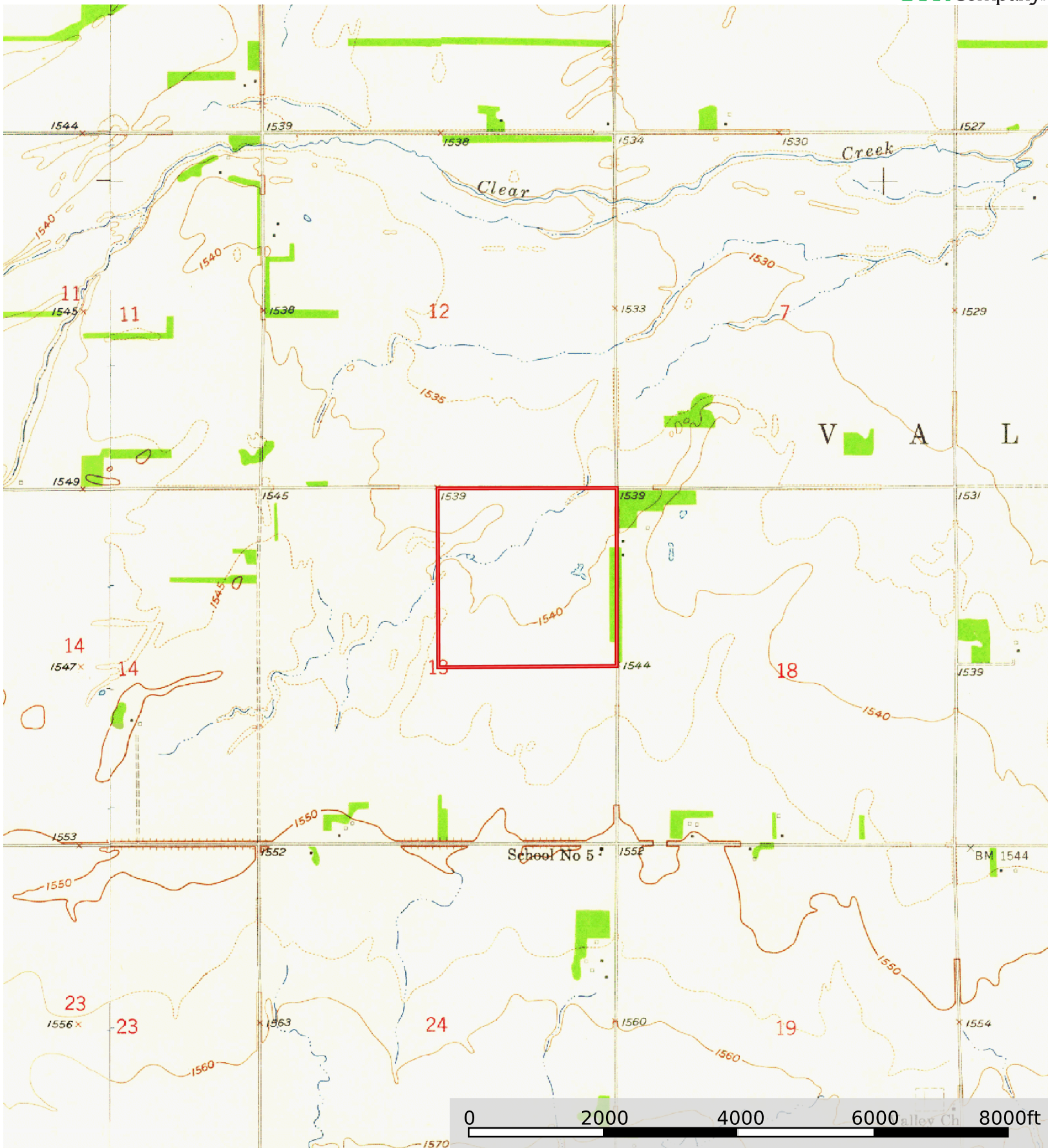
Land, Capability

	1	2	3	4	5	6	7	8
'Wild Life'	•	•	•	•	•	•	•	•
Forestry	•	•	•	•	•	•	•	
Limited	•	•	•	•	•	•	•	
Moderate	•	•	•	•	•	•		
Intense	•	•	•	•	•			
Limited	•	•	•	•				
Moderate	•	•	•					
Intense	•	•						
Very Intense	•							

Grazing Cultivation

(c) climatic limitations (e) susceptibility to erosion

(s) soil limitations within the rooting zone (w) excess of water



 Boundary