

L-2200146

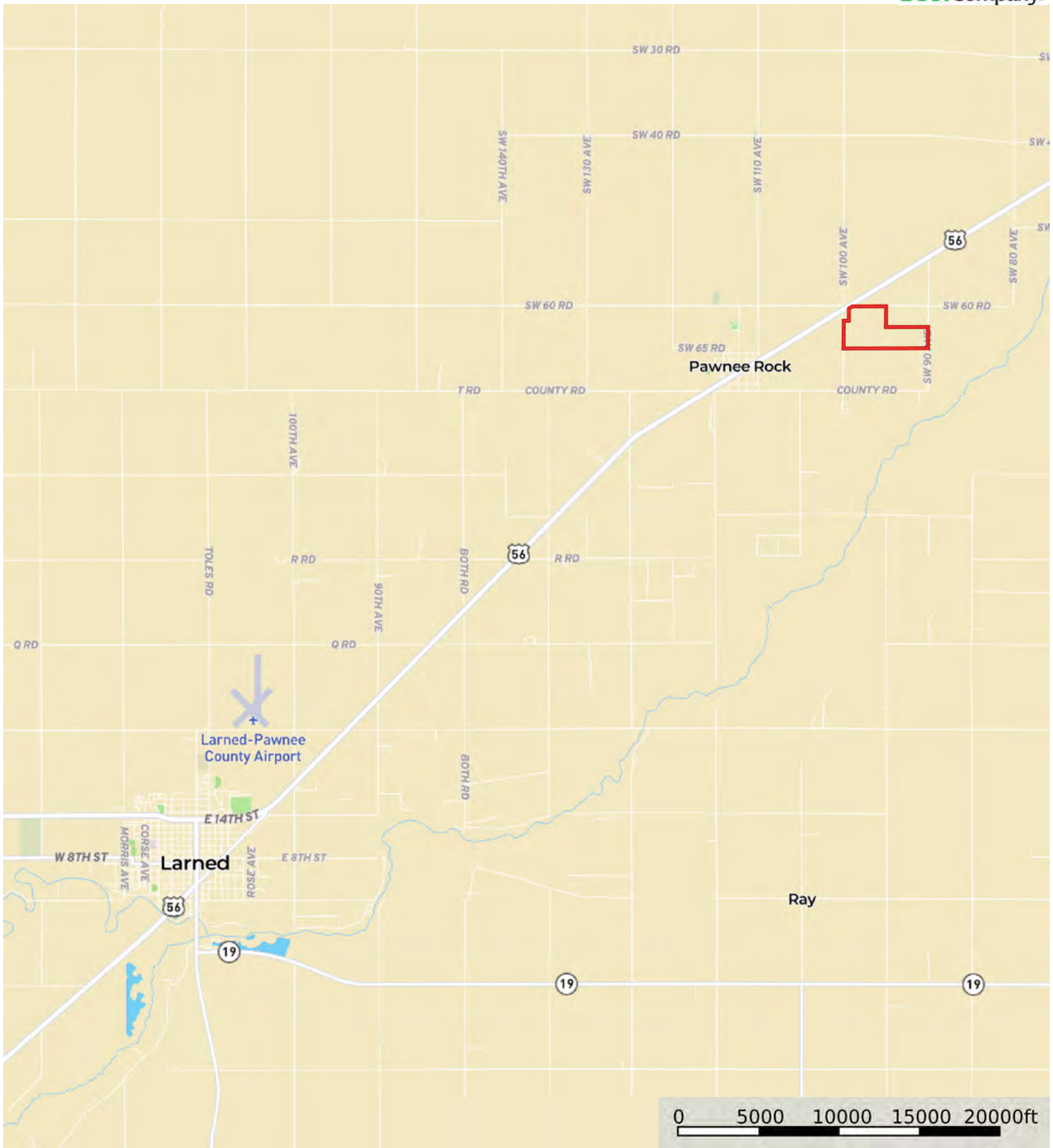
Barton County, Kansas, 229.46 AC +/-



 Boundary

L-2200146

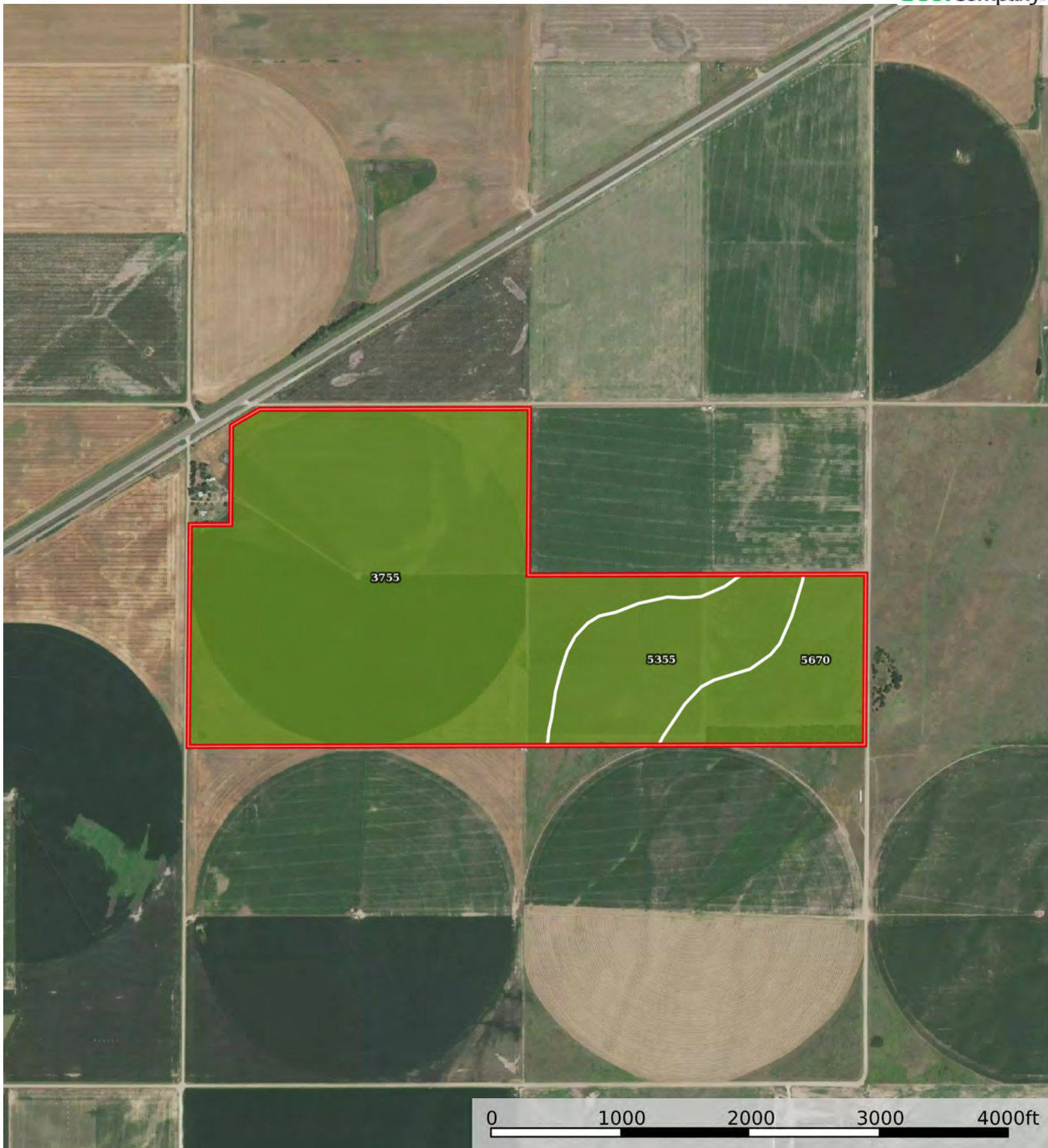
Barton County, Kansas, 229.46 AC +/-



 Boundary

L-2200146

Barton County, Kansas, 229.46 AC +/-



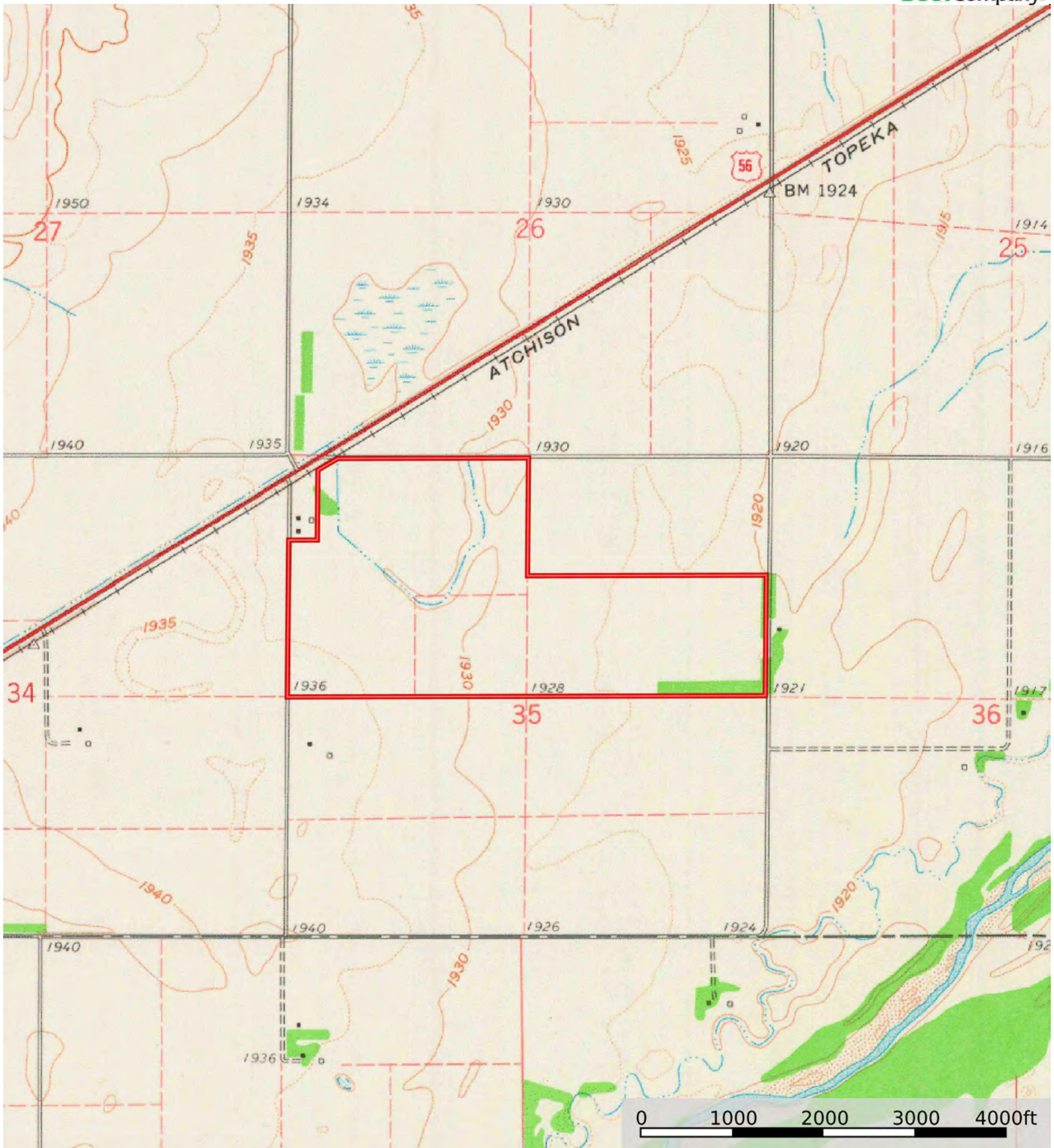
 Boundary

Boundary 229.46 ac

SOIL CODE	SOIL DESCRIPTION	ACRES	%	CPI	NCCPI	CAP
3755	Hord silt loam, rarely flooded	165.14	71.97	0	79	2c
5355	Kaski loam, rarely flooded	35.55	15.49	0	76	2w
5670	Waldeck fine sandy loam, occasionally flooded	28.77	12.54	0	45	2e
TOTALS		229.46(*)	100%	-	74.27	2.0

(*) Total acres may differ in the second decimal compared to the sum of each acreage soil. This is due to a round error because we only show the acres of each soil with two decimal.





 Boundary