


Boundary



 Boundary



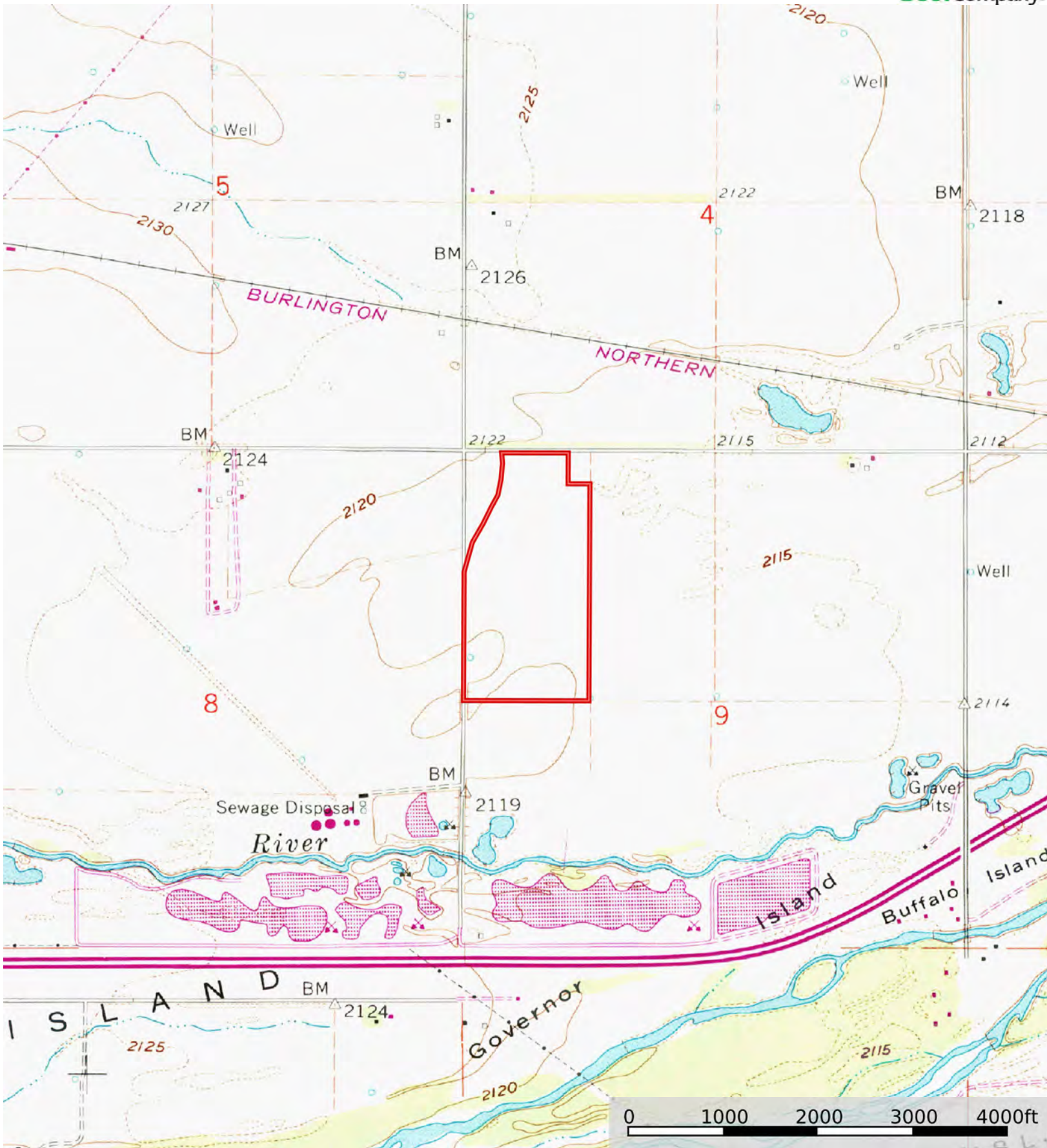
 Boundary

|  Boundary 71.42 ac

SOIL CODE	SOIL DESCRIPTION	ACRES	%	CPI	NCCPI	CAP
8506	Lex silt loam, rarely flooded	33.46	46.86	0	28	3w
6350	Leshara and Gibbon silt loams	20.32	28.46	0	61	2w
5632	Platte soils, occasionally flooded	8.99	12.59	0	24	6w
8402	Alda loam, rarely flooded	6.47	9.06	0	26	3w
8585	Wann loam, rarely flooded	2.18	3.05	0	46	2w
TOTALS		71.41(*)	100%	-	37.26	3.06

(*) Total acres may differ in the second decimal compared to the sum of each acreage soil. This is due to a round error because we only show the acres of each soil with two decimal.





Boundary