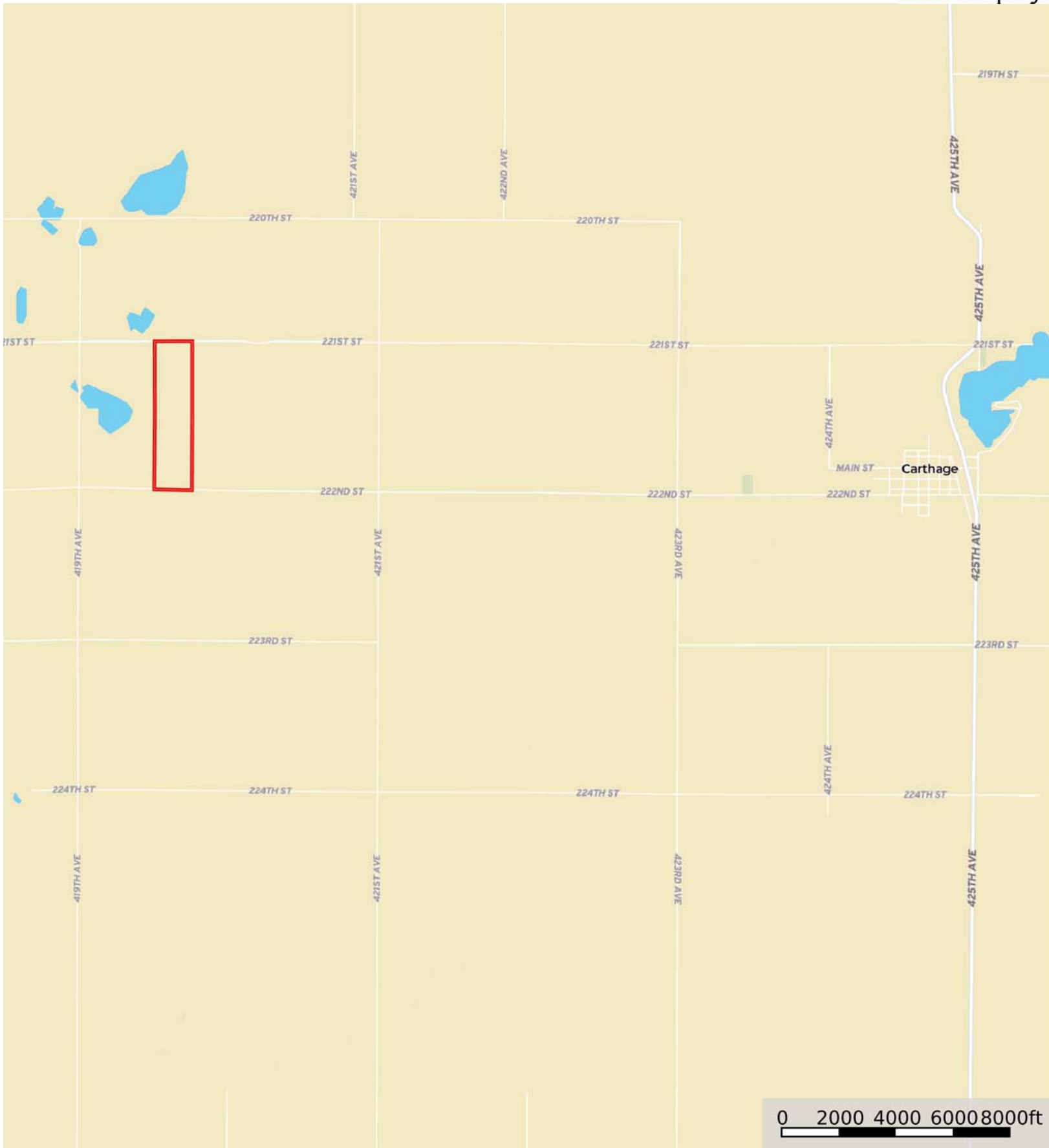


L-2200240

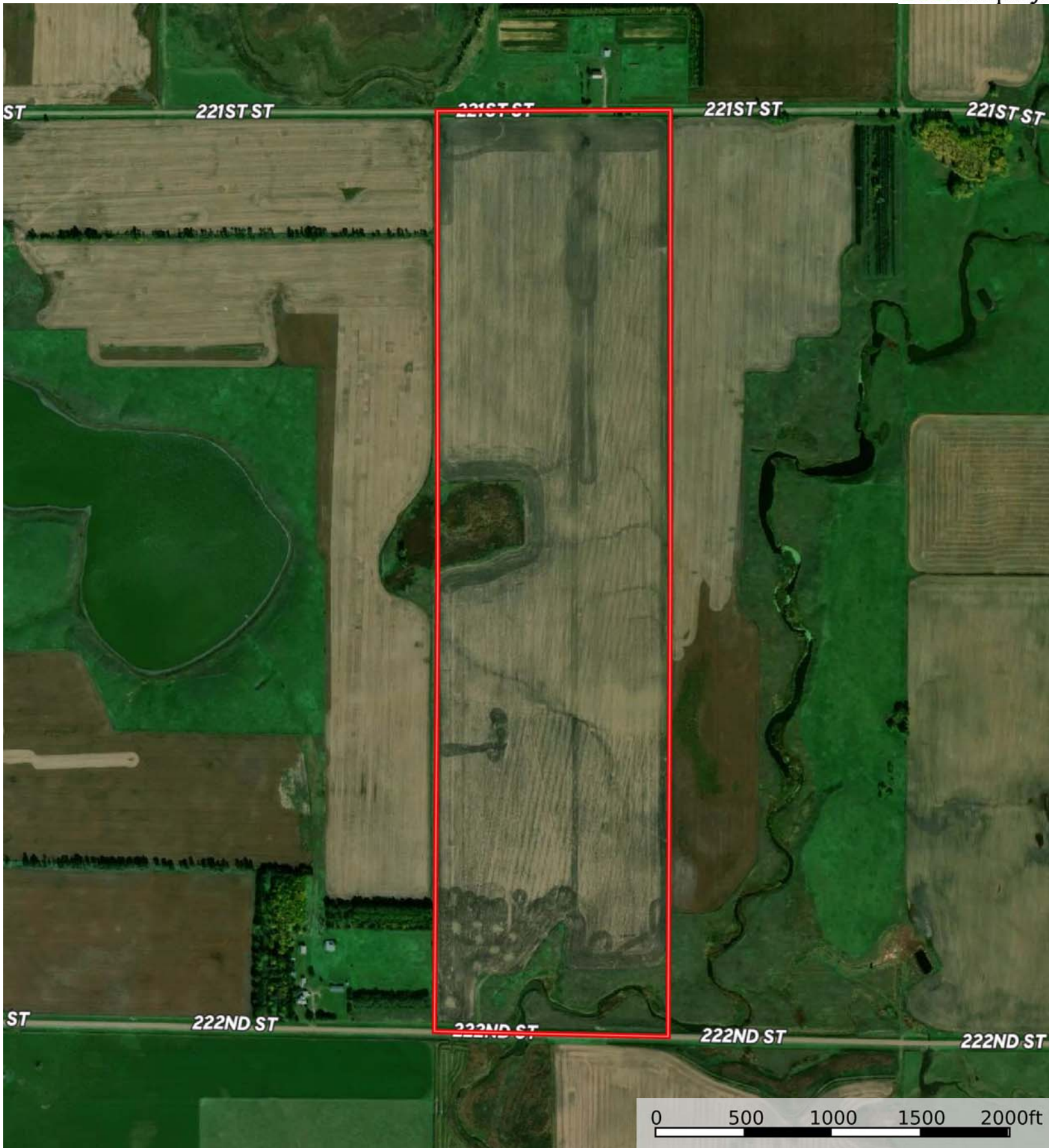
Miner County, South Dakota, 160 AC +/-



 Boundary



The information contained herein was obtained from sources deemed to be reliable. MapRight Services makes no warranties or guarantees as to the completeness or accuracy thereof.



 Boundary



 Boundary

Boundary 158.69 ac

SOIL CODE	SOIL DESCRIPTION	ACRES	%	CPI	NCCPI	CAP
CfA	Clarno-Bonilla loams, 0 to 2 percent slopes	112.49	70.89	88	68	2c
EgC	Ethan-Clarno loams, 6 to 9 percent slopes	18.64	11.75	65	64	4e
Bo	Bon loam, channeled, 0 to 2 percent slopes, frequently flooded	9.35	5.89	35	36	6w
CgA	Clarno-Crossplain complex, 0 to 2 percent slopes	7.63	4.81	83	54	2c
EdA	Delmont-Enet loams, 0 to 2 percent slopes	5.57	3.51	51	39	4s
Wo	Worthing silty clay loam, 0 to 1 percent slopes	4.66	2.94	31	10	5w
Ct	Crossplain-Tetonka complex	0.35	0.22	73	26	2w
TOTALS		158.68(*)	100%	78.93	62.16	2.63

(*) Total acres may differ in the second decimal compared to the sum of each acreage soil. This is due to a round error because we only show the acres of each soil with two decimal.





 Boundary

SOIL CODE	SOIL DESCRIPTION	ACRES	%	CPI	NCCPI	CAP
CfA	Clarno-Bonilla loams, 0 to 2 percent slopes	111.29	73.61	88	68	2c
EgC	Ethan-Clarno loams, 6 to 9 percent slopes	18.02	11.92	65	64	4e
Bo	Bon loam, channeled, 0 to 2 percent slopes, frequently flooded	8.37	5.54	35	36	6w
CgA	Clarno-Crossplain complex, 0 to 2 percent slopes	7.14	4.72	83	54	2c
EdA	Delmont-Enet loams, 0 to 2 percent slopes	5.51	3.64	51	39	4s
Wo	Worthing silty clay loam, 0 to 1 percent slopes	0.51	0.34	31	10	5w
Ct	Crossplain-Tetonka complex	0.35	0.23	73	26	2w
TOTALS		151.19(*)	100%	80.51	63.74	2.54

(*) Total acres may differ in the second decimal compared to the sum of each acreage soil. This is due to a round error because we only show the acres of each soil with two decimal.

