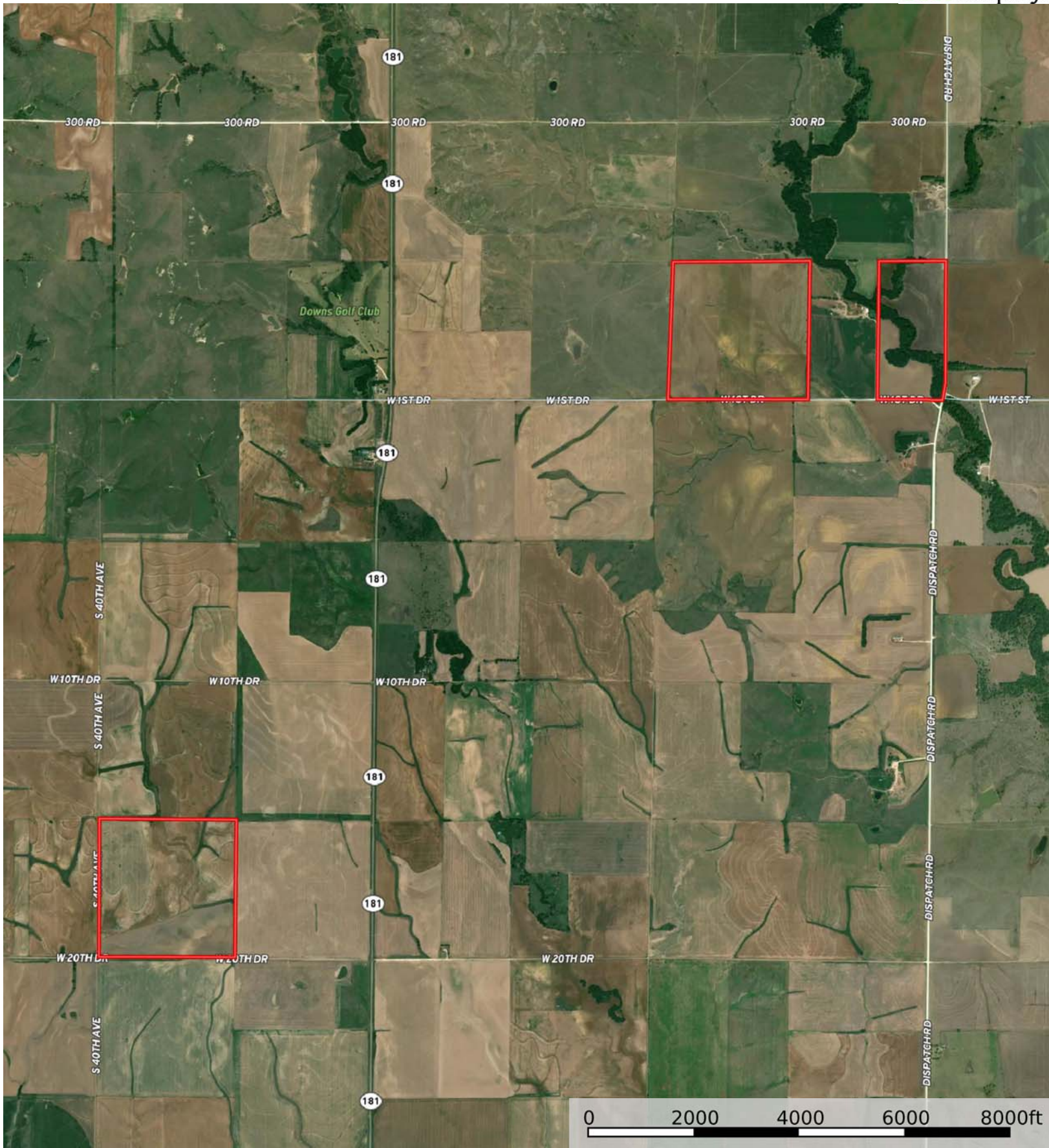



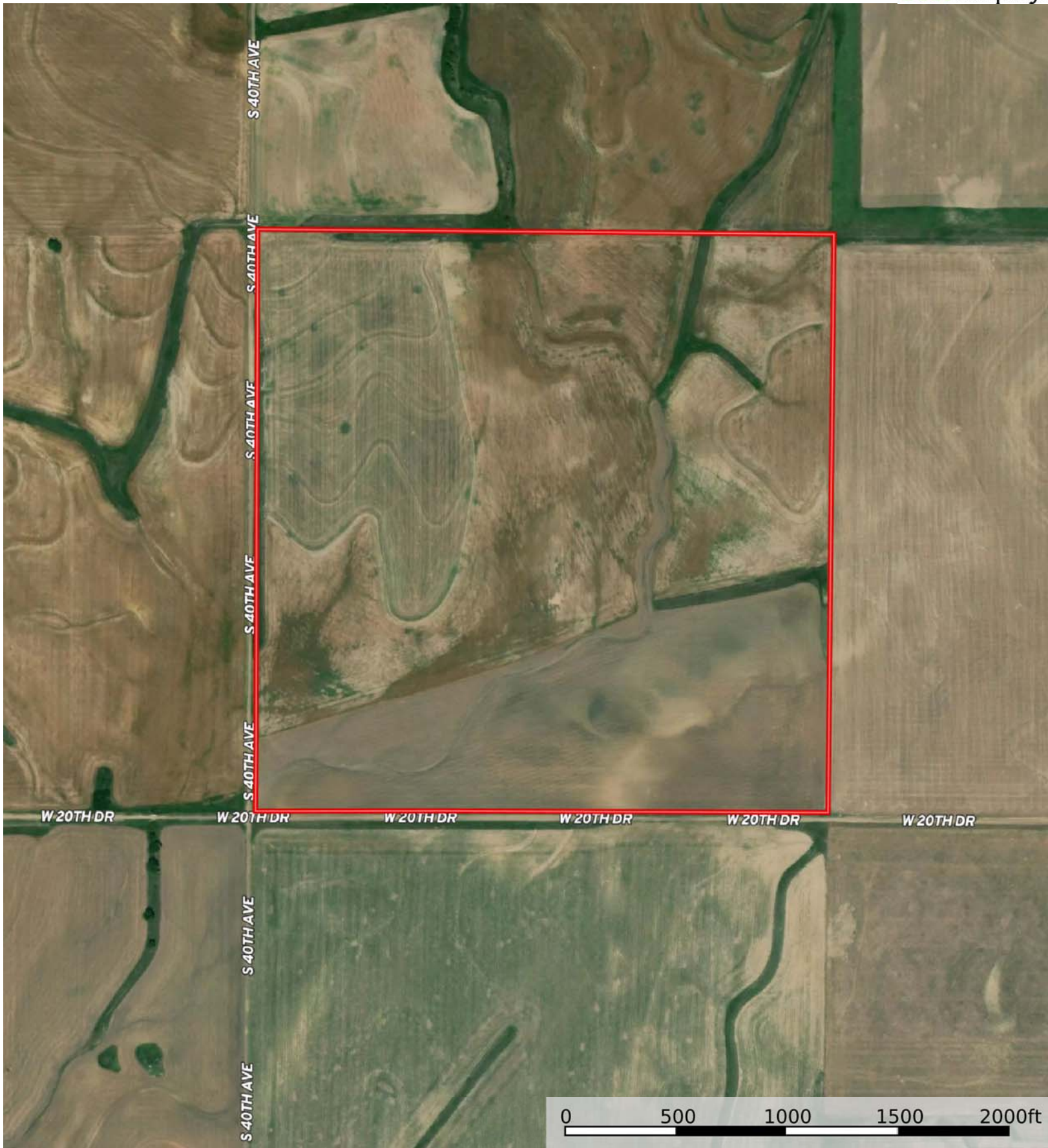
 Boundary



 Boundary

L-2200327

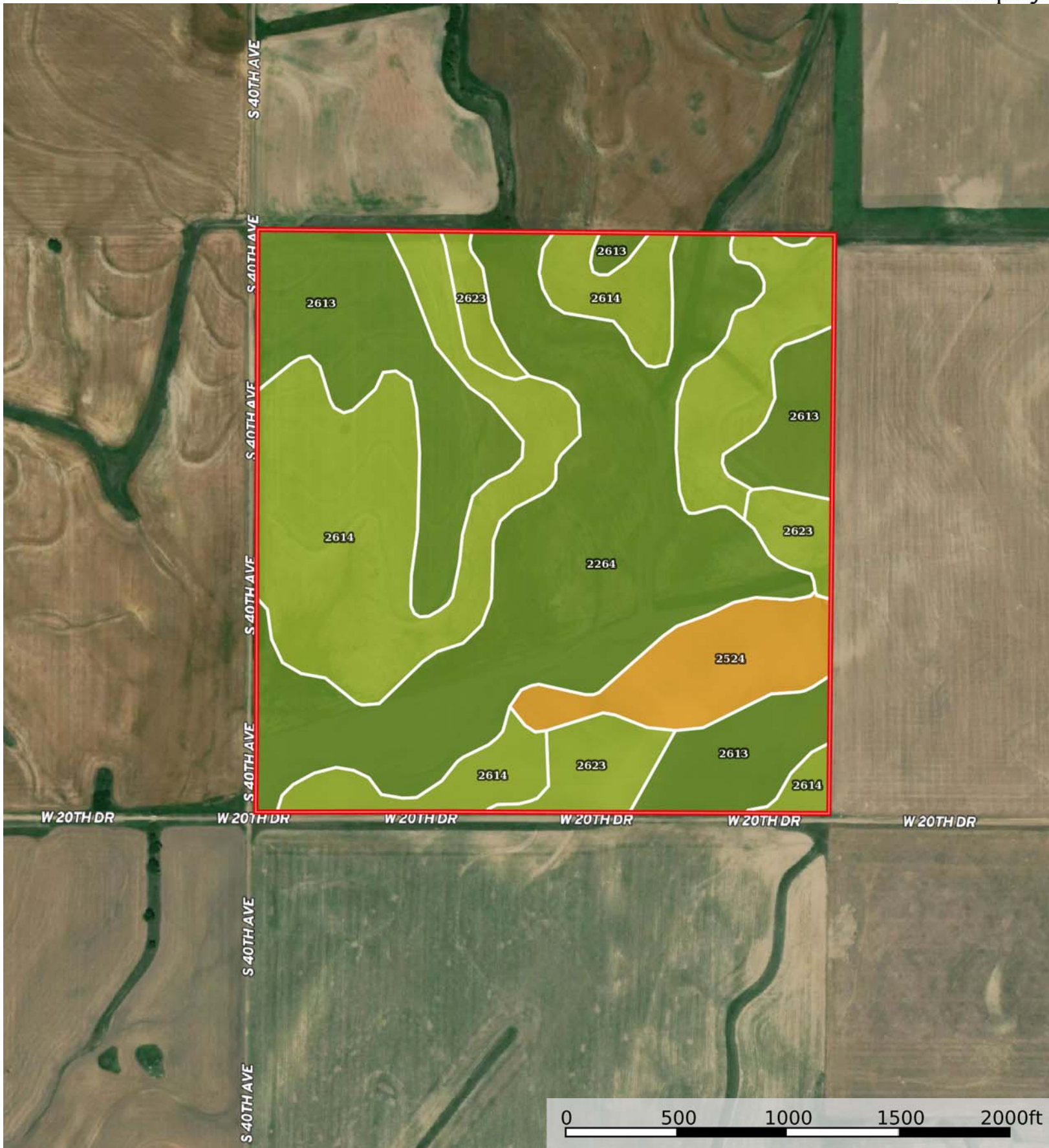
Osborne County, Smith County, Kansas, 400 AC +/-



 Boundary

L-2200327

Osborne County, Smith County, Kansas, 400 AC +/-



Boundary

|  Boundary 156.1 ac

SOIL CODE	SOIL DESCRIPTION	ACRES	%	CPI	NCCPI	CAP
2614	Harney silt loam, 3 to 7 percent slopes	53.33	34.16	0	69	3e
2264	Tobin and Roxbury silt loams, occasionally flooded	49.6	31.77	0	79	2w
2613	Harney silt loam, 1 to 3 percent slopes	32.23	20.65	0	70	2e
2524	Armo-Bogue complex, 7 to 20 percent slopes	10.97	7.03	0	46	6e
2623	Harney-Mento complex, 3 to 7 percent slopes	9.97	6.39	0	66	3e
TOTALS		156.1(*)	100%	-	70.58	2.69

(*) Total acres may differ in the second decimal compared to the sum of each acreage soil. This is due to a round error because we only show the acres of each soil with two decimal.

Capability Legend

Increased Limitations and Hazards

Decreased Adaptability and Freedom of Choice Users

Land, Capability


	1	2	3	4	5	6	7	8
'Wild Life'	•	•	•	•	•	•	•	•
Forestry	•	•	•	•	•	•	•	
Limited	•	•	•	•	•	•	•	
Moderate	•	•	•	•	•	•		
Intense	•	•	•	•	•			
Limited	•	•	•	•				
Moderate	•	•	•					
Intense	•	•						
Very Intense	•							

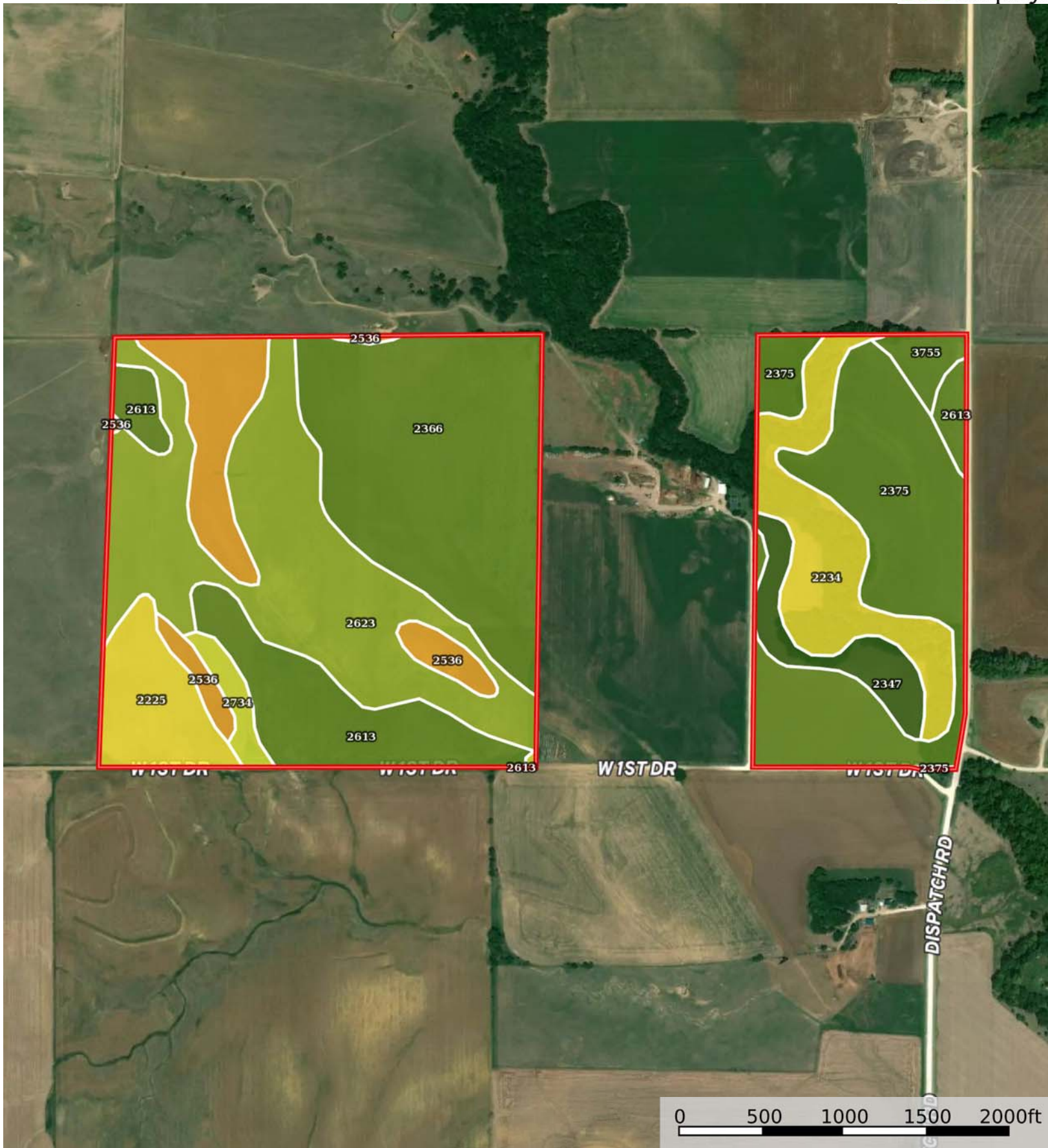
Grazing Cultivation

(c) climatic limitations (e) susceptibility to erosion

(s) soil limitations within the rooting zone (w) excess of water



 Boundary



 Boundary

|  All Polygons 235.64 ac

SOIL CODE	SOIL DESCRIPTION	ACRES	%	CPI	NCCPI	CAP
2366	New Cambria silty clay, rarely flooded	51.59	21.9	0	56	2s
2623	Harney-Mento complex, 3 to 7 percent slopes	51.33	21.79	0	66	3e
2375	Roxbury silt loam, rarely flooded	42.88	18.2	0	80	2e
2613	Harney silt loam, 1 to 3 percent slopes	24.43	10.37	0	70	2e
2234	Roxbury silt loam, channeled	20.71	8.79	0	49	5w
2536	Bogue clay, 3 to 15 percent slopes	17.67	7.5	0	29	6e
2225	New Cambria silty clay, frequently flooded	12.38	5.25	0	47	5w
2347	McCook silt loam, rarely flooded	8.24	3.5	0	56	1
3755	Hord silt loam, rarely flooded	3.2	1.36	0	79	2c
2734	Nuckolls silt loam, 7 to 12 percent slopes	3.09	1.31	0	77	4e
2592	Corinth silty clay loam, 3 to 7 percent slopes	0.12	0.05	0	43	4e
TOTALS		235.6 1(*)	100%	-	61.47	2.93

(*) Total acres may differ in the second decimal compared to the sum of each acreage soil. This is due to a round error because we only show the acres of each soil with two decimal.

|  Boundary 158.37 ac

SOIL CODE	SOIL DESCRIPTION	ACRES	%	CPI	NCCPI	CAP
2366	New Cambria silty clay, rarely flooded	51.59	32.58	0	56	2s
2623	Harney-Mento complex, 3 to 7 percent slopes	51.33	32.42	0	66	3e
2613	Harney silt loam, 1 to 3 percent slopes	22.19	14.01	0	70	2e
2536	Bogue clay, 3 to 15 percent slopes	17.67	11.16	0	29	6e
2225	New Cambria silty clay, frequently flooded	12.38	7.82	0	47	5w
2734	Nuckolls silt loam, 7 to 12 percent slopes	3.09	1.95	0	77	4e
2592	Corinth silty clay loam, 3 to 7 percent slopes	0.12	0.08	0	43	4e
TOTALS		235.6 1(*)	100%	-	57.89	3.05

(*) Total acres may differ in the second decimal compared to the sum of each acreage soil. This is due to a round error because we only show the acres of each soil with two decimal.

|  Boundary 77.27 ac

SOIL CODE	SOIL DESCRIPTION	ACRES	%	CPI	NCCPI	CAP
2375	Roxbury silt loam, rarely flooded	42.88	55.5	0	80	2e
2234	Roxbury silt loam, channeled	20.71	26.81	0	49	5w
2347	McCook silt loam, rarely flooded	8.24	10.67	0	56	1
3755	Hord silt loam, rarely flooded	3.2	4.14	0	79	2c
2613	Harney silt loam, 1 to 3 percent slopes	2.24	2.9	0	70	2e

TOTALS		235.6 1(*)	100%	-	68.81	2.7
--------	--	---------------	------	---	-------	-----









(*) Total acres may differ in the second decimal compared to the sum of each acreage soil. This is due to a round error because we only show the acres of each soil with two decimal.

Capability Legend

Increased Limitations and Hazards

Decreased Adaptability and Freedom of Choice Users

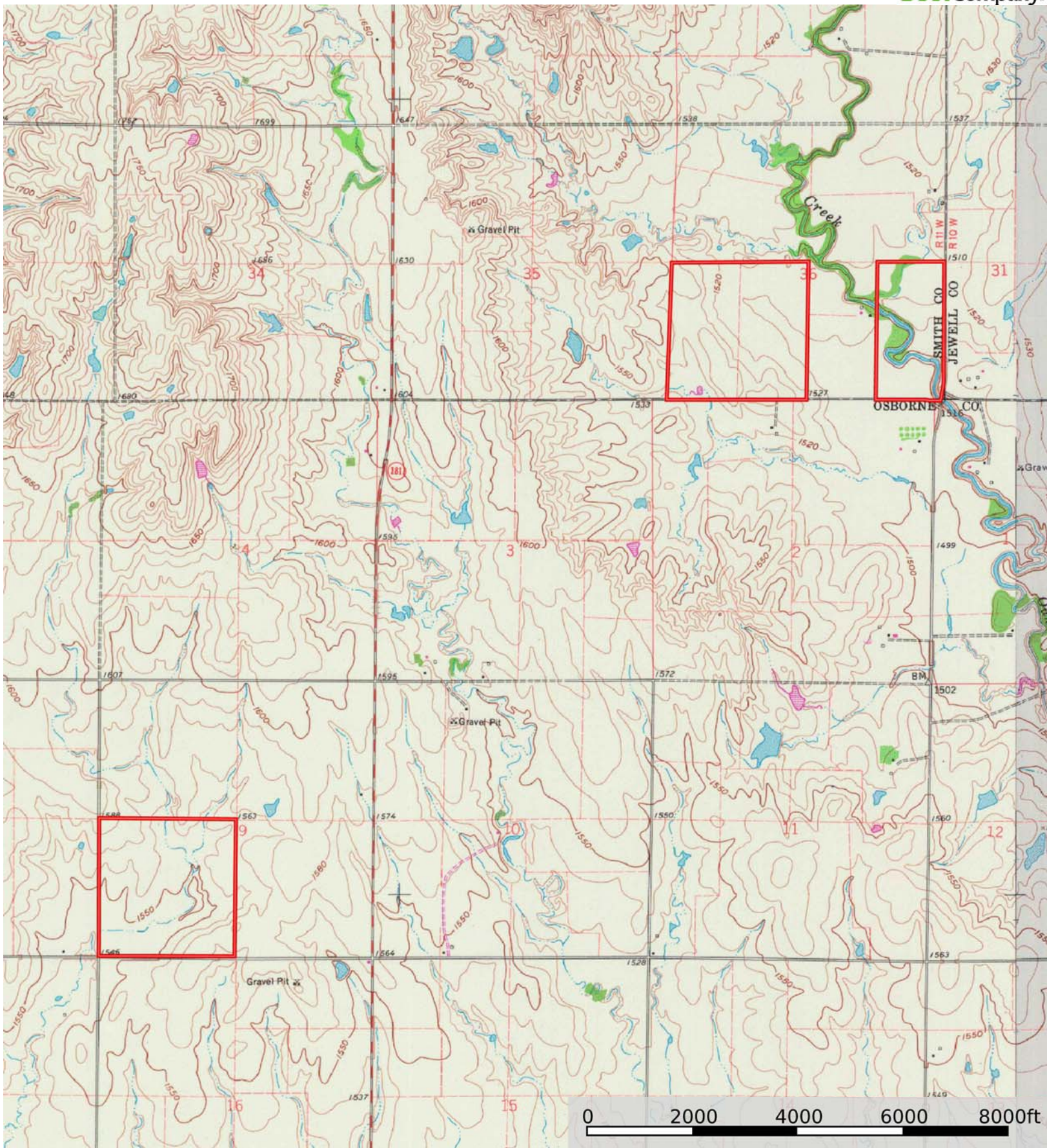
Land, Capability


								
	1	2	3	4	5	6	7	8
'Wild Life'	•	•	•	•	•	•	•	•
Forestry	•	•	•	•	•	•	•	
Limited	•	•	•	•	•	•	•	
Moderate	•	•	•	•	•	•		
Intense	•	•	•	•	•			
Limited	•	•	•	•				
Moderate	•	•	•					
Intense	•	•						
Very Intense	•							

Grazing Cultivation

(c) climatic limitations (e) susceptibility to erosion

(s) soil limitations within the rooting zone (w) excess of water



 Boundary

