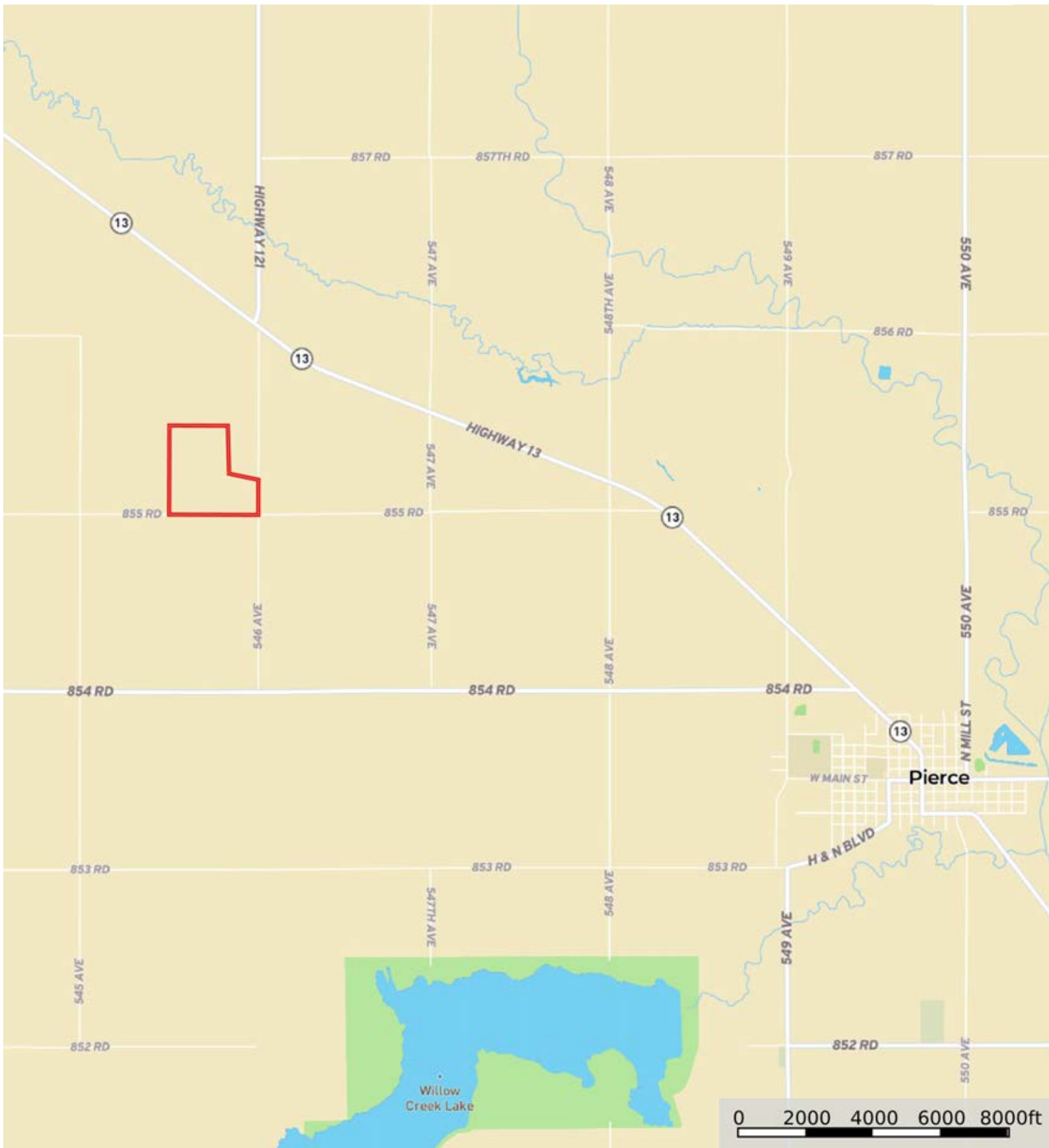



L-2200512

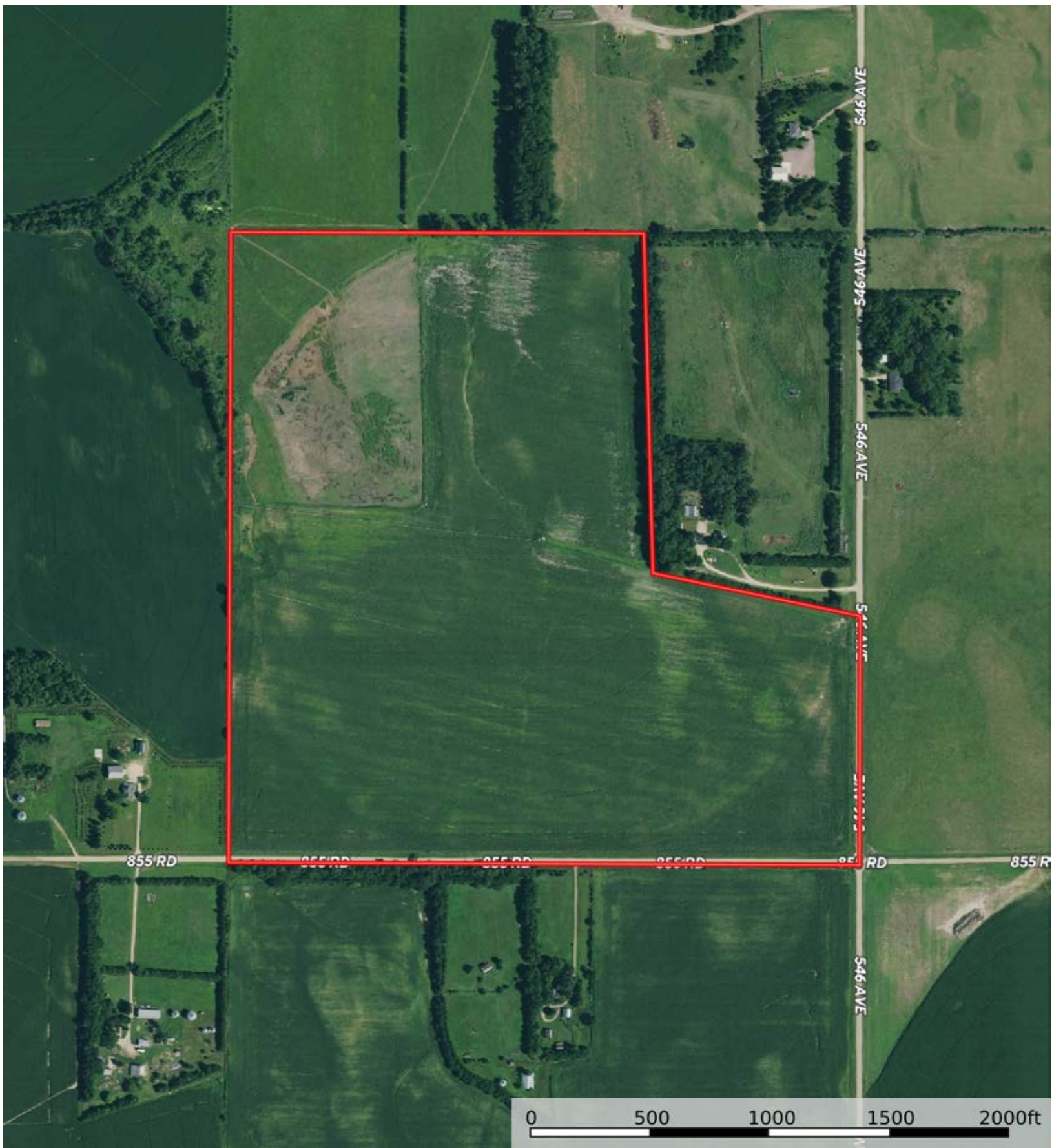
Pierce County, Nebraska, 128.83 AC +/-




 Boundary

L-2200512

Pierce County, Nebraska, 128.83 AC +/-



 Boundary




The information contained herein was obtained from sources deemed to be reliable. MapRight Services makes no warranties or guarantees as to the completeness or accuracy thereof.



L-2200512

Pierce County, Nebraska, 128.83 AC +/-



 Boundary



The information contained herein was obtained from sources deemed to be reliable. MapRight Services makes no warranties or guarantees as to the completeness or accuracy thereof.

|  Boundary 129.44 ac

SOIL CODE	SOIL DESCRIPTION	ACRES	%	CPI	NCCPI	CAP
8540	Ovina fine sandy loam, rarely flooded	54.49	42.1	0	61	2w
6584	Ortello fine sandy loam, terrace, 0 to 2 percent slopes	32.45	25.07	0	46	2e
6703	Thurman loamy fine sand, 2 to 6 percent slopes	19.95	15.41	45	49	4e
6369	Orwet loam, rarely flooded	18.19	14.05	0	35	4w
4553	Elsmere loamy fine sand, 0 to 3 percent slopes	4.3	3.32	0	38	4w
6715	Thurman-Valentine complex, undulating	0.06	0.05	0	31	4e
TOTALS		129.43(*)	100%	6.94	50.96	2.66

(\*) Total acres may differ in the second decimal compared to the sum of each acreage soil. This is due to a round error because we only show the acres of each soil with two decimal.

