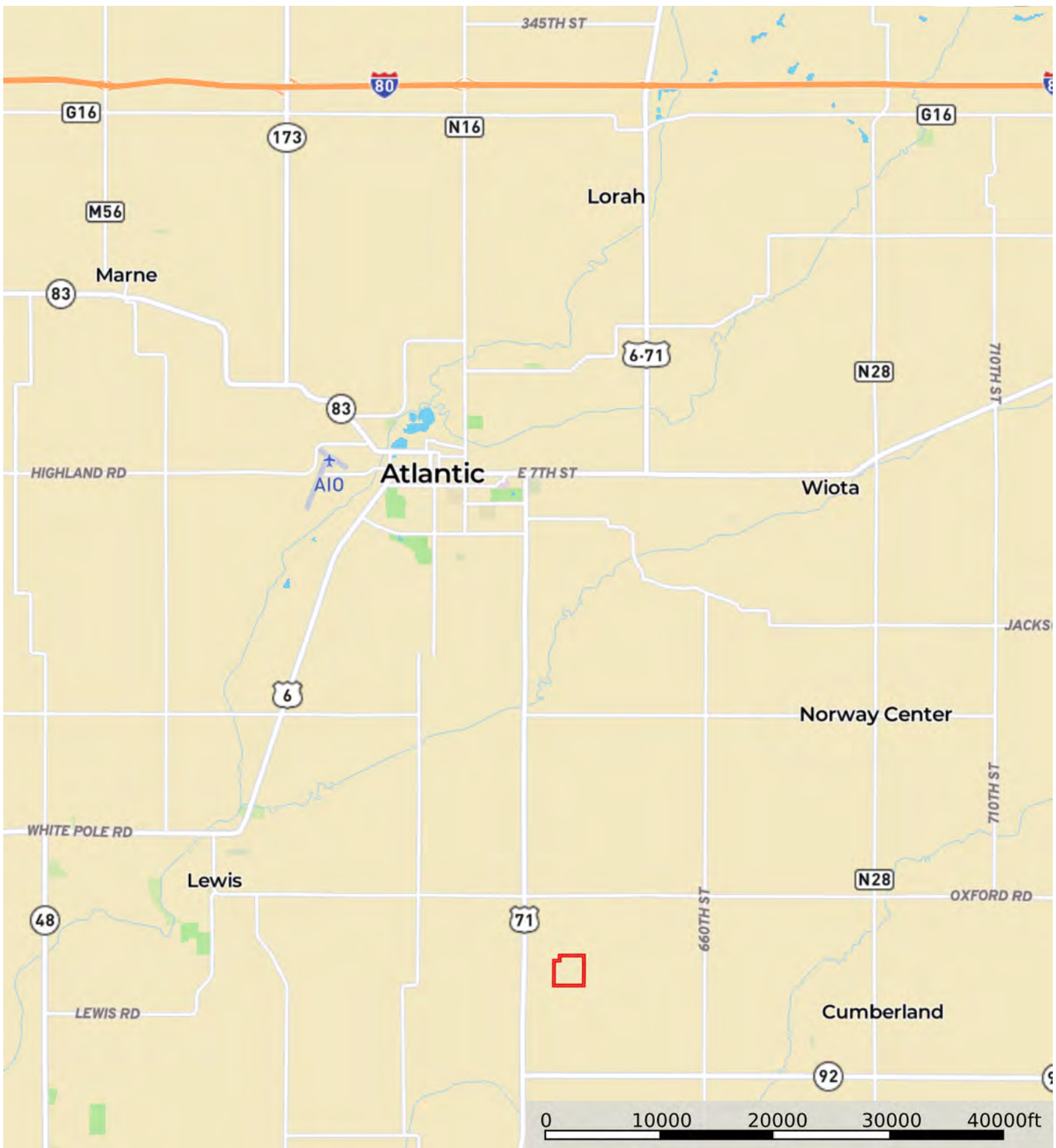


L2200558

Cass County, Iowa, 155 AC +/-



 Boundary

L2200558

Cass County, Iowa, 155 AC +/-



 Boundary



 Boundary

Boundary 153.51 ac

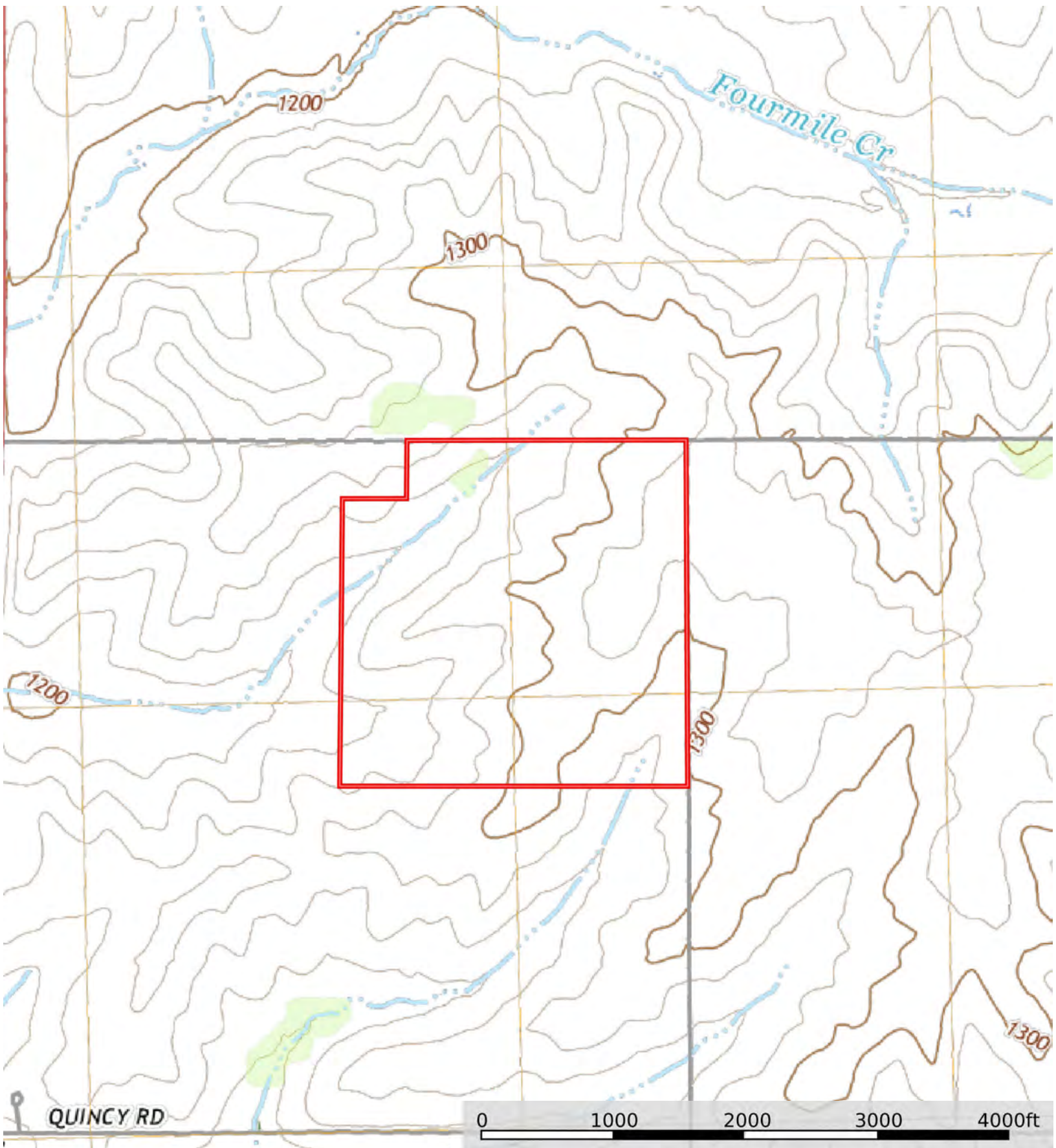
SOIL CODE	SOIL DESCRIPTION	ACRES	%	CSR2	CPI	NCCPI	CAP
9C2	Marshall silty clay loam, 5 to 9 percent slopes, eroded	54.53	35.52	87.0	0	92	3e
431B	Judson-Ackmore-Colo, overwash complex, 1 to 5 percent slopes	31.35	20.42	81.0	0	86	2e
9B	Marshall silty clay loam, 2 to 5 percent slopes	30.73	20.02	95.0	0	89	2e
9C3	Marshall silty clay loam, 5 to 9 percent slopes, severely eroded	14.35	9.35	82.0	0	78	3e
99D2	Exira silty clay loam, 9 to 14 percent slopes, eroded	10.33	6.73	59.0	0	87	3e
Z82D3	Adair-Shelby complex, MLRA 107B, 9 to 14 percent slopes, severely eroded	10.11	6.59	32.0	0	57	6e
Z8B	Judson silty clay loam, deep loess, 2 to 5 percent slopes	2.09	1.36	92.0	0	96	2e
99D3	Exira silty clay loam, 9 to 14 percent slopes, severely eroded	0.02	0.01	52.0	0	79	4e
TOTALS		153.5(*)	100%	81.47	-	86.28	2.78

(*) Total acres may differ in the second decimal compared to the sum of each acreage soil. This is due to a round error because we only show the acres of each soil with two decimal.



L2200558

Cass County, Iowa, 155 AC +/-



Boundary