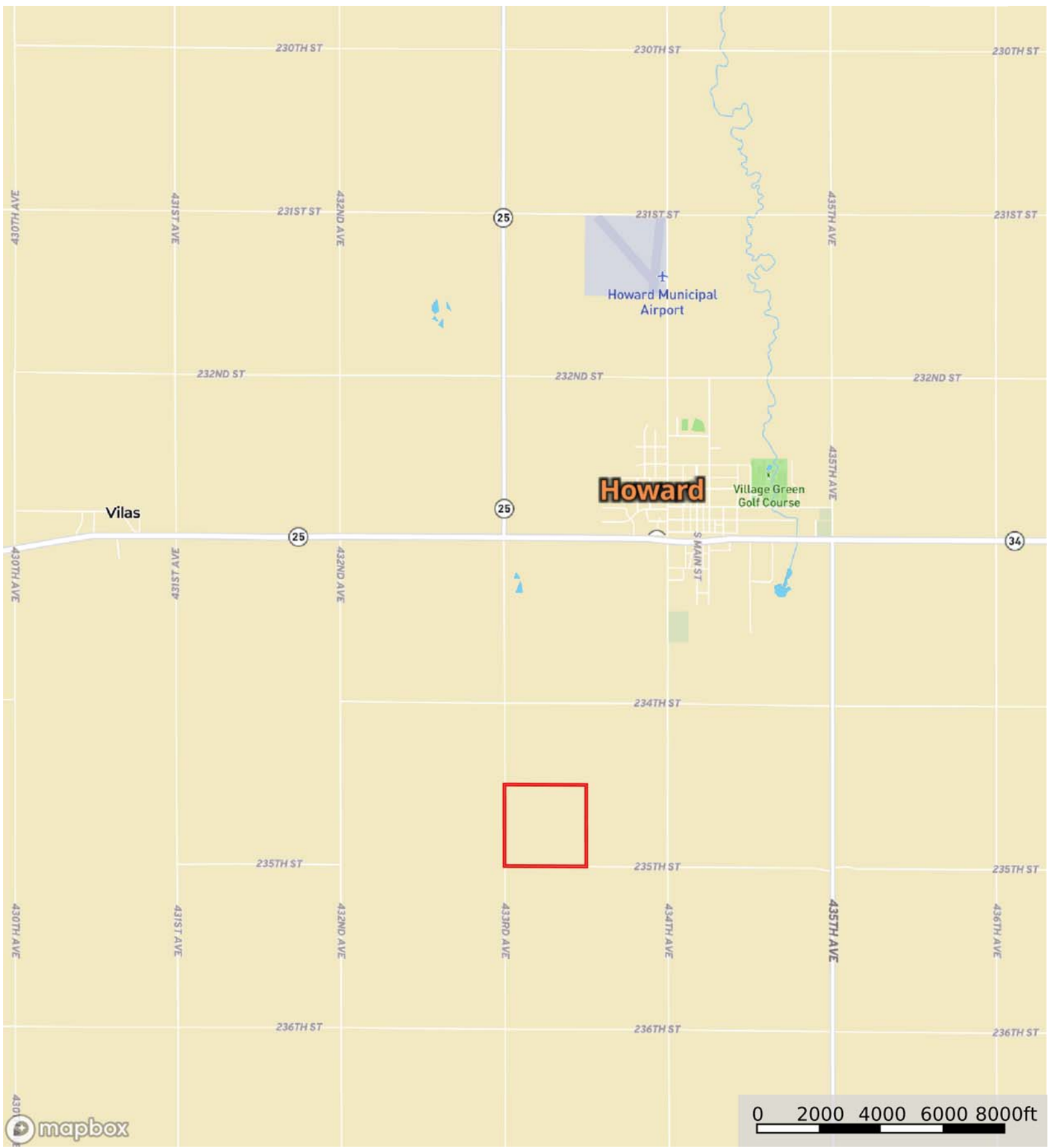


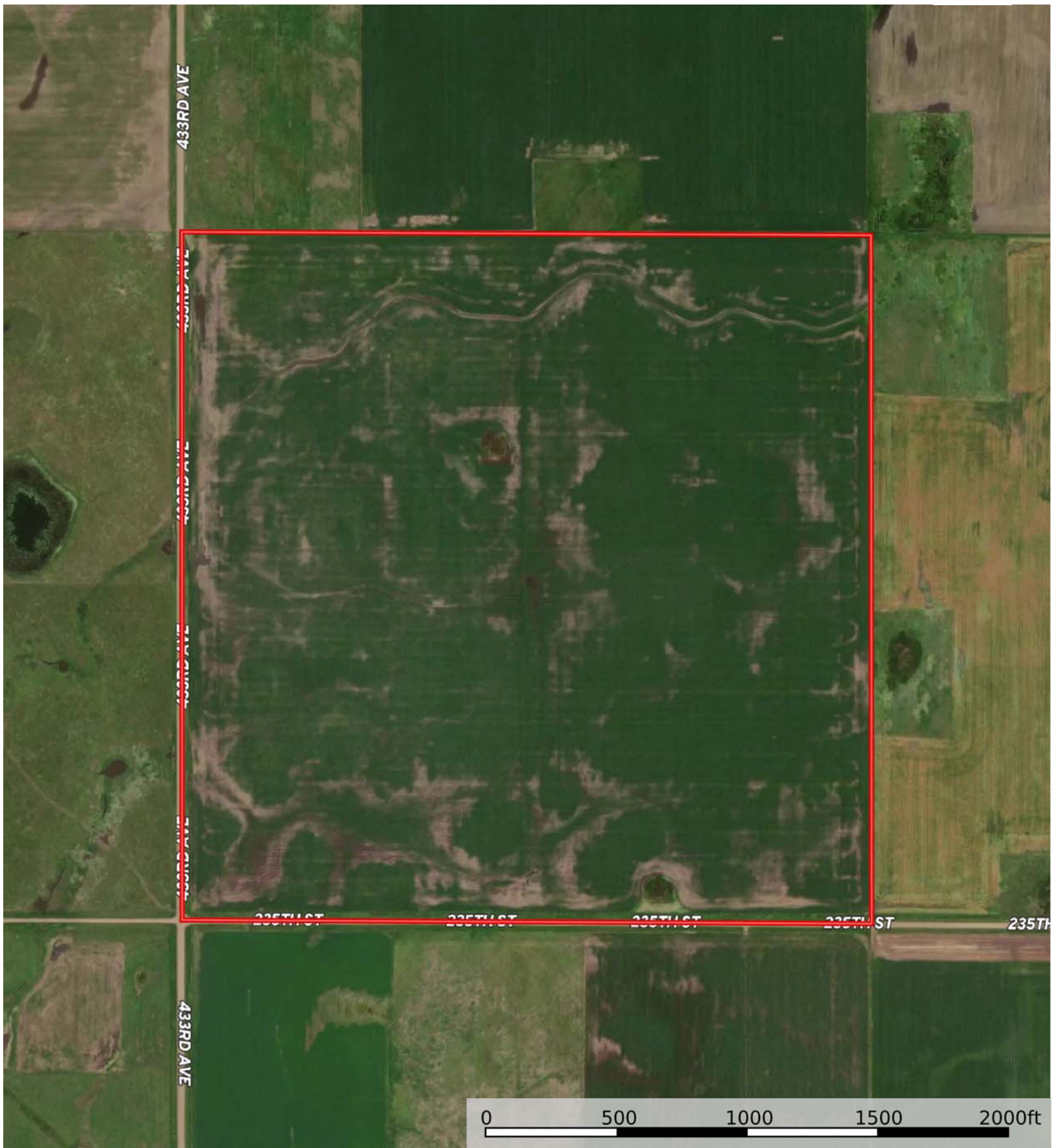
L-2300113
Miner County, South Dakota, 160 AC +/-




 Boundary

L-2300113

Miner County, South Dakota, 160 AC +/-



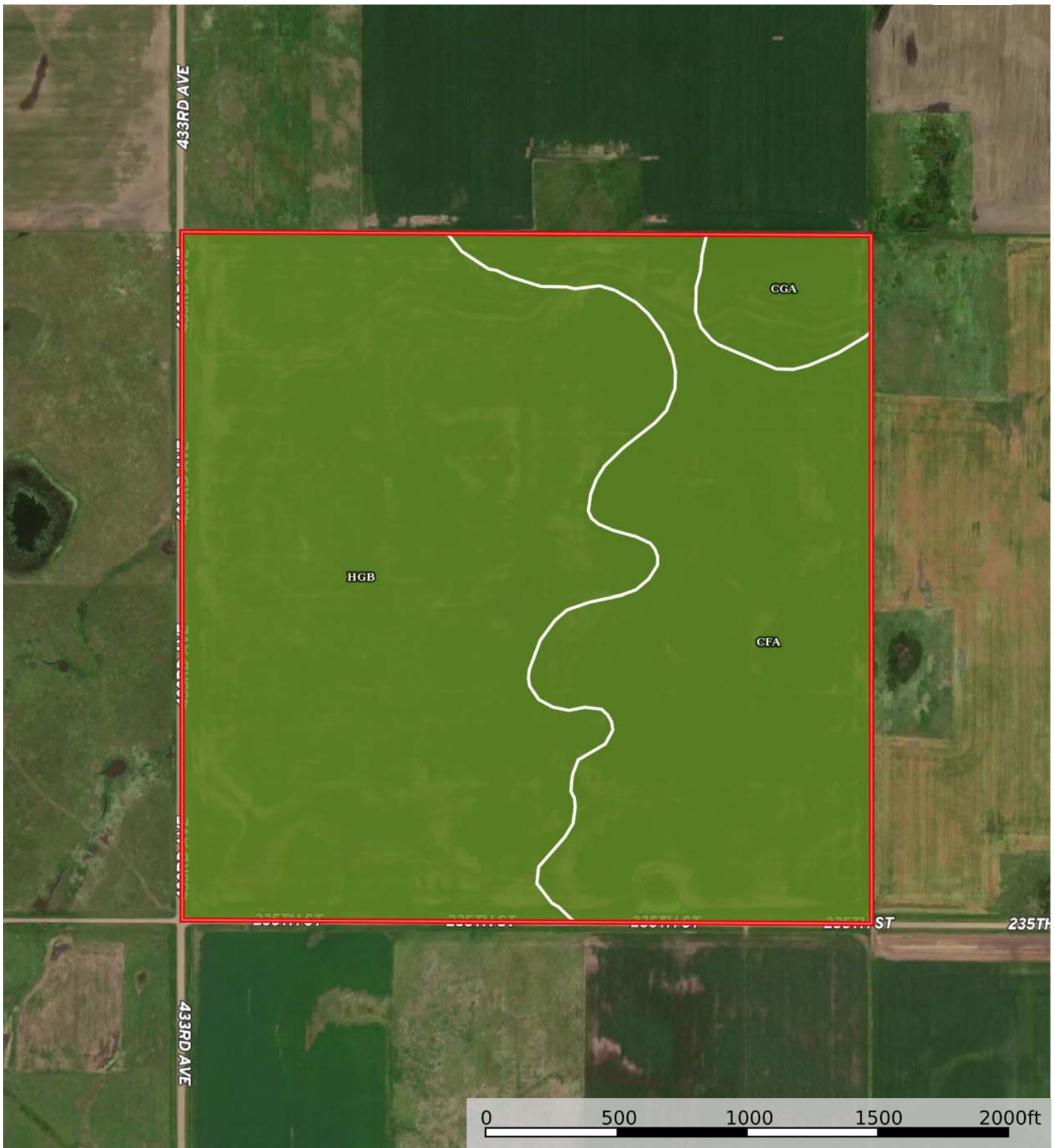
 Boundary




The information contained herein was obtained from sources deemed to be reliable. MapRight Services makes no warranties or guarantees as to the completeness or accuracy thereof.

L-2300113

Miner County, South Dakota, 160 AC +/-



 Boundary



The information contained herein was obtained from sources deemed to be reliable. MapRight Services makes no warranties or guarantees as to the completeness or accuracy thereof.

Boundary 159.64 ac

SOIL CODE	SOIL DESCRIPTION	ACRES	%	CPI	NCCPI	CAP
HgB	Houdek-Dudley-Tetonka complex, 0 to 6 percent slopes	94.62	59.27	58	40	2e
CfA	Clarno-Bonilla loams, 0 to 2 percent slopes	58.11	36.4	88	68	2c
CgA	Clarno-Crossplain complex, 0 to 2 percent slopes	6.91	4.33	83	54	2c
TOTALS		159.63(*)	100%	70.01	50.8	2.0

(*) Total acres may differ in the second decimal compared to the sum of each acreage soil. This is due to a round error because we only show the acres of each soil with two decimal.

