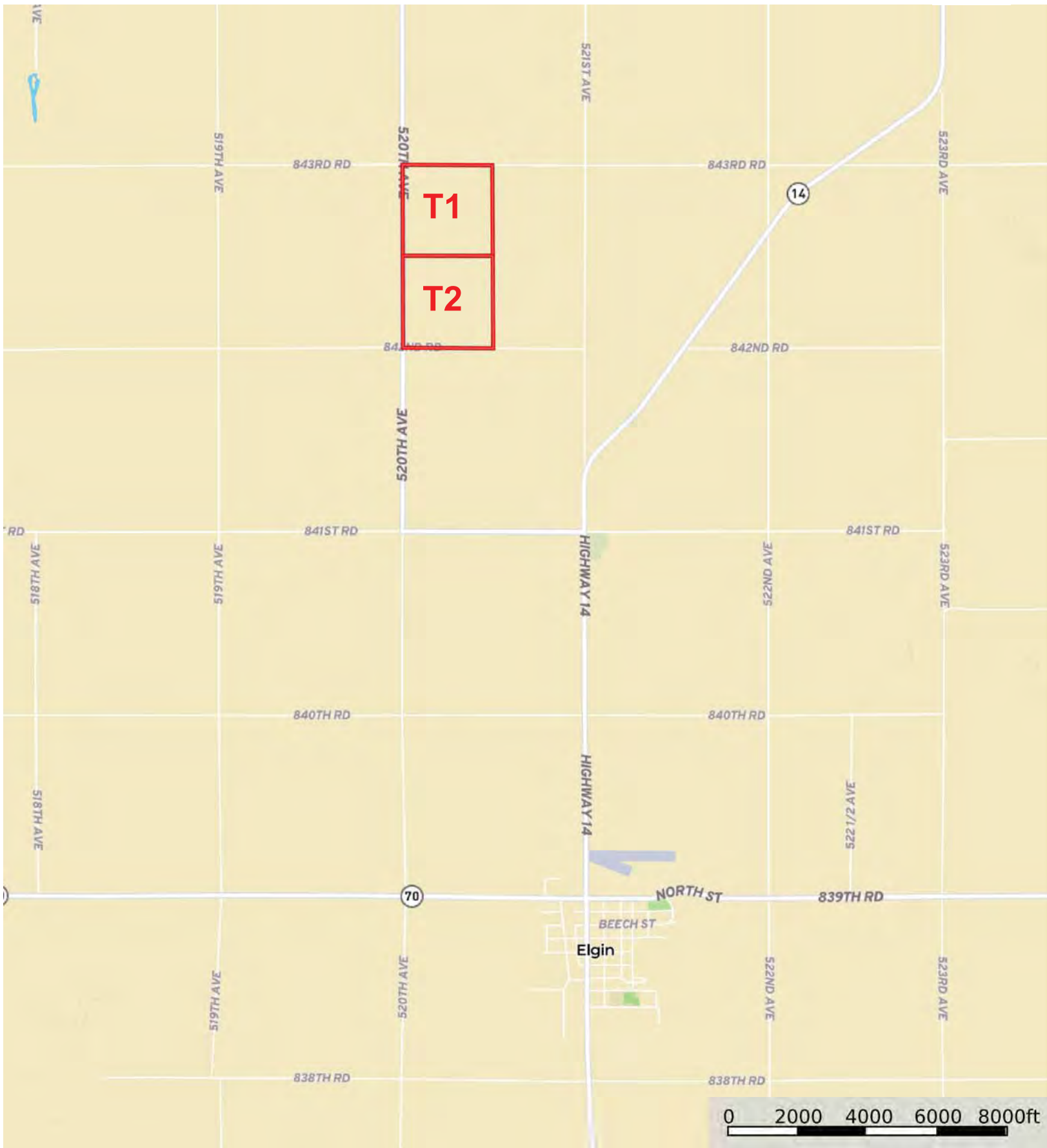


L-2300115

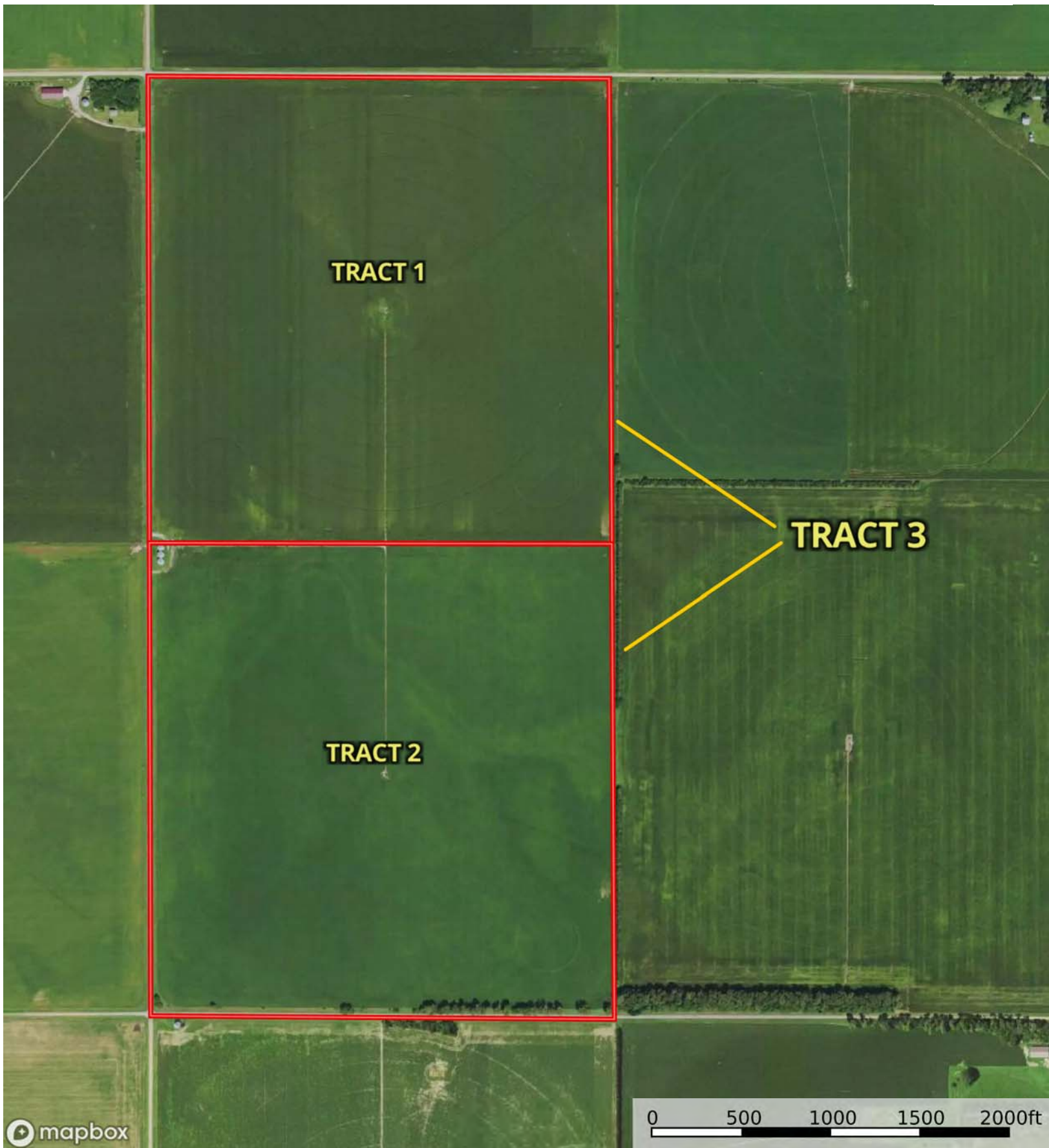
Antelope County, Nebraska, 313.14 AC +/-



 Boundary

L-2300115

Antelope County, Nebraska, 313.14 AC +/-



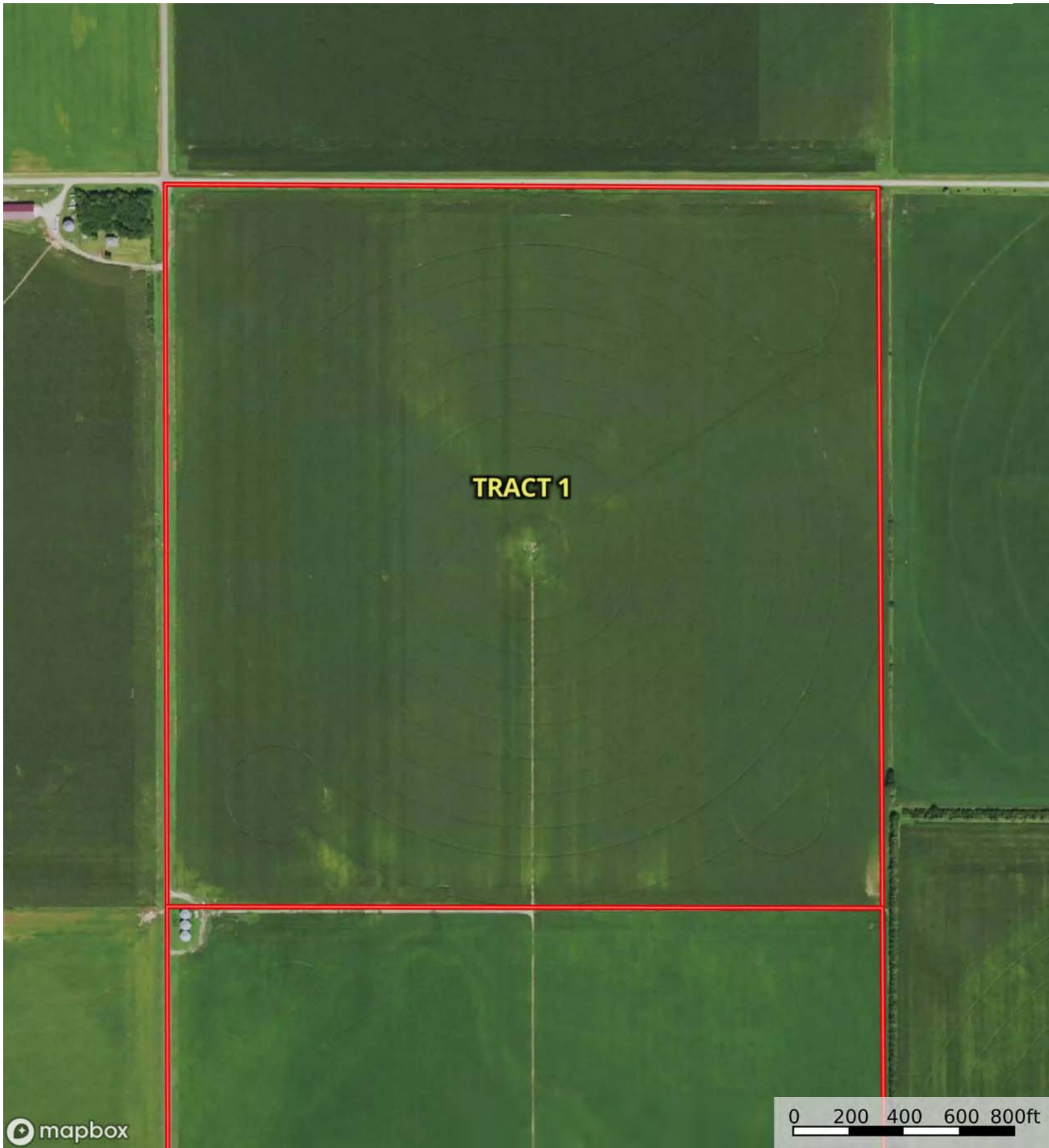
mapbox

0 500 1000 1500 2000ft

→ Direction □ Boundary

L-2300115

Antelope County, Nebraska, 313.14 AC +/-



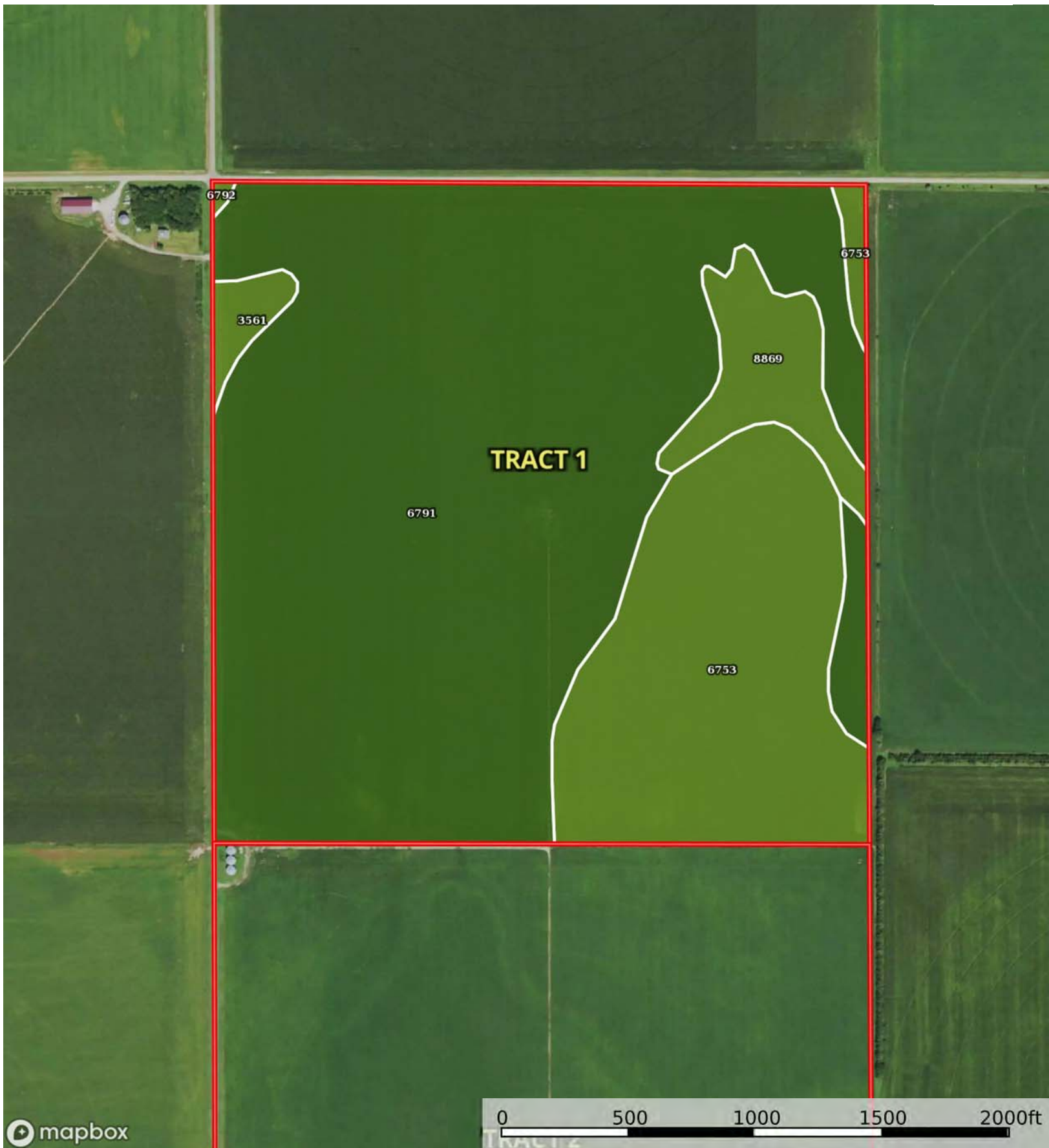
mapbox

0 200 400 600 800ft

Boundary

L-2300115

Antelope County, Nebraska, 313.14 AC +/-



mapbox

0 500 1000 1500 2000ft

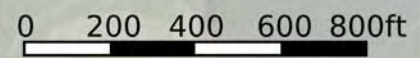
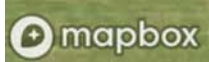
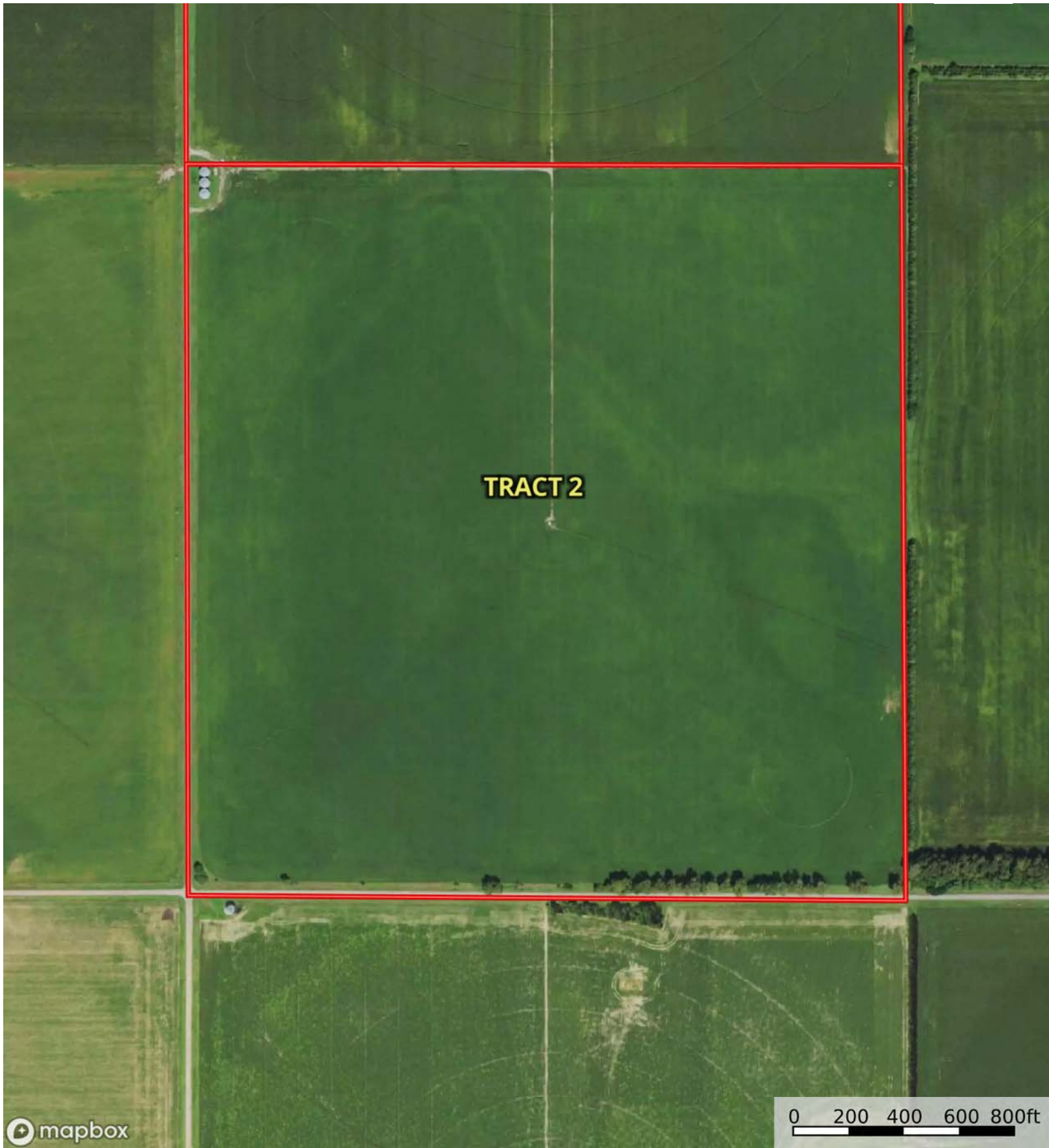
Boundary


|  Boundary 154.87 ac

SOIL CODE	SOIL DESCRIPTION	ACRES	%	CPI	NCCPI	CAP
6791	Loretto loam, 0 to 2 percent slopes	108.4 1	70.0	0	72	1
6753	Nora silt loam, 2 to 6 percent slopes	36.4	23.5	52	79	2e
8869	Hord silt loam, cool, 0 to 2 percent slopes	7.85	5.07	0	81	2e
3561	Hobbs silt loam, 0 to 2 percent slopes, occasionally flooded, cool	2.02	1.3	0	79	2w
6792	Loretto loam, 2 to 6 percent slopes	0.19	0.12	0	72	2e
TOTALS		154.8 8(*)	100%	12.22	74.19	1.3

(*) Total acres may differ in the second decimal compared to the sum of each acreage soil. This is due to a round error because we only show the acres of each soil with two decimal.

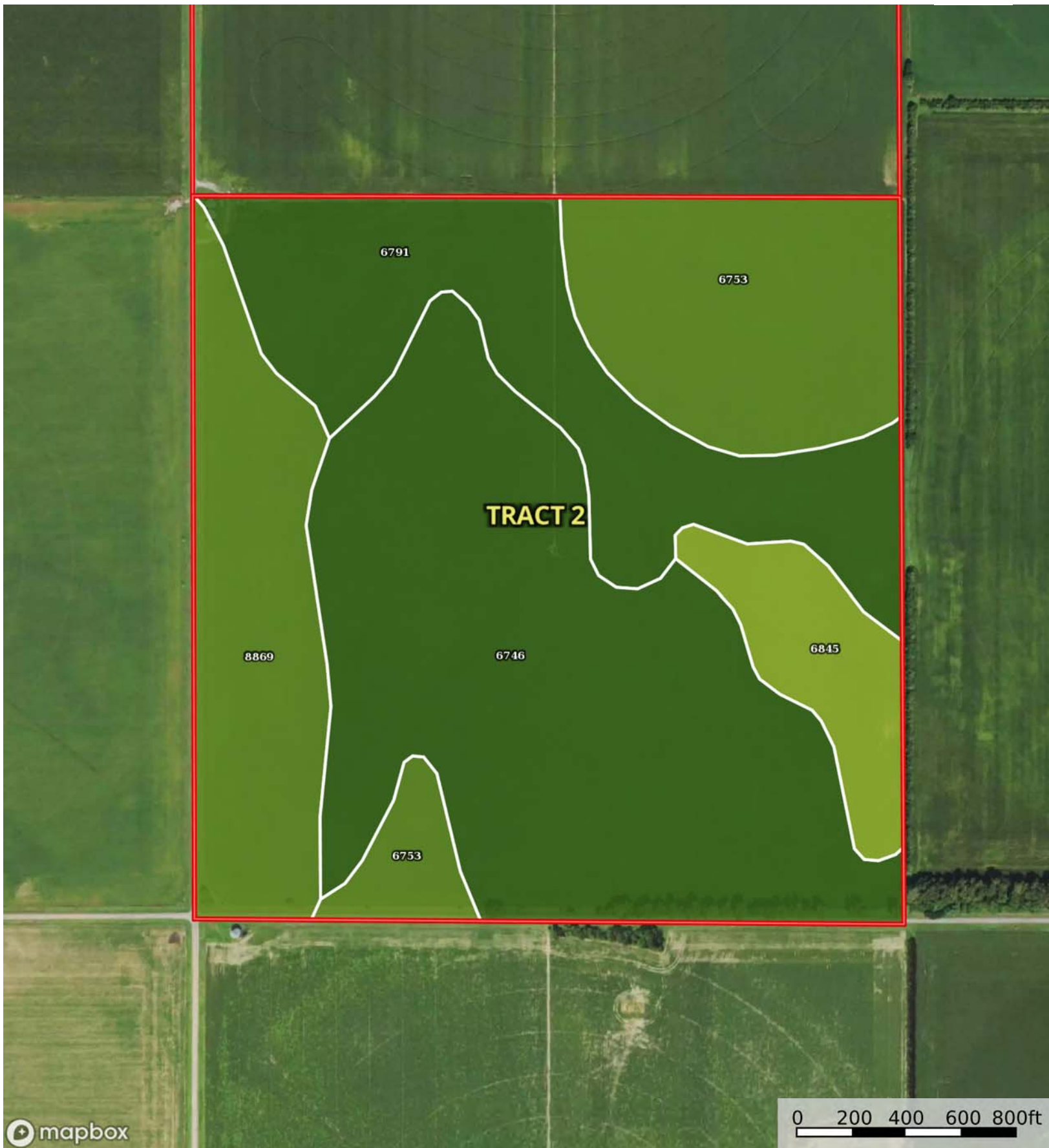




 Boundary

L-2300115

Antelope County, Nebraska, 313.14 AC +/-



mapbox

0 200 400 600 800ft

Boundary

M The information contained herein was obtained from sources deemed to be reliable. MapRight Services makes no warranties or guarantees as to the completeness or accuracy thereof.

|  Boundary 157.98 ac

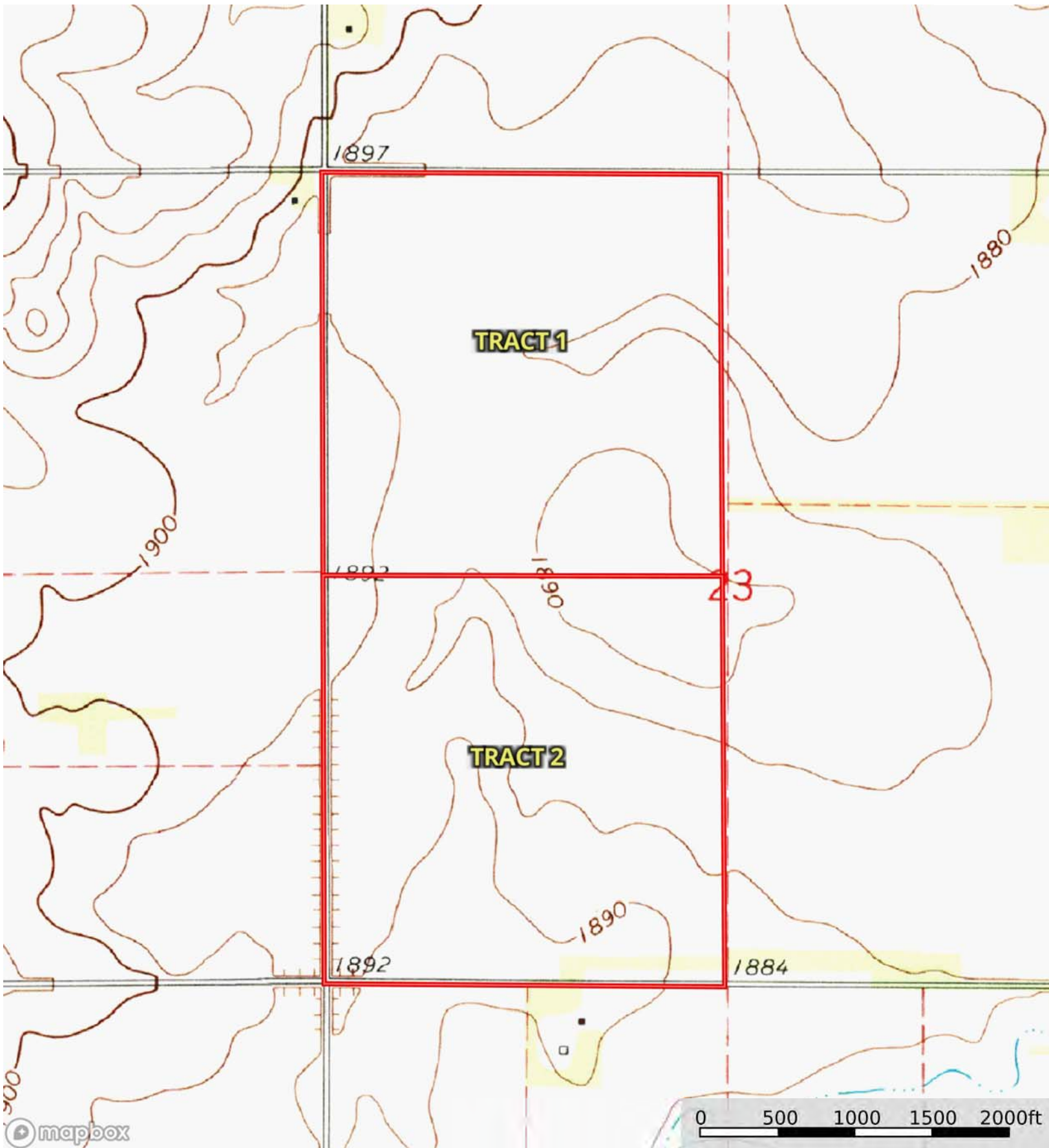
SOIL CODE	SOIL DESCRIPTION	ACRES	%	CPI	NCCPI	CAP
6746	Nora silt loam, 0 to 2 percent slopes	64.76	40.99	51	83	1
6791	Loretto loam, 0 to 2 percent slopes	32.04	20.28	0	72	1
6753	Nora silt loam, 2 to 6 percent slopes	27.66	17.51	52	79	2e
8869	Hord silt loam, cool, 0 to 2 percent slopes	23.4	14.81	0	81	2e
6845	Ortello fine sandy loam, 2 to 6 percent slopes	10.12	6.41	0	65	3e
TOTALS		157.98(*)	100%	30.01	78.62	1.45

(*) Total acres may differ in the second decimal compared to the sum of each acreage soil. This is due to a round error because we only show the acres of each soil with two decimal.



L-2300115

Antelope County, Nebraska, 313.14 AC +/-



Boundary