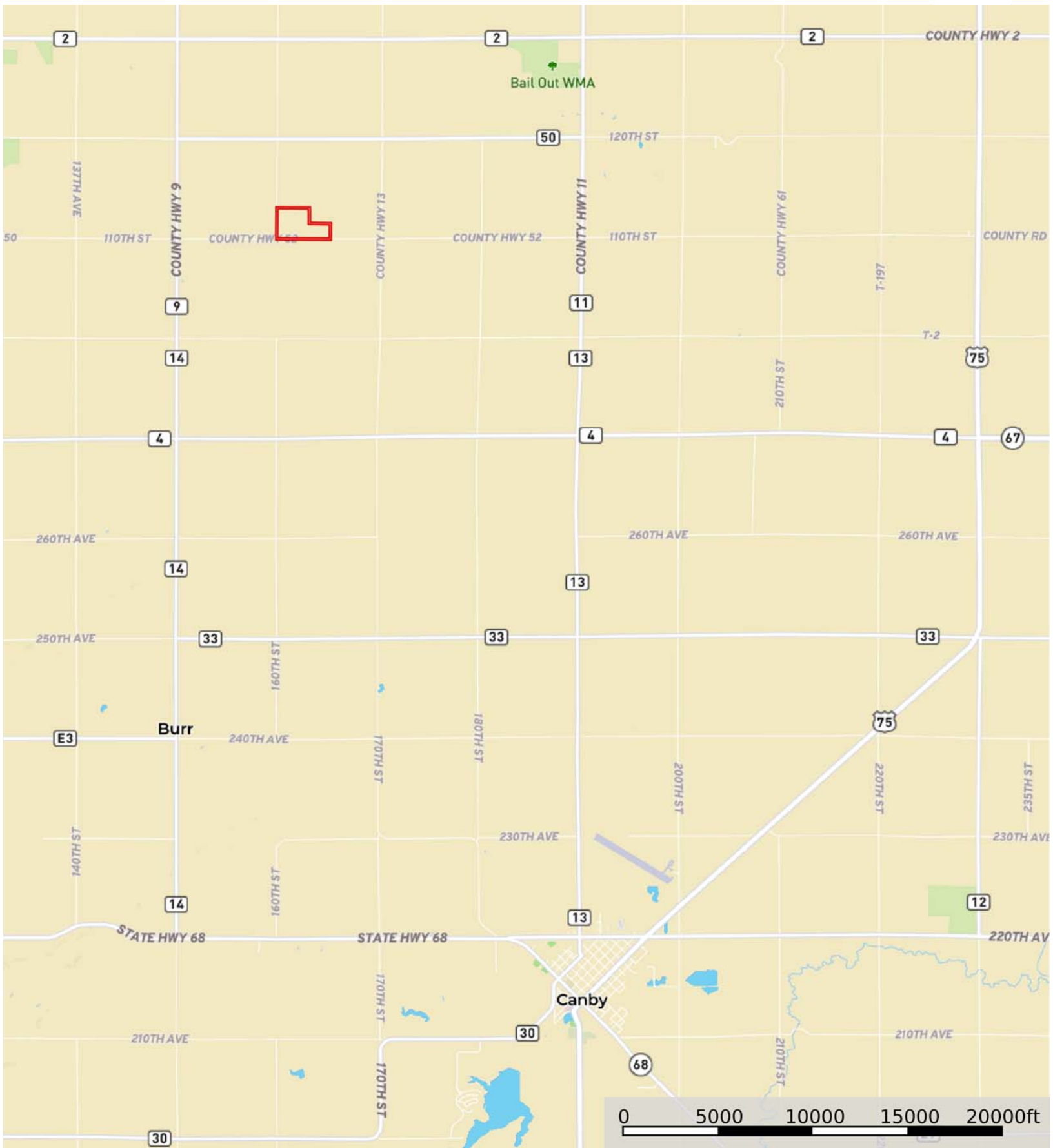


L-2300119

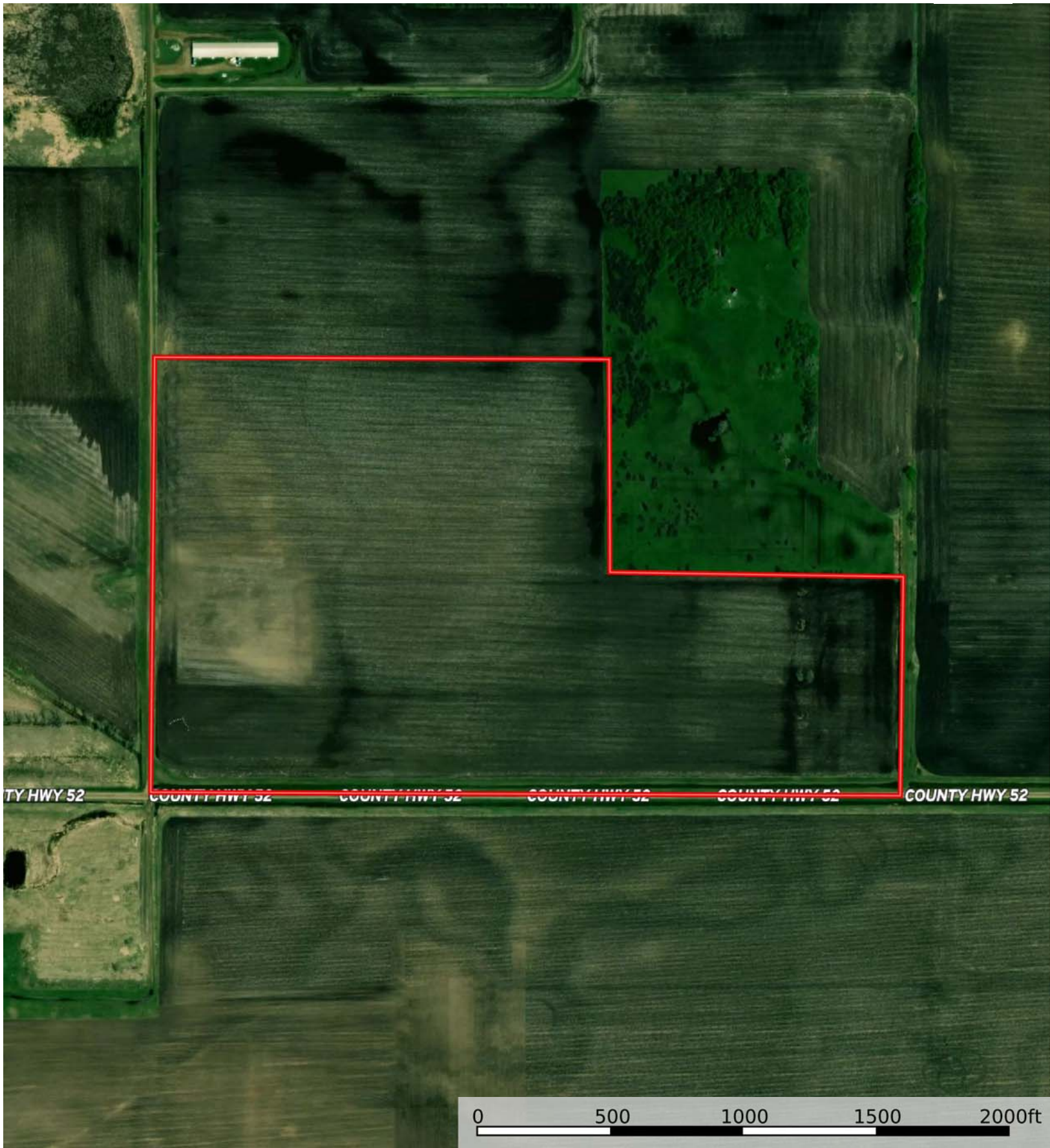
Lac qui Parle County, Minnesota, 86 AC +/-




 Boundary

L-2300119

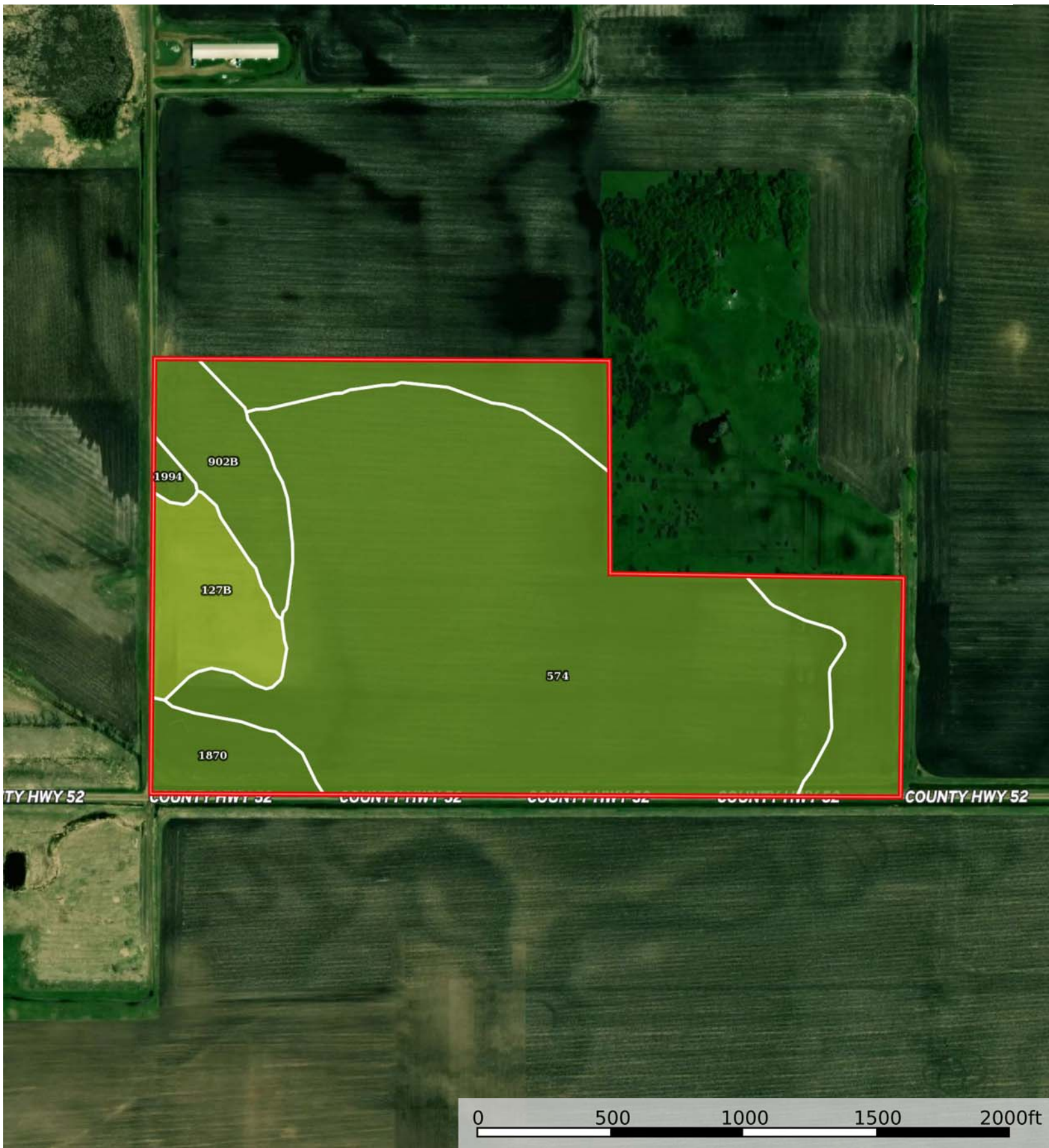
Lac qui Parle County, Minnesota, 86 AC +/-




 Boundary

L-2300119

Lac qui Parle County, Minnesota, 86 AC +/-



 Boundary

|  Boundary 85.97 ac

SOIL CODE	SOIL DESCRIPTION	ACRES	%	CPI	NCCPI	CAP
574	Du Page loam, occasionally flooded	57.58	66.98	90	91	2w
1870	Burr-Calco complex, occasionally flooded	15.88	18.47	85	63	2w
127B	Sverdrup sandy loam, 2 to 6 percent slopes	6.37	7.41	49	42	3e
902B	Hokans-Buse complex, 2 to 6 percent slopes	5.57	6.48	89	65	2e
1994	Embden sandy loam	0.57	0.66	93	64	2s
TOTALS		85.96(*)	100%	86.0	80.34	2.07

(*) Total acres may differ in the second decimal compared to the sum of each acreage soil. This is due to a round error because we only show the acres of each soil with two decimal.

Capability Legend

Increased Limitations and Hazards
Decreased Adaptability and Freedom of Choice Users

Land, Capability

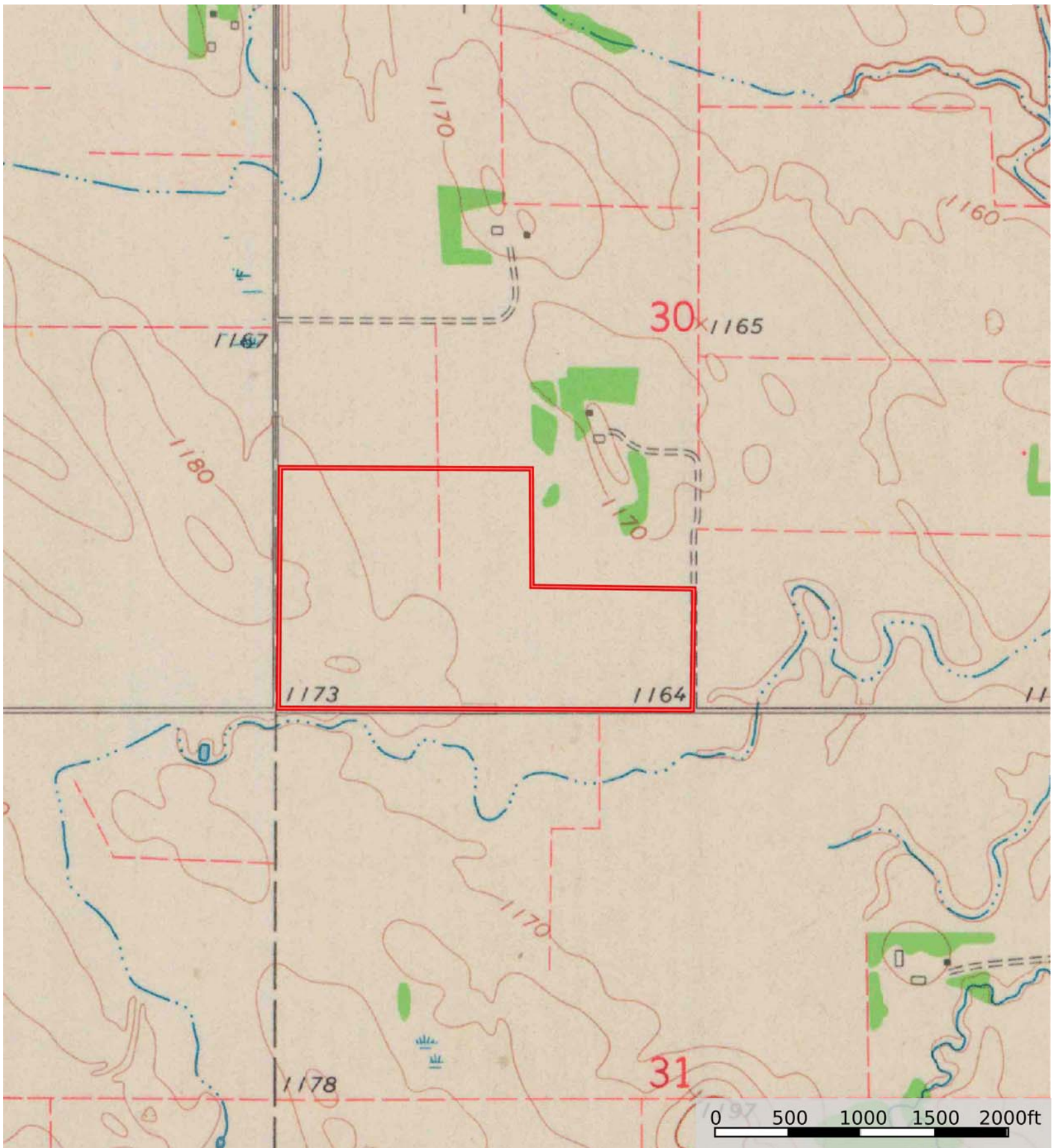
	1	2	3	4	5	6	7	8
'Wild Life'	•	•	•	•	•	•	•	•
Forestry	•	•	•	•	•	•	•	
Limited	•	•	•	•	•	•	•	
Moderate	•	•	•	•	•	•		
Intense	•	•	•	•	•			
Limited	•	•	•	•				
Moderate	•	•	•					
Intense	•	•						
Very Intense	•							

Grazing Cultivation

(c) climatic limitations (e) susceptibility to erosion
(s) soil limitations within the rooting zone (w) excess of water

L-2300119

Lac qui Parle County, Minnesota, 86 AC +/-



 Boundary