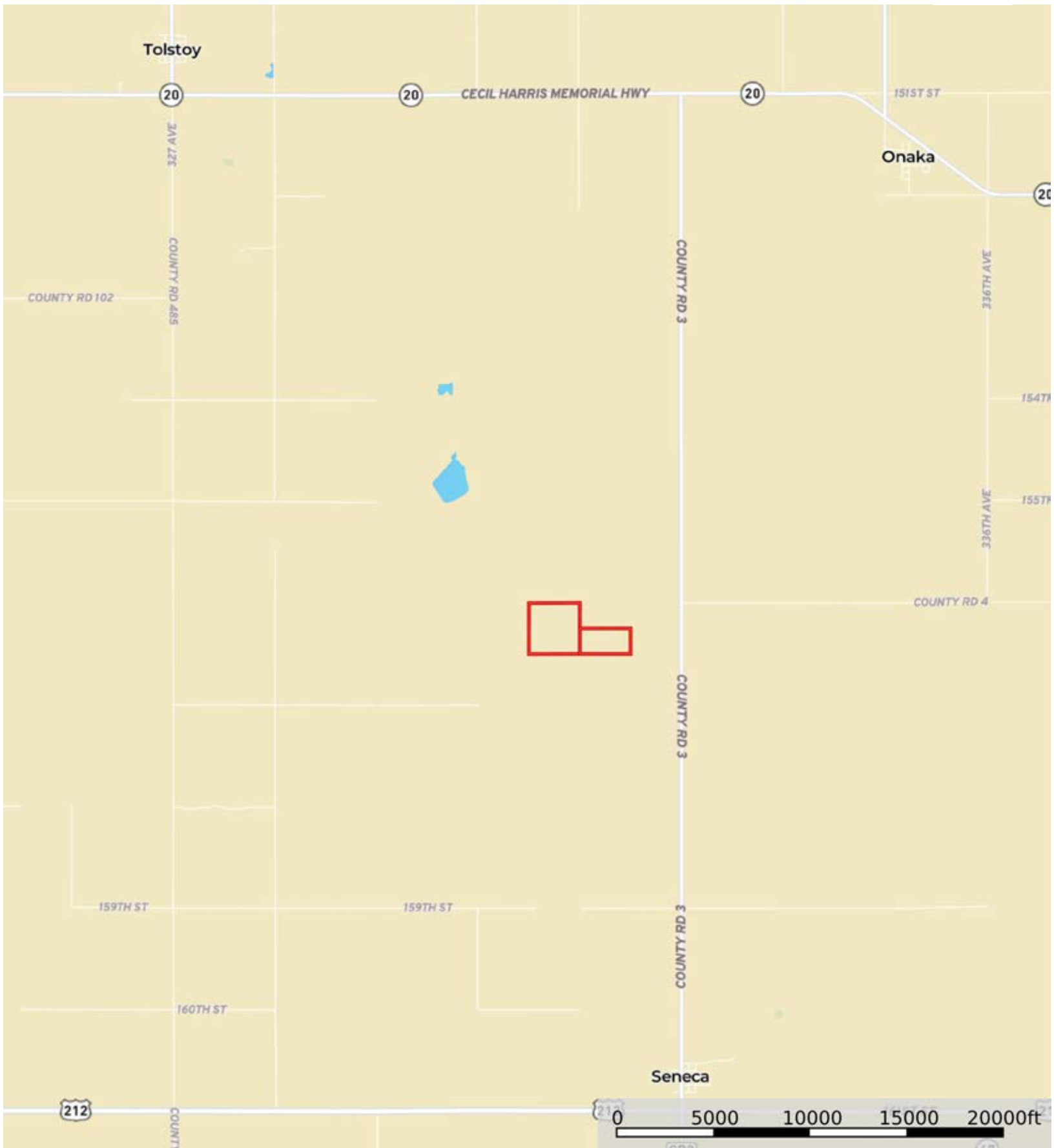



L-2300130

Faulk County, South Dakota, 240 AC +/-



 Boundary

L-2300130

Faulk County, South Dakota, 240 AC +/-



TRACT 1

mapbox

0 200 400 600 800ft

Boundary



The information contained herein was obtained from sources deemed to be reliable. MapRight Services makes no warranties or guarantees as to the completeness or accuracy thereof.



Boundary

Boundary 160.21 ac

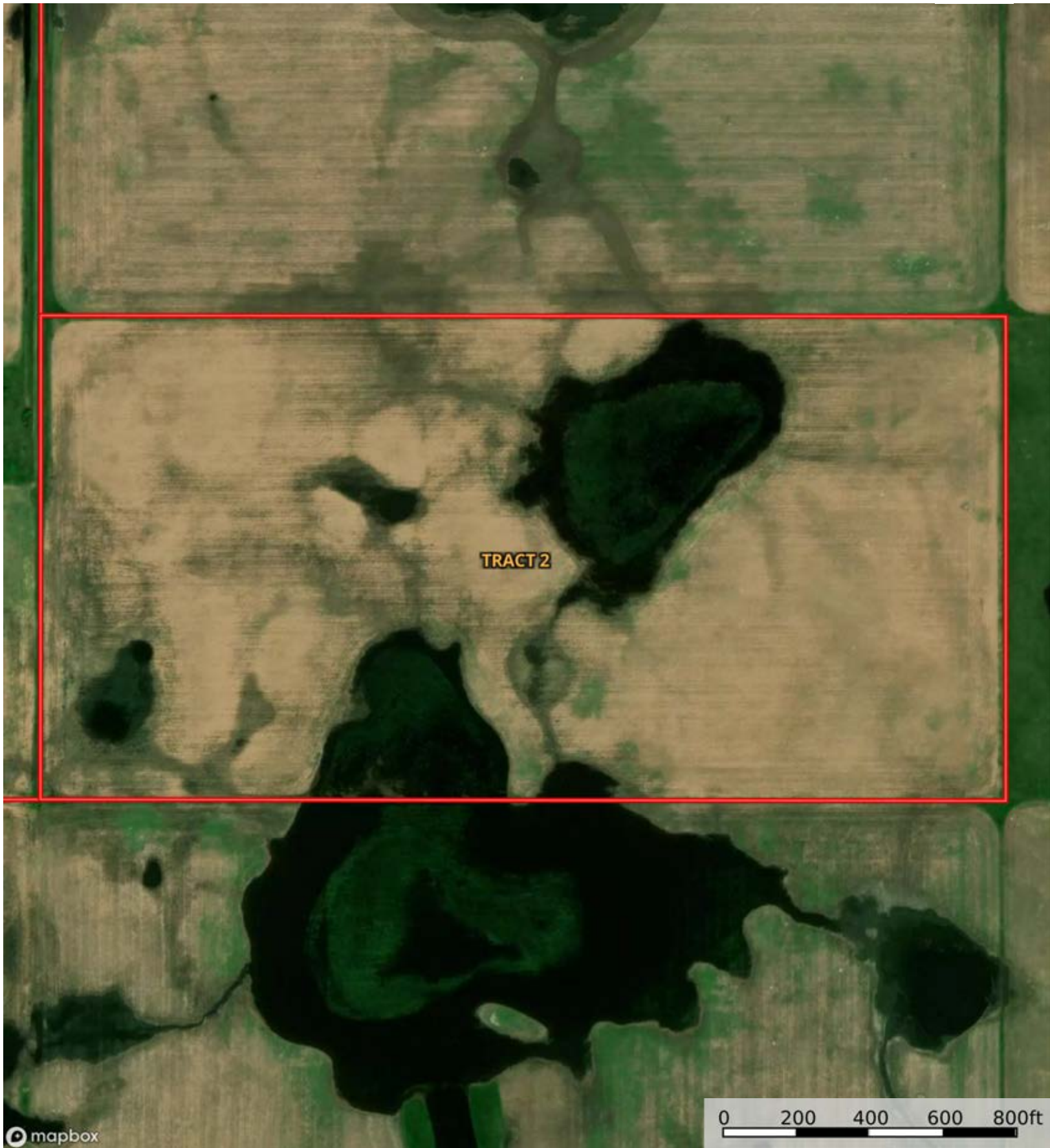
SOIL CODE	SOIL DESCRIPTION	ACRES	%	CPI	NCCPI	CAP
C211B	Williams-Bowbells-Zahl loams, 0 to 6 percent slopes	82.69	51.61	81	51	2e
C210A	Williams-Bowbells loams, 0 to 3 percent slopes	47.47	29.63	87	52	2c
C149B	Williams-Bowbells-Tonka complex, 0 to 6 percent slopes	19.25	12.02	79	48	2e
C030A	Rimlap silt loam, 0 to 1 percent slopes	5.37	3.35	52	25	4w
C201A	Bowbells loam, 0 to 3 percent slopes	4.4	2.75	96	52	2c
C020A	Heil silt loam, 0 to 1 percent slopes	0.76	0.47	21	15	6s
C002A	Tonka silt loam, 0 to 1 percent slopes	0.27	0.17	45	30	4w
TOTALS		160.21(*)	100%	81.63	49.89	2.09

(\*) Total acres may differ in the second decimal compared to the sum of each acreage soil. This is due to a round error because we only show the acres of each soil with two decimal.



L-2300130

Faulk County, South Dakota, 240 AC +/-



 Boundary

L-2300130

Faulk County, South Dakota, 240 AC +/-



Boundary

|  Boundary 79.97 ac

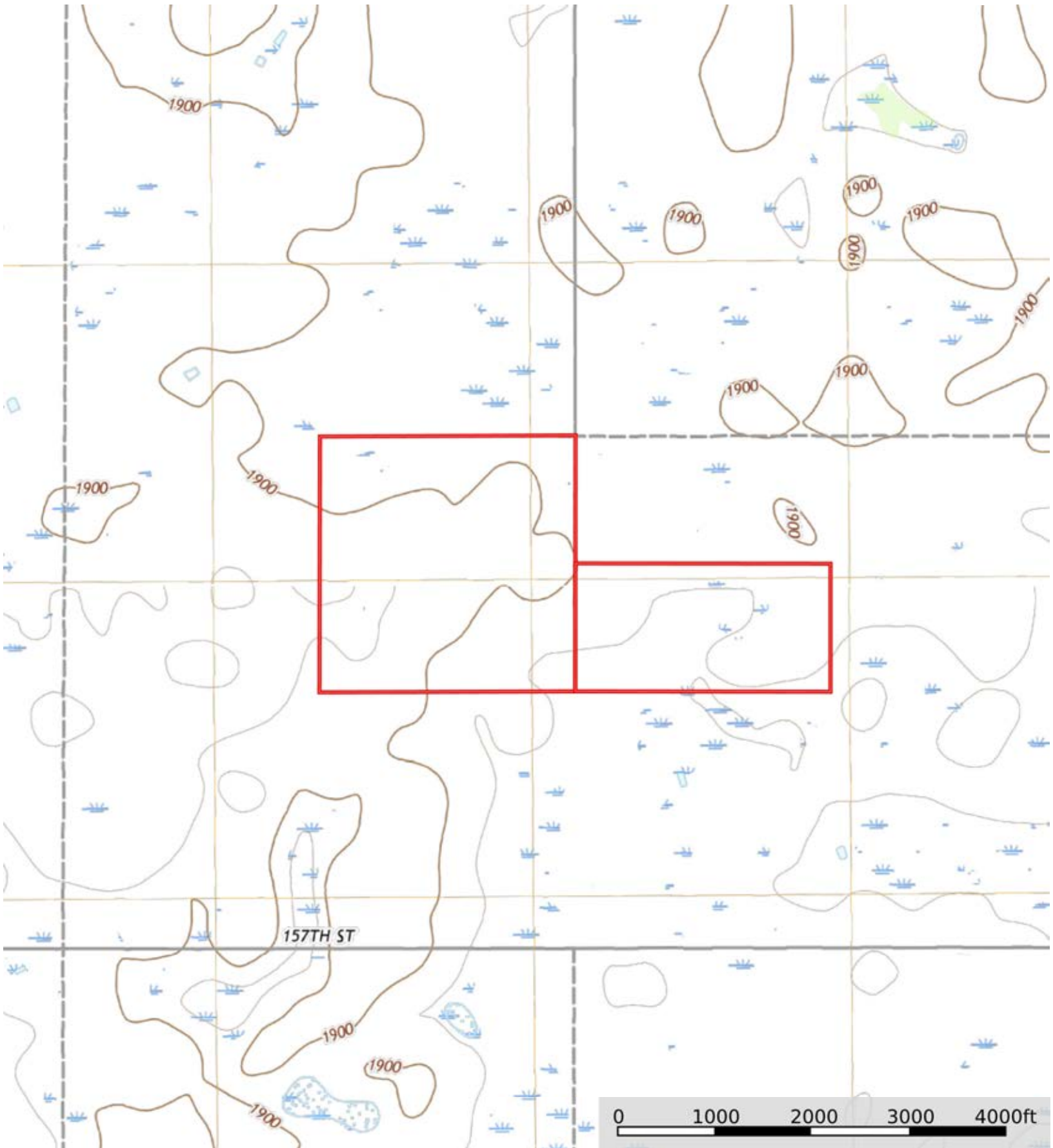
SOIL CODE	SOIL DESCRIPTION	ACRES	%	CPI	NCCPI	CAP
C149B	Williams-Bowbells-Tonka complex, 0 to 6 percent slopes	31.71	39.65	79	48	2e
C210B	Williams-Bowbells loams, 3 to 6 percent slopes	21.03	26.3	84	52	2e
C211B	Williams-Bowbells-Zahl loams, 0 to 6 percent slopes	12.66	15.83	81	51	2e
C030A	Rimlap silt loam, 0 to 1 percent slopes	7.77	9.72	52	25	4w
C210A	Williams-Bowbells loams, 0 to 3 percent slopes	4.88	6.1	87	52	2c
C002A	Tonka silt loam, 0 to 1 percent slopes	1.92	2.4	45	30	4w
TOTALS		79.97(*)	100%	77.68	47.1	2.24


(\*) Total acres may differ in the second decimal compared to the sum of each acreage soil. This is due to a round error because we only show the acres of each soil with two decimal.



L-2300130

Faulk County, South Dakota, 240 AC +/-



 Boundary