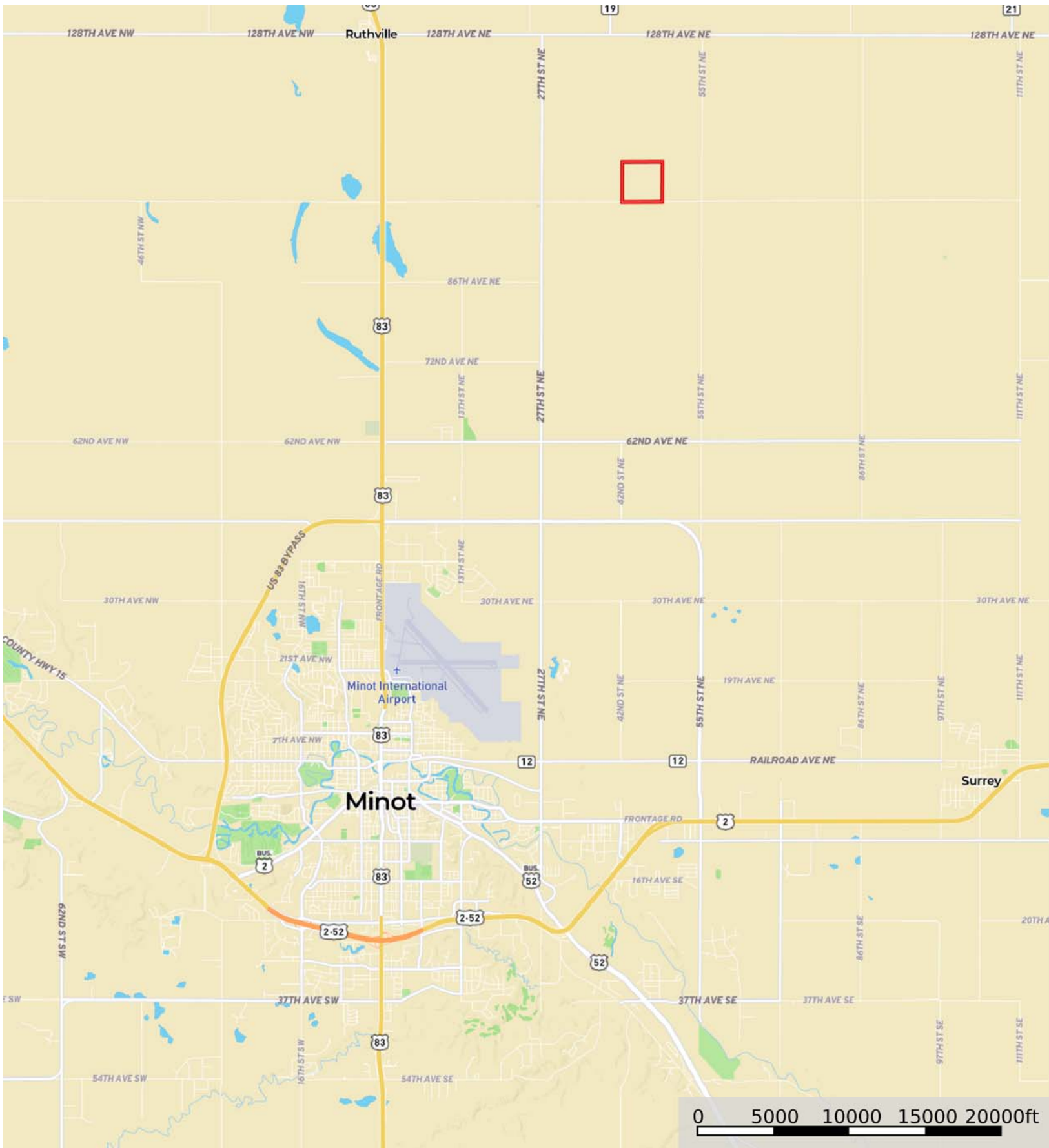


# Sheryl Solberg

Ward County, North Dakota, 160 AC +/-




 Boundary

# Sheryl Solberg

Ward County, North Dakota, 160 AC +/-

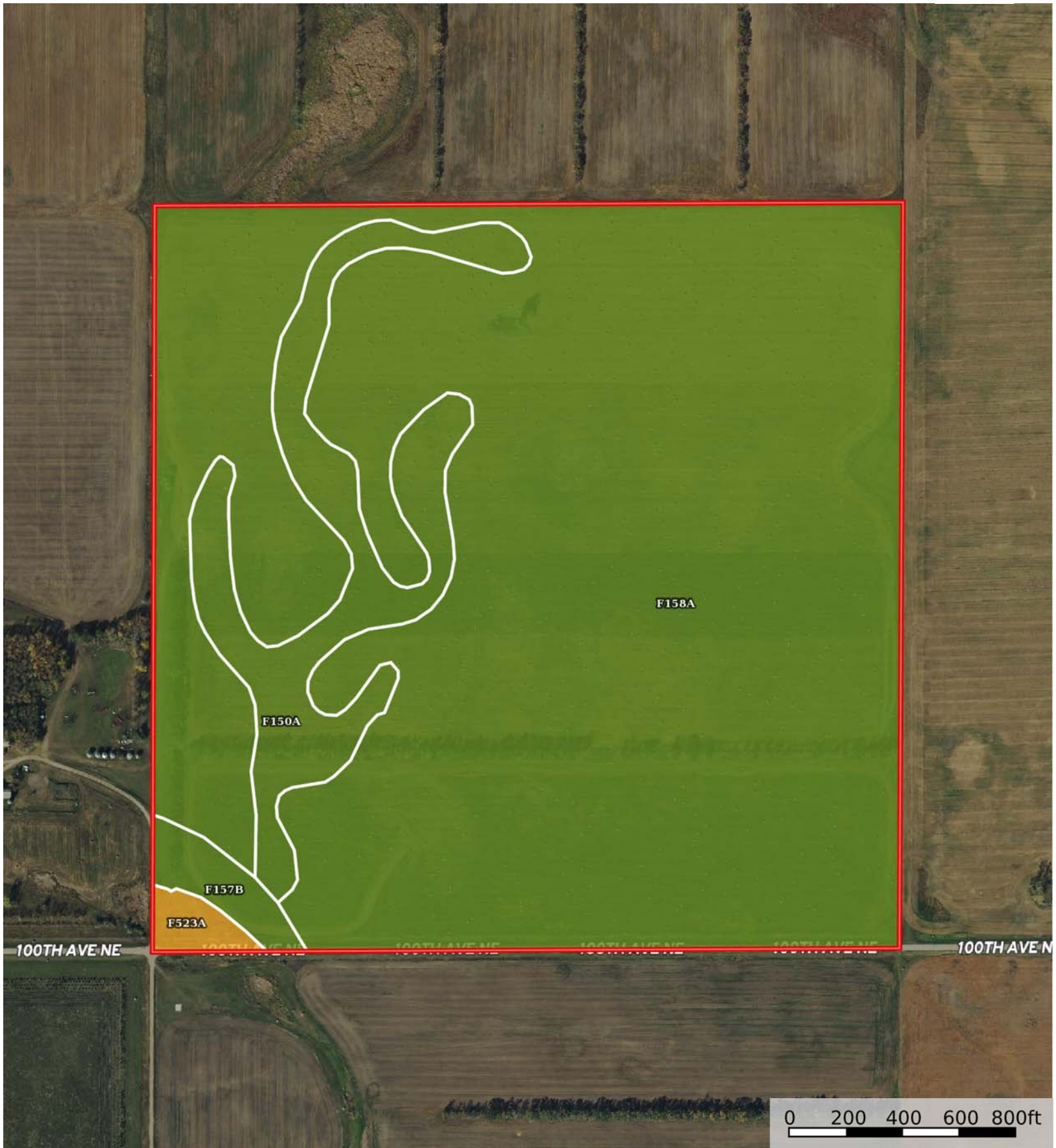



 Boundary



# Sheryl Solberg

Ward County, North Dakota, 160 AC +/-



 Boundary

|  Boundary 159.72 ac

SOIL CODE	SOIL DESCRIPTION	ACRES	%	CPI	NCCPI	CAP
F158A	Hamlet-Souris-Tonka complex, 0 to 3 percent slopes	139.24	87.18	80	48	2c
F150A	Hamlet-Tonka-Wyard complex, 0 to 3 percent slopes	16.64	10.42	74	46	2c
F157B	Barnes loam, 3 to 6 percent slopes	2.44	1.53	81	55	2e
F523A	Low-Fluvaquents, channeled complex, 0 to 2 percent slopes, frequently flooded	1.4	0.88	21	12	6w
TOTALS		159.72(*)	100%	78.87	47.58	2.04









(\*) Total acres may differ in the second decimal compared to the sum of each acreage soil. This is due to a round error because we only show the acres of each soil with two decimal.

### Capability Legend

Increased Limitations and Hazards

Decreased Adaptability and Freedom of Choice Users

Land, Capability

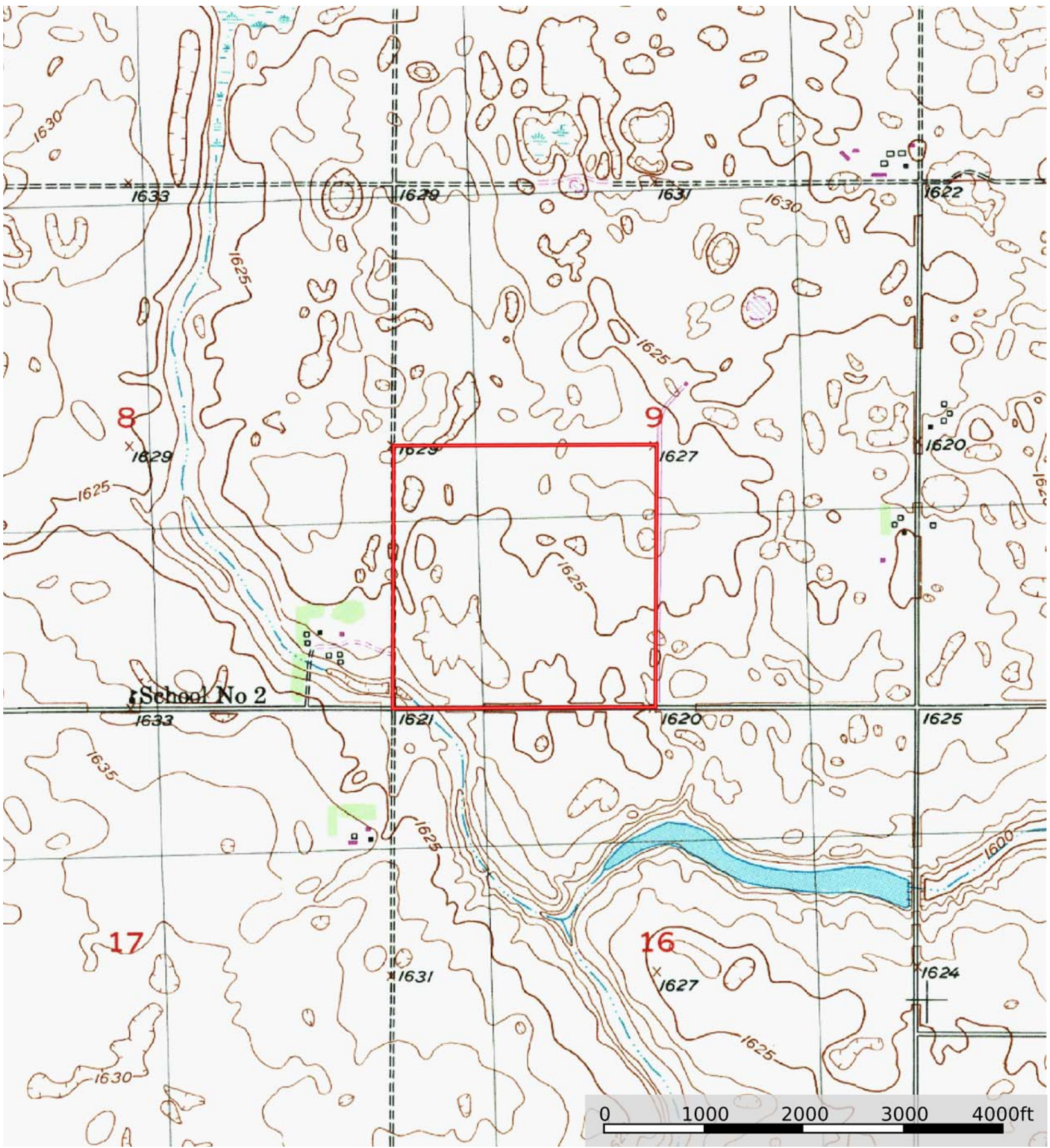
								
	1	2	3	4	5	6	7	8
'Wild Life'	•	•	•	•	•	•	•	•
Forestry	•	•	•	•	•	•	•	
Limited	•	•	•	•	•	•	•	
Moderate	•	•	•	•	•	•		
Intense	•	•	•	•	•			
Limited	•	•	•	•				
Moderate	•	•	•					
Intense	•	•						
Very Intense	•							

### Grazing Cultivation

(c) climatic limitations (e) susceptibility to erosion

(s) soil limitations within the rooting zone (w) excess of water





 Boundary