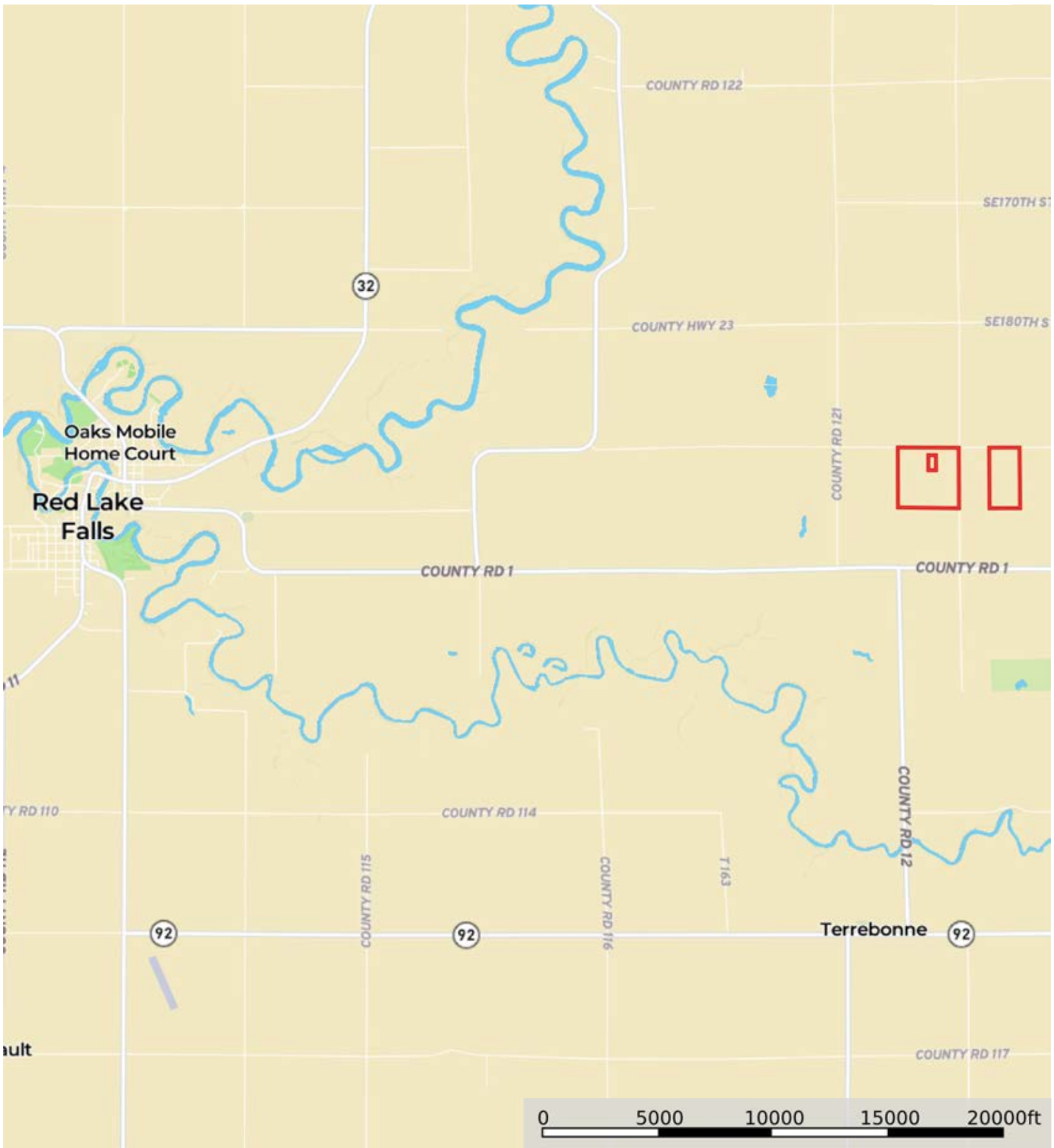


L-2300141

Red Lake County, Minnesota, 235 AC +/-



 Boundary



The information contained herein was obtained from sources deemed to be reliable. MapRight Services makes no warranties or guarantees as to the completeness or accuracy thereof.

L-2300141

Red Lake County, Minnesota, 235 AC +/-



 Boundary

L-2300141

Red Lake County, Minnesota, 235 AC +/-



Boundary

L-2300141

Red Lake County, Minnesota, 235 AC +/-



Boundary

|  Boundary 155.02 ac

SOIL CODE	SOIL DESCRIPTION	ACRES	%	CPI	NCCPI	CAP
I25A	Hamar loamy fine sand, Aspen Parkland, 0 to 1 percent slopes	40.22	25.94	52	36	4w
I47A	Poppleton fine sand, 0 to 2 percent slopes	38.03	24.53	45	28	4s
I55A	Rosewood fine sandy loam, Aspen Parkland, 0 to 1 percent slopes	23.98	15.47	54	35	3w
I70A	Strathcona fine sandy loam, 0 to 1 percent slopes	16.44	10.6	80	59	2w
I15A	Hecla loamy fine sand, 0 to 2 percent slopes	12.03	7.76	50	41	4e
I11A	Deerwood muck, 0 to 1 percent slopes	10.42	6.72	15	21	6w
I59A	Smiley loam, 0 to 1 percent slopes	8.73	5.63	95	76	2w
I56A	Rosewood-Venlo complex, 0 to 1 percent slopes	3.08	1.99	33	29	3w
I60A	Smiley mucky loam, 0 to 1 percent slopes	0.95	0.61	86	47	6w
I17A	Foldahl fine sandy loam, loamy till substratum, 0 to 3 percent slopes	0.7	0.45	65	58	2s
I38A	Kratka fine sandy loam, loamy till substratum, 0 to 1 percent slopes	0.44	0.28	77	62	2w
TOTALS		155.0 2(*)	100%	53.3	38.05	3.63









(*) Total acres may differ in the second decimal compared to the sum of each acreage soil. This is due to a round error because we only show the acres of each soil with two decimal.

Capability Legend

Increased Limitations and Hazards

Decreased Adaptability and Freedom of Choice Users

Land, Capability

								
	1	2	3	4	5	6	7	8
'Wild Life'	•	•	•	•	•	•	•	•
Forestry	•	•	•	•	•	•	•	
Limited	•	•	•	•	•	•	•	
Moderate	•	•	•	•	•	•		
Intense	•	•	•	•	•			
Limited	•	•	•	•				
Moderate	•	•	•					
Intense	•	•						
Very Intense	•							

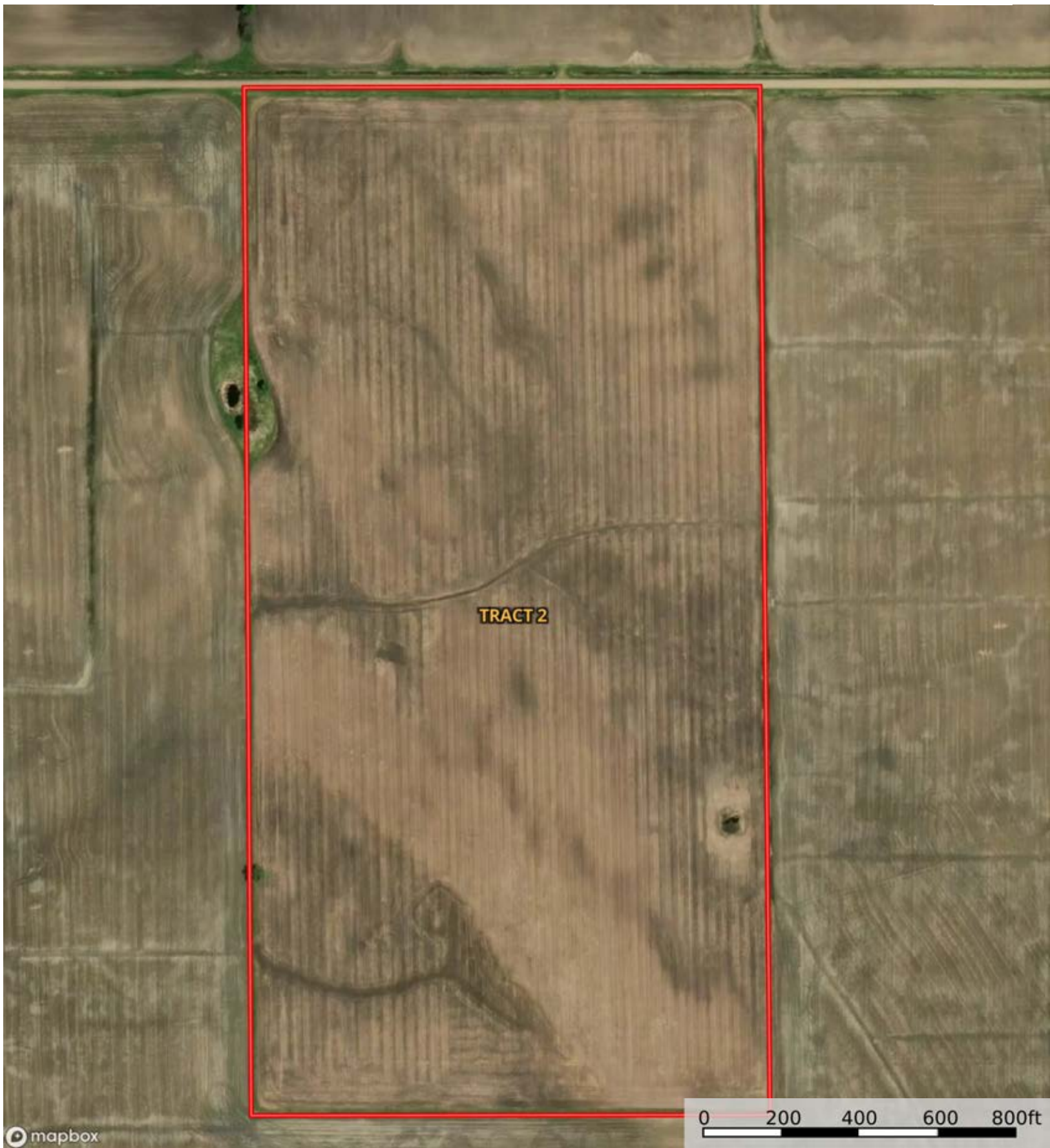
Grazing Cultivation

(c) climatic limitations (e) susceptibility to erosion

(s) soil limitations within the rooting zone (w) excess of water

L-2300141

Red Lake County, Minnesota, 235 AC +/-



mapbox

0 200 400 600 800ft

Boundary

L-2300141

Red Lake County, Minnesota, 235 AC +/-



mapbox

Boundary

|  Boundary 80.46 ac

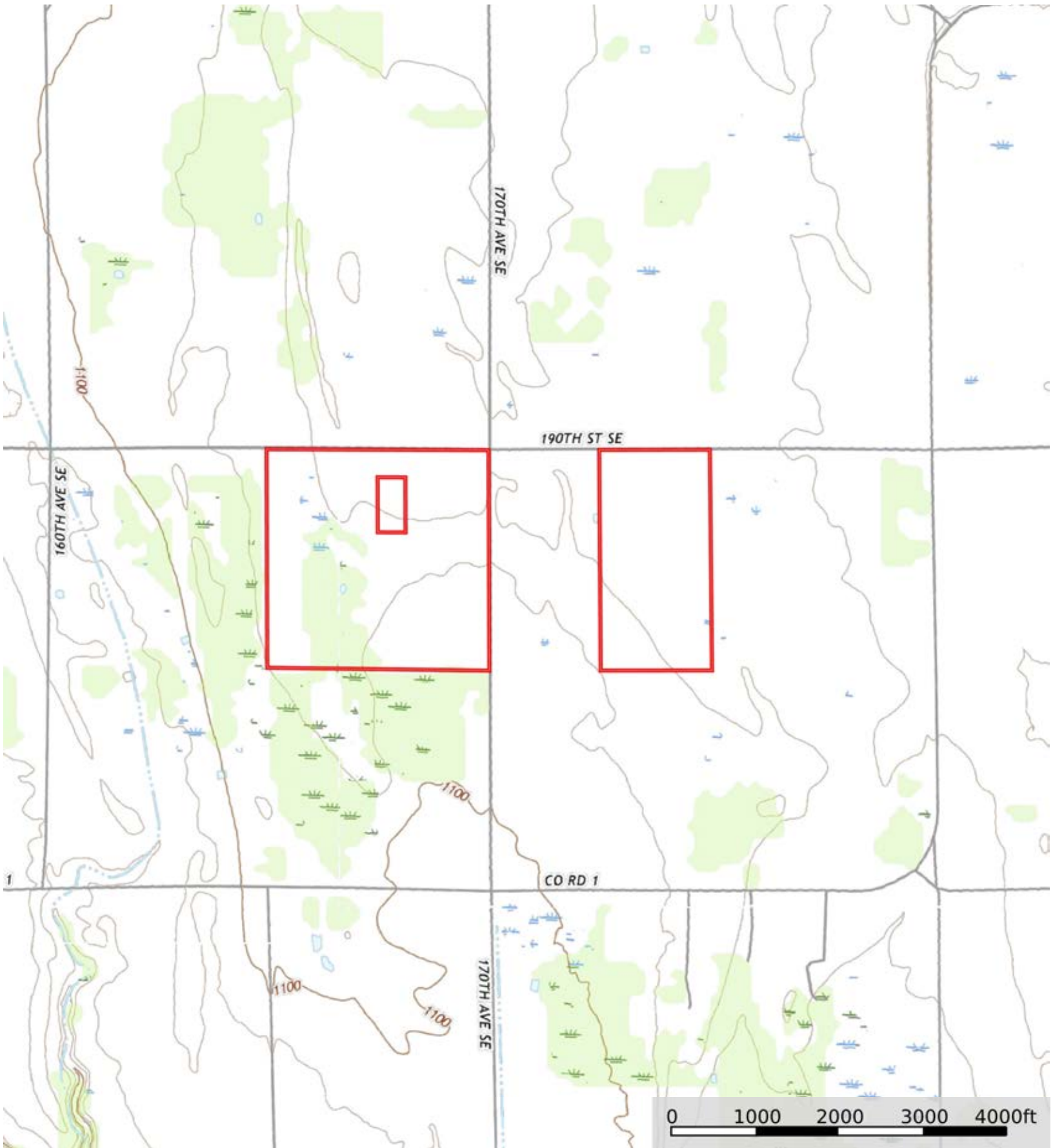
SOIL CODE	SOIL DESCRIPTION	ACRES	%	CPI	NCCPI	CAP
I15A	Hecla loamy fine sand, 0 to 2 percent slopes	25.02	31.1	50	41	4e
I70A	Strathcona fine sandy loam, 0 to 1 percent slopes	24.57	30.54	80	59	2w
I38A	Kratka fine sandy loam, loamy till substratum, 0 to 1 percent slopes	13.92	17.3	77	62	2w
I37A	Kratka and Strathcona soils, 0 to 1 percent slopes	8.34	10.37	15	38	6w
I50A	Reiner fine sandy loam, 0 to 2 percent slopes	7.81	9.71	89	69	2c
I59A	Smiley loam, 0 to 1 percent slopes	0.8	0.99	95	76	2w
TOTALS		80.46(*)	100%	64.44	52.88	3.04


(*) Total acres may differ in the second decimal compared to the sum of each acreage soil. This is due to a round error because we only show the acres of each soil with two decimal.



L-2300141

Red Lake County, Minnesota, 235 AC +/-



 Boundary