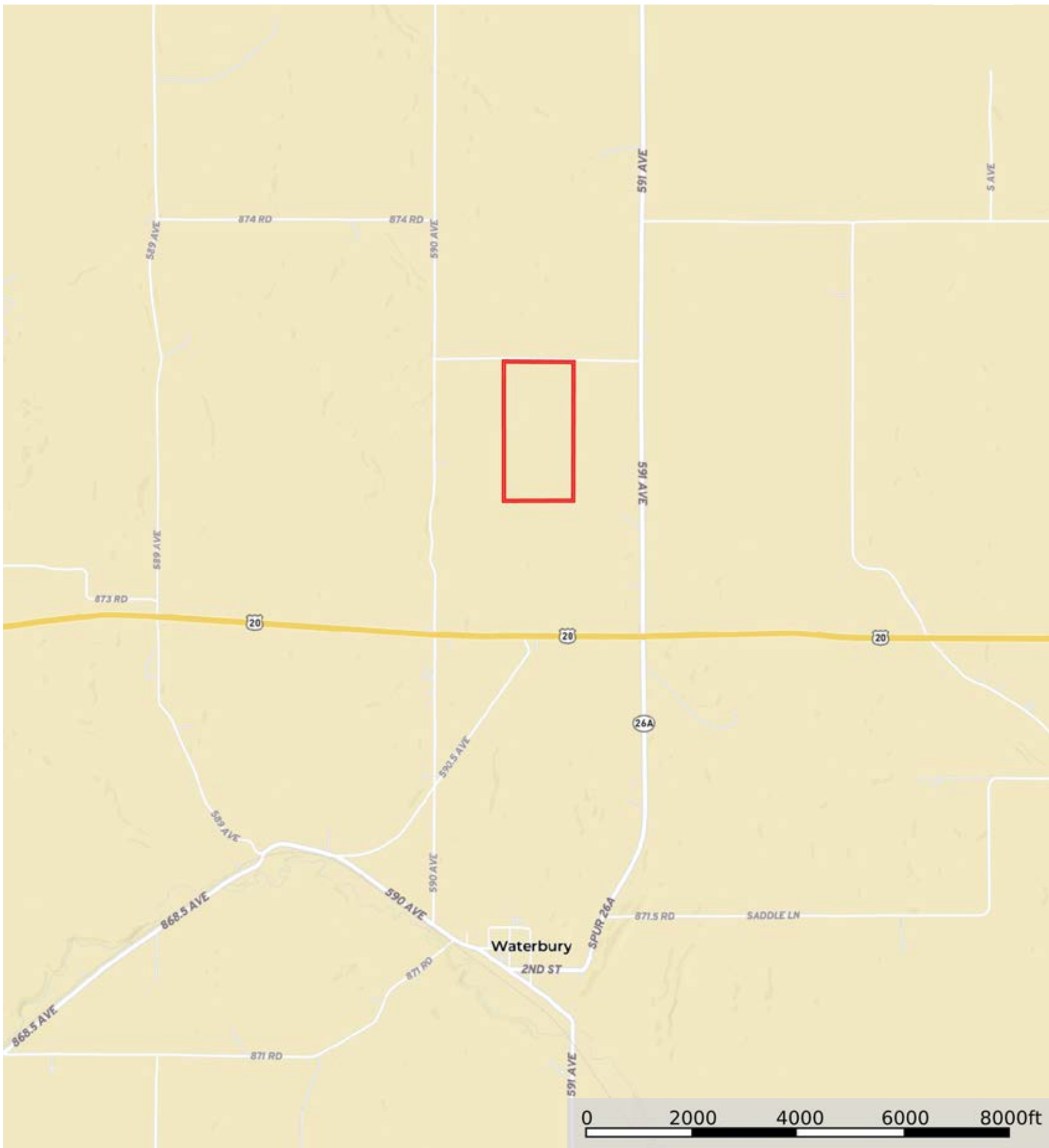



L-2300157

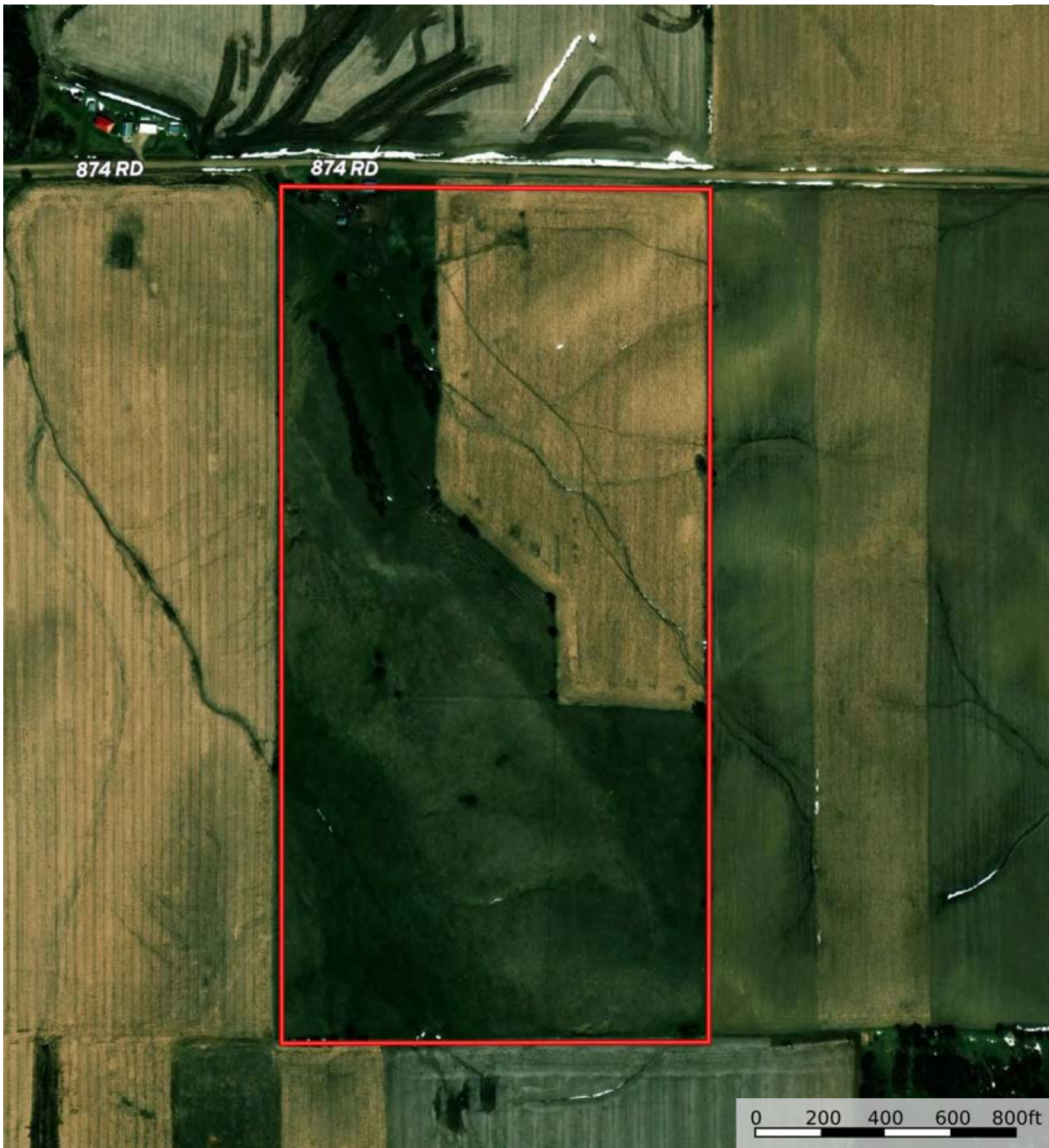
Dixon County, Nebraska, 80 AC +/-




 Boundary

L-2300157

Dixon County, Nebraska, 80 AC +/-



 Boundary



The information contained herein was obtained from sources deemed to be reliable. MapRight Services makes no warranties or guarantees as to the completeness or accuracy thereof.

L-2300157

Dixon County, Nebraska, 80 AC +/-



 Boundary

|  Boundary 79.72 ac

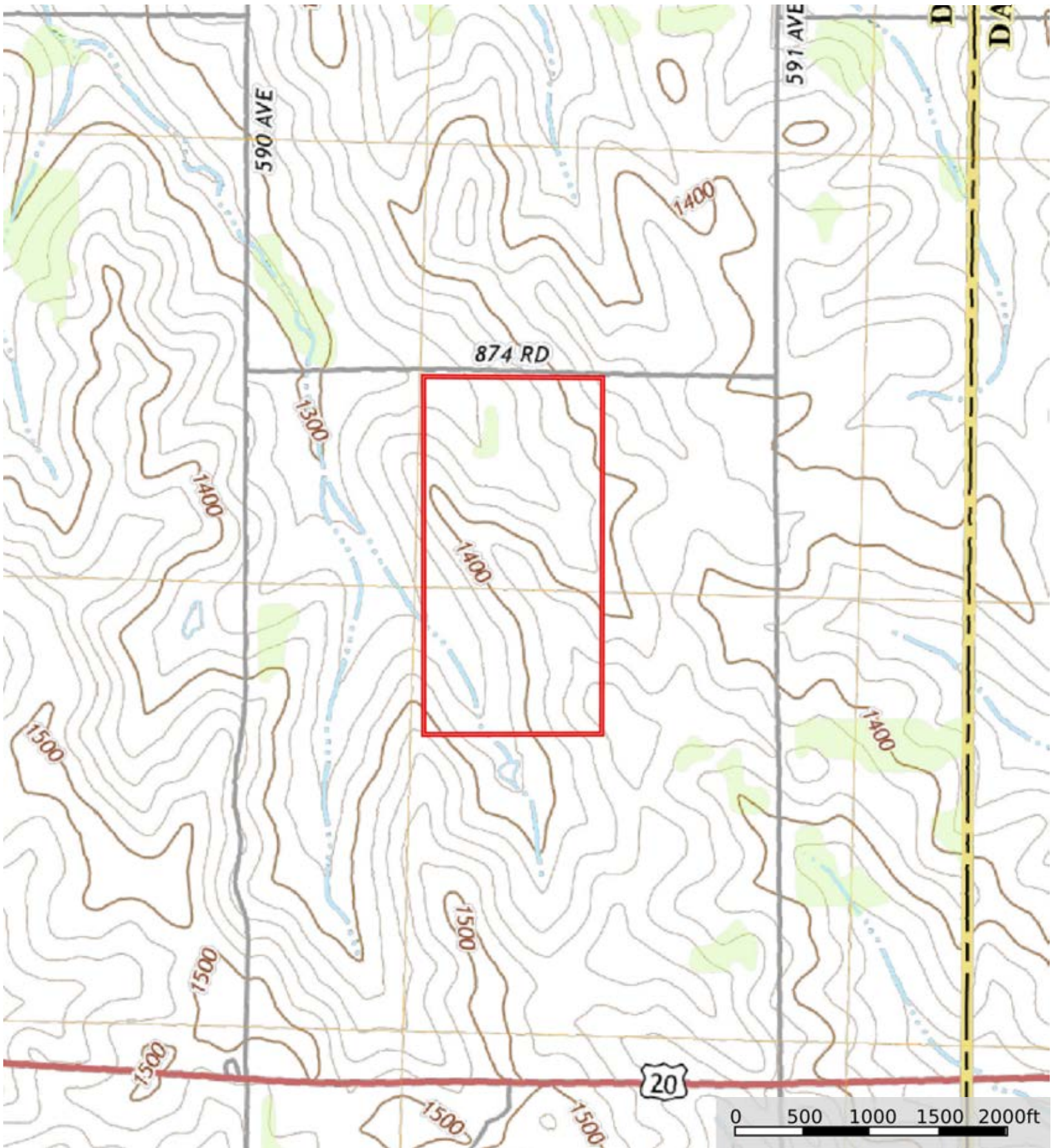
SOIL CODE	SOIL DESCRIPTION	ACRES	%	CPI	NCCPI	CAP
6603	Alcester silty clay loam, 2 to 6 percent slopes	24.66	30.93	91	76	2e
6767	Nora silty clay loam, 6 to 11 percent slopes	21.17	26.56	0	76	3e
6749	Nora silt loam, 11 to 17 percent slopes	14.01	17.57	0	74	4e
6860	Crofton silt loam, 8 to 17 percent slopes, eroded	11.55	14.49	0	58	4e
6681	Crofton silt loam, 17 to 30 percent slopes, eroded	8.33	10.45	0	38	6e
TOTALS		79.72(*)	100%	28.15	69.07	3.32


(*) Total acres may differ in the second decimal compared to the sum of each acreage soil. This is due to a round error because we only show the acres of each soil with two decimal.



L-2300157

Dixon County, Nebraska, 80 AC +/-



 Boundary



The information contained herein was obtained from sources deemed to be reliable. MapRight Services makes no warranties or guarantees as to the completeness or accuracy thereof.