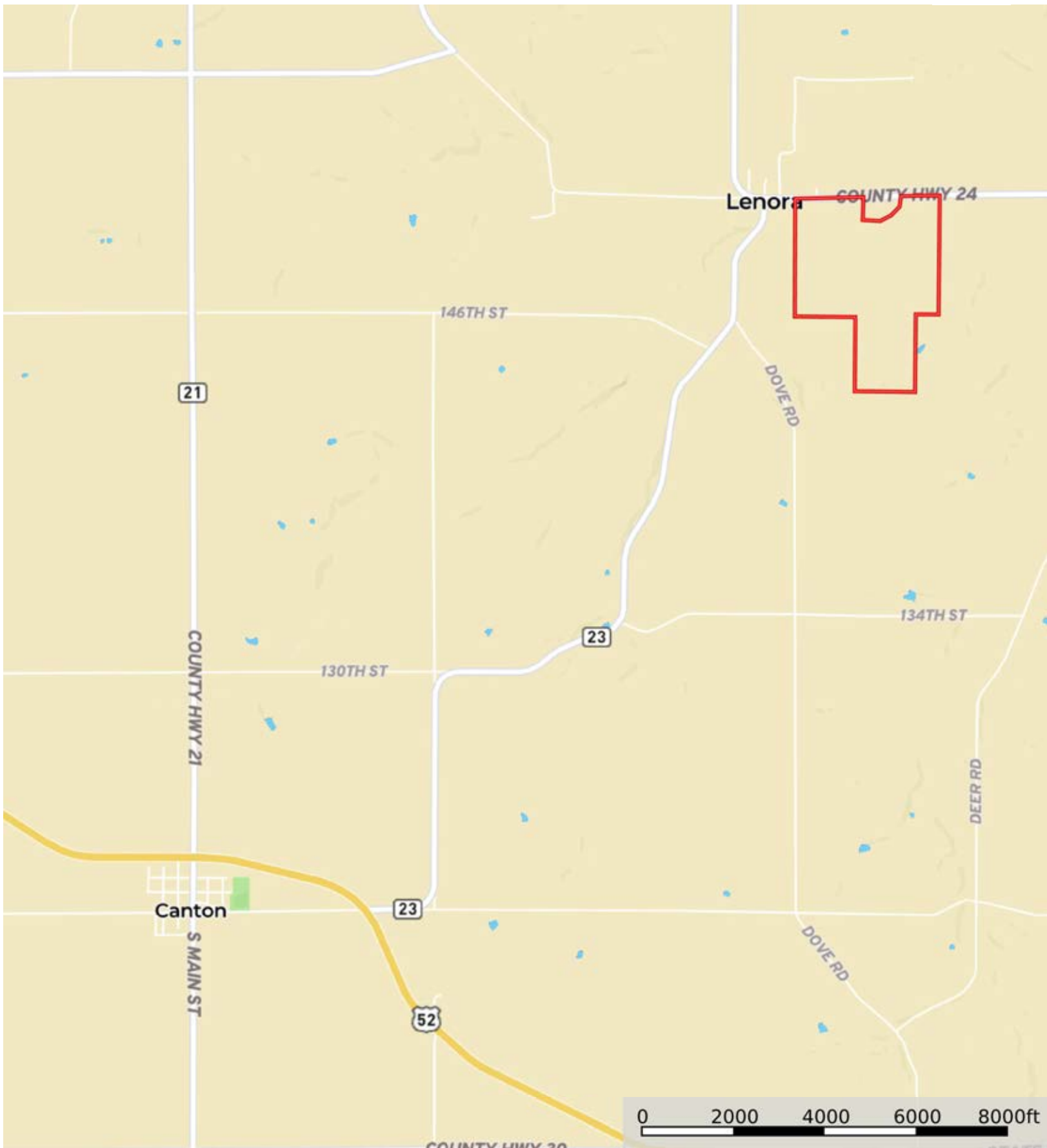



L-2300161

Fillmore County, Minnesota, 234.81 AC +/-



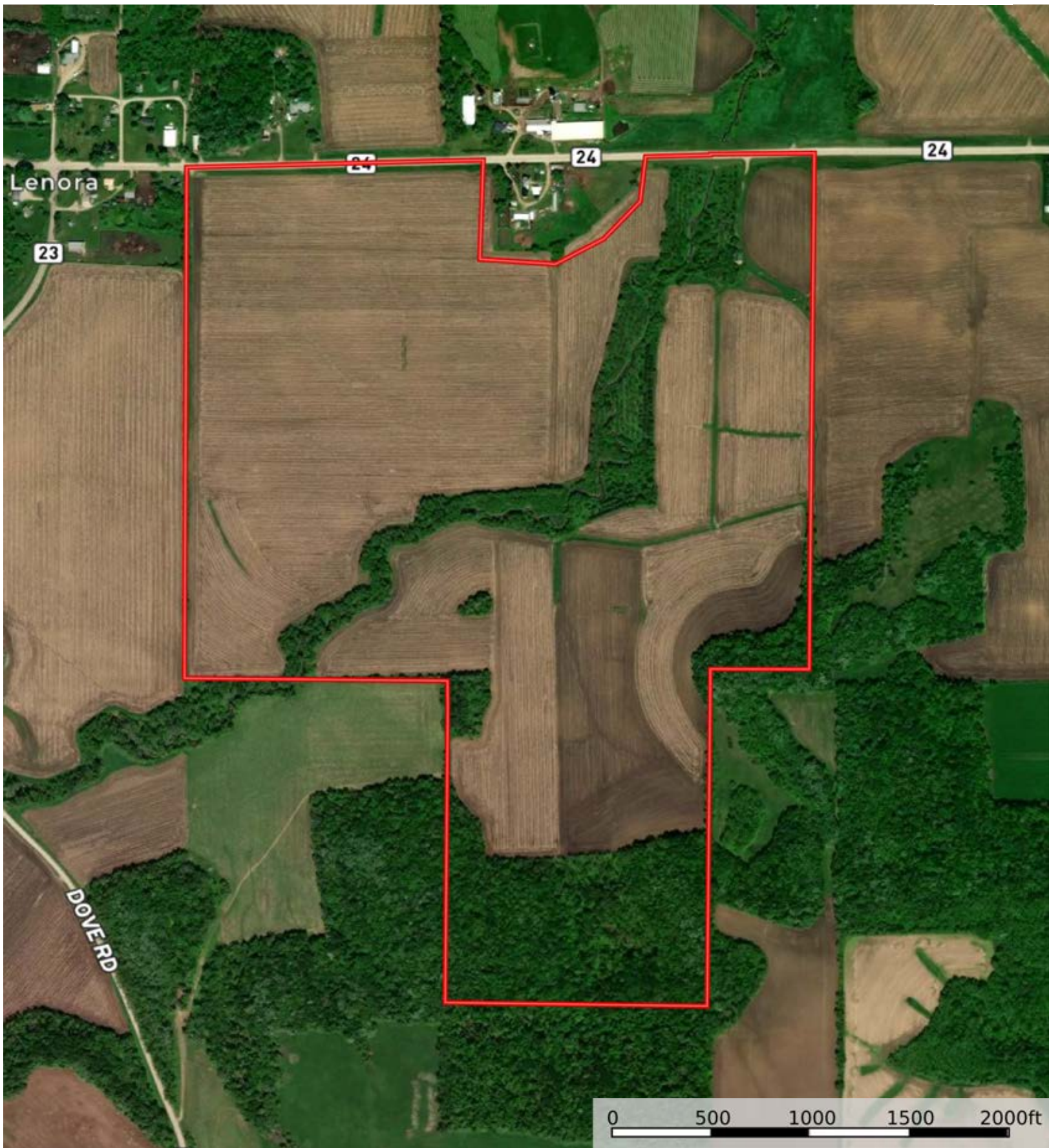
 Boundary




The information contained herein was obtained from sources deemed to be reliable. MapRight Services makes no warranties or guarantees as to the completeness or accuracy thereof.


L-2300161

Fillmore County, Minnesota, 234.81 AC +/-



 Boundary



 Boundary

|  Boundary 231.64 ac

SOIL CODE	SOIL DESCRIPTION	ACRES	%	CPI	NCCPI	CAP
Tb	Tama-Downs complex, driftless, 2 to 6 percent slopes	94.49	40.79	93	93	2e
Te	Tama-Downs complex, driftless, 6 to 12 percent slopes, moderately eroded	43.28	18.68	86	87	3e
Ab	Alluvial land, medium textured, well drained	34.33	14.82	74	81	2w
Cb	Chaseburg and Judson silt loams, 2 to 6 percent slopes	16.67	7.2	94	92	2e
Dx	Dubuque and Whalan silt loams, 18 to 45 percent slopes	10.29	4.44	17	15	7e
Fd	Fayette silt loam, 6 to 12 percent slopes, moderately eroded	8.96	3.87	72	86	3e
Ff	Fayette silt loam, 12 to 20 percent slopes, moderately eroded	6.83	2.95	61	80	4e
Fb	Fayette silt loam, 2 to 6 percent slopes	6.63	2.86	85	92	2e
Lc	Lindstrom silt loam, 11 to 17 percent slopes, moderately eroded	2.48	1.07	73	82	4e
Dv	Dubuque and Whalan silt loams, 12 to 17 percent slopes, moderately eroded	1.96	0.85	32	50	6e
N510E	Sylvester-Downs complex, 20 to 45 percent slopes	1.57	0.68	6	18	7e
Ce	Chelsea and Boone loamy fine sands, 12 to 17 percent slopes	1.55	0.67	28	31	7s
Du	Dubuque and Whalan silt loams, 7 to 11 percent slopes, moderately eroded	1.46	0.63	42	54	4e
Ld	Lindstrom fine sandy loam, 18 to 45 percent slopes	1.07	0.46	23	18	7e
Sb	Schapville silty clay loam, 7 to 11 percent slopes, moderately eroded	0.07	0.03	46	62	3e
TOTALS		231.64(*)	100%	81.17	83.87	2.67









(\*) Total acres may differ in the second decimal compared to the sum of each acreage soil. This is due to a round error because we only show the acres of each soil with two decimal.

## Capability Legend

Increased Limitations and Hazards

Decreased Adaptability and Freedom of Choice Users

Land, Capability

								
	1	2	3	4	5	6	7	8
'Wild Life'	•	•	•	•	•	•	•	•
Forestry	•	•	•	•	•	•	•	
Limited	•	•	•	•	•	•	•	
Moderate	•	•	•	•	•	•		
Intense	•	•	•	•	•			
Limited	•	•	•	•				
Moderate	•	•	•					
Intense	•	•						
Very Intense	•							

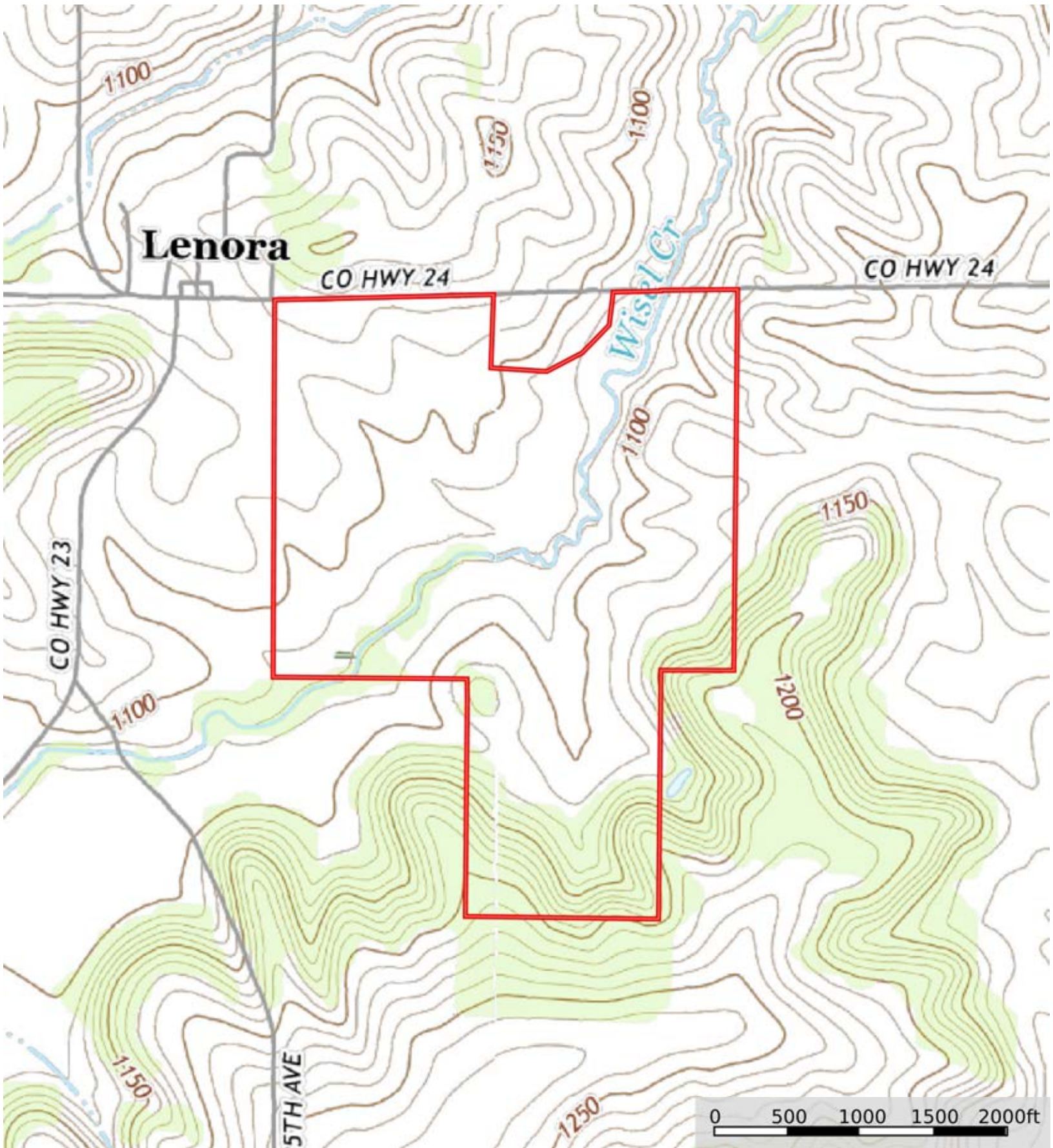
### Grazing Cultivation


(c) climatic limitations (e) susceptibility to erosion

(s) soil limitations within the rooting zone (w) excess of water

L-2300161

Fillmore County, Minnesota, 234.81 AC +/-



 Boundary