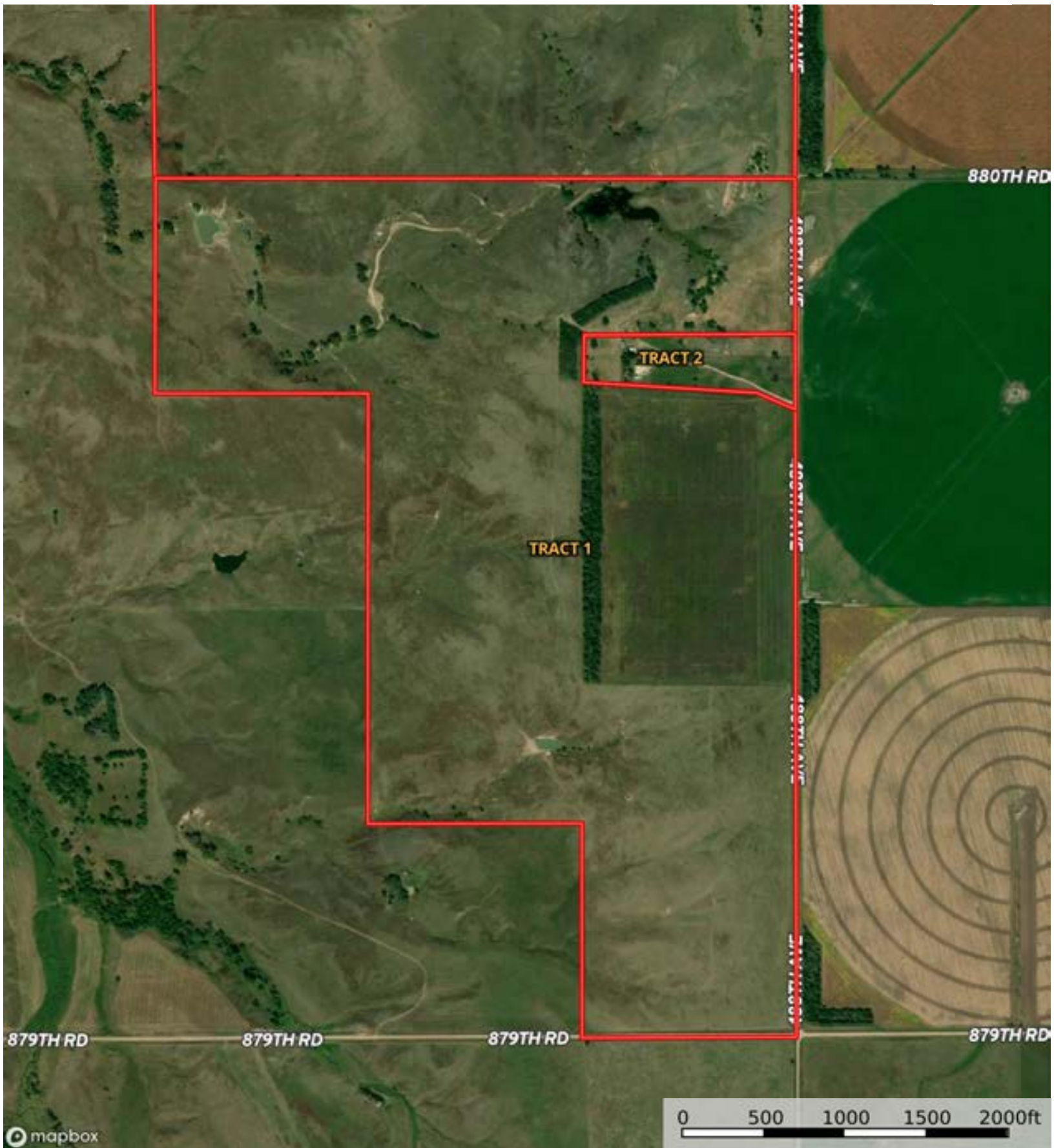

 Boundary

L-2300166

Holt County, Nebraska, 1040 AC +/-



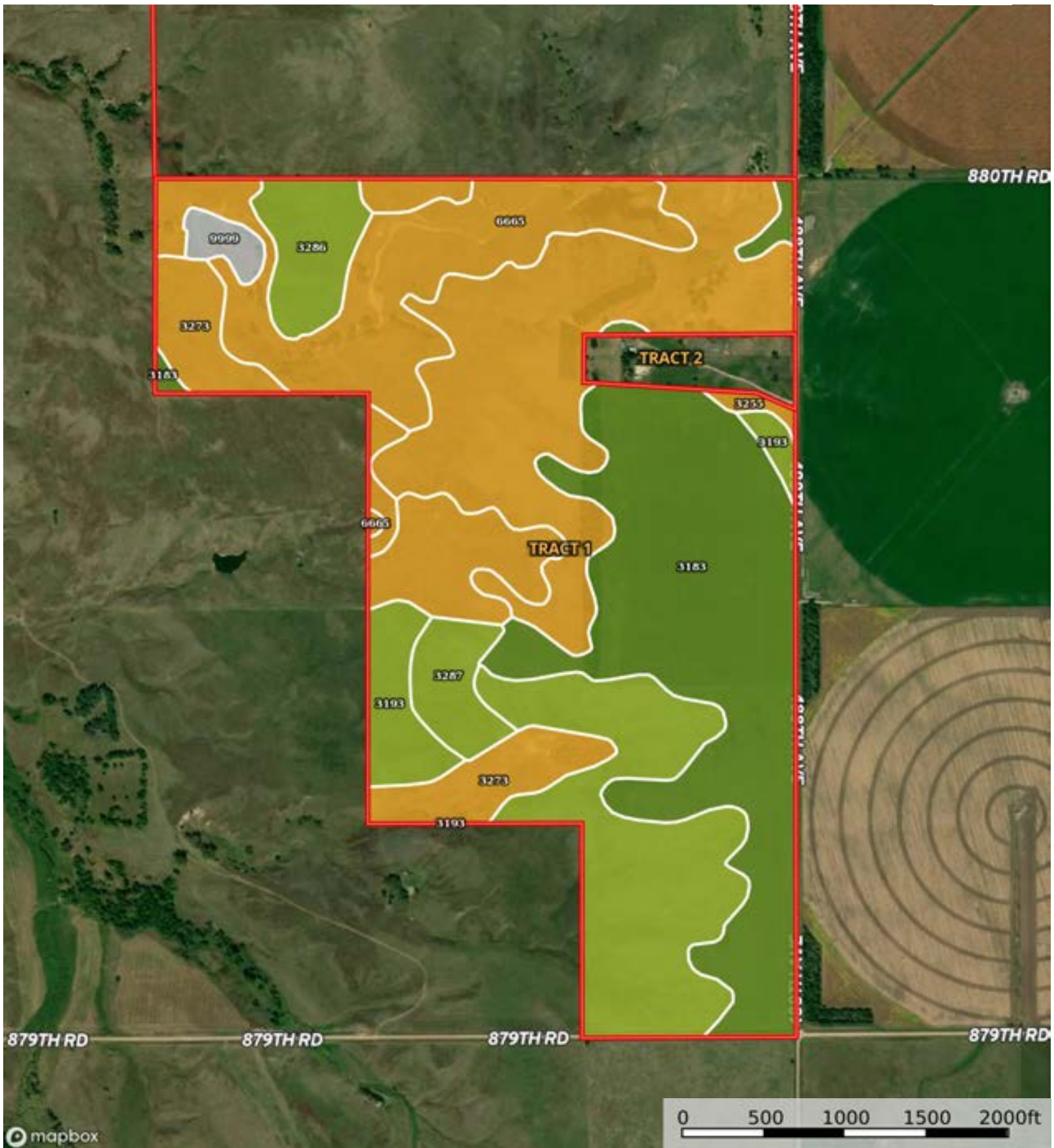
 Boundary



The information contained herein was obtained from sources deemed to be reliable. MapRight Services makes no warranties or guarantees as to the completeness or accuracy thereof.

L-2300166

Holt County, Nebraska, 1040 AC +/-



Boundary



The information contained herein was obtained from sources deemed to be reliable. MapRight Services makes no warranties or guarantees as to the completeness or accuracy thereof.

Boundary 309.37 ac

SOIL CODE	SOIL DESCRIPTION	ACRES	%	CPI	NCCPI	CAP
3183	Jansen loam, 0 to 2 percent slopes	82.79	26.76	54	34	2s
3255	Meadin sandy loam, 2 to 30 percent slopes	68.8	22.24	0	24	6s
6665	Brunswick-Pivot complex, 11 to 30 percent slopes	56.97	18.41	0	24	6e
3193	Jansen-Meadin loams, 2 to 6 percent slopes	56.3	18.2	0	39	3e
3273	O'Neill-Meadin fine sandy loams, 6 to 11 percent slopes	21.56	6.97	0	30	6e
3286	Paka loam, 2 to 6 percent slopes	11.46	3.7	0	54	3e
3287	Paka loam, 6 to 11 percent slopes, eroded	8.32	2.69	0	48	3e
9999	Water	3.17	1.02	0	-	-
TOTALS		309.37(*)	100%	14.45	31.33	4.17


(*) Total acres may differ in the second decimal compared to the sum of each acreage soil. This is due to a round error because we only show the acres of each soil with two decimal.



L-2300166

Holt County, Nebraska, 1040 AC +/-



 Boundary



 Boundary

|  Boundary 10.21 ac

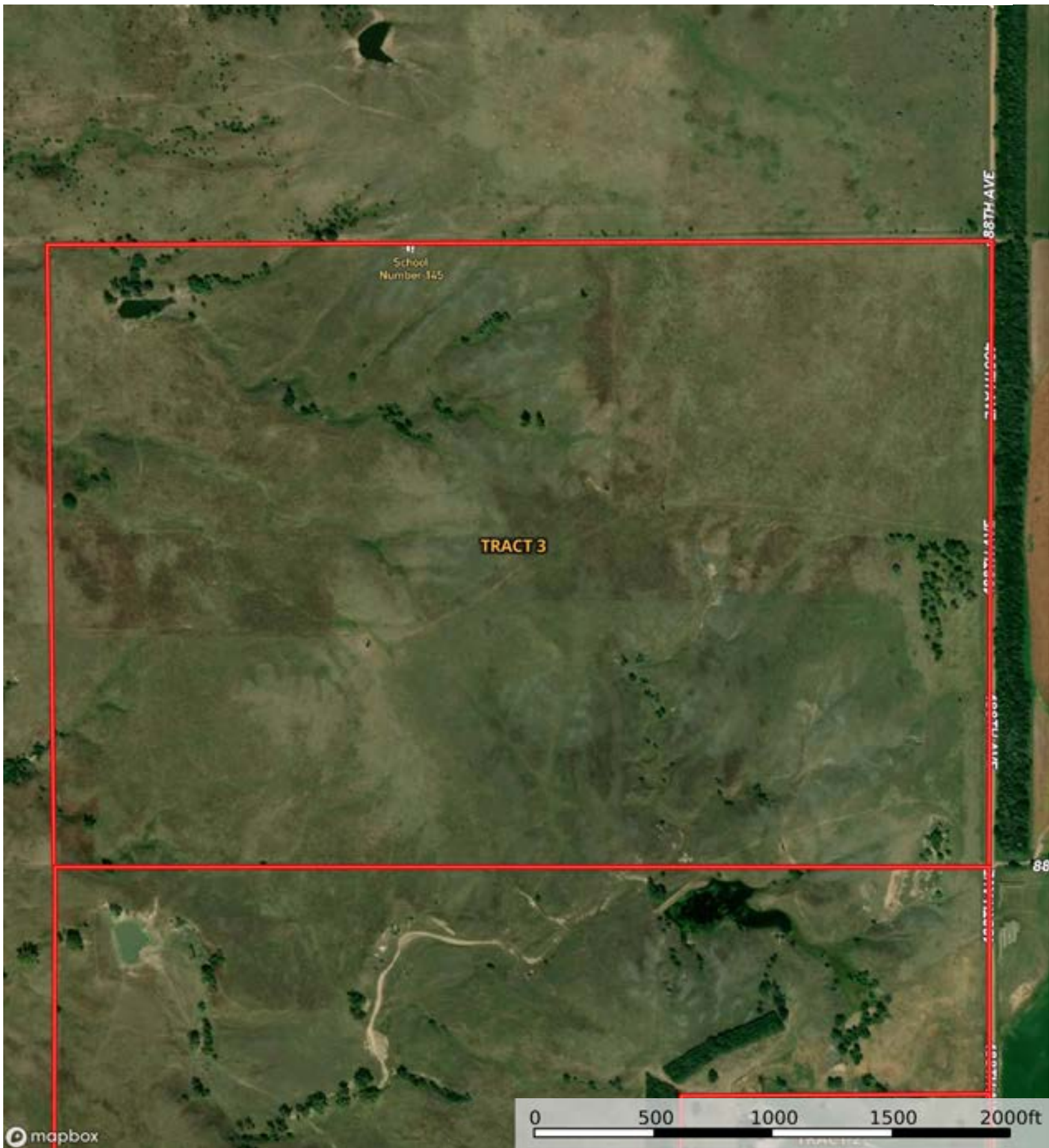
SOIL CODE	SOIL DESCRIPTION	ACRES	%	CPI	NCCPI	CAP
3255	Meadin sandy loam, 2 to 30 percent slopes	7.02	68.76	0	24	6s
3183	Jansen loam, 0 to 2 percent slopes	3.19	31.24	54	34	2s
TOTALS		10.21(*)	100%	16.87	27.12	4.75

(*) Total acres may differ in the second decimal compared to the sum of each acreage soil. This is due to a round error because we only show the acres of each soil with two decimal.



L-2300166

Holt County, Nebraska, 1040 AC +/-

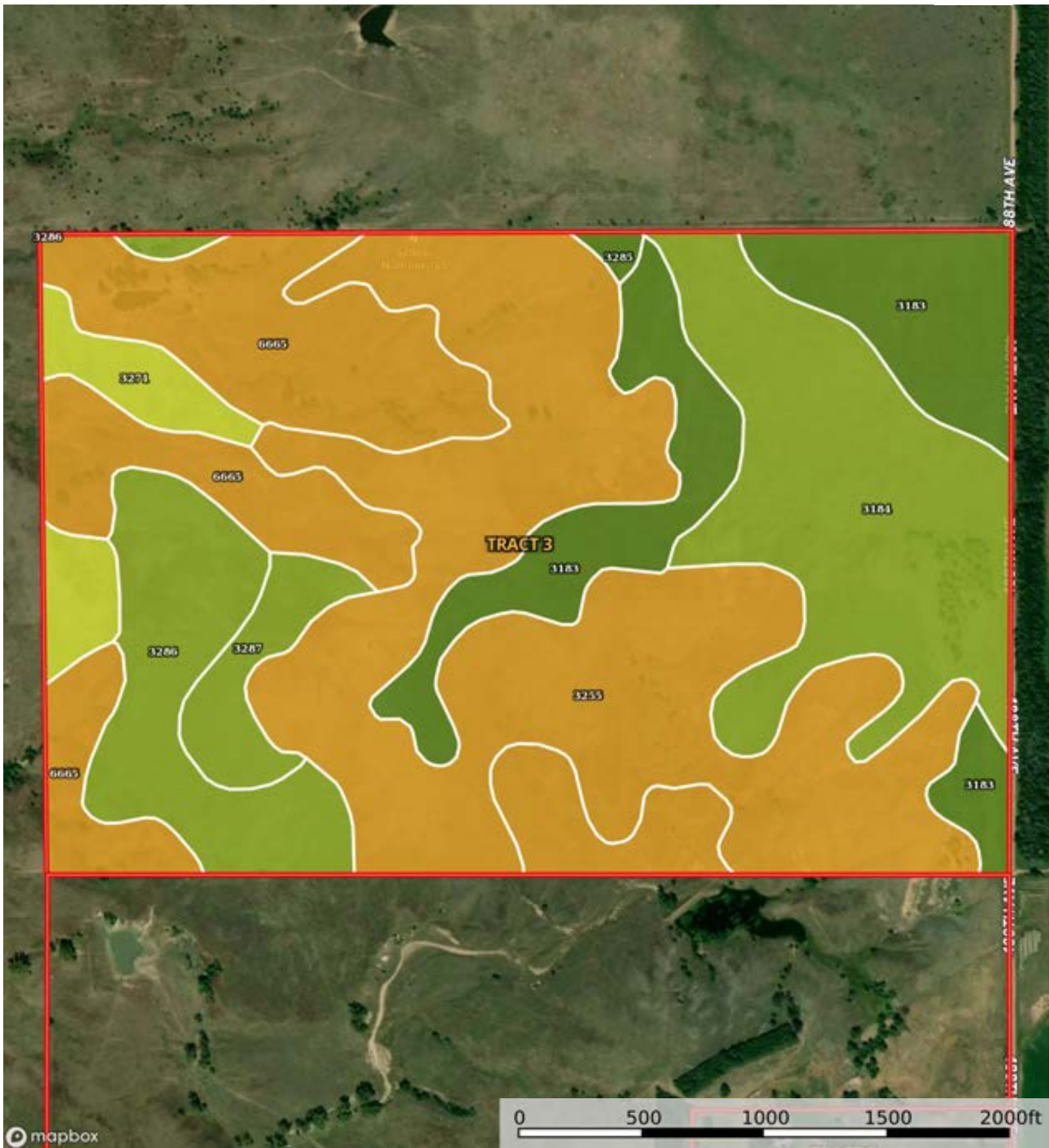


mapbox

Boundary

L-2300166

Holt County, Nebraska, 1040 AC +/-



Boundary

Boundary 239.18 ac

SOIL CODE	SOIL DESCRIPTION	ACRES	%	CPI	NCCPI	CAP
3255	Meadin sandy loam, 2 to 30 percent slopes	82.58	34.52	0	24	6s
6665	Brunswick-Pivot complex, 11 to 30 percent slopes	48.17	20.14	0	24	6e
3184	Jansen loam, 2 to 6 percent slopes	39.12	16.36	53	33	3e
3183	Jansen loam, 0 to 2 percent slopes	31.89	13.33	54	34	2s
3286	Paka loam, 2 to 6 percent slopes	21.14	8.84	0	54	3e
3271	O'Neill-Meadin fine sandy loams, 2 to 6 percent slopes	8.79	3.67	0	31	4e
3287	Paka loam, 6 to 11 percent slopes, eroded	6.71	2.81	0	48	3e
3285	Paka loam, 0 to 2 percent slopes	0.78	0.33	0	55	2c
TOTALS		239.18(*)	100%	15.87	30.49	4.54

(*) Total acres may differ in the second decimal compared to the sum of each acreage soil. This is due to a round error because we only show the acres of each soil with two decimal.



L-2300166

Holt County, Nebraska, 1040 AC +/-



Boundary



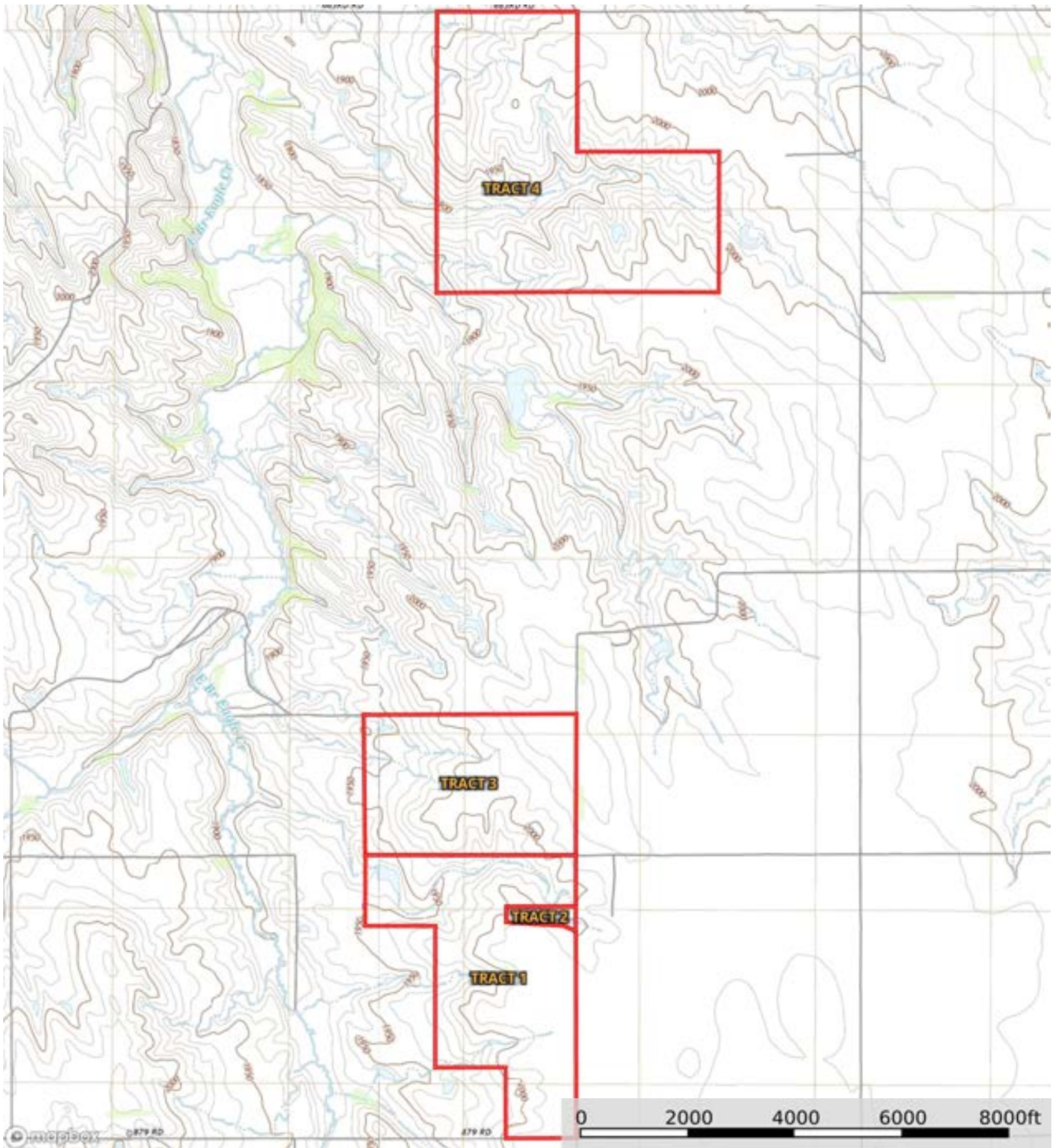
The information contained herein was obtained from sources deemed to be reliable. MapRight Services makes no warranties or guarantees as to the completeness or accuracy thereof.


|  Boundary 475.81 ac

SOIL CODE	SOIL DESCRIPTION	ACRES	%	CPI	NCCPI	CAP
3273	O'Neill-Meadin fine sandy loams, 6 to 11 percent slopes	124.1	26.08	0	30	6e
3270	O'Neill-Meadin fine sandy loams, 11 to 30 percent slopes	110.4 4	23.21	0	22	6e
6665	Brunswick-Pivot complex, 11 to 30 percent slopes	90.42	19.0	0	24	6e
3255	Meadin sandy loam, 2 to 30 percent slopes	36.66	7.7	0	24	6s
3184	Jansen loam, 2 to 6 percent slopes	36.04	7.57	53	33	3e
2346	Inavale sand, channeled, frequently flooded	32.77	6.89	0	17	6w
3193	Jansen-Meadin loams, 2 to 6 percent slopes	31.35	6.59	0	39	3e
3183	Jansen loam, 0 to 2 percent slopes	12.09	2.54	54	34	2s
2331	Inavale loamy fine sand, rarely flooded	1.94	0.41	0	25	4e
TOTALS		475.8 1(*)	100%	5.39	26.55	5.47

(*) Total acres may differ in the second decimal compared to the sum of each acreage soil. This is due to a round error because we only show the acres of each soil with two decimal.





 Boundary