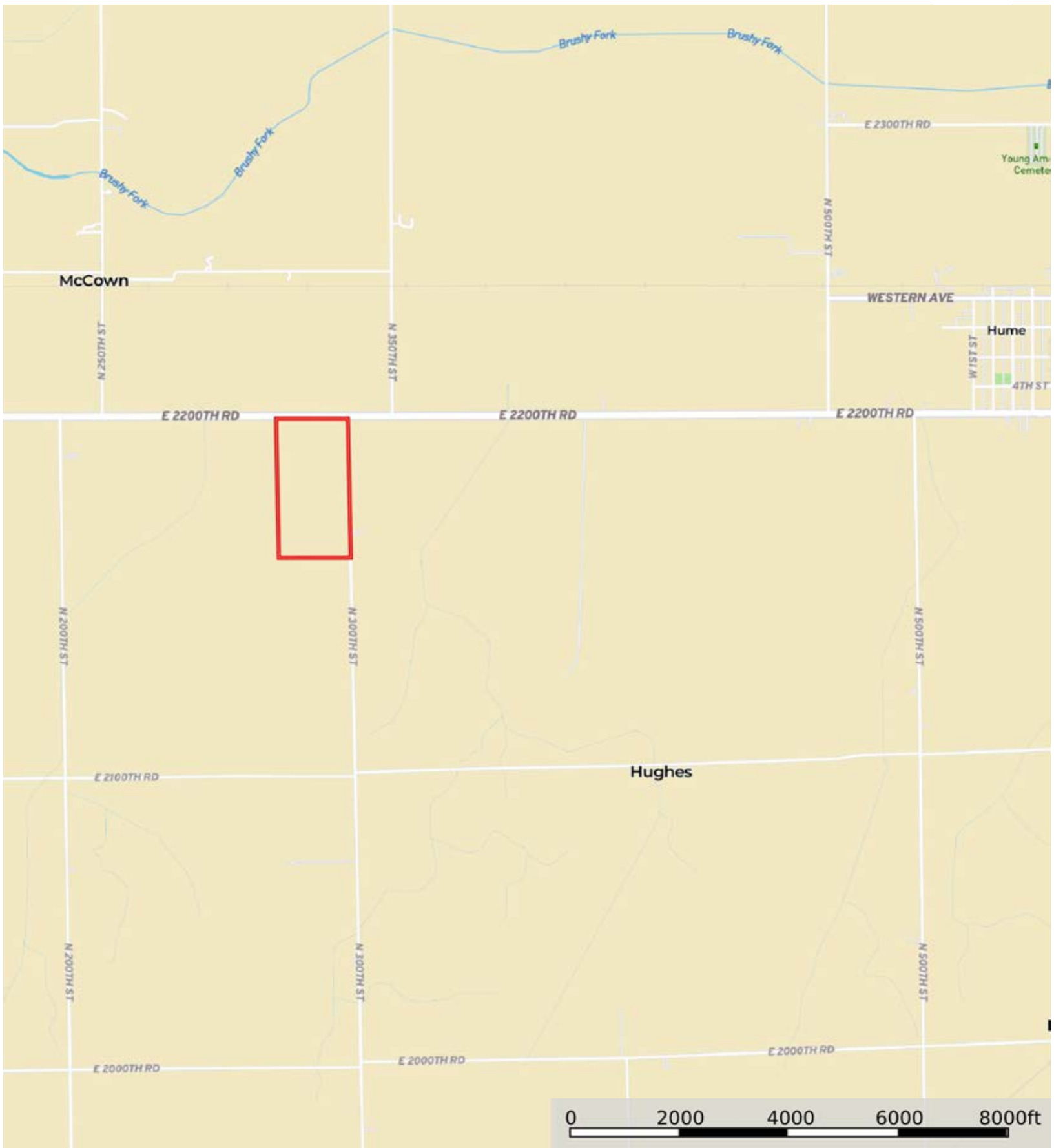



L-2300188

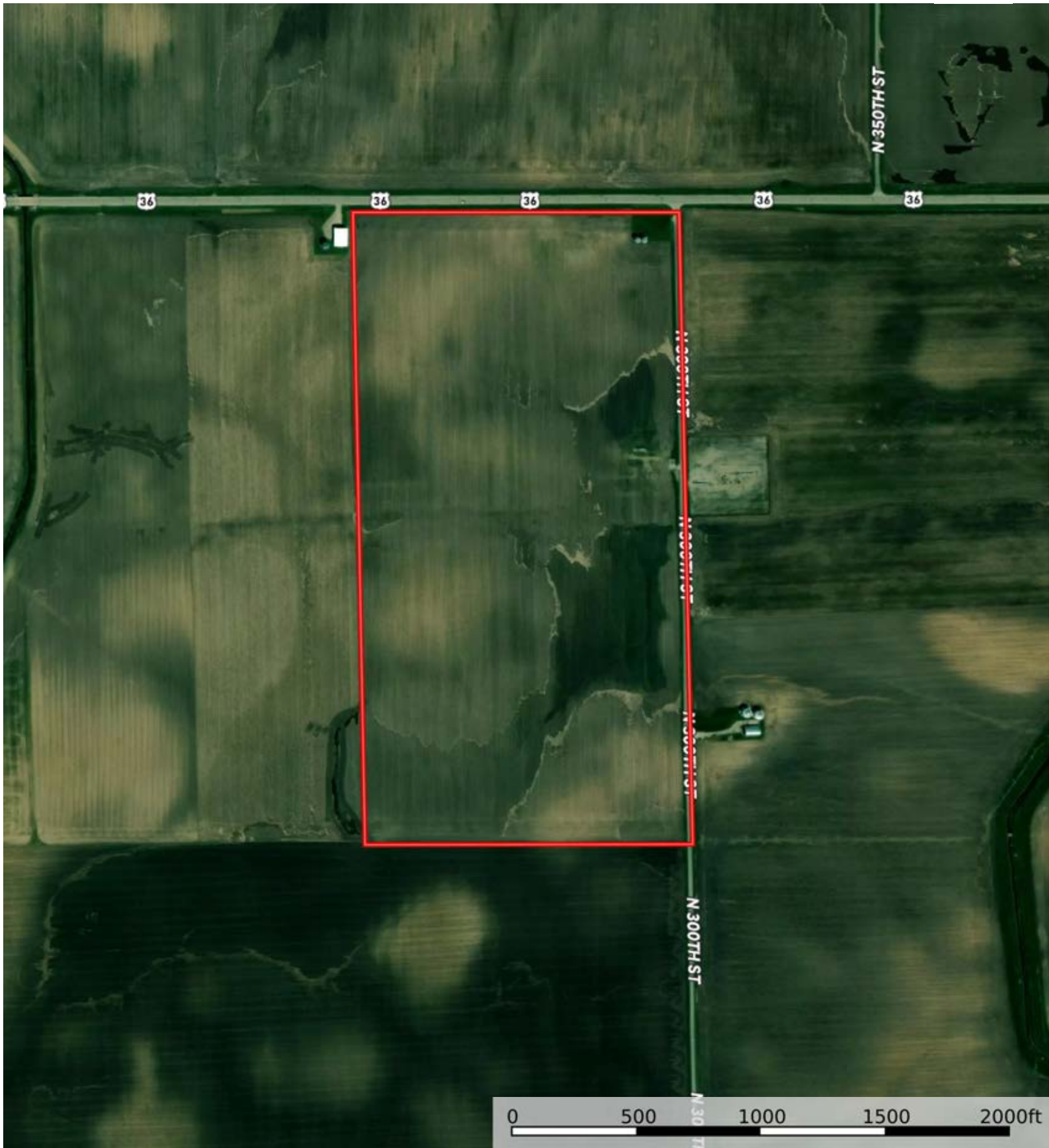
Edgar County, Illinois, 78.67 AC +/-




 Boundary



The information contained herein was obtained from sources deemed to be reliable. MapRight Services makes no warranties or guarantees as to the completeness or accuracy thereof.




 Boundary

L-2300188

Edgar County, Illinois, 78.67 AC +/-



 Boundary



The information contained herein was obtained from sources deemed to be reliable. MapRight Services makes no warranties or guarantees as to the completeness or accuracy thereof.

|  Boundary 76.99 ac

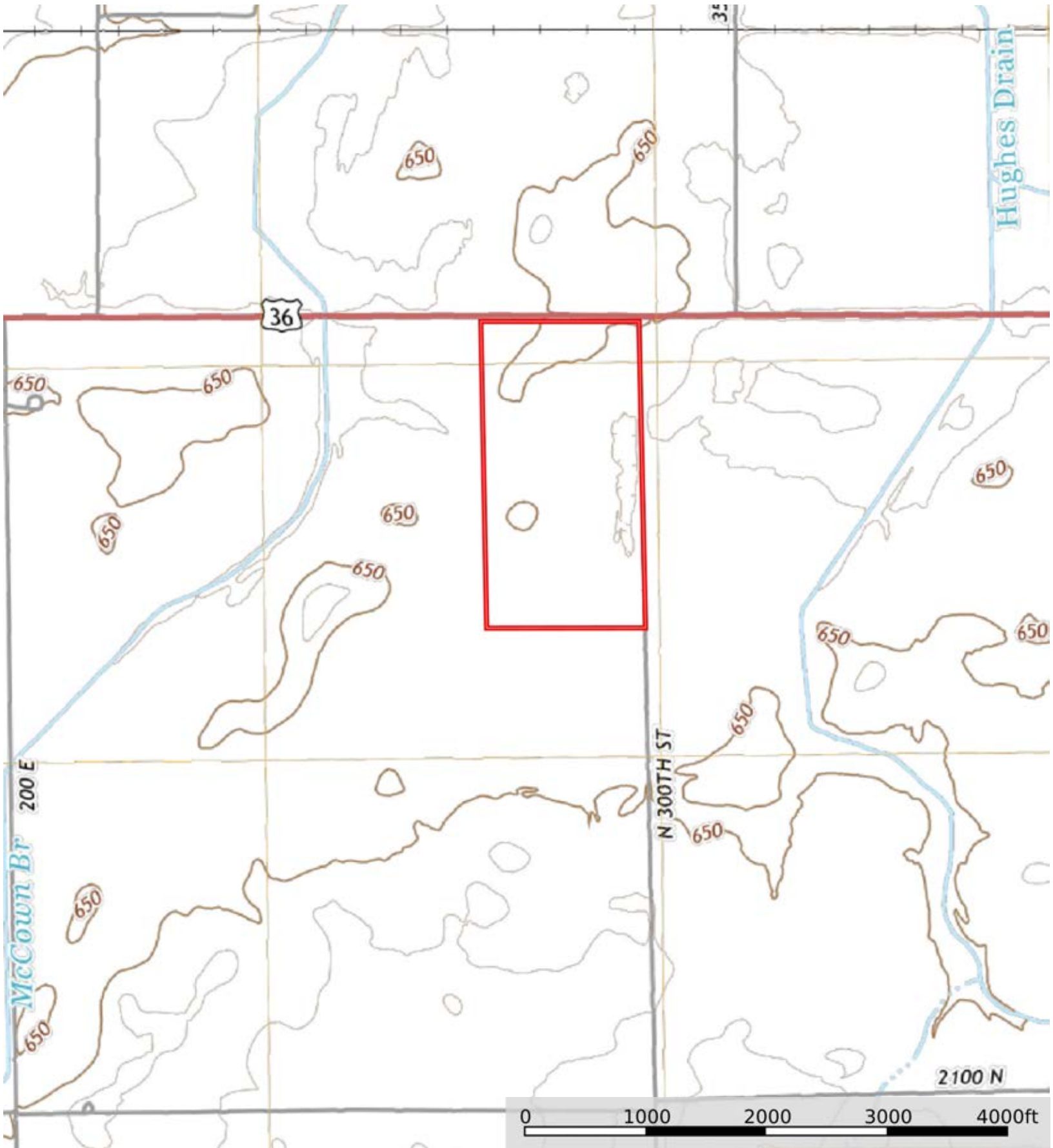
SOIL CODE	SOIL DESCRIPTION	ACRES	%	PI	NCCPI	CAP
152A	Drummer silty clay loam, 0 to 2 percent slopes	48.74	63.3	144	83	2w
154A	Flanagan silt loam, 0 to 2 percent slopes	15.47	20.09	144	91	1
56B	Dana silt loam, 2 to 5 percent slopes	7.89	10.25	130	90	2e
198A	Elburn silt loam, 0 to 2 percent slopes	4.43	5.75	143	91	1
153A	Pella silty clay loam, 0 to 2 percent slopes	0.46	0.6	136	80	2w
TOTALS		76.99(*)	100%	142.44	85.76	1.74

(*) Total acres may differ in the second decimal compared to the sum of each acreage soil. This is due to a round error because we only show the acres of each soil with two decimal.



L-2300188

Edgar County, Illinois, 78.67 AC +/-



 Boundary