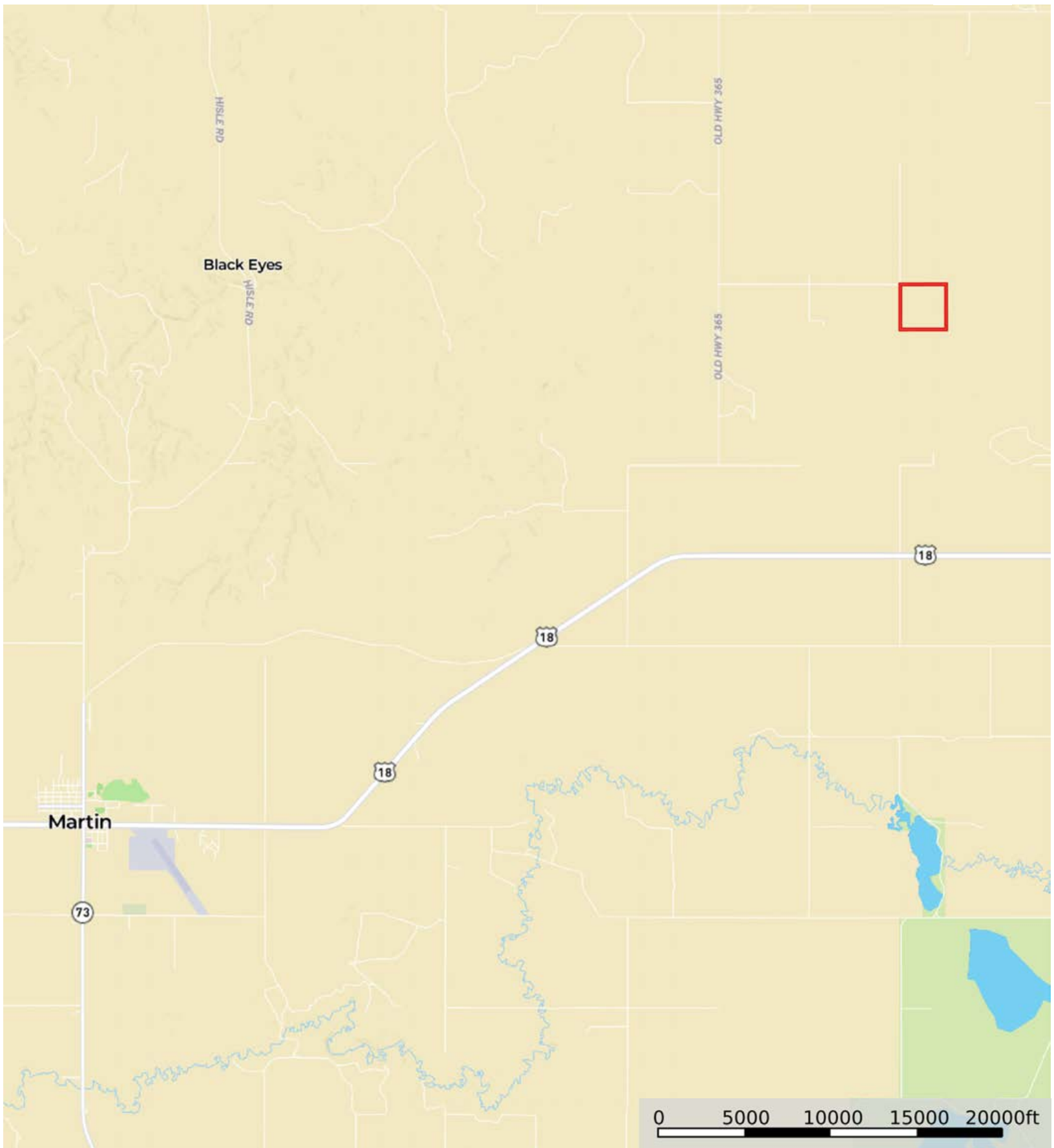



L-2300192

Bennett County, South Dakota, 159 AC +/-




 Boundary

L-2300192

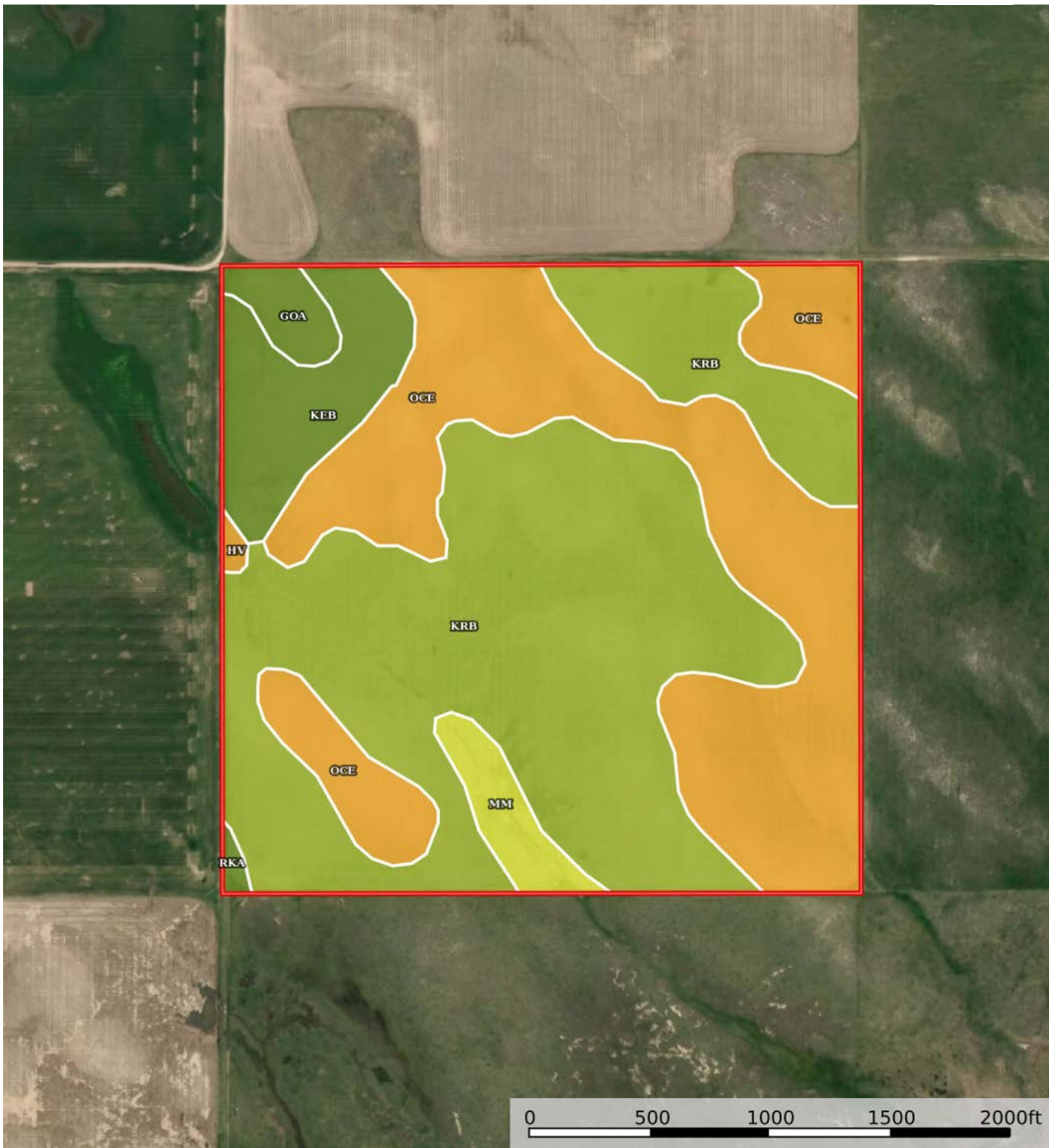
Bennett County, South Dakota, 159 AC +/-




 Boundary

L-2300192

Bennett County, South Dakota, 159 AC +/-



 Boundary

|  Boundary 160.16 ac

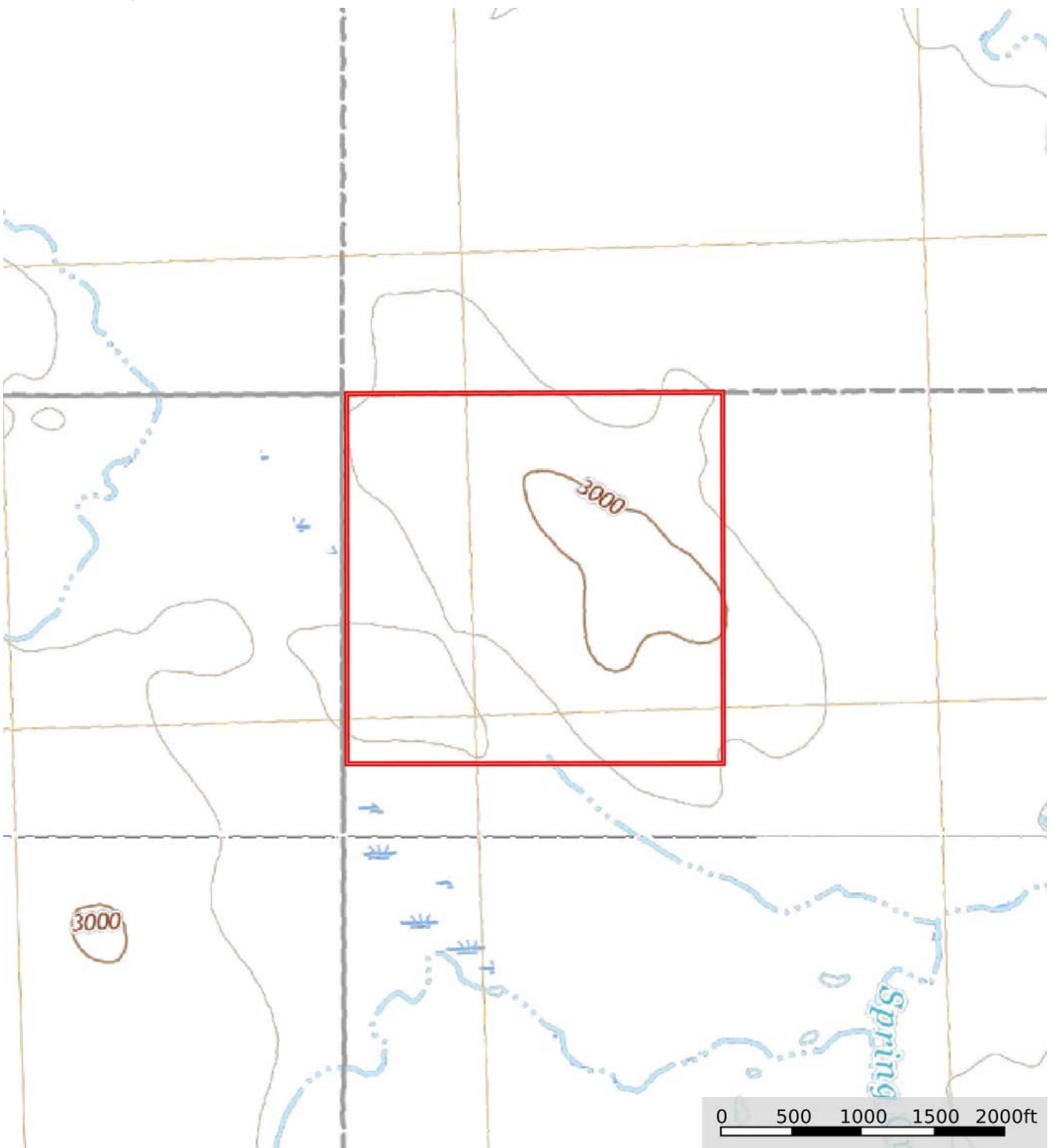
SOIL CODE	SOIL DESCRIPTION	ACRES	%	CPI	NCCPI	CAP
KrB	Keith-Rosebud silt loams, 2 to 6 percent slopes	82.99	51.81	82	47	3e
OcE	Oglala-Canyon loams, 9 to 25 percent slopes	56.88	35.51	39	28	6e
KeB	Keith silt loam, 3 to 6 percent slopes	11.97	7.47	86	57	2e
Mm	Mosher-Minatare complex, 0 to 6 percent slopes	4.36	2.72	27	20	4s
GoA	Mobridge silt loam, 0 to 3 percent slopes	2.95	1.84	92	57	2e
RkA	Richfield-Keith silt loams, 0 to 2 percent slopes	0.55	0.34	79	48	2c
Hv	Hoven silt loam, 0 to 1 percent slopes	0.46	0.29	14	8	6s
TOTALS		160.16(*)	100%	65.5	40.34	4.0

(\*) Total acres may differ in the second decimal compared to the sum of each acreage soil. This is due to a round error because we only show the acres of each soil with two decimal.



L-2300192

Bennett County, South Dakota, 159 AC +/-



 Boundary



The information contained herein was obtained from sources deemed to be reliable. MapRight Services makes no warranties or guarantees as to the completeness or accuracy thereof.